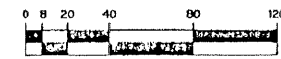
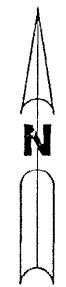


# ISLES AT PALM BEACH GARDENS

A PARCEL OF LAND SITUATE IN SECTION 36, TOWNSHIP 41 SOUTH, RANGE 42 EAST  
CITY OF PALM BEACH GARDENS, PALM BEACH COUNTY, FLORIDA.

SHEET 10 OF 18 AUGUST 2001

THIS INSTRUMENT PREPARED BY  
WILBUR DIVINE, P.S.M. 4190, STATE OF FLORIDA  
LAWSON, NOBLE AND WEBB, INC.  
ENGINEERS PLANNERS SURVEYORS  
WEST PALM BEACH, FLORIDA  
LB 6674

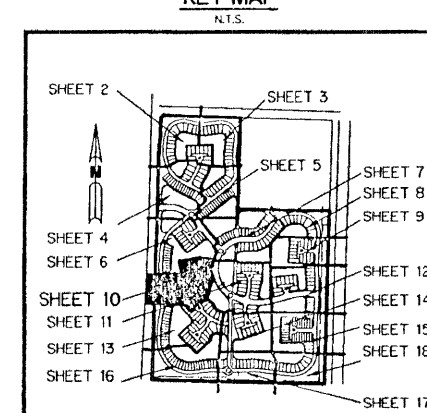


SCALE: 1" = 40'

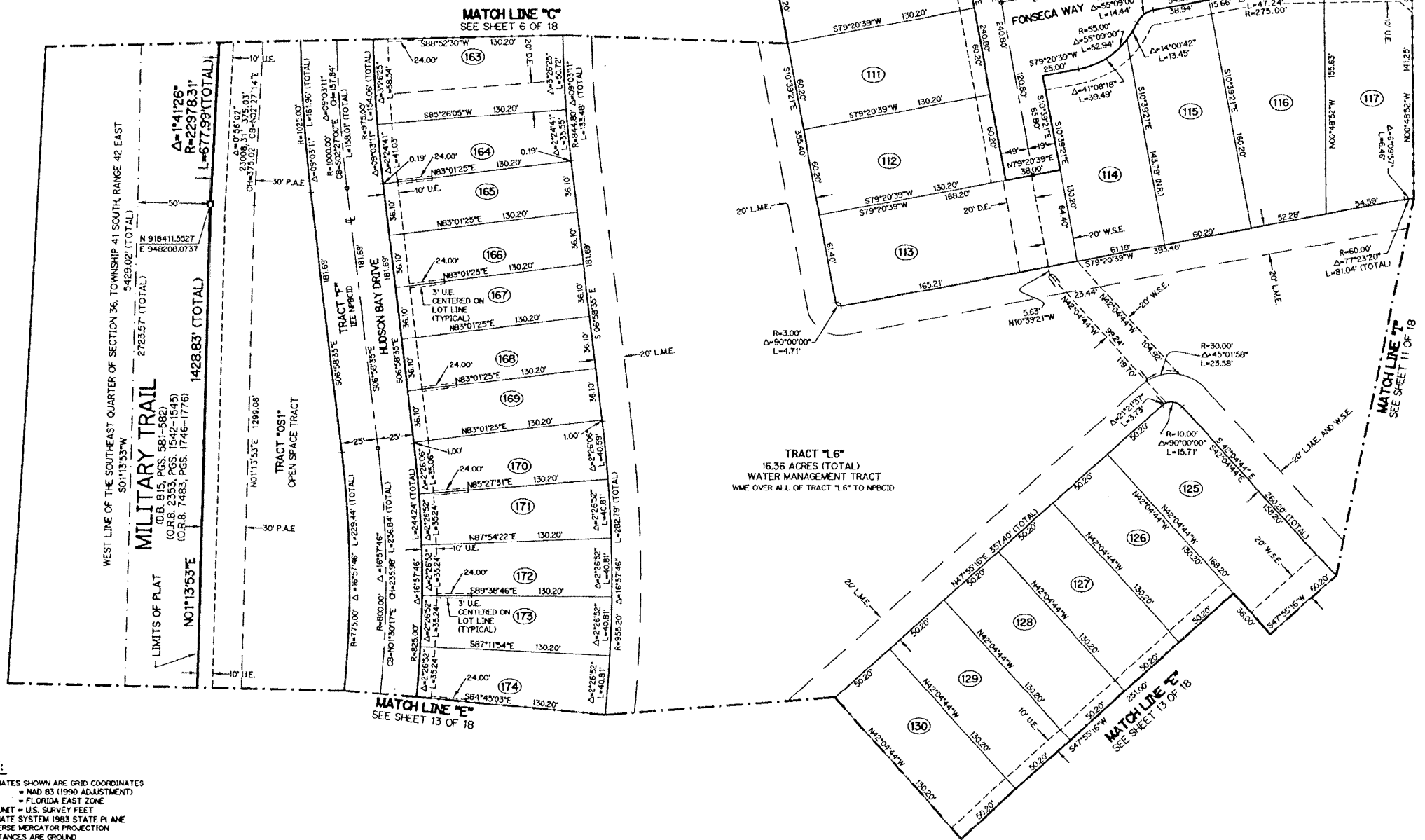
### LEGEND:

- - SET PERMANENT REFERENCE MONUMENT NO. L.B. 6674
- - SET PERMANENT CONTROL POINT NO. L.B. 6674
- - SET 3/8" IRON ROD WITH CAP NO. L.B. 6674
- - FOUND PERMANENT REFERENCE MONUMENT
- Δ - DELTA ANGLE
- BT - BUFFER TRACT
- CL - CENTERLINE
- CB - CHORD BEARING
- CH - CHORD
- D.B. - DEED BOOK
- D.E. - DRAINAGE EASEMENT
- L - ARC LENGTH
- L.A.E. - LIMITED ACCESS EASEMENT
- L.M.E. - LAKE MAINTENANCE EASEMENT
- N.M.E. - NON-RADIAL EASEMENT
- N.T.S. - NOT TO SCALE
- (P) - PLAT DIMENSION
- P.A.E. - PUBLIC ACCESS EASEMENT
- P.D.E. - PUBLIC DRAINAGE EASEMENT
- OS - OPEN SPACE TRACT
- O.R.B. - OFFICIAL RECORD BOOK
- P.B. - PLAT BOOK
- PGS. - PAGES
- R - RADIUS
- S.E. - SIDEWALK EASEMENT
- U.E. - UTILITY EASEMENT
- W.S.E. - WATER AND SEWER EASEMENT
- (R.F.) - RADIAL TO FRONT
- (R.R.) - RADIAL TO REAR
- N.P.B.C.D. - NORTHERN PALM BEACH COUNTY IMPROVEMENT DISTRICT
- W.M.E. - WATER MANAGEMENT EASEMENT
- W.M.A.E. - WATER MANAGEMENT ACCESS EASEMENT
- I.E.E. - INGRESS EGRESS EASEMENT
- L.M.A.E. - LAKE MAINTENANCE ACCESS EASEMENT
- P.I. - POINT OF INTERSECTION

### KEY MAP



A372 SHEET 10 OF 18



TRACT "L6"  
16.36 ACRES (TOTAL)  
WATER MANAGEMENT TRACT  
W.M.E. OVER ALL OF TRACT "L6" TO NPBCID

**NOTE:**  
 COORDINATES SHOWN ARE GRID COORDINATES  
 DATUM = NAD 83 (1990 ADJUSTMENT)  
 ZONE = FLORIDA EAST ZONE  
 LINEAR UNIT = U.S. SURVEY FEET  
 COORDINATE SYSTEM 1983 STATE PLANE  
 TRANSVERSE MERCATOR PROJECTION  
 ALL DISTANCES ARE GROUND  
 SCALE FACTOR = 1.0000397  
 S88°41'11" E (PLAT BEARING)  
 S88°41'11" E (GRID BEARING)  
 ZERO ROTATION, PLAT TO GRID

G:\DATA\300-399\A372\CAD\A372PL10.dwg 08/14/2001 02:47:17 PM EDT