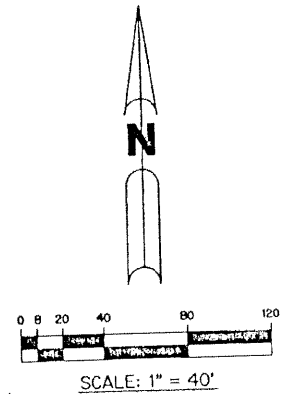


# ISLES AT PALM BEACH GARDENS

A PARCEL OF LAND SITUATE IN SECTION 36, TOWNSHIP 41 SOUTH, RANGE 42 EAST  
CITY OF PALM BEACH GARDENS, PALM BEACH COUNTY, FLORIDA.

SHEET 6 OF 18      AUGUST 2001



THIS INSTRUMENT PREPARED BY  
WILBUR DIXIE, P.S.M. 4190, STATE OF FLORIDA  
LAWSON, NOBLE AND WEBB, INC.  
ENGINEERS, PLANNERS, SURVEYORS  
WEST PALM BEACH, FLORIDA  
LB 6674

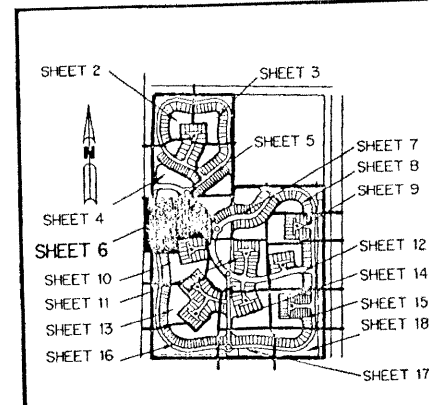
- LEGEND:**
- - SET PERMANENT REFERENCE MONUMENT NO. LB. 6674
  - - SET PERMANENT CONTROL POINT NO. LB. 6674
  - ⊙ - SET 5/8" IRON ROD WITH CAP NO. LB. 6674
  - ⊕ - FOUND PERMANENT REFERENCE MONUMENT
  - Δ - DELTA ANGLE
  - BT - BUFFER TRACT
  - E - CENTERLINE
  - CB - CHORD BEARING
  - CH - CHORD
  - DE - DEED BOOK
  - DE - DRAINAGE EASEMENT
  - L - ARC LENGTH
  - L.A.E. - LIMITED ACCESS EASEMENT
  - L.M.E. - LAKE MAINTENANCE EASEMENT
  - ORJ - NON-RADIAL
  - N.T.S. - NOT TO SCALE
  - PI - PLAT DIMENSION
  - P.A.E. - PUBLIC ACCESS EASEMENT
  - P.D.E. - PUBLIC DRAINAGE EASEMENT
  - OS - OPEN SPACE TRACT
  - OR.B. - OFFICIAL RECORD BOOK
  - P.B. - PLAT BOOK
  - P.G.S. - PAGES
  - R - RADIUS
  - S.E. - SIDEWALK EASEMENT
  - U.E. - UTILITY EASEMENT
  - W.S.E. - WATER AND SEWER EASEMENT
  - (R.F.) - RADIAL TO FRONT
  - (R.R.) - RADIAL TO REAR
  - N.P.B.C.D. - NORTHERN PALM BEACH COUNTY IMPROVEMENT DISTRICT
  - W.M.E. - WATER MANAGEMENT EASEMENT
  - W.M.M.E. - WATER MANAGEMENT MAINTENANCE EASEMENT
  - W.M.A.E. - WATER MANAGEMENT ACCESS EASEMENT
  - IEE - INGRESS EGRESS EASEMENT
  - L.M.A.E. - LAKE MAINTENANCE ACCESS EASEMENT
  - PI - POINT OF INTERSECTION

**NOTE:**

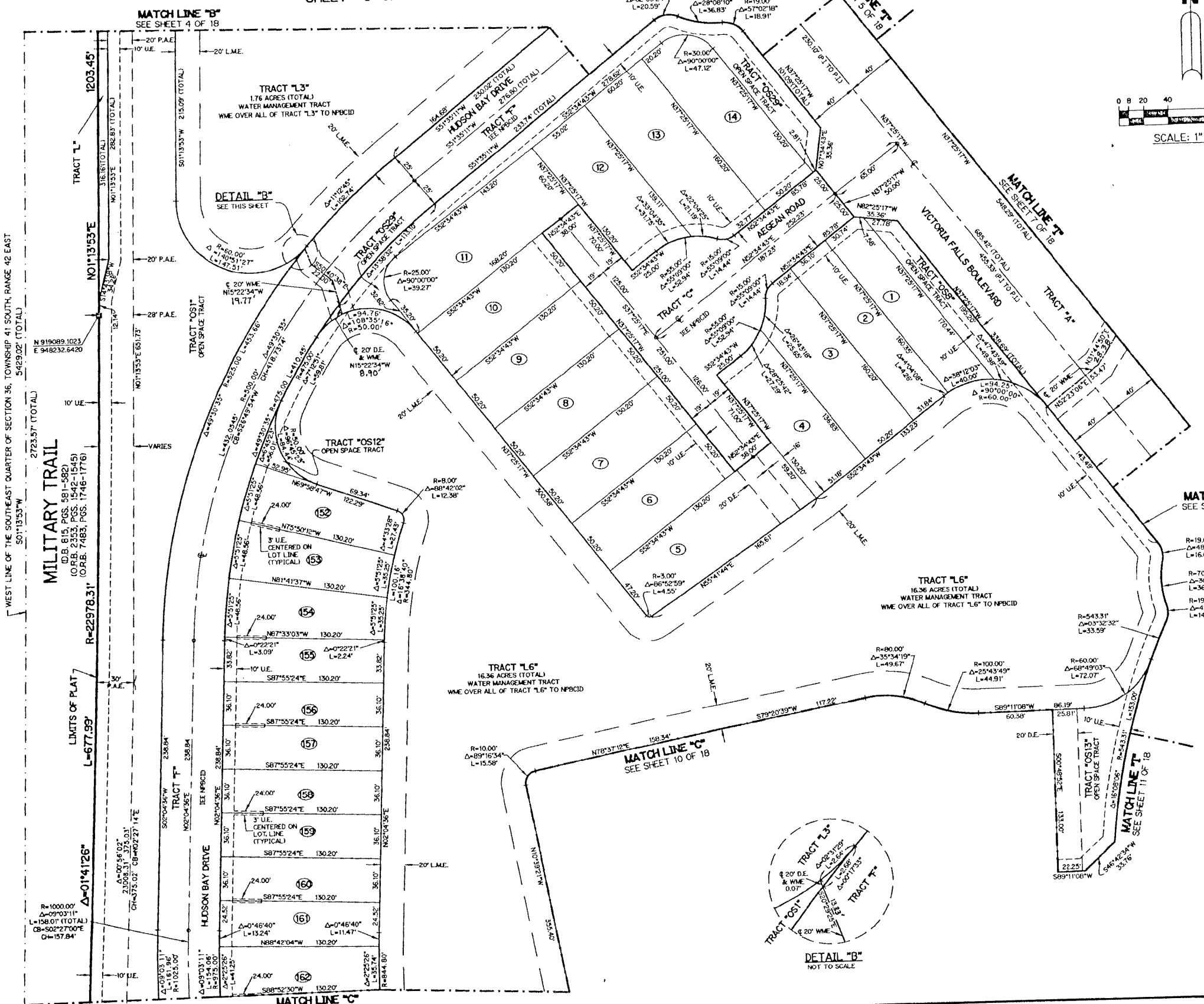
COORDINATES SHOWN ARE GRID COORDINATES  
DATUM = NAD 83 (1990 ADJUSTMENT)  
ZONE = FLORIDA EAST ZONE  
LINEAR UNIT = U.S. SURVEY FEET  
COORDINATE SYSTEM 1983 STATE PLANE  
TRANSVERSE MERCATOR PROJECTION  
ALL DISTANCES ARE GROUND  
SCALE FACTOR = 1.00000917  
SBP41111E (PLAT BEARING)  
SBP41111E (GRID BEARING)  
ZERO ROTATION, PLAT TO GRID

### KEY MAP

N.T.S.



A372 SHEET 6 OF 18



G:\DATA\300-399\A372\CAD\A372P16.dwg 08/14/2001 03:01:19 PM EDIT