

ISLES AT PALM BEACH GARDENS

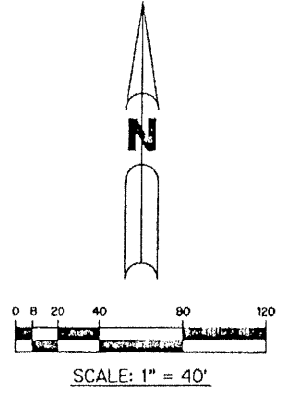
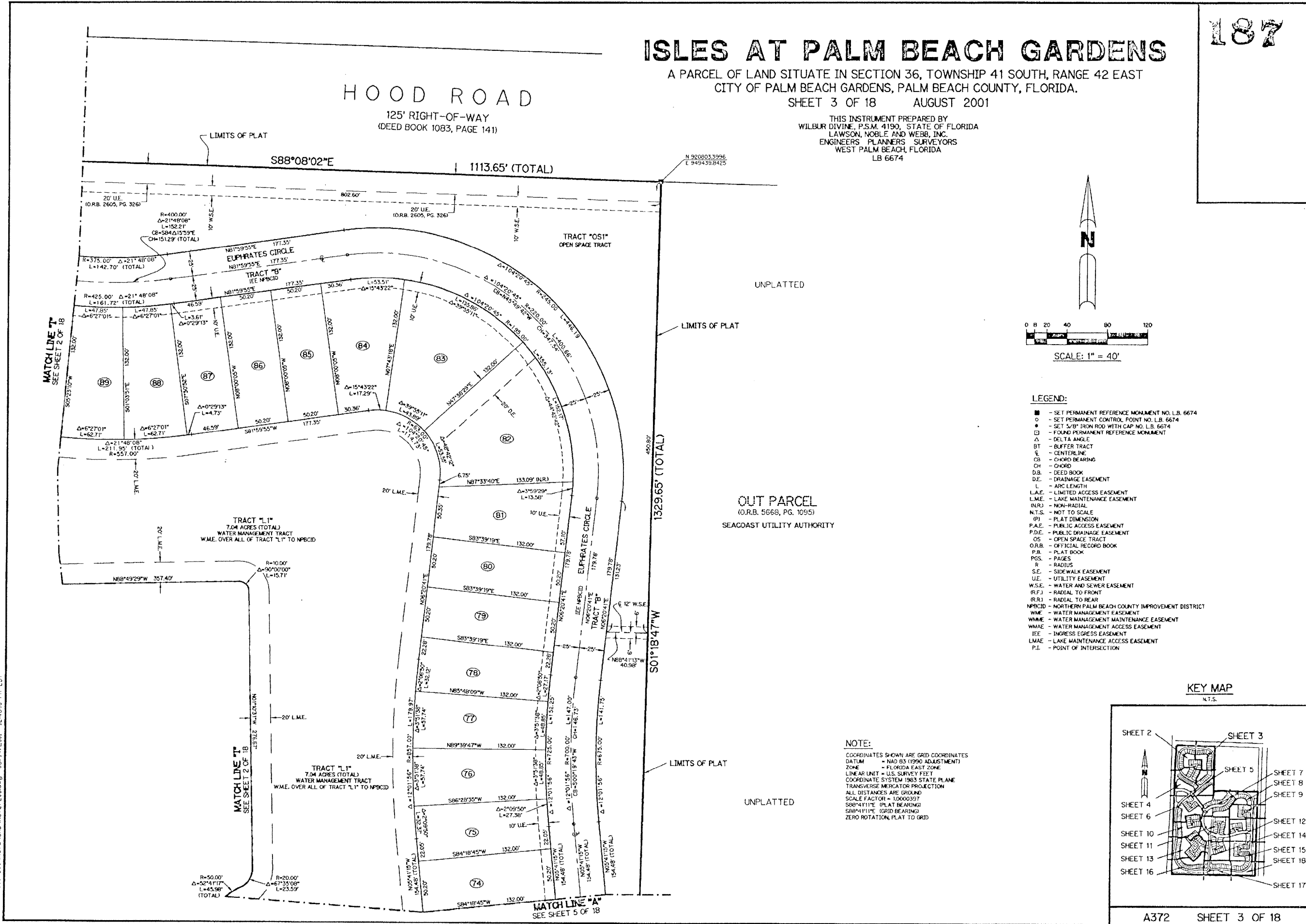
A PARCEL OF LAND SITUATE IN SECTION 36, TOWNSHIP 41 SOUTH, RANGE 42 EAST
CITY OF PALM BEACH GARDENS, PALM BEACH COUNTY, FLORIDA.

SHEET 3 OF 18 AUGUST 2001

THIS INSTRUMENT PREPARED BY
WILBUR DIVINE, P.S.M. 4190, STATE OF FLORIDA
LAWSON, NOBLE AND WEBB, INC.
ENGINEERS PLANNERS SURVEYORS
WEST PALM BEACH, FLORIDA
LB 6674

HOOD ROAD

125' RIGHT-OF-WAY
(DEED BOOK 1083, PAGE 141)

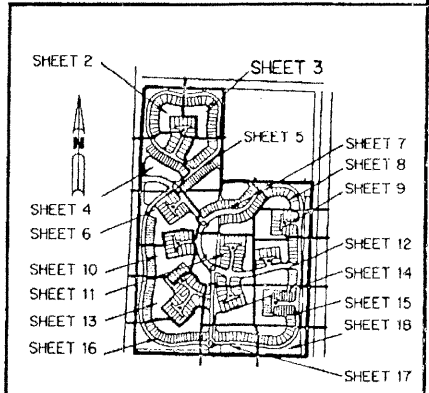


- LEGEND:**
- - SET PERMANENT REFERENCE MONUMENT NO. LB. 6674
 - - SET PERMANENT CONTROL POINT NO. LB. 6674
 - - SET 5/8" IRON ROD WITH CAP NO. LB. 6674
 - - FOUND PERMANENT REFERENCE MONUMENT
 - Δ - DELTA ANGLE
 - BT - BUFFER TRACT
 - CL - CENTERLINE
 - CB - CHORD BEARING
 - CH - CHORD
 - D.B. - DEED BOOK
 - D.E. - DRAINAGE EASEMENT
 - L - ARC LENGTH
 - L.A.E. - LIMITED ACCESS EASEMENT
 - L.M.E. - LAKE MAINTENANCE EASEMENT
 - (N.R.) - NON-RADIAL
 - N.T.S. - NOT TO SCALE
 - (PI) - PLAT DIMENSION
 - P.A.E. - PUBLIC ACCESS EASEMENT
 - P.D.E. - PUBLIC DRAINAGE EASEMENT
 - OS - OPEN SPACE TRACT
 - O.R.B. - OFFICIAL RECORD BOOK
 - P.B. - PLAT BOOK
 - PGS. - PAGES
 - R - RADIUS
 - S.E. - SIDEWALK EASEMENT
 - U.E. - UTILITY EASEMENT
 - W.S.E. - WATER AND SEWER EASEMENT
 - (R.F.) - RADIAL TO FRONT
 - (R.R.) - RADIAL TO REAR
 - NPBCID - NORTHERN PALM BEACH COUNTY IMPROVEMENT DISTRICT
 - WME - WATER MANAGEMENT EASEMENT
 - WMME - WATER MANAGEMENT MAINTENANCE EASEMENT
 - WMAE - WATER MANAGEMENT ACCESS EASEMENT
 - IEE - INGRESS EGRESS EASEMENT
 - LMAE - LAKE MAINTENANCE ACCESS EASEMENT
 - P.I. - POINT OF INTERSECTION

OUT PARCEL
(O.R.B. 5668, PG. 1095)
SEACOAST UTILITY AUTHORITY

NOTE:
COORDINATES SHOWN ARE GRID COORDINATES
DATUM = NAD 83 (1990 ADJUSTMENT)
ZONE = FLORIDA EAST ZONE
LINEAR UNIT = U.S. SURVEY FEET
COORDINATE SYSTEM 1983 STATE PLANE
TRANSVERSE MERCATOR PROJECTION
ALL DISTANCES ARE GROUND
SCALE FACTOR = 1.0000397
S88°41'11" (PLAT BEARING)
S88°41'11" (GRID BEARING)
ZERO ROTATION, PLAT TO GRID

KEY MAP
N.T.S.



G:\DATA\300-398\A372\CAD\A372PLOT03.dwg 08/14/2001 12:48:10 PM EDT