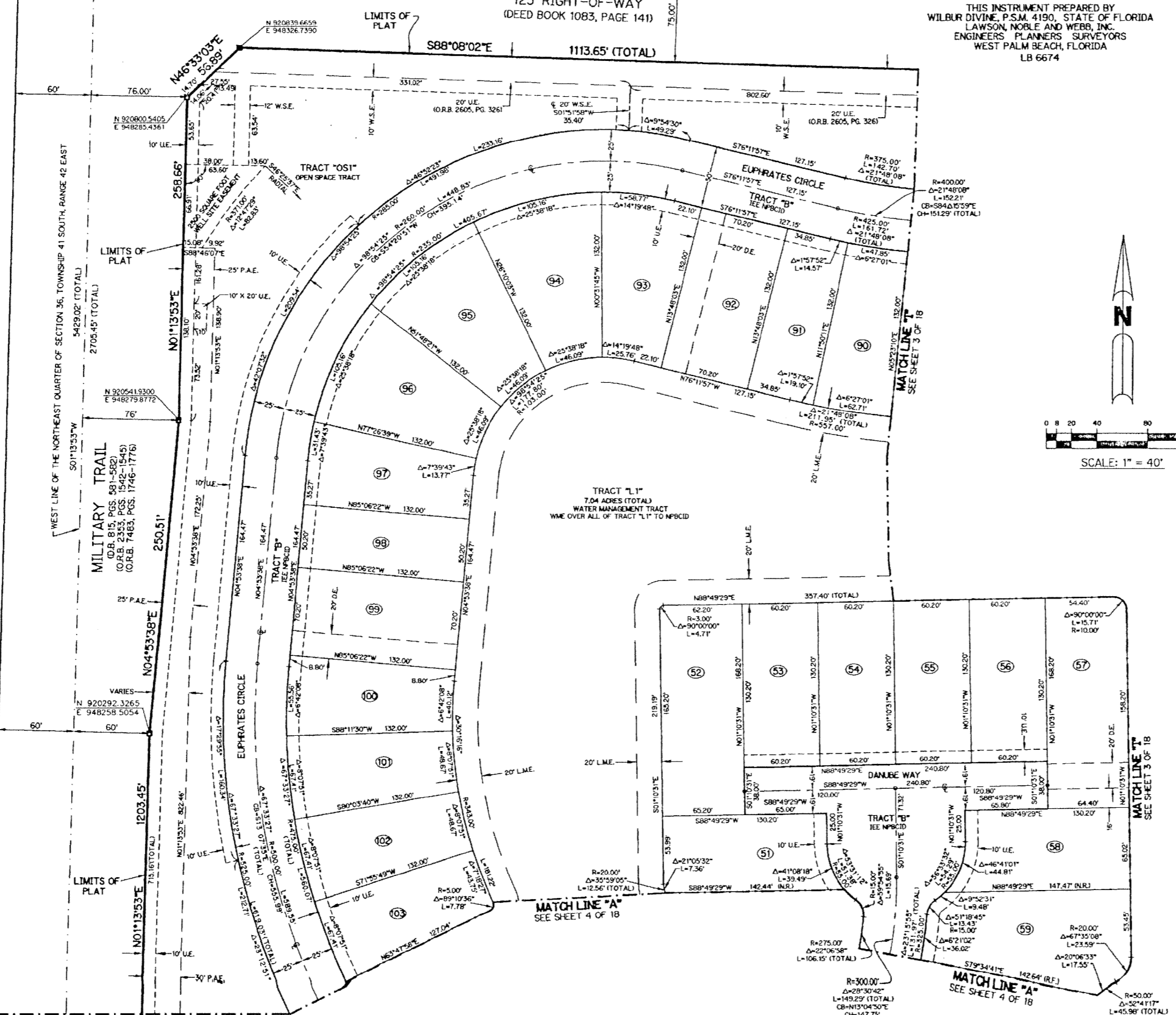


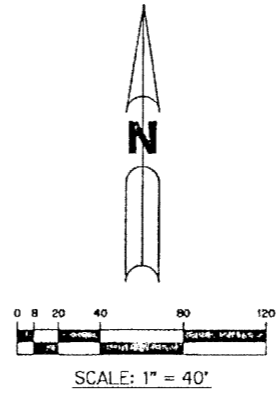
ISLES AT PALM BEACH GARDENS 186

A PARCEL OF LAND SITUATE IN SECTION 36, TOWNSHIP 41 SOUTH, RANGE 42 EAST
CITY OF PALM BEACH GARDENS, PALM BEACH COUNTY, FLORIDA.
SHEET 2 OF 18 AUGUST 2001

THIS INSTRUMENT PREPARED BY
WILBUR DIVINE, P.S.M. 4190, STATE OF FLORIDA
LAWSON, NOBLE AND WEBS, INC.
ENGINEERS, PLANNERS, SURVEYORS
WEST PALM BEACH, FLORIDA
LB 6674

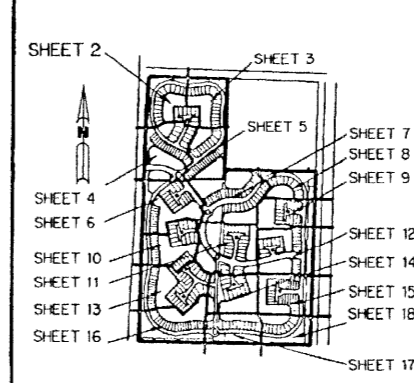


NOTE:
COORDINATES SHOWN ARE GRID COORDINATES
DATUM = NAD 83 (1990 ADJUSTMENT)
ZONE = FLORIDA EAST ZONE
LINEAR UNIT = U.S. SURVEY FEET
COORDINATE SYSTEM 1983 STATE PLANE
TRANSVERSE MERCATOR PROJECTION
ALL DISTANCES ARE GROUND
SCALE FACTOR = 1.0000337
SB8°41'11"E (PLAT BEARING)
SB8°41'11"E (GRID BEARING)
ZERO ROTATION PLAT TO GRID



- LEGEND:**
- - SET PERMANENT REFERENCE MONUMENT NO. LB. 6674
 - - SET PERMANENT CONTROL POINT NO. LB. 6674
 - - SET 5/8" IRON ROD WITH CAP NO. LB. 6674
 - - FOUND PERMANENT REFERENCE MONUMENT
 - Δ - DELTA ANGLE
 - BT - BUFFER TRACT
 - C - CENTERLINE
 - CB - CHORD BEARING
 - CH - CHORD
 - D.B. - DEED BOOK
 - D.E. - DRAINAGE EASEMENT
 - L - ARC LENGTH
 - L.A.E. - LIMITED ACCESS EASEMENT
 - L.M.E. - LAKE MAINTENANCE EASEMENT
 - (NRJ) - NON-RADIAL
 - N.T.S. - NOT TO SCALE
 - (P) - PLAT DIMENSION
 - P.A.E. - PUBLIC ACCESS EASEMENT
 - P.D.E. - PUBLIC DRAINAGE EASEMENT
 - OS - OPEN SPACE TRACT
 - OR.B. - OFFICIAL RECORD BOOK
 - P.B. - PLAT BOOK
 - PGS. - PAGES
 - R - RADIUS
 - S.E. - SIDEWALK EASEMENT
 - U.E. - UTILITY EASEMENT
 - W.S.E. - WATER AND SEWER EASEMENT
 - (RFJ) - RADIAL TO FRONT
 - (RH) - RADIAL TO REAR
 - NPBCD - NORTHERN PALM BEACH COUNTY IMPROVEMENT DISTRICT
 - W.M.E. - WATER MANAGEMENT EASEMENT
 - W.M.M.E. - WATER MANAGEMENT MAINTENANCE EASEMENT
 - W.M.A.E. - WATER MANAGEMENT ACCESS EASEMENT
 - I.E.E. - INGRESS EGRESS EASEMENT
 - LM.A.E. - LAKE MAINTENANCE ACCESS EASEMENT
 - P.I. - POINT OF INTERSECTION

KEY MAP
N.T.S.



A372 SHEET 2 OF 18

C:\DATA\1200-399A\372\CD\A372P2.Dwg 08/14/2001 08:39:38 AM EDT