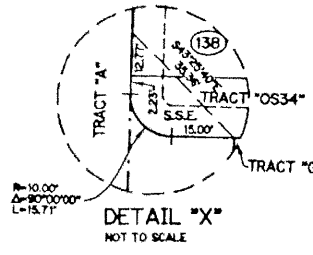
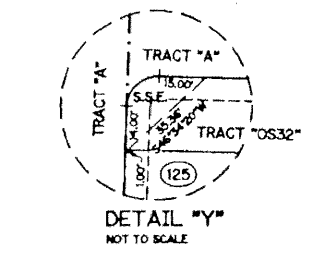
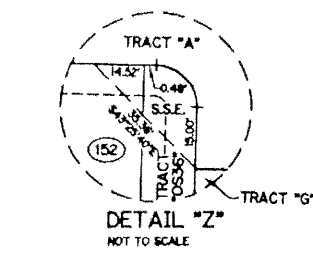
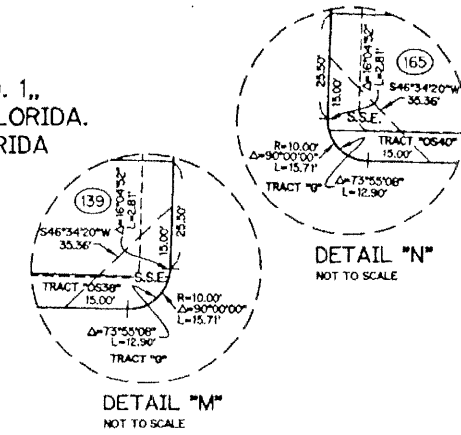
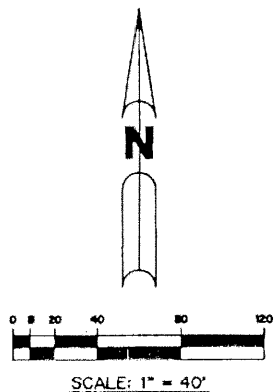


CAMBRIDGE AT ABACOA

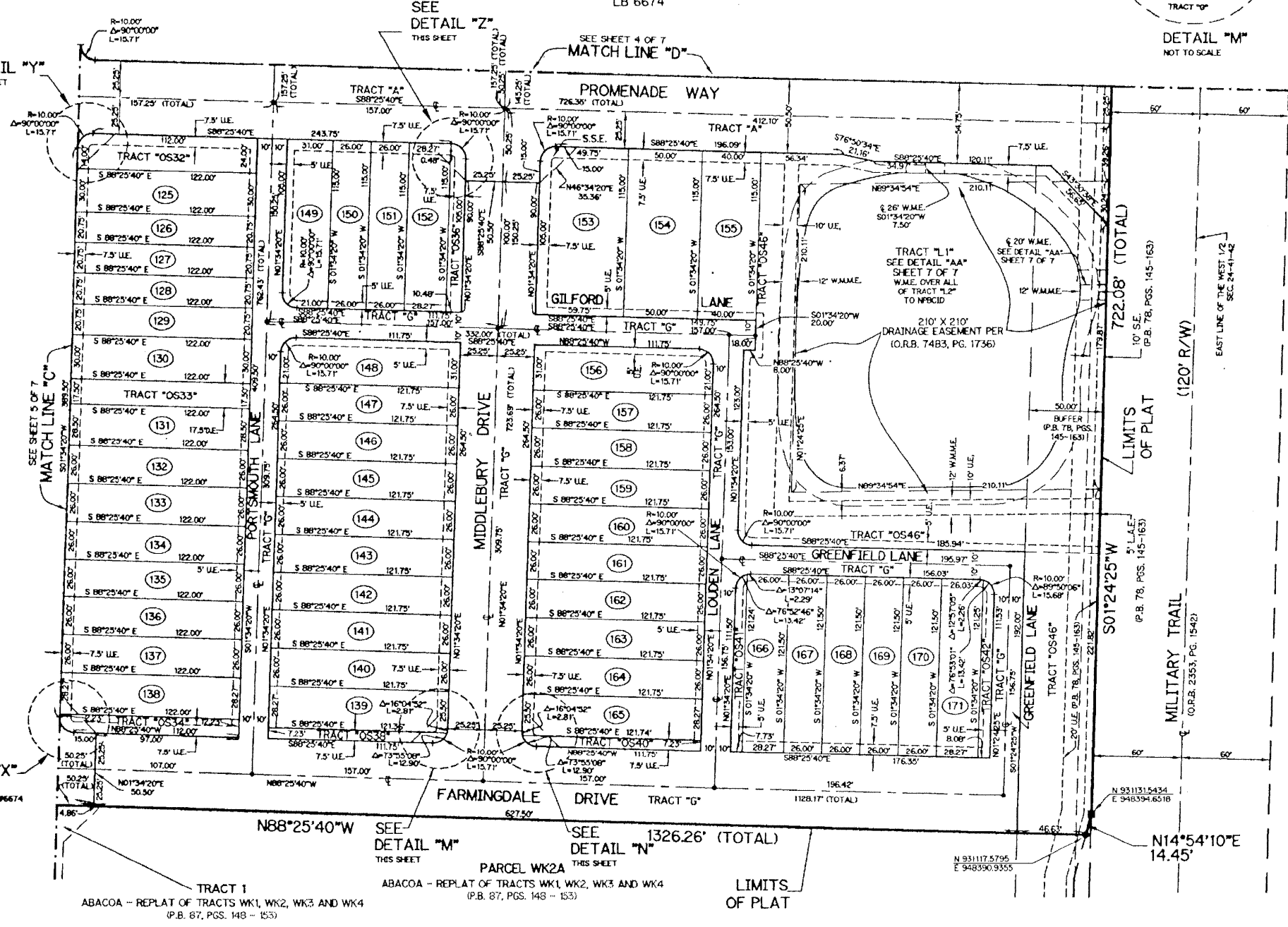
BEING A REPLAT OF ALL OF TRACTS R52, RN6B1 AND RN6B2 ACCORDING TO THE PLAT OF ABACOA PLAT NO. 1, AS RECORDED IN PLAT BOOK 78, PAGES 145 THROUGH 163 OF THE PUBLIC RECORDS OF PALM BEACH COUNTY, FLORIDA. LYING IN SECTION 24, TOWNSHIP 41 SOUTH, RANGE 42 EAST, TOWN OF JUPITER, PALM BEACH COUNTY, FLORIDA

SHEET 6 OF 7 JUNE, 2001

THIS INSTRUMENT PREPARED BY
WILBUR F. DIVINE, P.S.M. 4190, STATE OF FLORIDA
LAWSON, NOBLE AND WEBB, INC.
ENGINEERS PLANNERS SURVEYORS
420 COLUMBIA DRIVE, SUITE 110
WEST PALM BEACH, FLORIDA 33409
LB 6674



- LEGEND:**
- - SET PERMANENT REFERENCE MONUMENT, PSM #6674
 - - SET PERMANENT CONTROL POINT, PSM #6674
 - Δ - DELTA ANGLE
 - BT - BUFFER TRACT
 - CL - CENTERLINE
 - D.B. - DEED BOOK
 - D.E. - DRAINAGE EASEMENT
 - A.L. - ARC LENGTH
 - L.A.E. - LIMITED ACCESS EASEMENT
 - NRU - NON-RADIAL
 - N.T.S. - NOT TO SCALE
 - OS - OPEN SPACE TRACT
 - O.R.B. - OFFICIAL RECORD BOOK
 - P.B. - PLAT BOOK
 - P.G. - PAGES
 - R - RADIAL
 - S.E. - SIDEWALK EASEMENT
 - U.E. - UTILITY EASEMENT
 - N 931379.1119 E 785294.7754 - DENOTES STATE PLANE COORDINATES
 - NRPCD - NORTHERN PALM BEACH COUNTY IMPROVEMENT DISTRICT
 - RD - RADIAL
 - CB - CHORD BEARING
 - CH - CHORD DISTANCE
 - S.S.E. - SAFE SPURT EASEMENT
 - O.S. - OFFSET
 - W.M.M.E. - WATER MANAGEMENT MAINTENANCE EASEMENT
 - W.M.A.E. - WATER MANAGEMENT ACCESS EASEMENT
 - W.M.E. - WATER MANAGEMENT EASEMENT



NOTE:
 COORDINATES SHOWN ARE GRID COORDINATES
 DATUM = NAD 83 (1980 ADJUSTMENT)
 ZONE = FLORIDA EAST ZONE
 LINEAR UNIT = U.S. SURVEY FEET
 COORDINATE SYSTEM 1983 STATE PLANE
 TRANSVERSE MERCATOR PROJECTION
 ALL DISTANCES ARE GROUND
 SCALE FACTOR = 1.000077
 N 00°35'39" W PLAT BEARING
 N 00°35'41" W (GRID BEARING)
 00°00'00" = COUNTERCLOCKWISE BEARING ROTATION, PLAT TO GRID

