

# TUSCANY - PARCEL "E"

A PLANNED UNIT DEVELOPMENT BEING A PART OF CIBA GEIGY PUD

ABERDEEN-PLAT 26 REPLAT  
PB 82, PG 94

BEING A REPLAT OF TRACT "V", ABERDEEN-PLAT NO. 24, AS RECORDED IN PLAT BOOK 77, PAGES 174 THROUGH 180, INCLUSIVE, ALSO A PORTION OF PLAT NO. 1, LE CHALET (P.U.D.), AS RECORDED IN PLAT BOOK 31, PAGES 166 THROUGH 167, INCLUSIVE, AND TRACT "L-1", LOTS 96 THROUGH 98, INCLUSIVE, TUSCANY - PARCEL "D", AS RECORDED IN PLAT BOOK 84, PAGES 167 THROUGH 170, INCLUSIVE, ALL OF THE PUBLIC RECORDS OF PALM BEACH COUNTY, FLORIDA. LYING IN SECTIONS 15 AND 16, TOWNSHIP 45 SOUTH, RANGE 42 EAST, PALM BEACH COUNTY, FLORIDA.

ABERDEEN-PLAT 26 REPLAT  
PB 82, PG 94

MAY, 2001 SHEET 4 OF 5

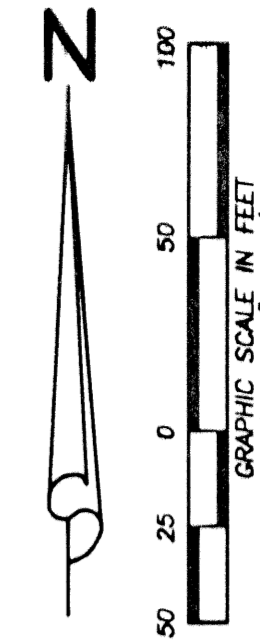
# 142

STATE OF FLORIDA  
COUNTY OF PALM BEACH

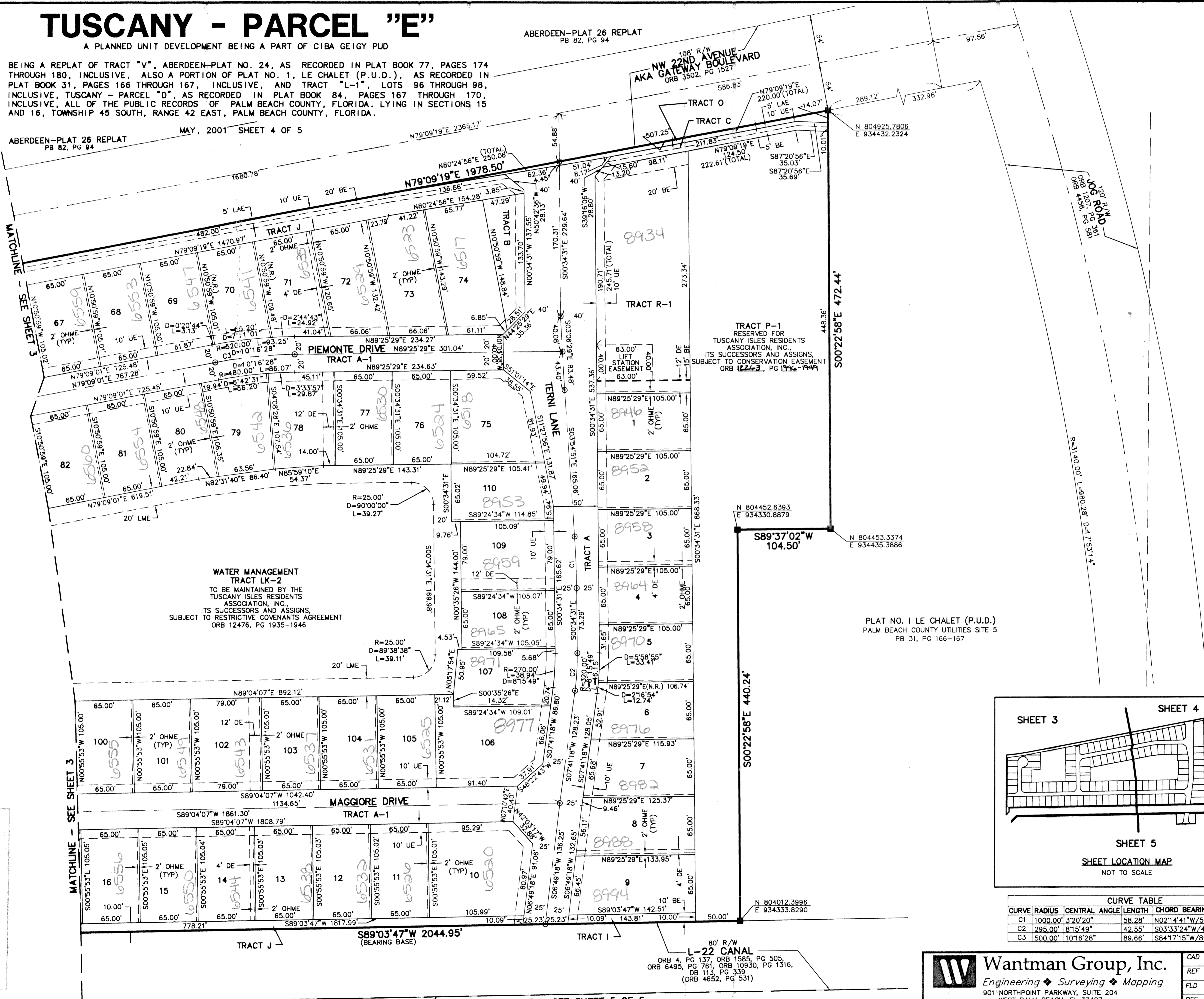
THIS PLAT WAS FILED FOR  
RECORD \_\_\_\_\_ DAY OF \_\_\_\_\_  
AD, 2001 AND DULY RECORDED  
IN PLAT BOOK \_\_\_\_\_ ON PAGES  
\_\_\_\_\_ AND \_\_\_\_\_

DOROTHY H. WILKEN, CLERK  
BY: \_\_\_\_\_, D.C.

CIRCUIT COURT SEAL



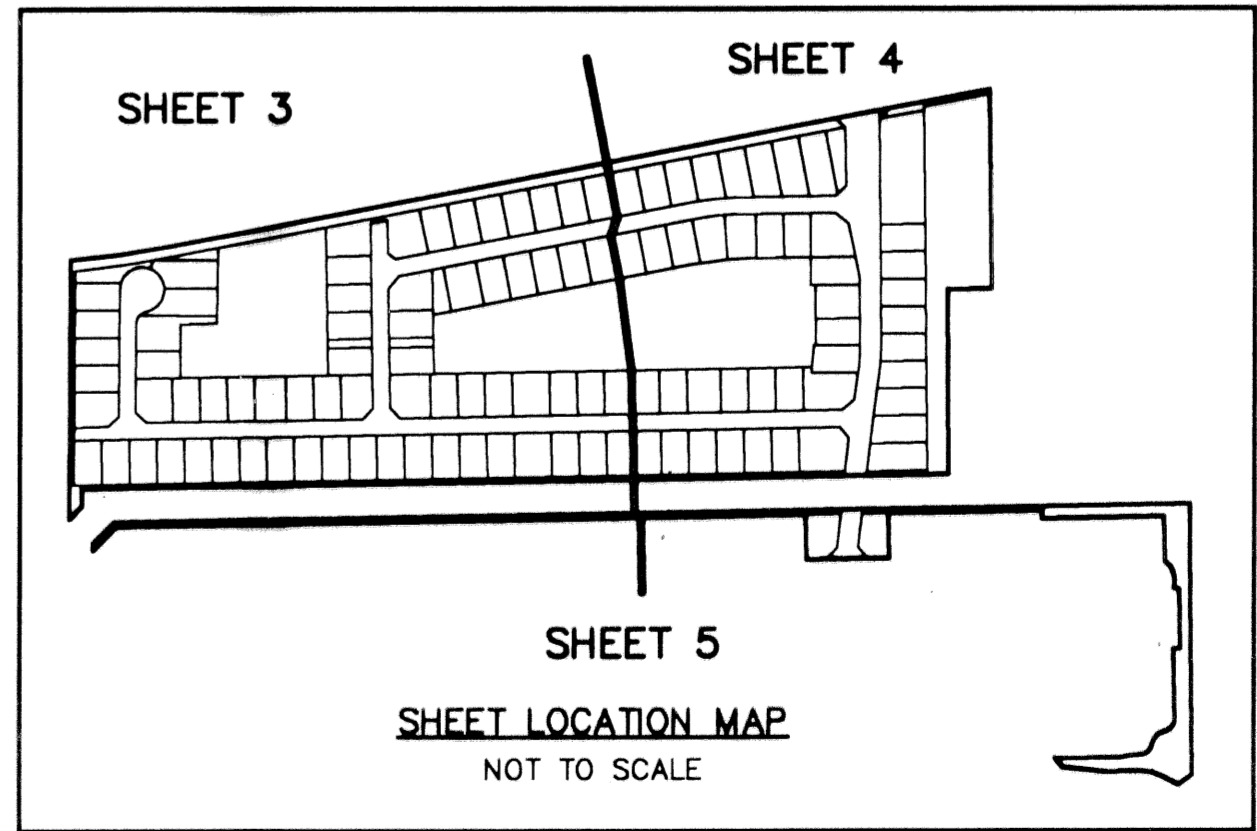
MATCHLINE - SEE SHEET 3



- LEGEND:**
- AKA = ALSO KNOWN AS
  - C/L = CENTERLINE
  - BE = BUFFER EASEMENT
  - DB = DEED BOOK
  - D = DELTA (CENTRAL) ANGLE
  - DE = DRAINAGE EASEMENT
  - FND = FOUND
  - L = ARC LENGTH
  - LAE = LIMITED ACCESS EASEMENT
  - LMAE = LAKE MAINTENANCE ACCESS EASEMENT
  - LME = LAKE MAINTENANCE EASEMENT
  - NO. = NUMBER
  - OHME = OVERHANG MAINTENANCE EASEMENT
  - ORB = OFFICIAL RECORD BOOK
  - PB = PLAT BOOK
  - PG(S) = PAGE(S)
  - POB = POINT OF BEGINNING
  - PUD = PLANNED UNIT OF DEVELOPMENT
  - R = RADIUS
  - R/W = RIGHT-OF-WAY
  - (TYP) = TYPICAL
  - UE = UTILITY EASEMENT
  - = SET 4"x4" CONCRETE MONUMENT
  - = "LB#7055" UNLESS OTHERWISE NOTED
  - ⊙ = SET PERMANENT CONTROL POINT "LB#7055"

TARTAN LAKES PLAT NO. 3  
PB 51, PG 170-174

PLAT NO. 1 LE CHALET (P.U.D.)  
PALM BEACH COUNTY UTILITIES SITE 5  
PB 31, PG 166-167



CURVE TABLE			
CURVE	RADIUS	CENTRAL ANGLE	CHORD BEARING/DISTANCE
C1	1000.00'	3°20'20"	N02°14'41"W/58.27'
C2	295.00'	8°15'49"	S03°33'24"W/42.51'
C3	500.00'	10°16'28"	S84°17'15"W/89.54'

**Wantman Group, Inc.**  
Engineering ♦ Surveying ♦ Mapping  
901 NORTHPOINT PARKWAY, SUITE 204  
WEST PALM BEACH, FL 33407  
(561) 887-2220 phone (561) 687-1110 fax  
CERT No. 6091 - LB No. 7055

CAD	K:\LEVITT\TUSCANY\DWG\TUSCRP02		
REF	K:\LEVITT\TUSCANY\DWG\TUSCMG01		
FLD	RP/AB	FB. 000 PG. 00	JOB 00-036A
OFF	AJP		DATE 12/05/00
CKD	RBP	SHEET 4 OF 5	DWG 00-020