

CITRUS ISLE, A P.U.D.

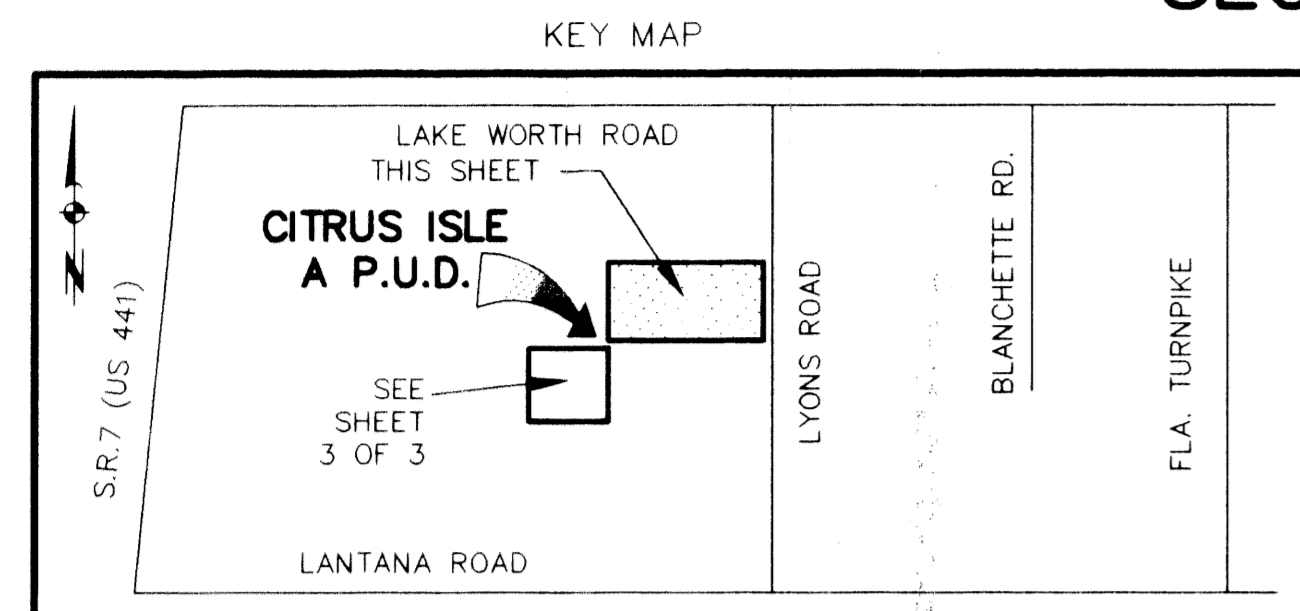
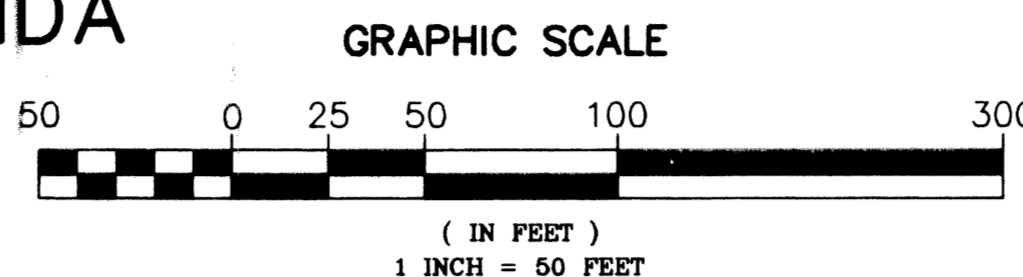
A REPLAT OF A PORTION OF TRACTS 27, 28, AND 31, BLOCK 27
 PALM BEACH FARMS COMPANY PLAT NO. 3 (P.B.2,PGS.45-54,PBCR)
 SECTION 30, TOWNSHIP 44 SOUTH, RANGE 42 EAST
 PALM BEACH COUNTY, FLORIDA

TABULATION
(CENTERLINE CURVES)

CURVE #	BEARING	DISTANCE
C-1	S29°24'57"W	171.91'
C-2	S09°46'10"W	59.41'
C-3	S39°11'17"W	117.67'
C-4	S80°14'13"E	56.05'
C-5	N78°42'16"E	93.76'
C-6	N75°00'25"W	181.09'
C-7	N75°00'50"W	142.35'
C-8	S44°59'30"W	159.79'
C-9	S27°46'22"W	116.61'
C-10	S44°15'26"W	56.88'

COUNTY OF PALM BEACH
 STATE OF FLORIDA
 THIS PLAT WAS FILED FOR
 RECORD AT 2:31
 THIS 14 DAY OF August
 2000, AND DULY RECORDED
 IN PLAT BOOK 91
 PAGES 136 THROUGH 138
 DOROTHY H. WILKIN
 CLERK OF CIRCUIT COURT

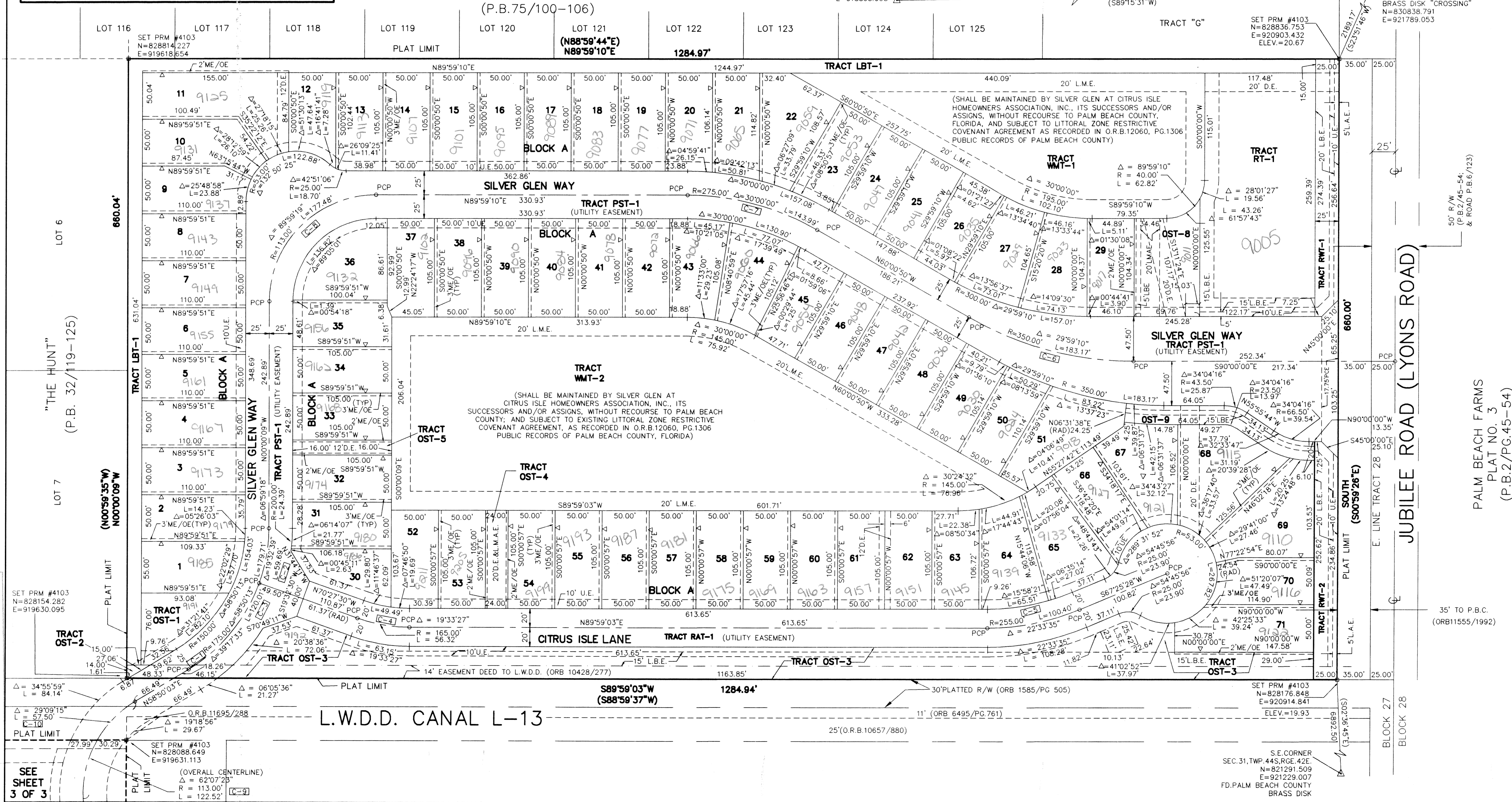
PREPARED BY
KATHLEEN L. HALL LAND SURVEYING, INC.
 1101 HOLLAND DRIVE, SUITE 32
 BOCA RATON, FLORIDA 33487
 TEL (561) 443-0426
 APRIL, 2000



REGENCY LAKE ESTATES
 (P.B.75/100-106)

FD.PALM BEACH COUNTY
 BRASS DISK "HUNTING"
 N=830800.969
 E=918865.968

FD.PALM BEACH COUNTY
 BRASS DISK "CROSSING"
 N=830838.791
 E=921789.053



SET PRM #4103
 N=828154.282
 E=919630.095

SET PRM #4103
 N=828176.848
 E=920914.841
 ELEV.=19.93

SEE SHEET 3 OF 3
 (OVERALL CENTERLINE)
 Δ = 62°07'25"
 R = 113.00'
 L = 122.52'

PALM BEACH FARMS
 PLAT NO. 3
 (P.B.2/PG.45-54)

CITRUS ISLE
 PLAT 137
 FLOOR PLAN
 ZONING PUD
 ZONING 48
 ZIP CODE 33467
 738
 F.C.D. NAME