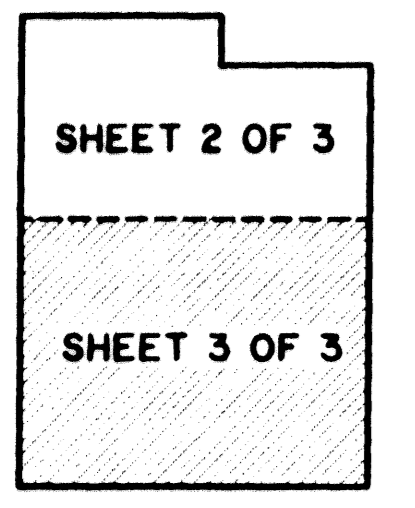


WALGREENS - DISTRIBUTION CENTER

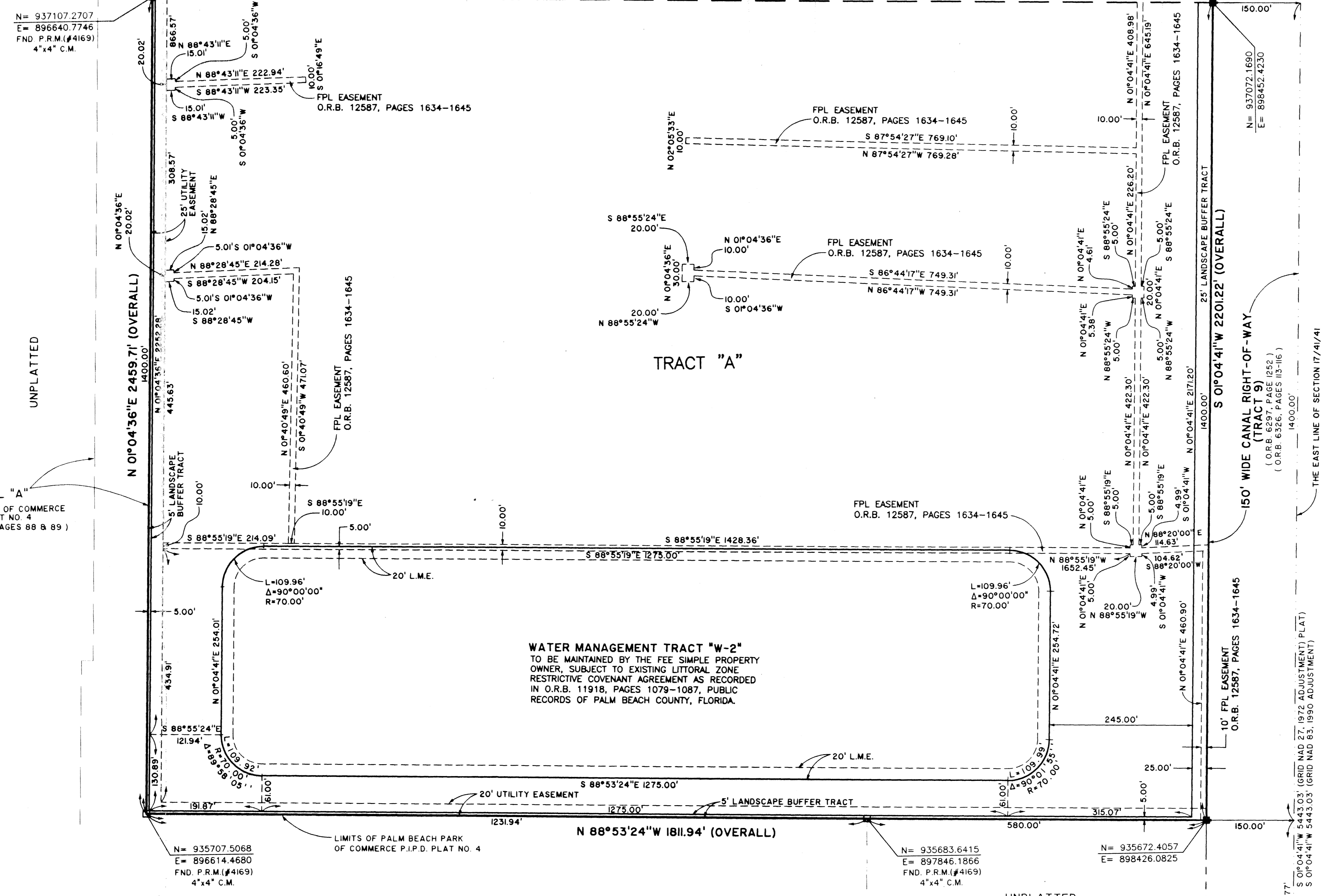
A PORTION OF PALM BEACH PARK OF COMMERCE, A P.I.P.D. LYING IN SECTION 17, TOWNSHIP 41 SOUTH, RANGE 41 EAST, PUBLIC RECORDS OF PALM BEACH COUNTY, FLORIDA. SHEET 3 OF 3



STATE OF FLORIDA SS
COUNTY OF PALM BEACH
THIS PLAT WAS FILED FOR RECORD AT _____
M. THIS DAY OF _____ 2001
AND DULY RECORDED IN PLAT BOOK NO. _____
ON PAGE _____
DOROTHY H. WILKEN,
CLERK OF THE CIRCUIT COURT
BY _____ D.C.

MATCH LINE (SEE SHEET 2 OF 3)

N = 937107.2707
E = 896640.7746
FND. P.R.M. (#4169)
4"x4" C.M.



UNPLATTED

PARCEL "A"
PALM BEACH PARK OF COMMERCE
P.I.P.D. PLAT NO. 4
(PLAT BOOK 68, PAGES 88 & 89)

WATER MANAGEMENT TRACT "W-2"
TO BE MAINTAINED BY THE FEE SIMPLE PROPERTY
OWNER, SUBJECT TO EXISTING LITTORAL ZONE
RESTRICTIVE COVENANT AGREEMENT AS RECORDED
IN O.R.B. 11918, PAGES 1079-1087, PUBLIC
RECORDS OF PALM BEACH COUNTY, FLORIDA.

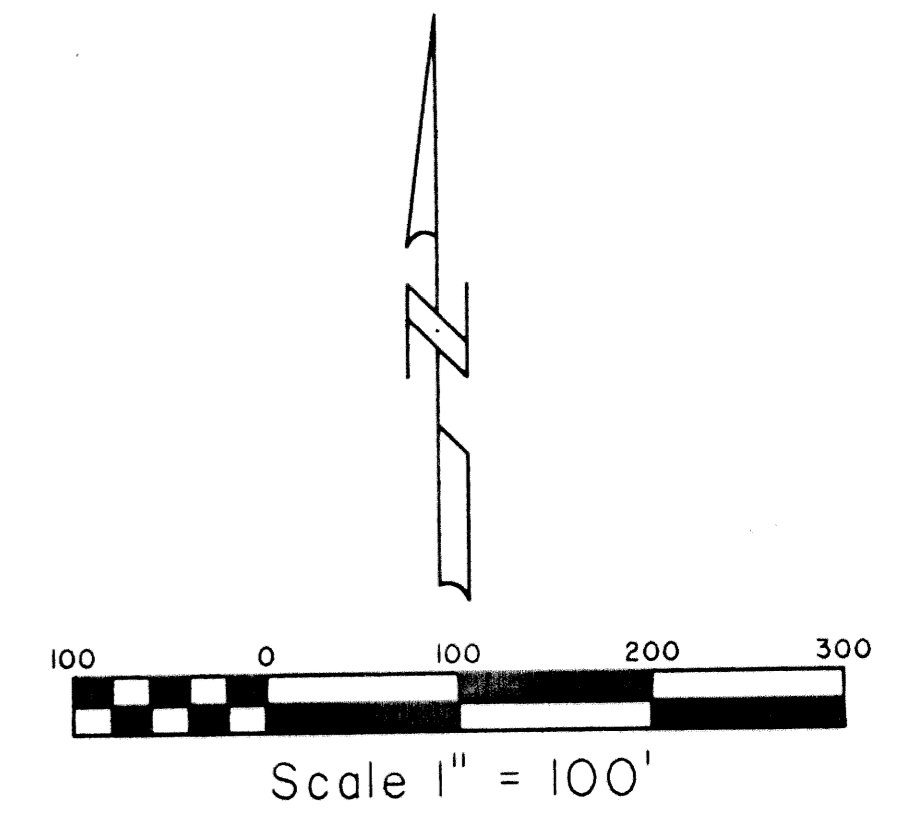
N = 935707.5068
E = 896614.4680
FND. P.R.M. (#4169)
4"x4" C.M.

PARCEL "A"
PALM BEACH PARK OF COMMERCE
P.I.P.D. PLAT NO. 4
(PLAT BOOK 68, PAGES 88 & 89)

N = 935683.6415
E = 897846.1866
FND. P.R.M. (#4169)
4"x4" C.M.

N = 935672.4057
E = 898426.0825
4"x4" C.M.

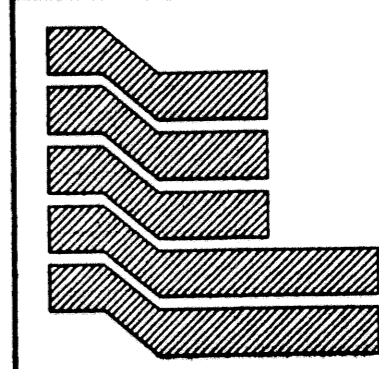
UNPLATTED



SE. CORNER OF SECTION 17,
TOWNSHIP 41 S., RANGE 41 E.



COORDINATE NOTE:
STATE PLANE COORDINATES SHOWN ARE GRID DATUM, NAD 83 1990
ADJUSTMENT, FLORIDA EAST ZONE, COORDINATE SYSTEM 1983 STATE
PLANE, TRANSVERSE MERCATOR PROJECTION
LINEAR UNIT = US SURVEY FEET
ALL DISTANCES ARE GROUND
SCALE FACTOR = 1.000007972
GROUND DISTANCE X SCALE FACTOR = GRID DISTANCE
BEARINGS AS SHOWN HERON ARE GRID DATUM, NAD 83 1990
ADJUSTMENT, FLORIDA EAST ZONE.



Landmark Surveying & Mapping Inc.
1850 Forest Hill Boulevard
Ph. (561) 433-5405 Suite 100 W.P.B. Florida
LB # 4396

WALGREENS-DISTRIBUTION CENTER

Handwritten notes:
WALGREENS - Distribution Center
PAGE 129
PLAT BOOK 68
ZONING P.I.P.D.
ZIP CODE 33478
FOR NAME: Walgreens - Distribution Center