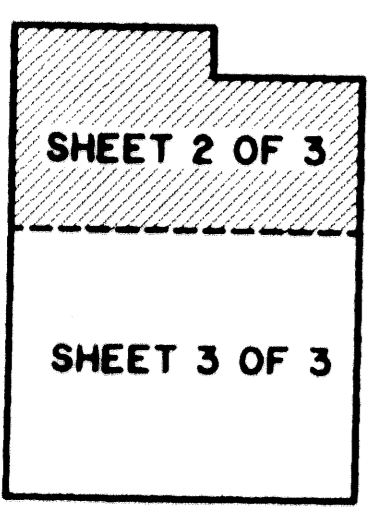


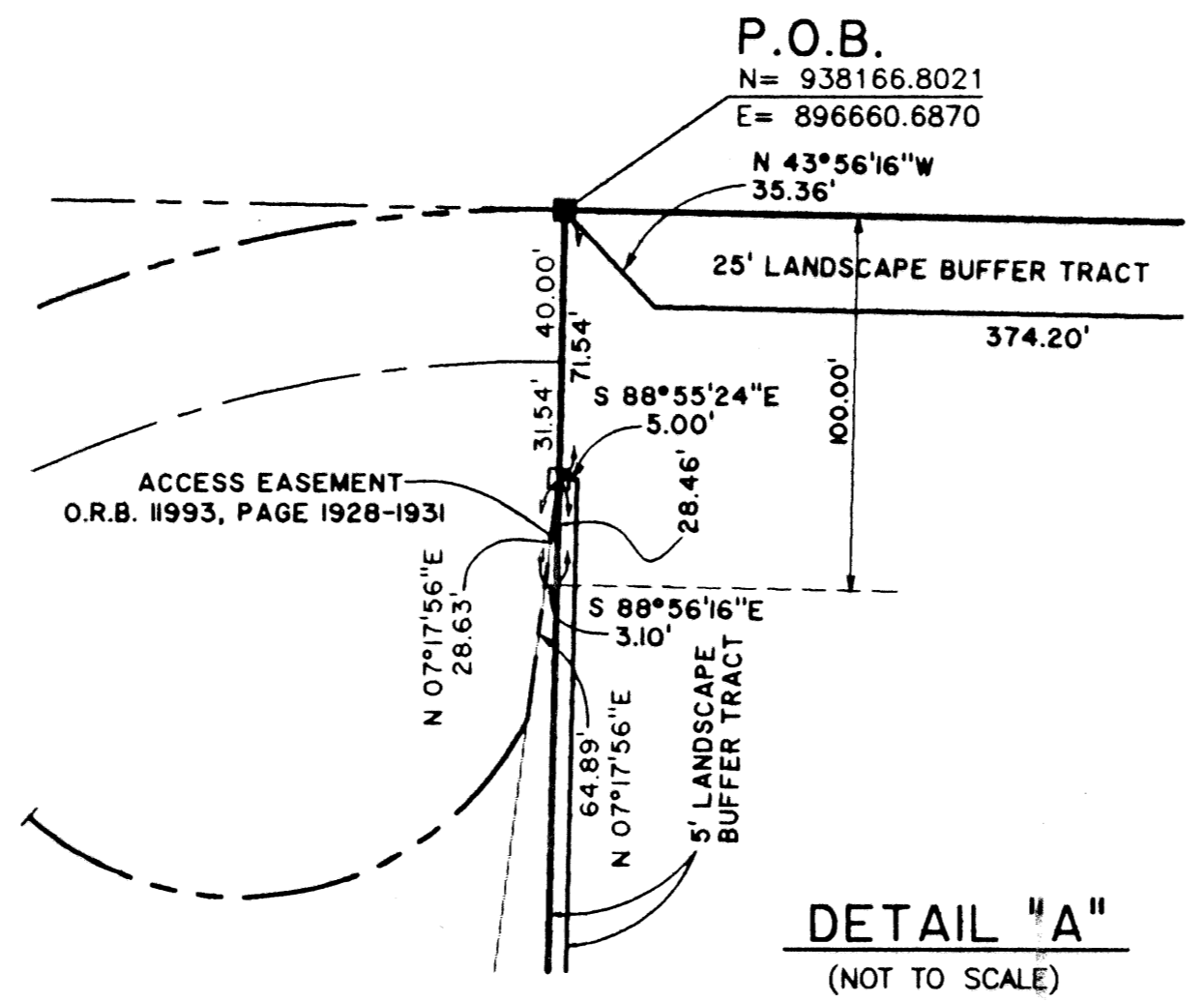
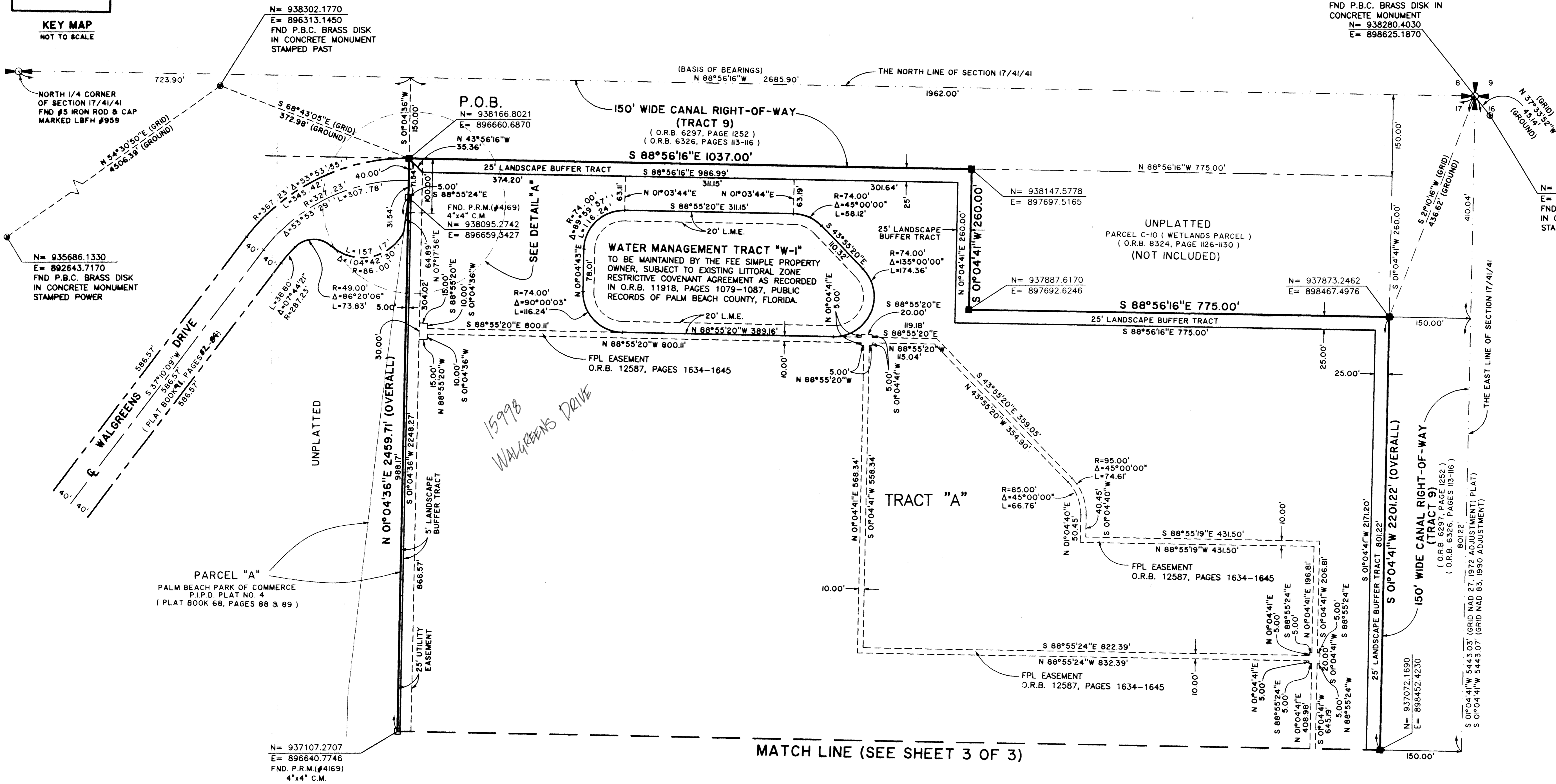
# WALGREENS - DISTRIBUTION CENTER

A PORTION OF PALM BEACH PARK OF COMMERCE, A P.I.P.D.  
LYING IN SECTION 17, TOWNSHIP 41 SOUTH, RANGE 41 EAST,  
PUBLIC RECORDS OF PALM BEACH COUNTY, FLORIDA.  
SHEET 2 OF 3

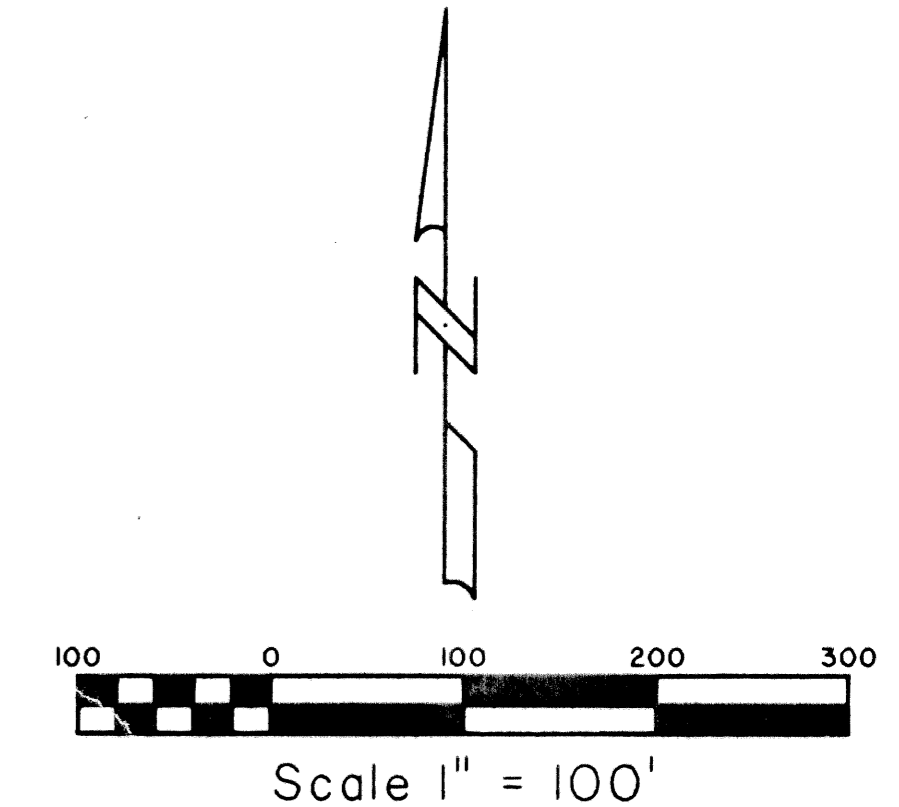


P.O.C.  
NE CORNER OF SECTION 17,  
TOWNSHIP 41 S., RANGE 41 E.  
FND P.B.C. BRASS DISK IN  
CONCRETE MONUMENT  
N= 938280.4030  
E= 898625.1870

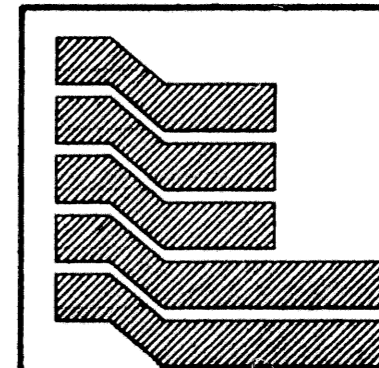
STATE OF FLORIDA SS  
COUNTY OF PALM BEACH  
THIS PLAT WAS FILED FOR RECORD AT \_\_\_\_\_  
M. THIS DAY OF \_\_\_\_\_ 2001  
AND DULY RECORDED IN PLAT BOOK NO. \_\_\_\_\_  
ON PAGE \_\_\_\_\_  
DOROTHY H. WILKEN,  
CLERK OF THE CIRCUIT COURT  
BY \_\_\_\_\_ D.C.



**COORDINATE NOTE:**  
STATE PLANE COORDINATES SHOWN ARE GRID DATUM, NAD 83 1990  
ADJUSTMENT, FLORIDA EAST ZONE, COORDINATE SYSTEM 1983 STATE  
PLANE, TRANSVERSE MERCATOR PROJECTION  
LINEAR UNIT = US SURVEY FEET  
ALL DISTANCES ARE GROUND  
SCALE FACTOR = 1.000007972  
GROUND DISTANCE X SCALE FACTOR = GRID DISTANCE  
BEARINGS AS SHOWN HERON ARE GRID DATUM, NAD 83 1990  
ADJUSTMENT, FLORIDA EAST ZONE.



*WALGREENS - Distribution Center*  
PAGE 128  
FIELD MAP  
ZIPPING P.I.P.D.  
TAX 830  
ZIP CODE 33478  
P.O. NAME: Walgreens - Distribution Center



Landmark Surveying & Mapping Inc.  
1850 Forest Hill Boulevard  
Ph. (561) 433-5405 Suite 100 W.P.B. Florida  
LB # 4396

**WALGREENS-DISTRIBUTION CENTER**