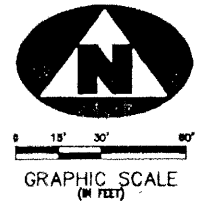
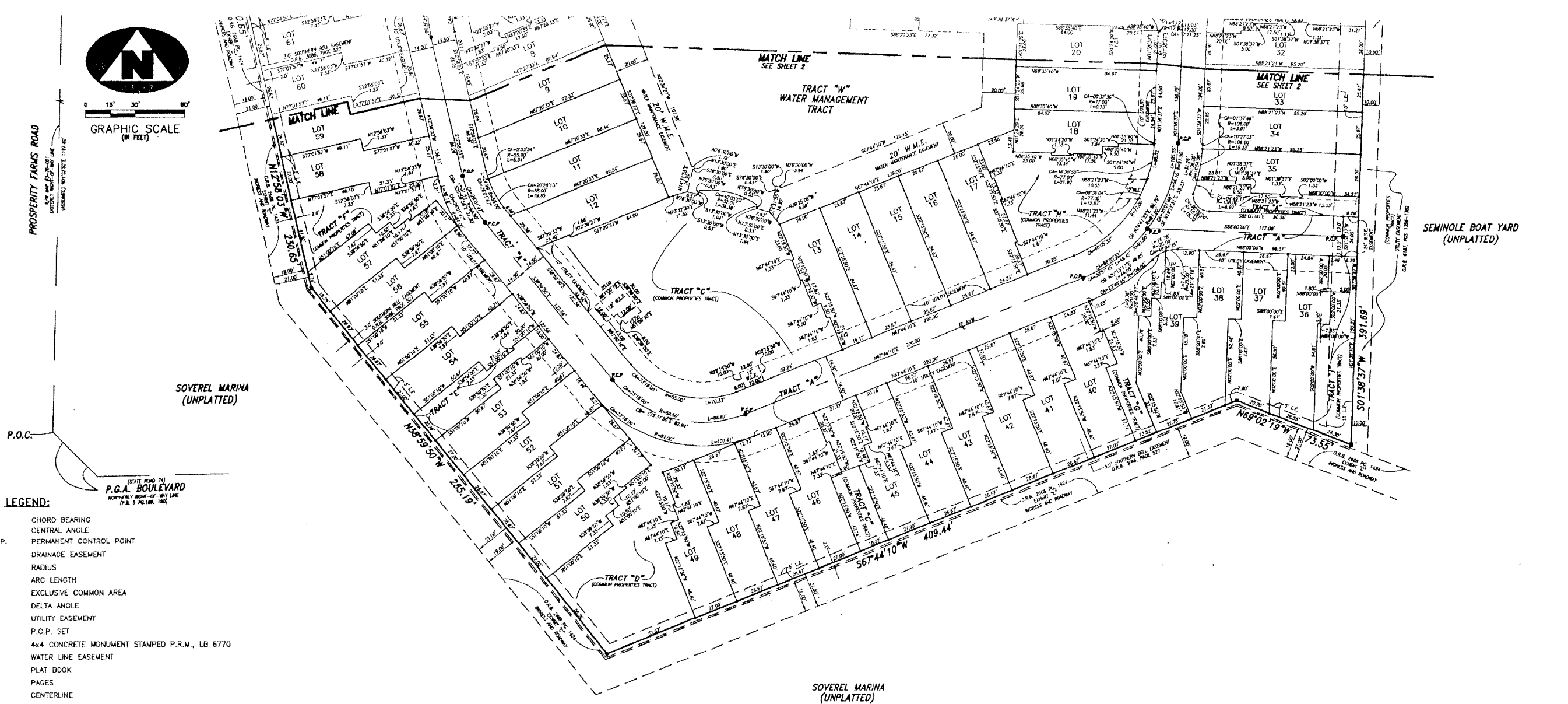


MARINA GARDENS PLAT II

BEING A PARCEL OF LAND IN THE NORTHEAST QUARTER (NE 1/4) OF SECTION 5,
TOWNSHIP 42 SOUTH, RANGE 43 EAST, CITY OF PALM BEACH GARDENS,
PALM BEACH COUNTY, FLORIDA
JULY, 2001

STATE OF FLORIDA
COUNTY OF PALM BEACH
THIS PLAT WAS FILED FOR RECORD AT
THIS _____ DAY OF _____
A.D. 2001 AND DULY
RECORDED IN PLAT BOOK _____
PAGES _____ THROUGH _____ ON _____
DOROTHY H. WILKEN
CLERK OF THE CIRCUIT COURT
BY: _____ DEPUTY CLERK

123



- LEGEND:**
- CB CHORD BEARING
 - CA CENTRAL ANGLE
 - P.C.P. PERMANENT CONTROL POINT
 - DE DRAINAGE EASEMENT
 - R RADIUS
 - L ARC LENGTH
 - ECA EXCLUSIVE COMMON AREA
 - Δ DELTA ANGLE
 - U.E. UTILITY EASEMENT
 - P.C.P. SET
 - 4x4 CONCRETE MONUMENT STAMPED P.R.M., LB 6770
 - WLE WATER LINE EASEMENT
 - P.B. PLAT BOOK
 - PGS PAGES
 - CL CENTERLINE
 - IEE INGRESS EGRESS EASEMENT
 - LE LANDSCAPE EASEMENT
 - PC POINT OF CURVATURE
 - PT POINT OF TANGENCY
 - SLE SEWER LINE EASEMENT
 - R/W RIGHT OF WAY
 - L.B. LICENSED BUSINESS
 - P.S.&M. PROFESSIONAL SURVEYOR & MAPPER
 - PRM PERMANENT REFERENCE MONUMENT
 - P.O.C. POINT OF COMMENCEMENT
 - P.O.B. POINT OF BEGINNING
 - SET IRON ROD AND CAP (LB 6770)
 - O.R.B. OFFICIAL RECORD BOOK

MARINA GARDENS PLAT II

CANNEY-NEUHAR, INC.
SURVEYORS

11811 U.S. HIGHWAY 1, SUITE 100 PALM BEACH, FLORIDA 33408
PHONE: (561) 852-2244 FAX: (561) 852-1428
3000 BUCKINGHAM BOULEVARD, SUITE 200 FORT LAUDERDALE, FLORIDA 33304
PHONE: (772) 349-2244 FAX: (772) 349-2244

FIELD	PROJ. # 99-024	F.B.	PG.
OFFICE JEM/JLC	DATE: 9-24-99	DWG. NO. COVER	SCALE: 1"=30'
C'KD: R.J.K.	REF:	SHEET:	3 of 3