

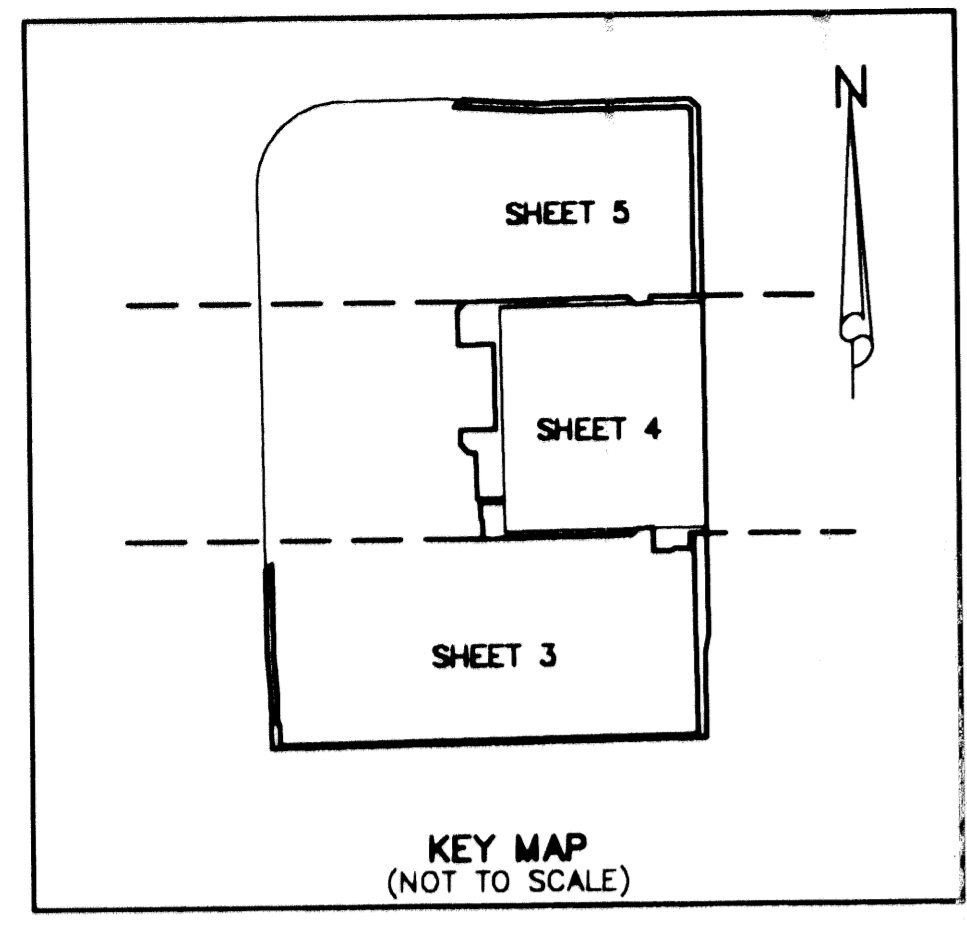
# LESTER P.U.D. PLAT SIX

BEING A REPLAT OF TRACTS "I", "K", "M", "N", "R" AND LOTS 38, 44 AND 45 OF LESTER P.U.D.— PLAT FOUR, AS RECORDED IN PLAT BOOK 88, PAGES 126-131, PUBLIC RECORDS OF PALM BEACH COUNTY, FLORIDA, AND TRACTS "G", "J" AND LOTS 49 AND 108 OF LESTER P.U.D.— PLAT FIVE, AS RECORDED IN PLAT BOOK 88, PAGES 78-83, PUBLIC RECORDS OF PALM BEACH COUNTY, FLORIDA, AND A PORTION OF THE SOUTHEAST ONE-QUARTER (SE 1/4) OF SECTION 35, TOWNSHIP 45 SOUTH, RANGE 42 EAST, PALM BEACH COUNTY, FLORIDA.

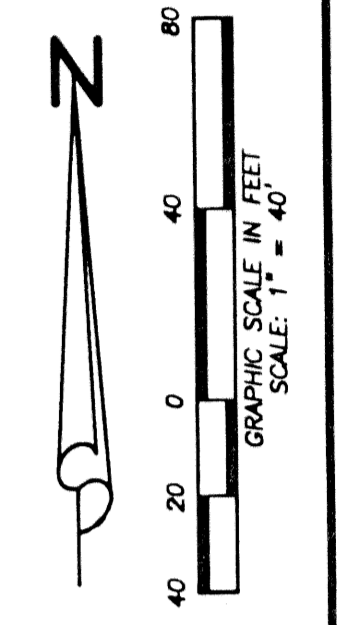
MAY, 2001 SHEET 3 OF 5

- LEGEND:**
- (C) = CALCULATED
  - CMB = COMMISSIONERS' MINUTES BOOK
  - DE = DRAINAGE EASEMENT
  - DB = DEED BOOK
  - FND = FOUND
  - FPL = FLORIDA POWER & LIGHT
  - IP = IRON PIPE
  - IRC = IRON ROD WITH PLASTIC CAP
  - LAE = LIMITED ACCESS EASEMENT
  - LB = LICENSE BUSINESS
  - LBE = LANDSCAPE BUFFER EASEMENT
  - LME = LAKE MAINTENANCE EASEMENT
  - LMAE = LAKE MAINTENANCE ACCESS EASEMENT
  - LS = LICENSE SURVEYOR
  - LWDD = LAKE WORTH DRAINAGE DISTRICT
  - (M) = MEASURED
  - MON = MONUMENT
  - ORB = OFFICIAL RECORD BOOK
  - (P) = PLAT
  - PB = PLAT BOOK

STATE OF FLORIDA } S.S.  
 COUNTY OF PALM BEACH }  
 THIS PLAT WAS FILED FOR  
 RECORD AT \_\_\_\_\_ DAY OF  
 THIS \_\_\_\_\_ AD. 20\_\_\_\_ AND  
 DULY RECORDED IN PLAT BOOK  
 \_\_\_\_\_ ON PAGES \_\_\_\_\_ AND  
 \_\_\_\_\_  
 DOROTHY H. WILKEN, CLERK  
 CIRCUIT COURT  
 BY: \_\_\_\_\_ DC



- LEGEND:**
- PG = PAGE(S)
  - POB = POINT OF BEGINNING
  - POC = POINT OF COMMENCEMENT
  - PRM = PERMANENT REFERENCE MONUMENT
  - RR = RADIAL TO REAR LOT LINE
  - RF = RADIAL TO FRONT LOT LINE
  - R/W = RIGHT-OF-WAY
  - RFB = ROAD PLAT BOOK
  - (S) = SURVEY
  - UE = UTILITY EASEMENT
  - ZLLME = ZERO LOT LINE MAINTENANCE EASEMENT
  - ⊙ = SET PERMANENT CONTROL POINT (PCP) "LB#7055"
  - = SET 4"x4" CONCRETE MONUMENT "LB#7055" UNLESS OTHERWISE SHOWN



CAD K:\LEVIT\LESTER\DWG\LESTPLT6		JOB	00-031B	DWG	00-022
REF K:\LEVIT\LESTER\DWG\LESTM001	PL	DATE	12/20/00	SHEET	3 OF 5
FLD	RP/AB	FB	PG.	RBP	
OFF	AJP				
CKD					

**Wantman Group, Inc.**  
 Engineering • Surveying • Mapping  
 901 NORTHPONT PARKWAY, SUITE 204  
 WEST PALM BEACH, FL 33407  
 (561) 687-2220 phone (561) 687-1110 fax  
 CERT No. 6091 - LB No. 7055

LESTER PUD PLAT 6  
 PAGE 105  
 FLOODPLAIN ZONING PUD  
 ZIP CODE 33437  
 THE 454 LESTER PUD  
 PUD RANGE

FND PBCO  
 BRASS DISC IN CONC  
 SE CORNER  
 S35/T45S/R42E  
 PALM BEACH COUNTY  
 CONTROL STATION "TIM"  
 N 787934.4375  
 E 942915.6292