

TUSCANY - PARCEL A/B REPLAT

A PLANNED UNIT DEVELOPMENT BEING A PART CIBA GEIGY PUD
 A REPLAT OF TRACTS A, B, C, D, E, G, H AND L-4, "TUSCANY PARCEL A/B"
 AS RECORDED IN PLAT BOOK 89, PAGES 145 THROUGH 148 OF THE PUBLIC RECORDS
 OF PALM BEACH COUNTY, FLORIDA LYING IN SECTIONS 20 AND 21, TOWNSHIP 45 SOUTH, RANGE 42 EAST,
 PALM BEACH COUNTY, FLORIDA

THIS INSTRUMENT PREPARED BY
 DAVID P. LINDLEY
 OF
CAULFIELD and WHEELER, INC.
 SURVEYORS
 7301-A WEST PALMETTO PARK ROAD, SUITE 100
 BOCA RATON, FLORIDA 33433 - (561)992-1991
 JANUARY - 2001

NOTES
 COORDINATES, BEARINGS AND DISTANCES
 COORDINATES SHOWN ARE GRID
 DATUM = NAD 83 1990 ADJUSTMENT
 ZONE = FLORIDA EAST
 LINEAR UNIT = US SURVEY FEET
 COORDINATE SYSTEM 1983 STATE PLANE
 TRANSVERSE MERCATOR PROJECTION
 ALL DISTANCES ARE GROUND
 SCALE FACTOR = 1.0000287
 GROUND DISTANCE X SCALE FACTOR = GRID DISTANCE
 BEARINGS AS SHOWN HEREON ARE GRID DATUM, NAD 83 1990
 ADJUSTMENT, FLORIDA EAST ZONE.

97

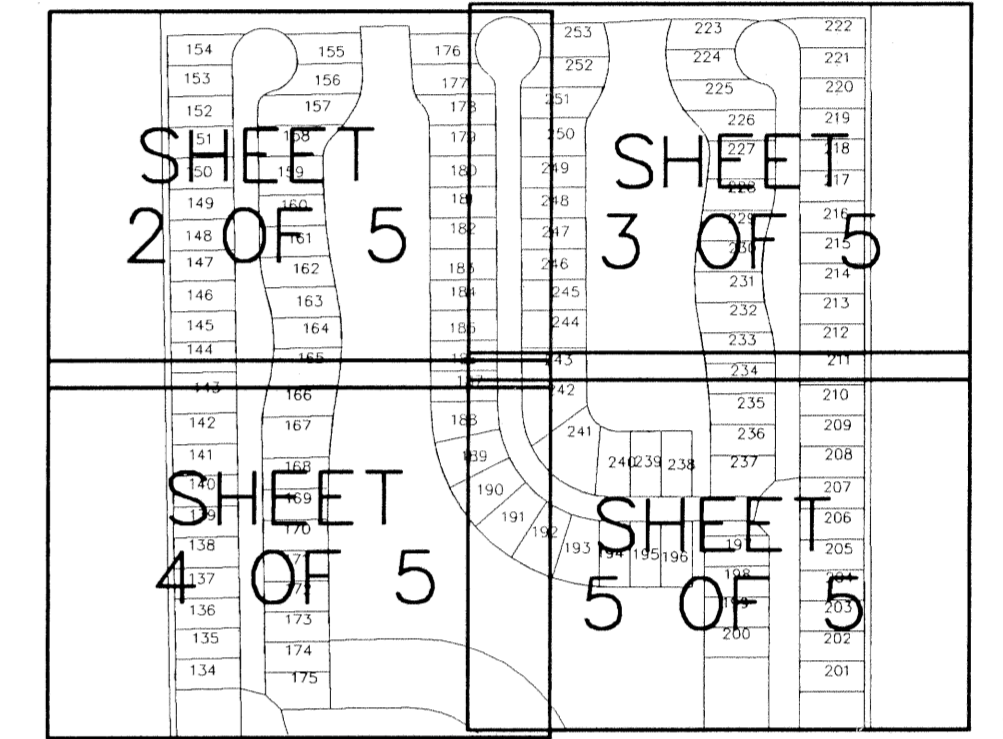
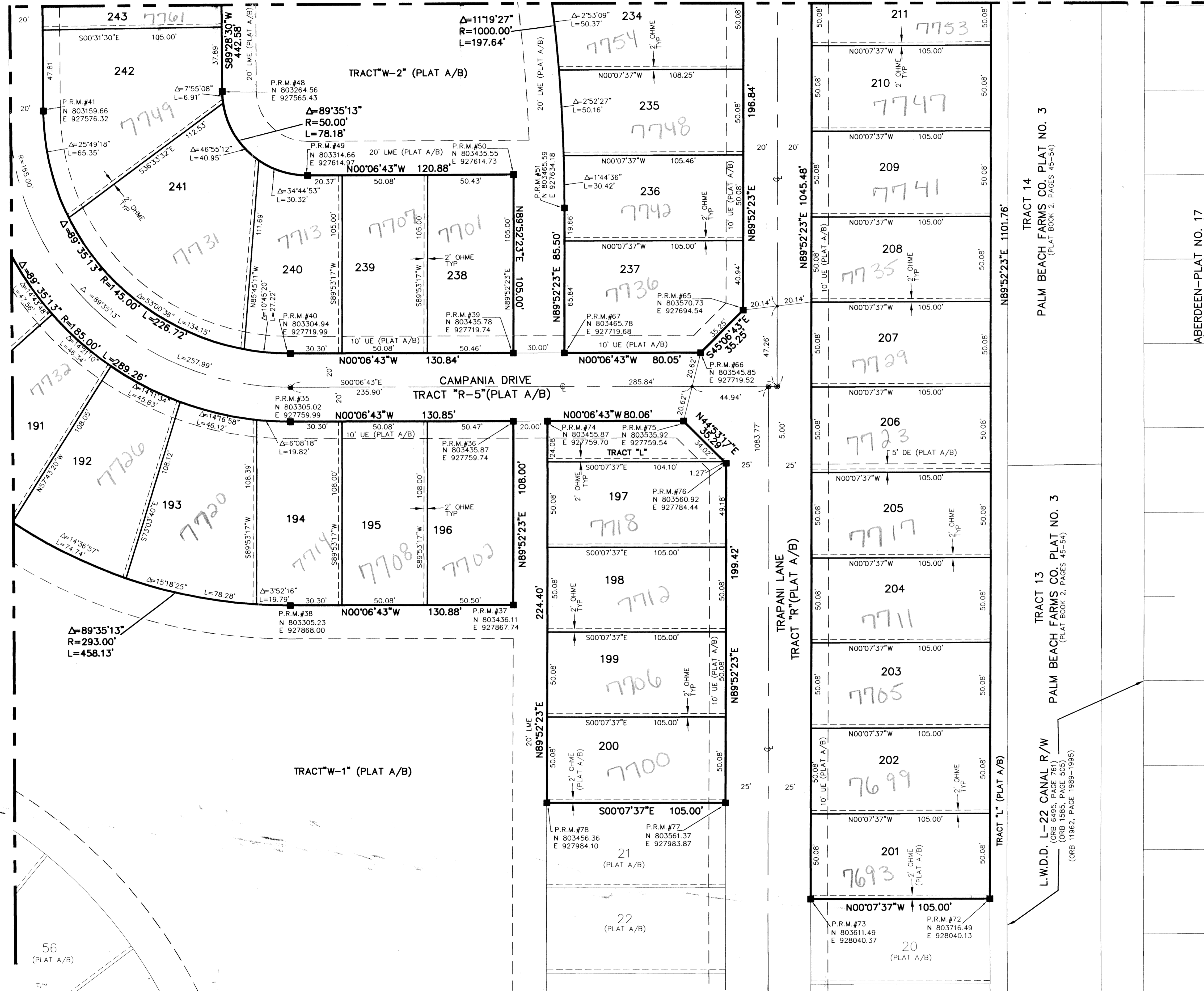
STATE OF FLORIDA
 COUNTY OF PALM BEACH
 THIS PLAT WAS FILED FOR
 RECORD AT _____ M.
 THIS _____ DAY OF _____
 A.D. 2001 AND DULY RECORDED
 IN PLAT BOOK _____ ON
 PAGES _____ AND _____
 DOROTHY H. WILKEN
 CLERK CIRCUIT COURT

BY: _____
 DEPUTY CLERK

SHEET 5 OF 5

MATCH LINE SEE SHEET 3 OF 5

MATCH LINE SEE SHEET 4 OF 5



KEY MAP N.T.S. NORTH

91 Tuscany 97 185A
 CIBA GEIGY PUD
 950
 Ciba Geigy PUD