

CARNAHAN · PROCTOR · CROSS, INC.

CONSULTING ENGINEERS · SURVEYORS · PLANNERS

6101 WEST ATLANTIC BOULEVARD, MARGATE, FLORIDA 33063

PHONE: 954-972-3959 FAX: 954-972-4178

JUNE 2000 990616 JSH

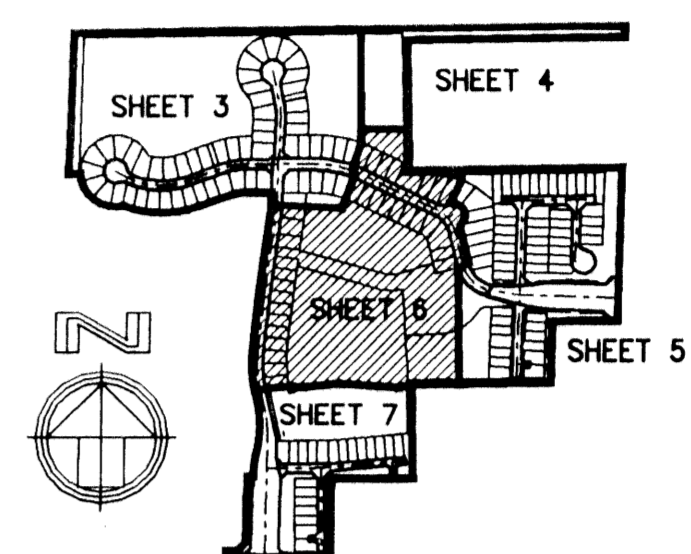
THOROUGHbred LAKE ESTATES PLAT 1

A REPLAT OF A PORTION OF BLOCK 35, "PALM BEACH FARMS CO. PLAT NO. 3" (P.B.2, PGS.45-54, P.B.C.R.) AND THE RIGHTS-OF-WAY INCLUDED THEREIN, IN SECTION 36, TOWNSHIP 44 SOUTH, RANGE 41 EAST, PALM BEACH COUNTY, FLORIDA

THOROUGHbred LAKE P.U.D.

AS ABANDONED TRACT 21

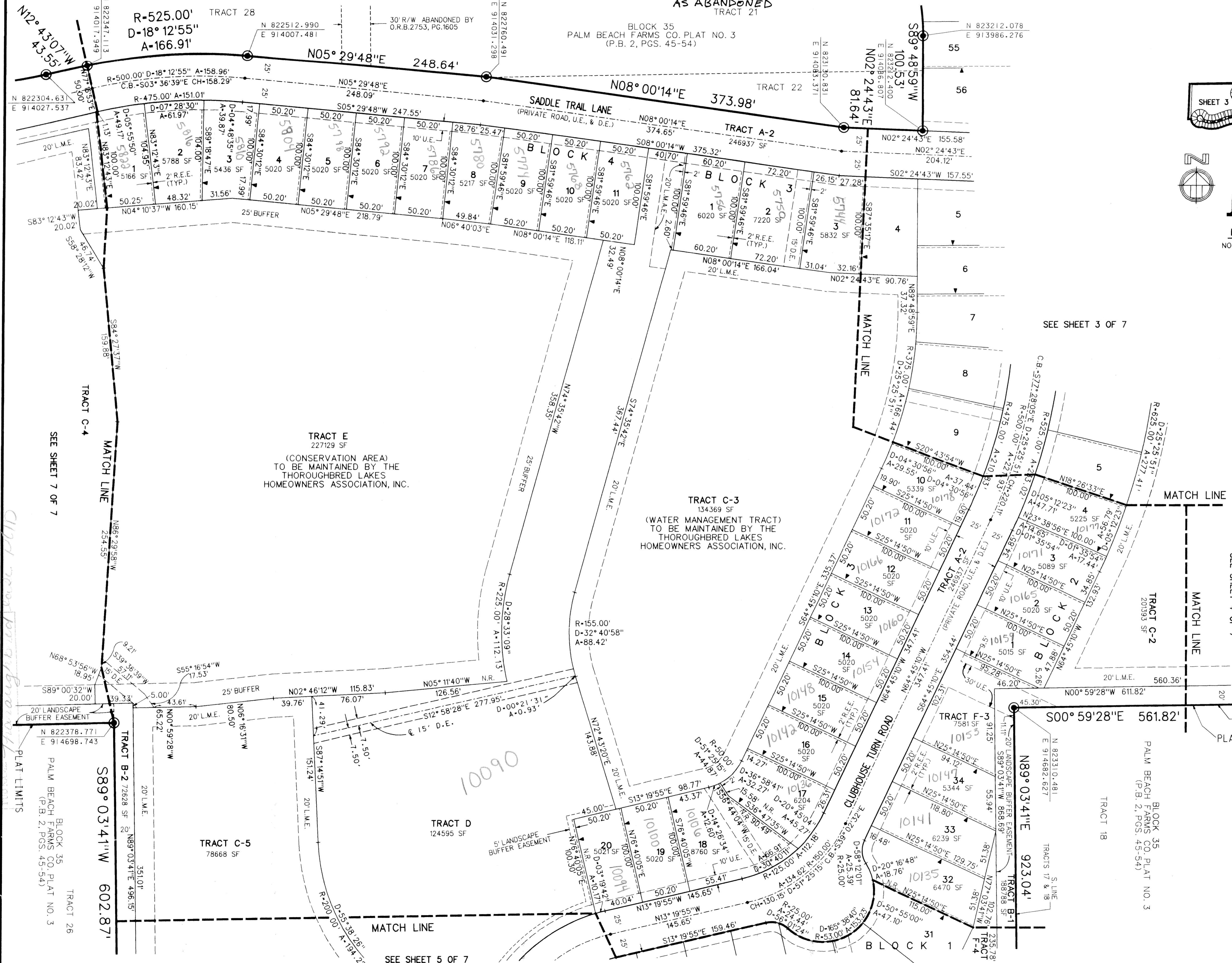
BLOCK 35
PALM BEACH FARMS CO. PLAT NO. 3
(P.B. 2, PGS. 45-54)



KEY MAP
NOT TO SCALE

80

SHEET 6 OF 7



SCALE: 1"=50'

LEGEND:

- SET PERMANENT REFERENCE MONUMENT (P.R.M.) • LB2936 UNLESS OTHERWISE NOTED
- PERMANENT CONTROL POINT (P.C.P.)
- INDICATOR OF ZERO LOT SIDE
- CENTERLINE
- ARC LENGTH
- Δ DELTA (CENTRAL ANGLE)
- D.E. DRAINAGE EASEMENT
- L.A.E. LIMITED ACCESS EASEMENT
- L.M.A.E. LAKE MAINTENANCE ACCESS EASEMENT
- L.M.E. LAKE MAINTENANCE EASEMENT
- L.S.E. LIFT STATION EASEMENT
- L.W.D.D. LAKE WORTH DRAINAGE DISTRICT
- N.R. NON-RADIAL
- O.R.B. OFFICIAL RECORDS BOOK
- PG. PAGE
- P.B. PLAT BOOK
- P.B.C.R. PALM BEACH COUNTY RECORDS
- P.O.B. POINT OF BEGINNING
- P.O.C. POINT OF COMMENCEMENT
- P.U.D. PLANNED UNIT DEVELOPMENT
- R. RADIUS
- R.E.E. ROOF ENCROACHMENT EASEMENT
- R/W. RIGHT-OF-WAY
- SF. SQUARE FEET
- U.E. UTILITY EASEMENT
- CH. CHORD
- C.B. CHORD BEARING

102
 101
 100
 99
 98
 97
 96
 95
 94
 93
 92
 91
 90
 89
 88
 87
 86
 85
 84
 83
 82
 81
 80
 79
 78
 77
 76
 75
 74
 73
 72
 71
 70
 69
 68
 67
 66
 65
 64
 63
 62
 61
 60
 59
 58
 57
 56
 55
 54
 53
 52
 51
 50
 49
 48
 47
 46
 45
 44
 43
 42
 41
 40
 39
 38
 37
 36
 35
 34
 33
 32
 31
 30
 29
 28
 27
 26
 25
 24
 23
 22
 21
 20
 19
 18
 17
 16
 15
 14
 13
 12
 11
 10
 9
 8
 7
 6
 5
 4
 3
 2
 1

SEE SHEET 5 OF 7

SEE SHEET 3 OF 7

SEE SHEET 4 OF 7

SEE SHEET 7 OF 7