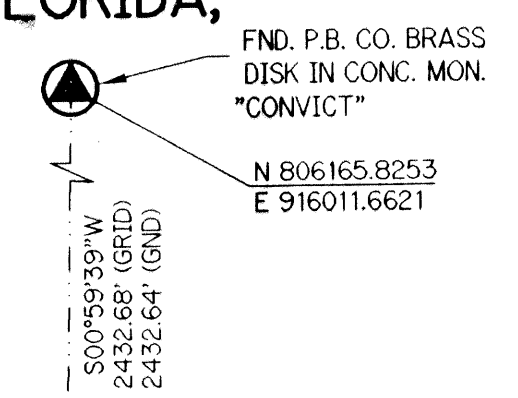
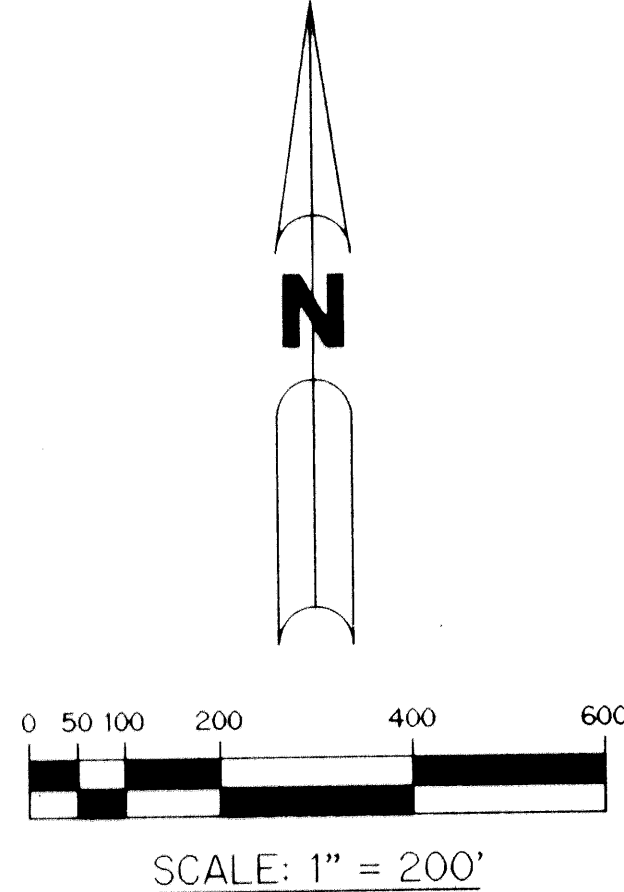


SUSSMAN - PLAT FOUR

BEING A REPLAT OF TRACTS 3, 8, 9, 17, 18, 19, 20 AND 30 AND A PORTION OF TRACTS 16 AND 21, ALL LYING WITHIN BLOCK 52, PALM BEACH FARMS COMPANY
 PLAT NO. 3, AS RECORDED IN PLAT BOOK 2, PAGE 45, PUBLIC RECORDS OF PALM BEACH COUNTY FLORIDA,
 LYING IN SECTION 24, TOWNSHIP 45 SOUTH, RANGE 41 EAST.

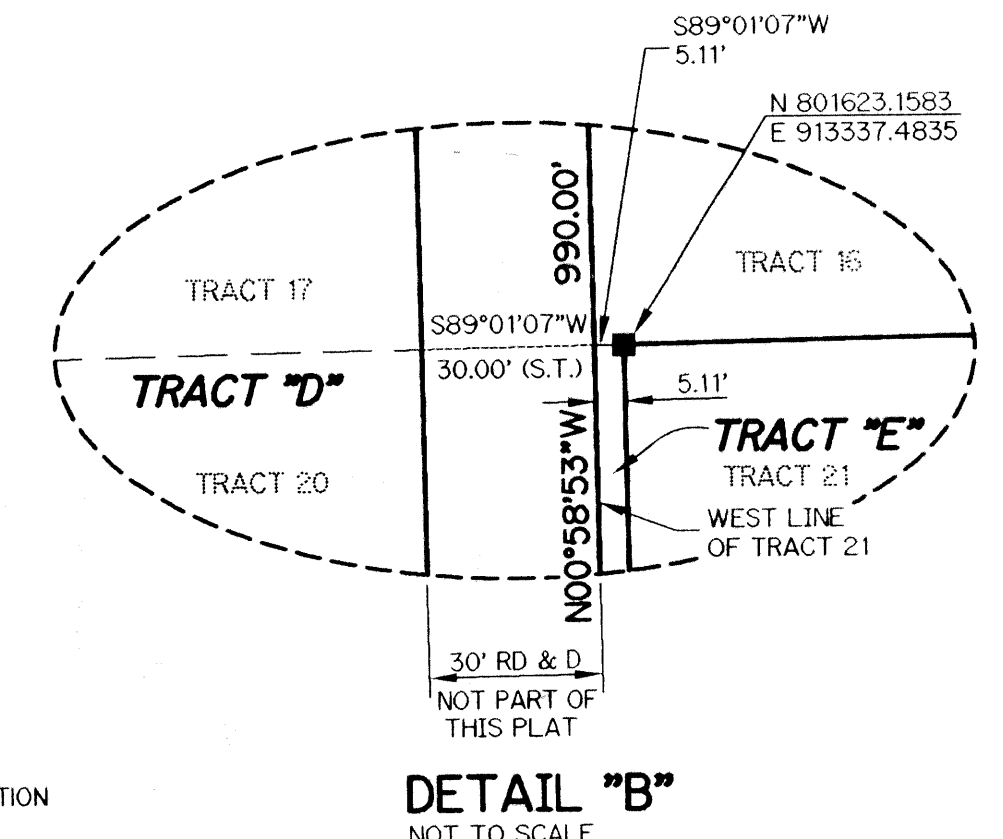
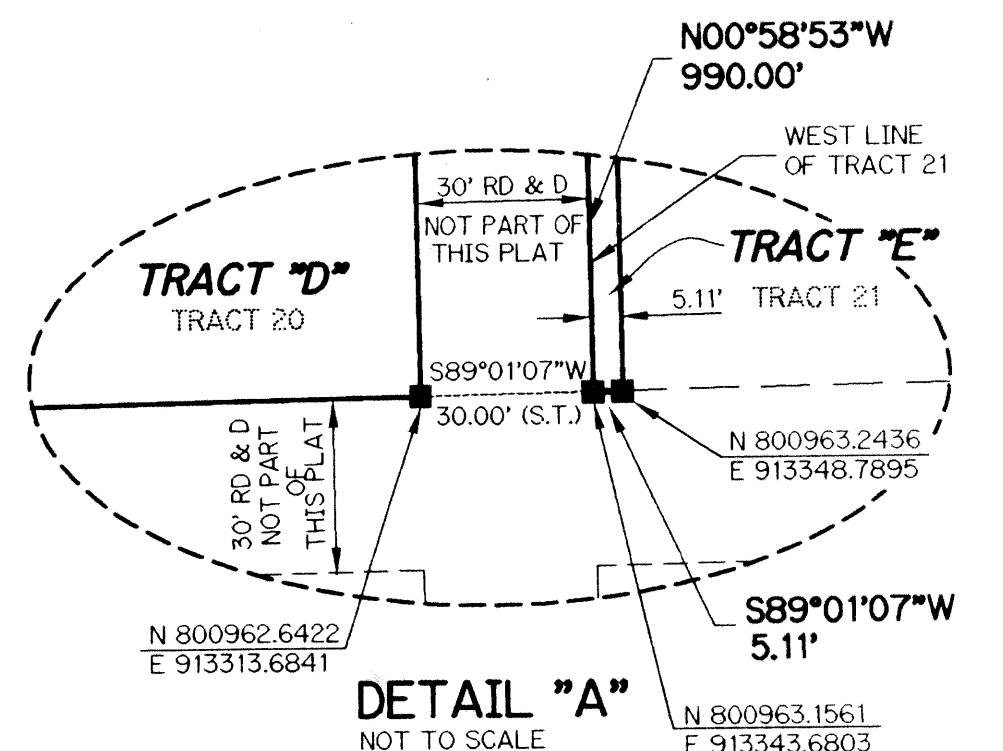
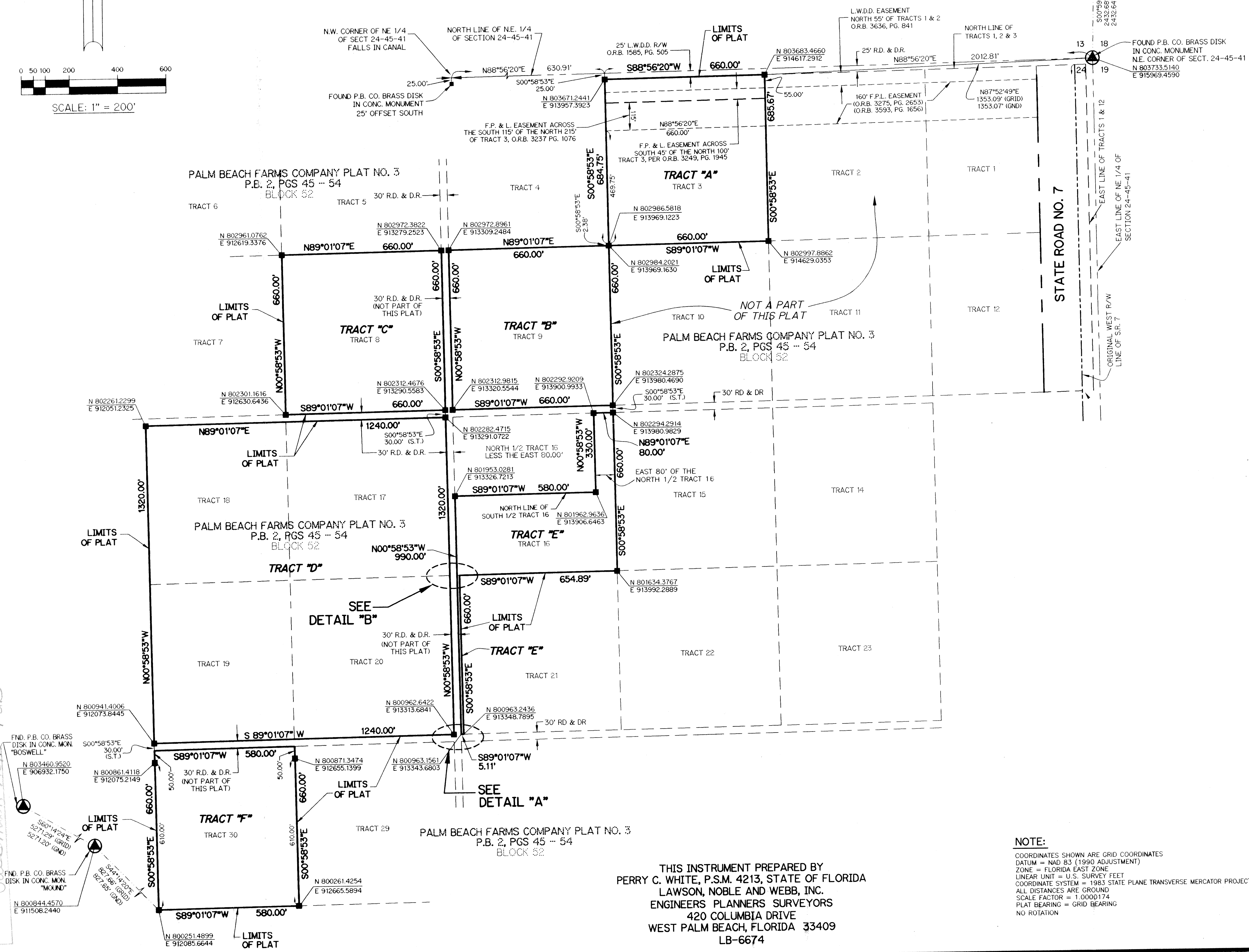
SHEET 2 OF 2 JANUARY, 2001



- LEGEND:**
- - SET PERMANENT REFERENCE MONUMENT, LB #6674
 - AC. - ACRES
 - CL - CENTERLINE
 - CONC. MON. - CONCRETE MONUMENT
 - D.B. - DEED BOOK
 - D.E. - DRAINAGE EASEMENT
 - FND. - FOUND
 - F.P.&L. - FLORIDA POWER & LIGHT COMPANY
 - GND. - GROUND
 - R.D. & D.R. - ROAD, DYKE & DITCH RESERVATION PER PALM BEACH FARMS PLAT NO. 3 PLAT BOOK 2, PAGE 45
 - L.W.D.D. - LAKE WORTH DRAINAGE DISTRICT
 - N.T.S. - NOT TO SCALE
 - O.R.B. - OFFICIAL RECORD BOOK
 - P.B. - PLAT BOOK
 - P.B.CO. - PALM BEACH COUNTY
 - P.B.F. PLAT NO. 3 - PALM BEACH FARMS COMPANY PLAT NO. 3 (P.B. 2, PGS. 45-54)
 - PGS. - PAGES
 - P.S.M. - PROFESSIONAL SURVEYOR AND MAPPER
 - R/W - RIGHT-OF-WAY
 - (S.T.) - SURVEY TIE
 - SQ. FT. - SQUARE FEET
 - U.E. - UTILITY EASEMENT
 - N 737648.0171 E 905258.2326 - DENOTES STATE PLANE COORDINATES
 - TRACT 1 - PALM BEACH FARMS PLAT NO. 3 TRACT

AREA TABULATION

TRACT	SQ. FT.	ACRES
TRACT "A"	452,239	10.382
TRACT "B"	435,600	10.000
TRACT "C"	435,600	10.000
TRACT "D"	1,636,800	37.576
TRACT "E"	247,573	5.683
TRACT "F"	382,800	8.788
TOTAL	3,590,612	82.429



SEE
DETAIL "B"

SEE
DETAIL "A"

NOTE:
 COORDINATES SHOWN ARE GRID COORDINATES
 DATUM = NAD 83 (1990 ADJUSTMENT)
 ZONE = FLORIDA EAST ZONE
 LINEAR UNIT = U.S. SURVEY FEET
 COORDINATE SYSTEM = 1983 STATE PLANE TRANSVERSE MERCATOR PROJECTION
 ALL DISTANCES ARE GROUND
 SCALE FACTOR = 1.0000174
 PLAT BEARING = GRID BEARING
 NO ROTATION

THIS INSTRUMENT PREPARED BY
 PERRY C. WHITE, P.S.M. 4213, STATE OF FLORIDA
 LAWSON, NOBLE AND WEBB, INC.
 ENGINEERS PLANNERS SURVEYORS
 420 COLUMBIA DRIVE
 WEST PALM BEACH, FLORIDA 33409
 LB-6674