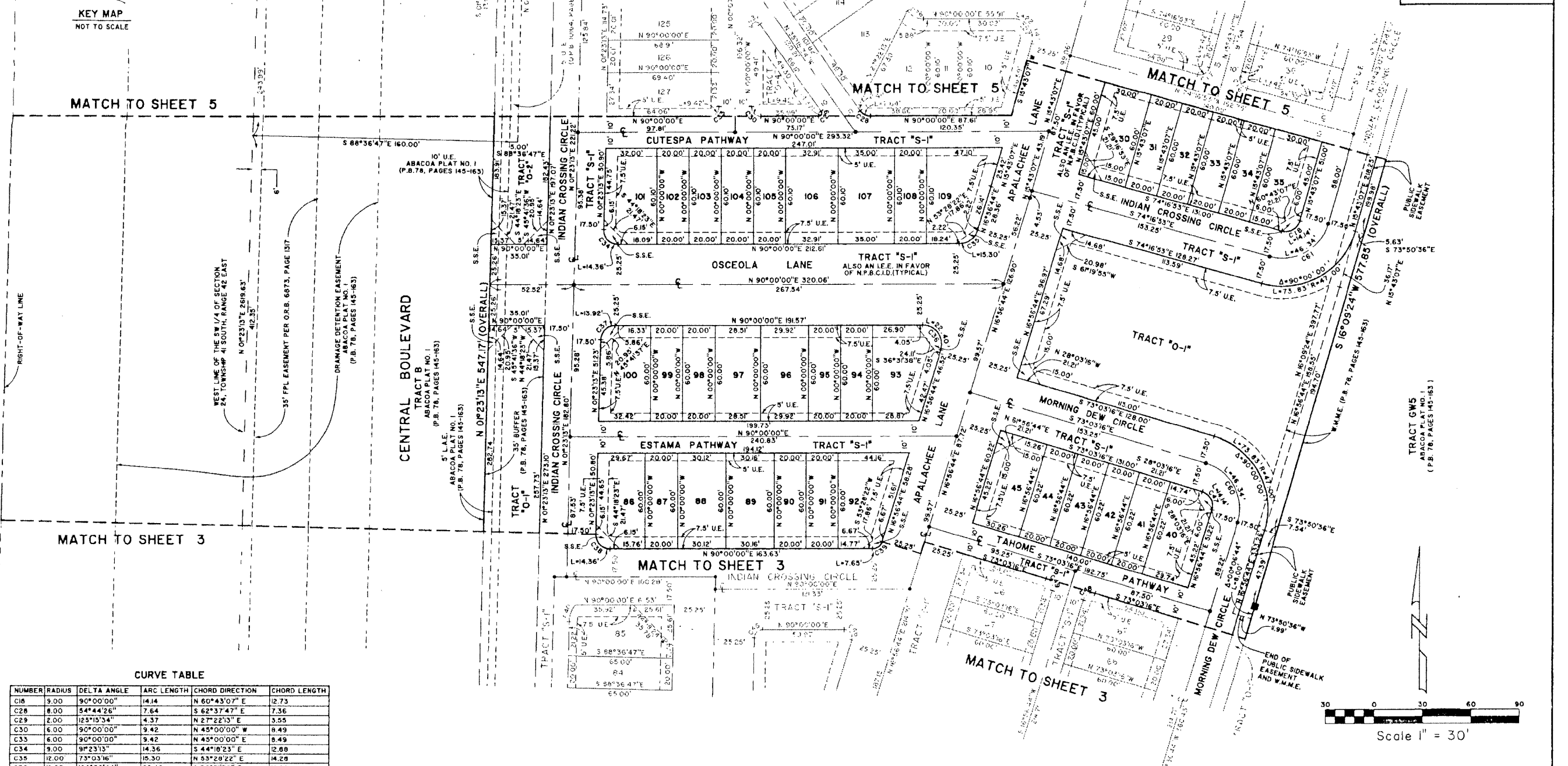
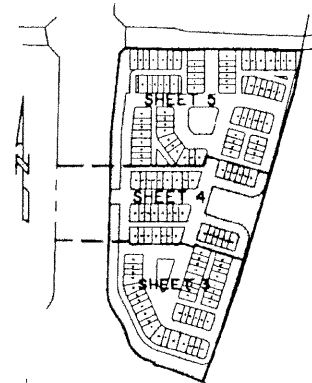


# OSCEOLA WOODS

BEING A REPLAT OF TRACT RD2B, ABACO PLAT NO. 1 AS RECORDED IN PLAT BOOK 78, PAGES 145 THROUGH 163, PUBLIC RECORDS OF PALM BEACH COUNTY, FLORIDA.  
 LYING IN SECTION 24, TOWNSHIP 41 SOUTH, RANGE 42 EAST,  
 TOWN OF JUPITER, PALM BEACH COUNTY, FLORIDA  
 JANUARY, 2001 SHEET 4 OF 5

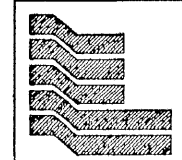
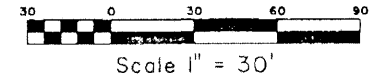
188

STATE OF FLORIDA 33  
 COUNTY OF PALM BEACH  
 THIS PLAT WAS FILED FOR RECORD AT \_\_\_\_\_  
 M. THIS DAY OF 2001  
 AND DULY RECORDED IN PLAT BOOK NO. \_\_\_\_\_  
 ON PAGE \_\_\_\_\_  
 DOROTHY H. WILKEN,  
 CLERK OF THE CIRCUIT COURT  
 BY \_\_\_\_\_ D.C.



**CURVE TABLE**

NUMBER	RADIUS	DELTA ANGLE	ARC LENGTH	CHORD DIRECTION	CHORD LENGTH
C16	9.00	90°00'00"	14.14	N 60°43'07" E	12.73
C28	8.00	54°44'26"	7.64	S 62°37'47" E	7.36
C29	2.00	125°15'34"	4.37	N 27°22'13" E	3.55
C30	6.00	90°00'00"	9.42	N 45°00'00" W	8.49
C33	6.00	90°00'00"	9.42	N 45°00'00" E	8.49
C34	9.00	9°23'13"	14.36	S 44°18'23" E	12.80
C35	12.00	73°03'16"	15.30	N 53°29'22" E	14.20
C36	12.00	106°56'44"	22.40	S 36°31'38" E	19.29
C37	9.00	88°36'47"	13.92	S 45°41'36" W	12.57
C38	9.00	9°23'13"	14.36	S 44°18'23" E	12.80
C39	6.00	73°03'16"	7.65	N 53°29'22" E	7.14
C47	9.00	90°00'00"	14.14	S 28°03'16" E	12.73
C48	6.00	90°00'00"	9.42	N 6°56'44" E	8.49
C49	6.00	90°00'00"	9.42	S 28°03'16" E	8.49
C60	29.50	90°00'00"	46.34	S 28°03'16" E	41.72
C61	29.50	90°00'00"	46.34	N 60°43'07" E	41.72



Landmark Surveying & Mapping Inc.  
 1850 Forest Hill Boulevard  
 Ph. (561) 433-5405 Suite 100 W.P.B. Florida  
 LB # 4396

OSCEOLA WOODS