

BALLENISLES POD 15

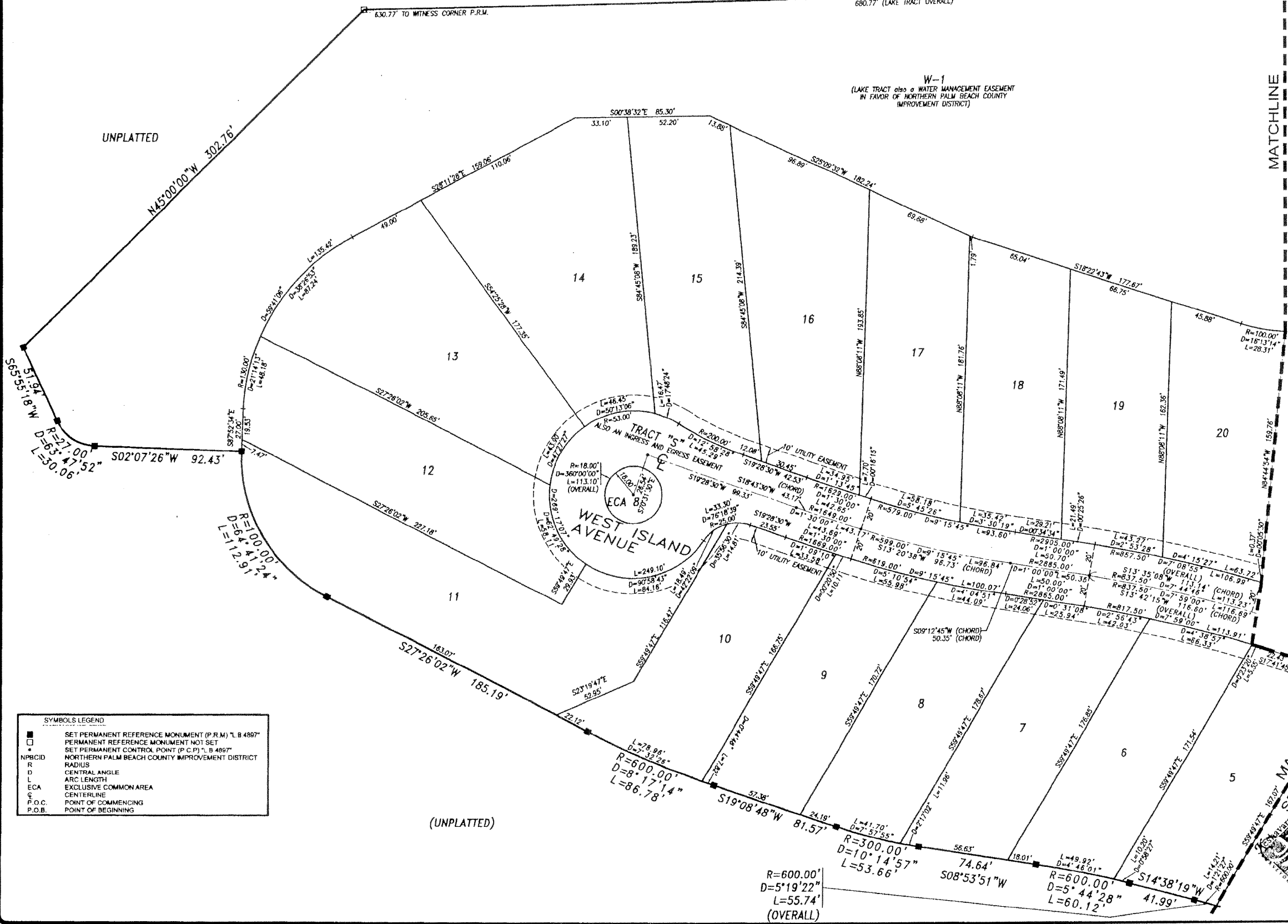
A PARCEL OF LAND LYING WITHIN THE SOUTHWEST QUARTER OF
SECTION 14, TOWNSHIP 42 SOUTH, RANGE 42 EAST, CITY OF PALM BEACH GARDENS
PALM BEACH COUNTY, FLORIDA
SHEET 4 OF 4 APRIL 2001

153

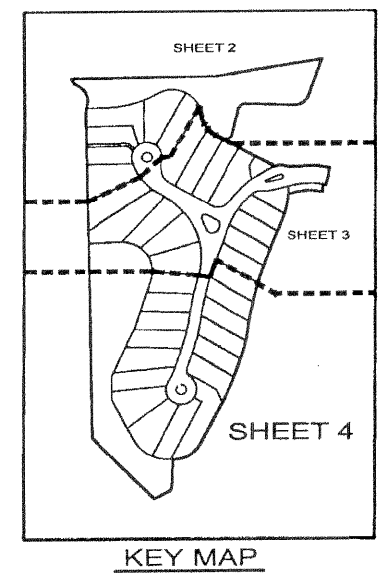
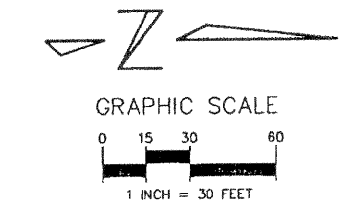
STATE OF FLORIDA
COUNTY OF PALM BEACH
THIS PLAT WAS FILED FOR RECORD
AT _____ THIS _____
DAY OF _____
A.D. 2001, AND DULY RECORDED IN
PLAT BOOK _____ ON PAGES _____
AND _____
DOROTHY WILKEN, CLERK
CIRCUIT COURT.
BY: _____ DC

N01°13'48"W 1136.80' (OVERALL)
680.77' (LAKE TRACT OVERALL)

W-1
(LAKE TRACT also a WATER MANAGEMENT EASEMENT
IN FAVOR OF NORTHERN PALM BEACH COUNTY
IMPROVEMENT DISTRICT)



MATCHLINE
SEE SHEET 3 OF 4



SYMBOLS LEGEND

■	SET PERMANENT REFERENCE MONUMENT (P.P.M.) "L.B. 4897"
□	PERMANENT REFERENCE MONUMENT NOT SET
*	SET PERMANENT CONTROL POINT (P.C.P.) "L.B. 4897"
N.P.B.C.I.D.	NORTHERN PALM BEACH COUNTY IMPROVEMENT DISTRICT
R	RADIUS
D	CENTRAL ANGLE
L	ARC LENGTH
E.C.A.	EXCLUSIVE COMMON AREA
C	CENTERLINE
P.O.C.	POINT OF COMMENCING
P.O.B.	POINT OF BEGINNING

MATCHLINE
SEE SHEET 3 OF 4

Keshavarz & Associates, Inc.
CONSULTING ENGINEERS - SURVEYORS
1280 N. Congress Avenue, Suite 206
West Palm Beach, Florida 33409
Tel: (561) 689-8600 Fax: (561) 689-7476 LB 4897
THIS INSTRUMENT WAS PREPARED BY MANUEL A. GUTIERREZ, P.S.M.
PROFESSIONAL SURVEYOR AND MAPPER NO. 4102
IN THE OFFICES OF KESHAVARZ & ASSOCIATES, INC.