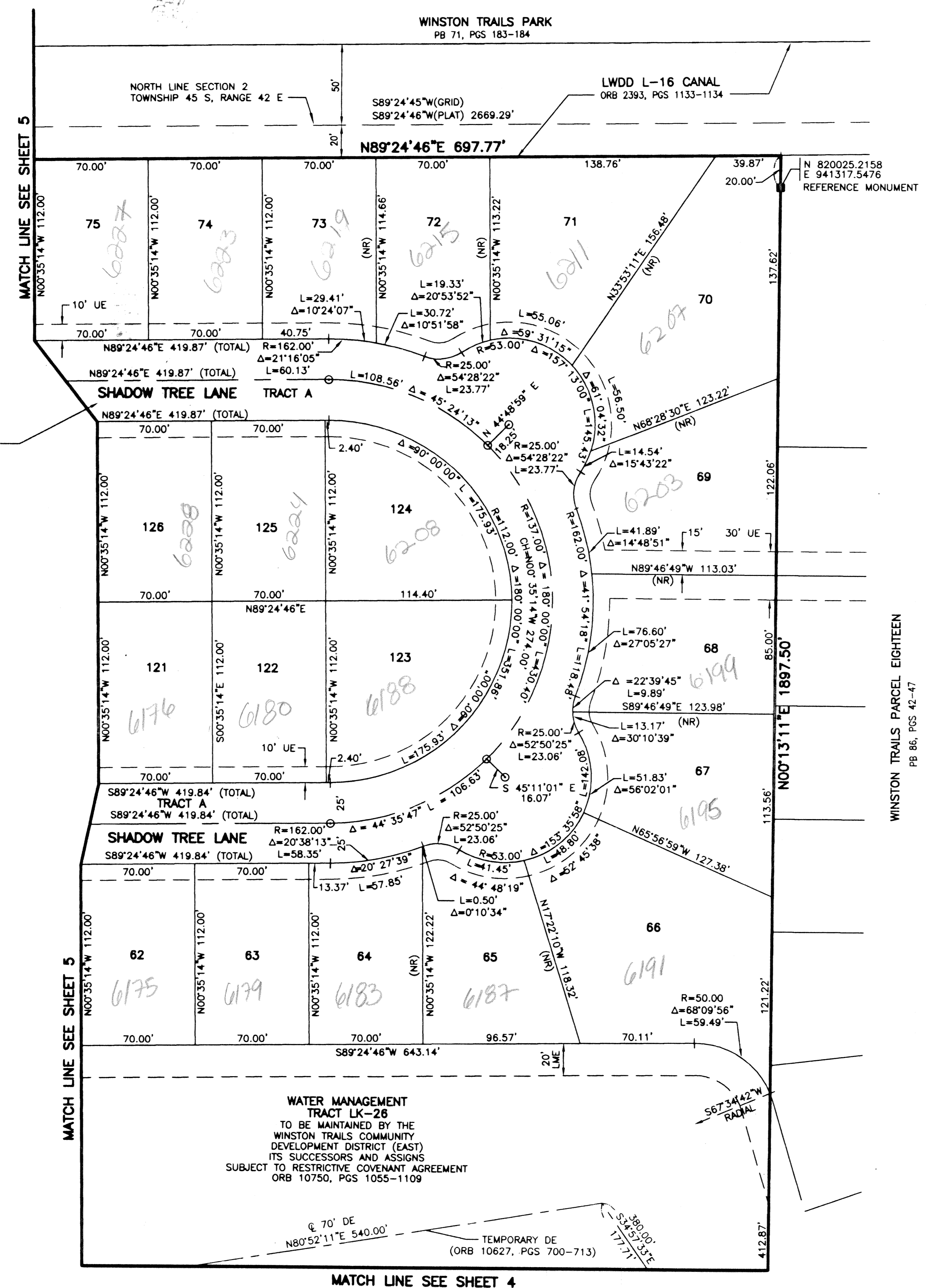
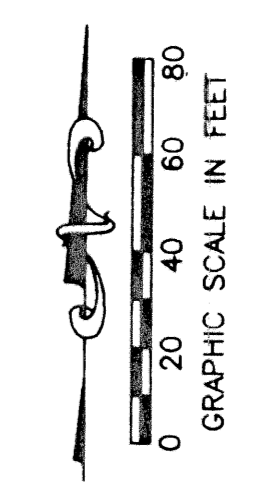


STATE OF FLORIDA
 COUNTY OF PALM BEACH

THIS PLAT WAS FILED FOR
 RECORD _____ DAY OF _____
 AD, 2001 AND DULY RECORDED
 IN PLAT BOOK _____ ON PAGES
 _____ AND _____

DOROTHY H. WILKEN, CLERK
 BY: _____, D.C.

CIRCUIT COURT SEAL

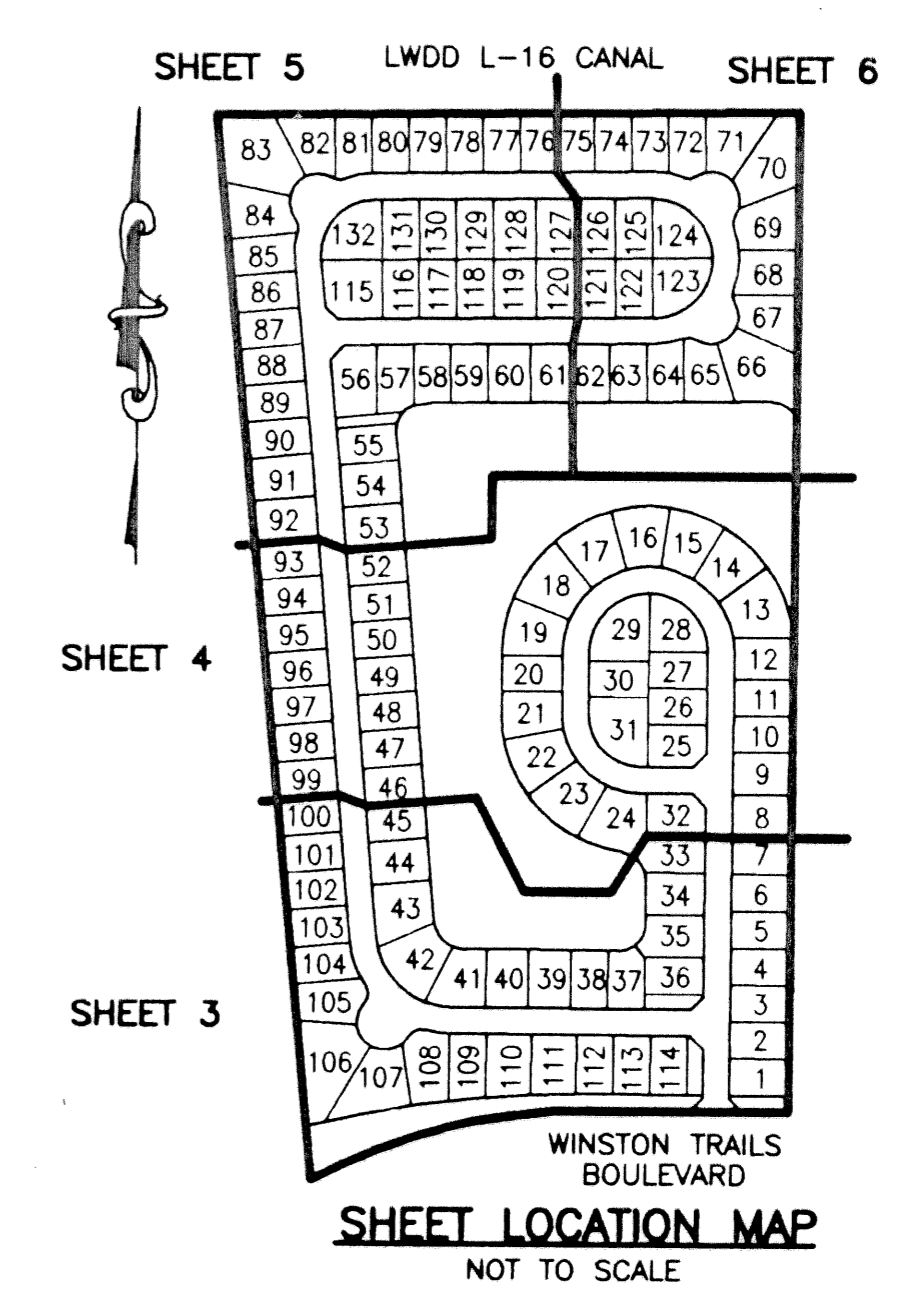


WINSTON TRAILS PARCEL SEVENTEEN

PART OF WINSTON TRAILS P.U.D.
 BEING A REPLAT OF TRACT E,
 WINSTON TRAILS EAST
 PB 85, PGS 74-78

SITUATE IN SECTION 2, TOWNSHIP 45 SOUTH, RANGE 42 EAST
 PALM BEACH COUNTY, FLORIDA
 DECEMBER, 1999 SHEET 6 OF 6

- LEGEND**
- L ARC LENGTH
 - BE BUFFER EASEMENT
 - Δ CENTRAL (DELTA) ANGLE
 - CH CHORD
 - DE DRAINAGE EASEMENT
 - FPL FLORIDA POWER & LIGHT
 - LAE LIMITED ACCESS EASEMENT
 - LME LAKE MAINTENANCE EASEMENT
 - LMAE LAKE MAINTENANCE ACCESS EASEMENT
 - LWDD LAKE WORTH DRAINAGE DISTRICT
 - (NR) NON-RADIAL
 - ORB PLAT BOOK
 - PB PAGE(S)
 - PUD PLANNED UNIT OF DEVELOPMENT
 - R RADIUS
 - RAD RADIAL
 - (TYP) TYPICAL
 - UE UTILITY EASEMENT
 - PERMANENT REFERENCE MONUMENT
 - FOUND LB-048
 - PERMANENT REFERENCE MONUMENT
 - SET LB-048
 - ⊙ PERMANENT CONTROL POINT
 - ⊕ SET LB-048
 - ⊖ CENTERLINE
 - LE LANDSCAPE EASEMENT



THIS INSTRUMENT WAS PREPARED BY MARY HANNA CLODFELTER, P.S.M. IN THE OFFICES OF MOCK, ROOS & ASSOCIATES, INC., 5720 CORPORATE WAY, WEST PALM BEACH, FLORIDA 33407.

SCALE:
 1"=40'

P.A. NO.:
 98008.70

DATE:
 DECEMBER 1999

DRAWING NO.:
 45-42-02-146

MOCK • ROOS
 ENGINEERS • SURVEYORS • PLANNERS

5720 Corporate Way, West Palm Beach, Florida 33407
 (561) 663-3113, fax 478-7248

SHEET 6 OF 6

**WINSTON TRAILS
 PARCEL SEVENTEEN**
 PART OF WINSTON TRAILS P.U.D.
 BEING A REPLAT OF TRACT E,
 WINSTON TRAILS EAST
 PB 85, PGS 74-78

SECTION 2, TOWNSHIP 45 SOUTH, RANGE 42 EAST
 PALM BEACH COUNTY, FLORIDA