

# WINSTON TRAILS PARCEL SEVENTEEN

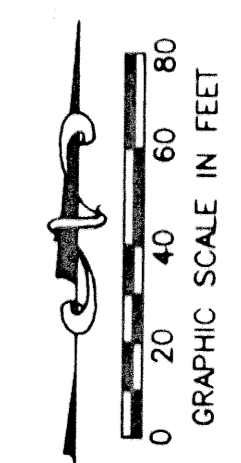
PART OF WINSTON TRAILS P.U.D.  
BEING A REPLAT OF TRACT E,  
WINSTON TRAILS EAST  
PB 85, PGS 74-78  
SITUATE IN SECTION 2, TOWNSHIP 45 SOUTH, RANGE 42 EAST  
PALM BEACH COUNTY, FLORIDA  
DECEMBER, 1999 SHEET 4 OF 6

STATE OF FLORIDA  
COUNTY OF PALM BEACH

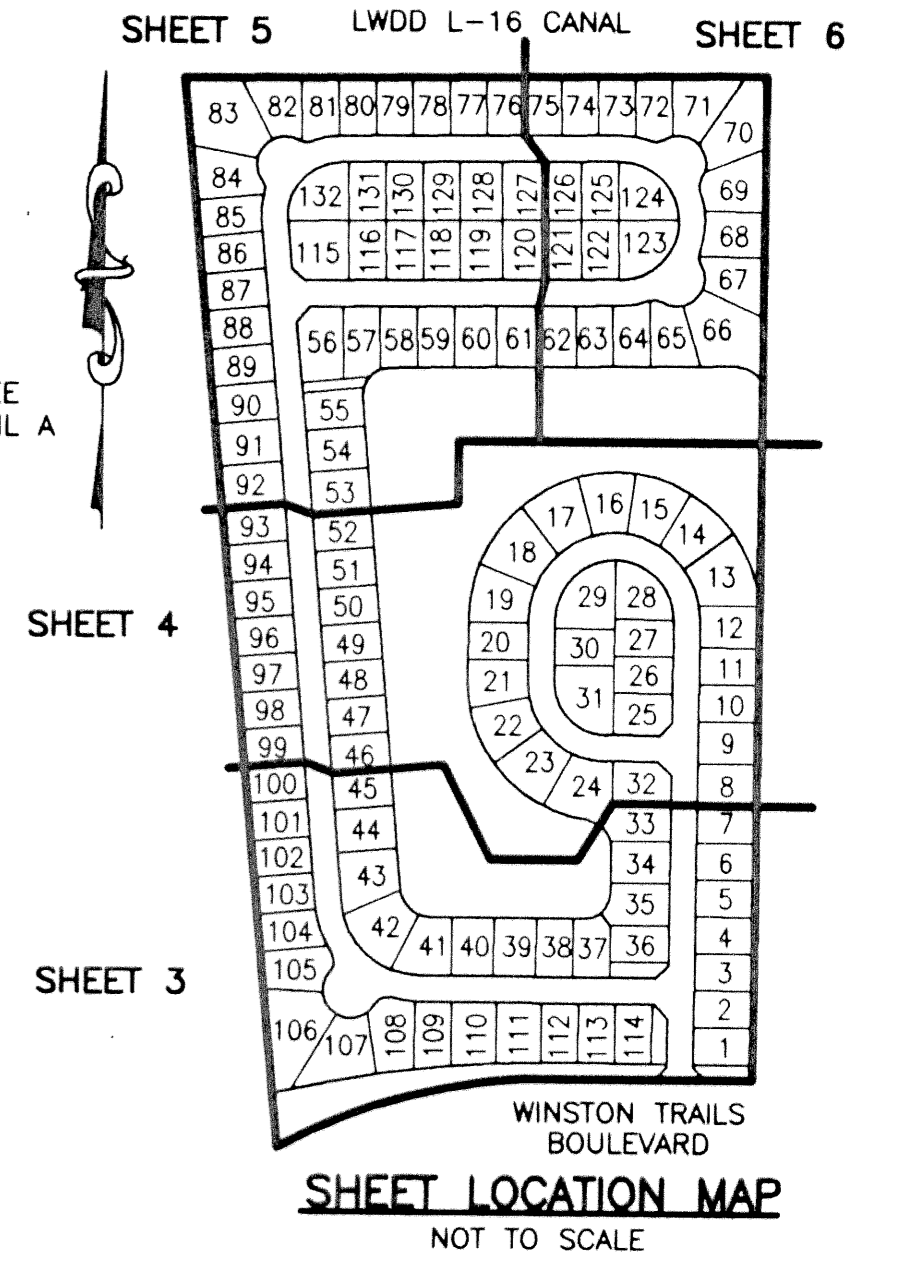
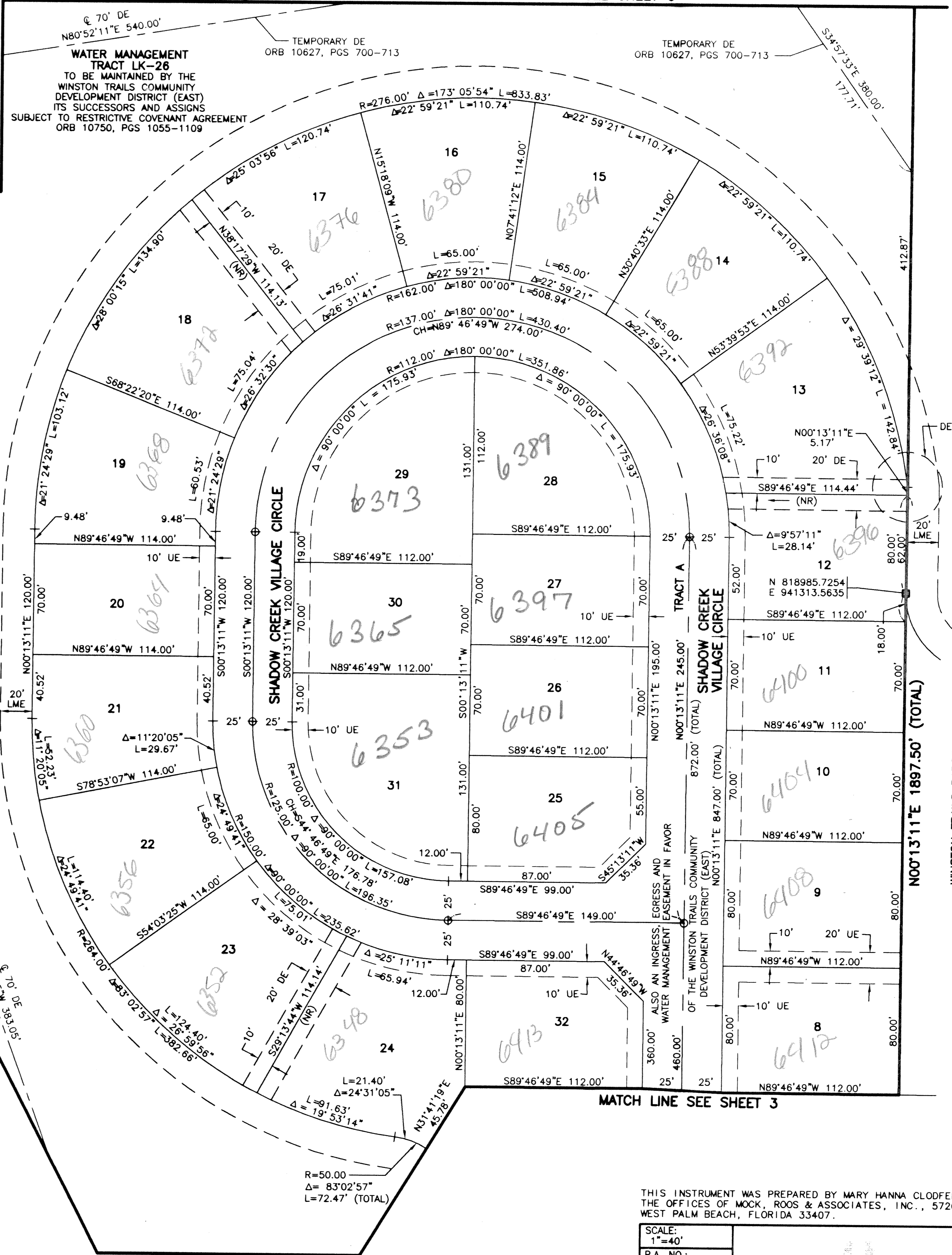
THIS PLAT WAS FILED FOR  
RECORD \_\_\_\_\_ DAY OF \_\_\_\_\_  
AD, 2001 AND DULY RECORDED  
IN PLAT BOOK \_\_\_\_\_ ON PAGES  
\_\_\_\_\_ AND \_\_\_\_\_

DOROTHY H. WILKEN, CLERK  
BY: \_\_\_\_\_, D.C.

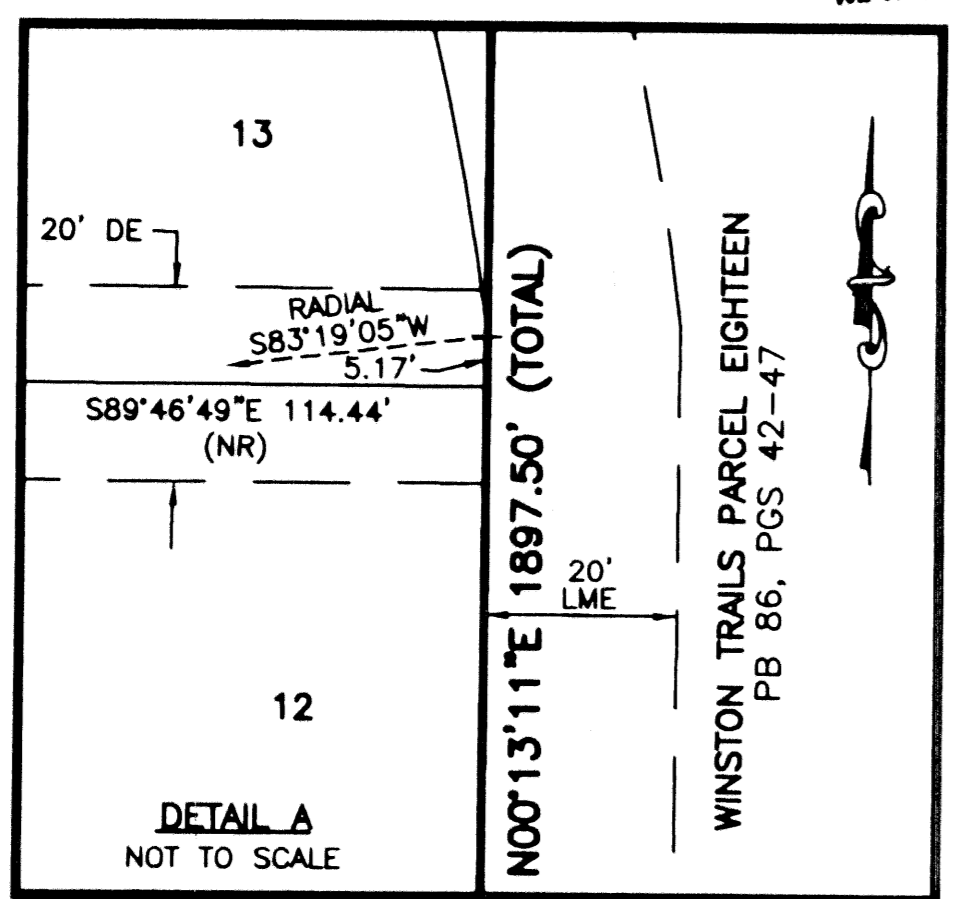
CIRCUIT COURT SEAL



MATCH LINE SEE SHEET 6



- LEGEND
- L ARC LENGTH
  - BE BUFFER EASEMENT
  - CH CENTRAL (DELTA) ANGLE
  - CH CHORD
  - DE DRAINAGE EASEMENT
  - FPL FLORIDA POWER & LIGHT
  - LAE LIMITED ACCESS EASEMENT
  - LME LAKE MAINTENANCE EASEMENT
  - LMAE LAKE MAINTENANCE ACCESS EASEMENT
  - LWDD LAKE WORTH DRAINAGE DISTRICT
  - (NR) NON-RADIAL
  - ORB OFFICIAL RECORD BOOK
  - PB PLAT BOOK
  - PG(S) PAGE(S)
  - PUD PLANNED UNIT OF DEVELOPMENT
  - R RADIUS
  - RAD RADIAL
  - (TYP) TYPICAL
  - UE UTILITY EASEMENT
  - PERMANENT REFERENCE MONUMENT
  - FOUND LB-048 PERMANENT REFERENCE MONUMENT
  - SET LB-048 PERMANENT REFERENCE MONUMENT
  - SET LB-048 PERMANENT CONTROL POINT
  - CENTERLINE



THIS INSTRUMENT WAS PREPARED BY MARY HANNA CLODFELTER, P.S.M., IN THE OFFICES OF MOCK, ROOS & ASSOCIATES, INC., 5720 CORPORATE WAY, WEST PALM BEACH, FLORIDA 33407.

SCALE: 1"=40'

P.A. NO.: 98008.70

DATE: DECEMBER 1999

DRAWING NO.: 45-42-02-146

7520 Corporate Way, West Palm Beach, Florida 33407  
(561) 683-3113, fax 478-7248

WINSTON TRAILS PARCEL SEVENTEEN  
PART OF WINSTON TRAILS P.U.D.  
BEING A REPLAT OF TRACT E,  
WINSTON TRAILS EAST  
PB 85, PGS 74-78  
SECTION 2, TOWNSHIP 45 SOUTH, RANGE 42 EAST  
PALM BEACH COUNTY, FLORIDA

SHEET 4 OF 6

WINSTON TRAILS PARCEL SEVENTEEN  
 DRAWING NO. 45-42-02-146  
 DATE: DECEMBER 1999  
 P.A. NO.: 98008.70  
 SCALE: 1"=40'  
 THIS INSTRUMENT WAS PREPARED BY MARY HANNA CLODFELTER, P.S.M., IN THE OFFICES OF MOCK, ROOS & ASSOCIATES, INC., 5720 CORPORATE WAY, WEST PALM BEACH, FLORIDA 33407.

REV.: 04-26-00  
CAD FILE: MUSSPR17/PR17RP03