

# MIRASOL PARCEL F

PART OF GOLF DIGEST P.C.D.  
SECTION 3, TOWNSHIP 42 SOUTH, RANGE 42 EAST,  
CITY OF PALM BEACH GARDENS,  
PALM BEACH COUNTY, FLORIDA  
SHEET 4 OF 5

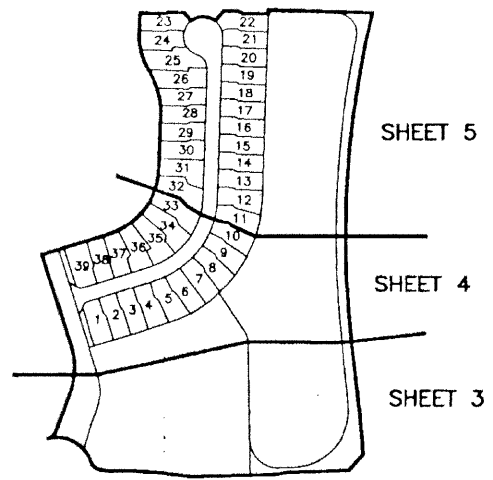
# 100

STATE OF FLORIDA  
COUNTY OF PALM BEACH

THIS PLAT WAS FILED FOR  
RECORD \_\_\_\_\_  
THIS \_\_\_\_\_ DAY OF \_\_\_\_\_  
AD, 2001 AND DULY RECORDED  
IN PLAT BOOK \_\_\_\_\_ ON PAGES  
\_\_\_\_\_ AND \_\_\_\_\_

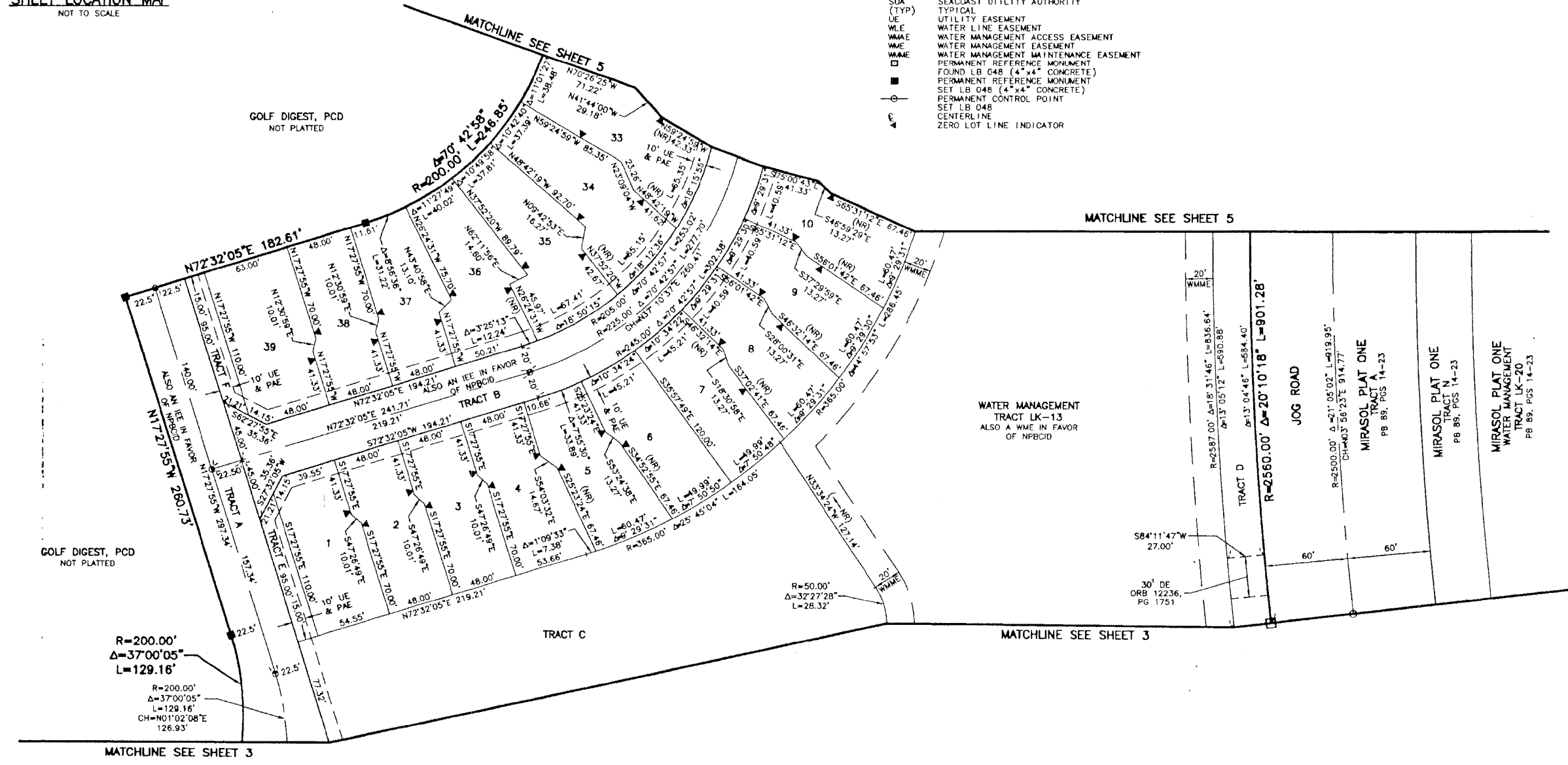
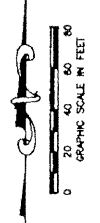
DOROTHY H. WILKEN, CLERK  
By: \_\_\_\_\_, D.C.

CIRCUIT COURT SEAL



SHEET LOCATION MAP  
NOT TO SCALE

- LEGEND**
- Δ CENTRAL (DELTA) ANGLE
  - CH CHORD
  - DE DRAINAGE EASEMENT
  - IEE INGRESS-EGRESS EASEMENT
  - L ARC LENGTH
  - NPBCID NORTHERN PALM BEACH COUNTY IMPROVEMENT DISTRICT
  - (NR) NON-RADIAL
  - ORB OFFICIAL RECORD BOOK
  - P&E PEDESTRIAN ACCESS EASEMENT
  - PB PLAT BOOK
  - PG(S) PAGE(S)
  - PCD PLANNED COMMUNITY DEVELOPMENT
  - PCP PERMANENT CONTROL POINT
  - R RADIUS
  - SUA SEACOAST UTILITY AUTHORITY
  - (TYP) TYPICAL
  - UE UTILITY EASEMENT
  - WLE WATER LINE EASEMENT
  - WMAE WATER MANAGEMENT ACCESS EASEMENT
  - WME WATER MANAGEMENT EASEMENT
  - WMAE WATER MANAGEMENT MAINTENANCE EASEMENT
  - PERMANENT REFERENCE MONUMENT
  - FOUND LB 048 (4"x4" CONCRETE)
  - PERMANENT REFERENCE MONUMENT SET LB 048 (4"x4" CONCRETE)
  - PERMANENT CONTROL POINT SET LB 048
  - ⊖ CENTERLINE
  - ⊕ ZERO LOT LINE INDICATOR



S:\proj\100\100\100\100.dwg 02/27/01 07:51:12 AM EST

REV: 02-27-01  
CAD FILE:  
TAYLPA\_FPA\_FRP03

THIS INSTRUMENT WAS PREPARED BY MARY HANNA CLODFELTER, P.S.M. IN THE OFFICES OF MOCK, ROOS & ASSOCIATES, INC., 5720 CORPORATE WAY, WEST PALM BEACH, FLORIDA 33407.

SCALE:  
1"=40'  
P.A. NO.:  
99321.00  
DATE:  
SEPTEMBER 2000  
DRAWING NO.:  
42-42-03-35

FLORIDA L.B. NO. 48

**MOCK ROOS**  
ENGINEERS & SURVEYORS & PLANNERS

5720 Corporate Way, West Palm Beach, Florida 33407  
(561) 683-3113, fax 478-7248

SHEET 4 OF 5

**MIRASOL PARCEL F**  
PART OF GOLF DIGEST P.C.D.  
SITUATE IN SECTION 3,  
TOWNSHIP 42 SOUTH, RANGE 42 EAST,  
CITY OF PALM BEACH GARDENS,  
PALM BEACH COUNTY, FLORIDA