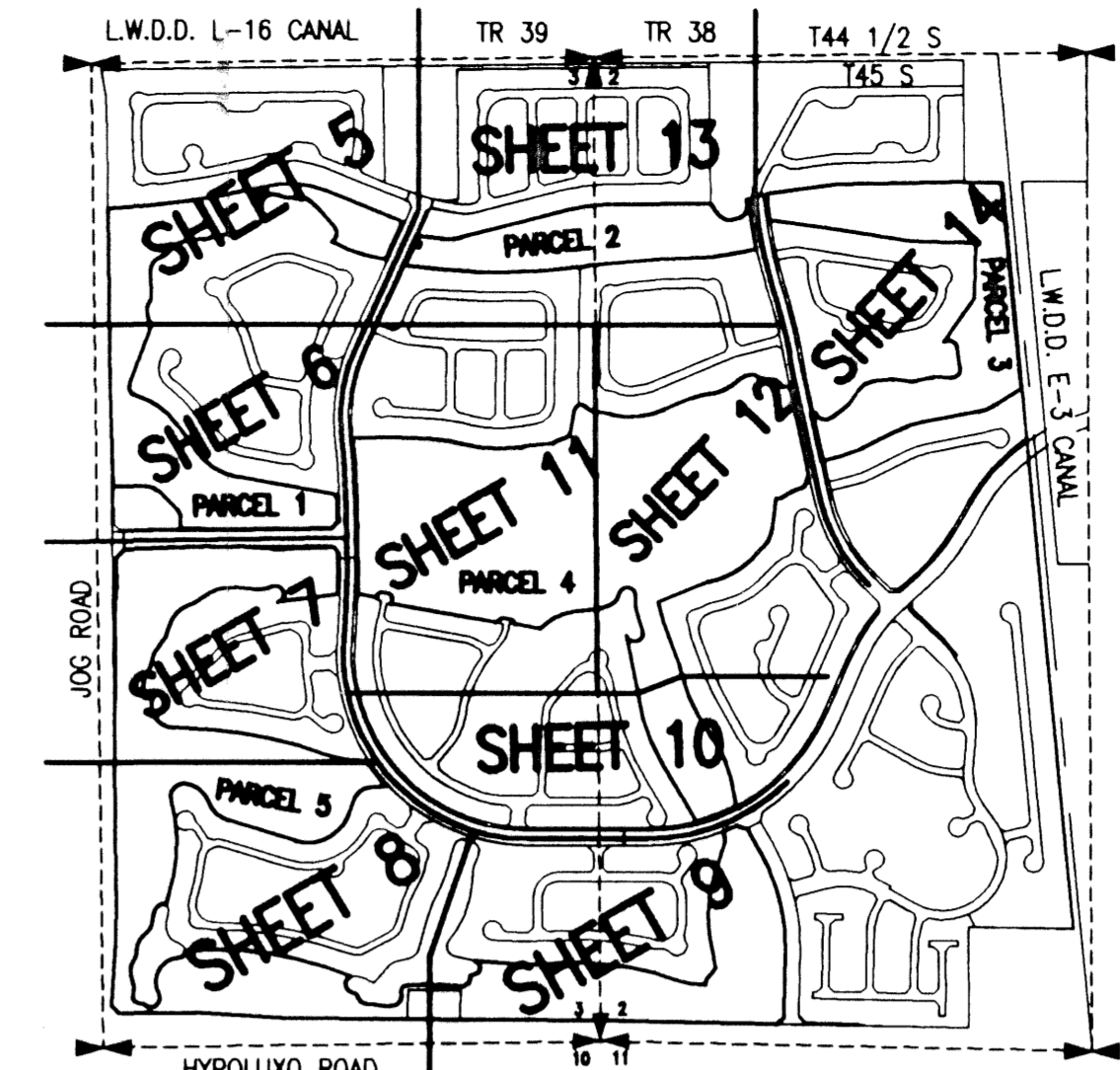


WINSTON TRAILS GOLF COURSE

PART OF WINSTON TRAILS P.U.D.
SITUATE IN SECTIONS 2 AND 3, TOWNSHIP 45 SOUTH, RANGE 42 EAST
PALM BEACH COUNTY, FLORIDA
TOGETHER WITH A REPLAT OF PARCEL 'G',
WINSTON TRAILS PLAT ONE, PLAT BOOK 71, PAGES 28-32
NOVEMBER, 2000 SHEET 7 OF 14



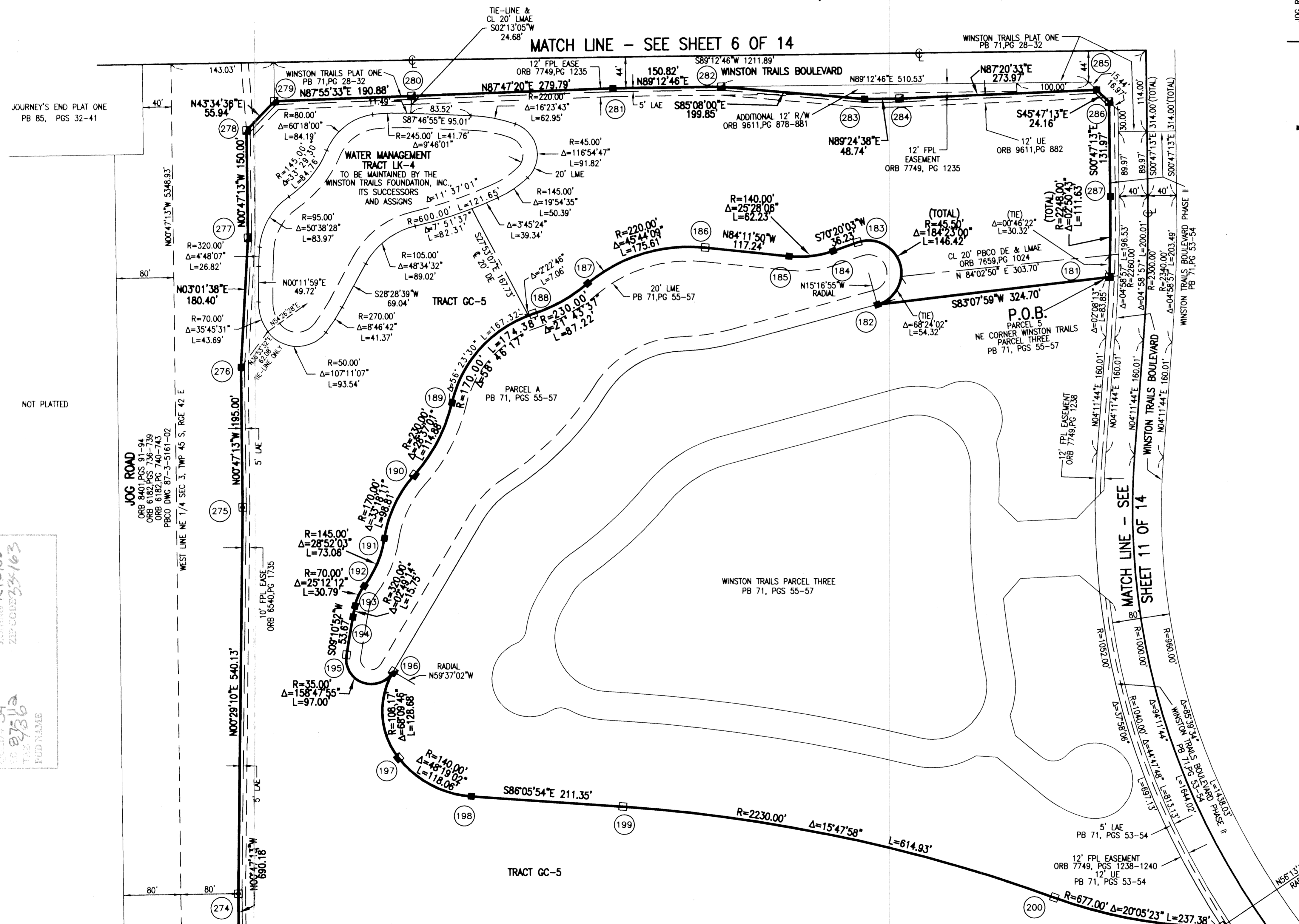
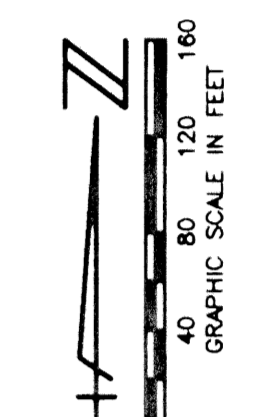
74

STATE OF FLORIDA
COUNTY OF PALM BEACH

THIS PLAT WAS FILED FOR
RECORD _____
THIS _____ DAY OF _____
AD, 2001 AND DULY RECORDED
IN PLAT BOOK _____ ON PAGES
_____ AND _____

DOROTHY H. WILKEN, CLERK
BY: _____, D.C.

CIRCUIT COURT SEAL



| MONUMENT NUMBER | NORTHING | EASTING |
|-----------------|-------------|-------------|
| 201 | 816203.7206 | 936722.3456 |
| 202 | 816068.2532 | 936830.1004 |
| 203 | 816065.0661 | 936739.8740 |
| 204 | 816005.7958 | 936658.4394 |
| 205 | 815919.9327 | 936627.3122 |
| 206 | 815773.6127 | 936333.4326 |
| 207 | 815885.1579 | 935971.6802 |
| 208 | 815987.7317 | 935866.9450 |
| 209 | 816086.4166 | 935732.9223 |
| 210 | 815994.8023 | 935661.6468 |
| 211 | 815484.7185 | 935651.2388 |
| 212 | 815420.5748 | 935635.4284 |
| 213 | 815420.4592 | 935600.0821 |
| 214 | 815352.6247 | 935564.4935 |
| 215 | 815257.3679 | 935519.9428 |
| 216 | 815160.8298 | 935475.4196 |
| 217 | 815120.3041 | 935463.8058 |
| 218 | 815000.7407 | 935456.3638 |
| 219 | 814935.3964 | 935458.9519 |
| 220 | 814880.5871 | 935498.6361 |
| 221 | 814872.9004 | 935520.6767 |
| 222 | 814935.1034 | 935597.4454 |
| 223 | 815130.3128 | 935704.9170 |
| 224 | 815167.8135 | 935740.5090 |
| 225 | 815029.1812 | 936640.3076 |
| 226 | 814943.0759 | 936642.4263 |
| 227 | 814936.1306 | 936667.5541 |
| 228 | 814929.9448 | 936674.2750 |
| 229 | 814909.4107 | 936681.8298 |
| 230 | 814876.6751 | 936728.8737 |
| 231 | 814876.7470 | 936759.1058 |
| 232 | 814870.2904 | 936803.7464 |
| 233 | 814874.9449 | 936888.1133 |
| 234 | 814919.9851 | 936915.4508 |
| 235 | 814948.2148 | 936913.1912 |
| 236 | 814980.5983 | 936942.3164 |
| 237 | 814983.8802 | 937068.6315 |
| 266 | 814792.7564 | 936947.7118 |
| 267 | 814796.4148 | 936297.3240 |
| 268 | 814828.0567 | 935797.8052 |
| 269 | 814827.8408 | 935384.3643 |
| 270 | 814870.1604 | 935343.5483 |
| 271 | 815208.4918 | 935362.7710 |
| 272 | 815461.5590 | 935365.3205 |
| 273 | 815557.1367 | 935364.9784 |

- LEGEND:**
- LWDD LAKE WORTH DRAINAGE DISTRICT
 - BE BUFFER EASEMENT
 - PBCO PALM BEACH COUNTY
 - R/W RIGHT-OF-WAY
 - PB PLAT BOOK
 - PG(S) PAGE(S)
 - SEC SECTION
 - TWP TOWNSHIP
 - RGE RANGE
 - CL @ CENTERLINE
 - FND FOUND
 - R RADIUS
 - Δ CENTRAL ANGLE
 - L ARC LENGTH
 - SB SOUTHERN BELL
 - FPL FLORIDA POWER & LIGHT
 - UE UTILITY EASEMENT
 - DE DRAINAGE EASEMENT
 - EASE EASEMENT
 - ORB OFFICIAL RECORD BOOK
 - LAE LIMITED ACCESS EASEMENT
 - LME LAKE MAINTENANCE EASEMENT
 - LMAE LAKE MAINTENANCE ACCESS EASEMENT
 - (D) DEED
 - (C) CALCULATED
 - PERMANENT REFERENCE MONUMENT (FND.)
 - 4" X 4" CONCRETE #4323
 - PERMANENT REFERENCE MONUMENT (FND.)
 - 4" X 4" CONCRETE #4763
 - PERMANENT REFERENCE MONUMENT (SET)
 - 4" X 4" CONCRETE LB 048
 - ② PERMANENT REFERENCE MONUMENT NUMBER (SEE COORDINATE TABLE FOR VALUE)

REVISION Winston Trails Golf Course
 DATE 01/17/01
 DRAWN BY RT/ISE
 CHECKED BY JTB
 TITLE 9736
 PLOT NAME

REV: 02-14-01
 CAD FILE: MUSSWTGC/WTCRPO4

SCALE:
 1" = 80'
 P.A. NO.:
 97016.03
 DATE:
 NOVEMBER, 2000
 DRAWING NO.
 45-42-02-75

MOCK • ROOS
 ENGINEERS • SURVEYORS • PLANNERS
 5720 Corporate Way, West Palm Beach, Florida 33407
 (561) 683-3113, fax 478-7248

WINSTON TRAILS GOLF COURSE
 PART OF WINSTON TRAILS P.U.D.
 SITUATE IN SECTIONS 2 AND 3, TOWNSHIP 45 SOUTH
 RANGE 42 EAST
 PALM BEACH COUNTY, FLORIDA