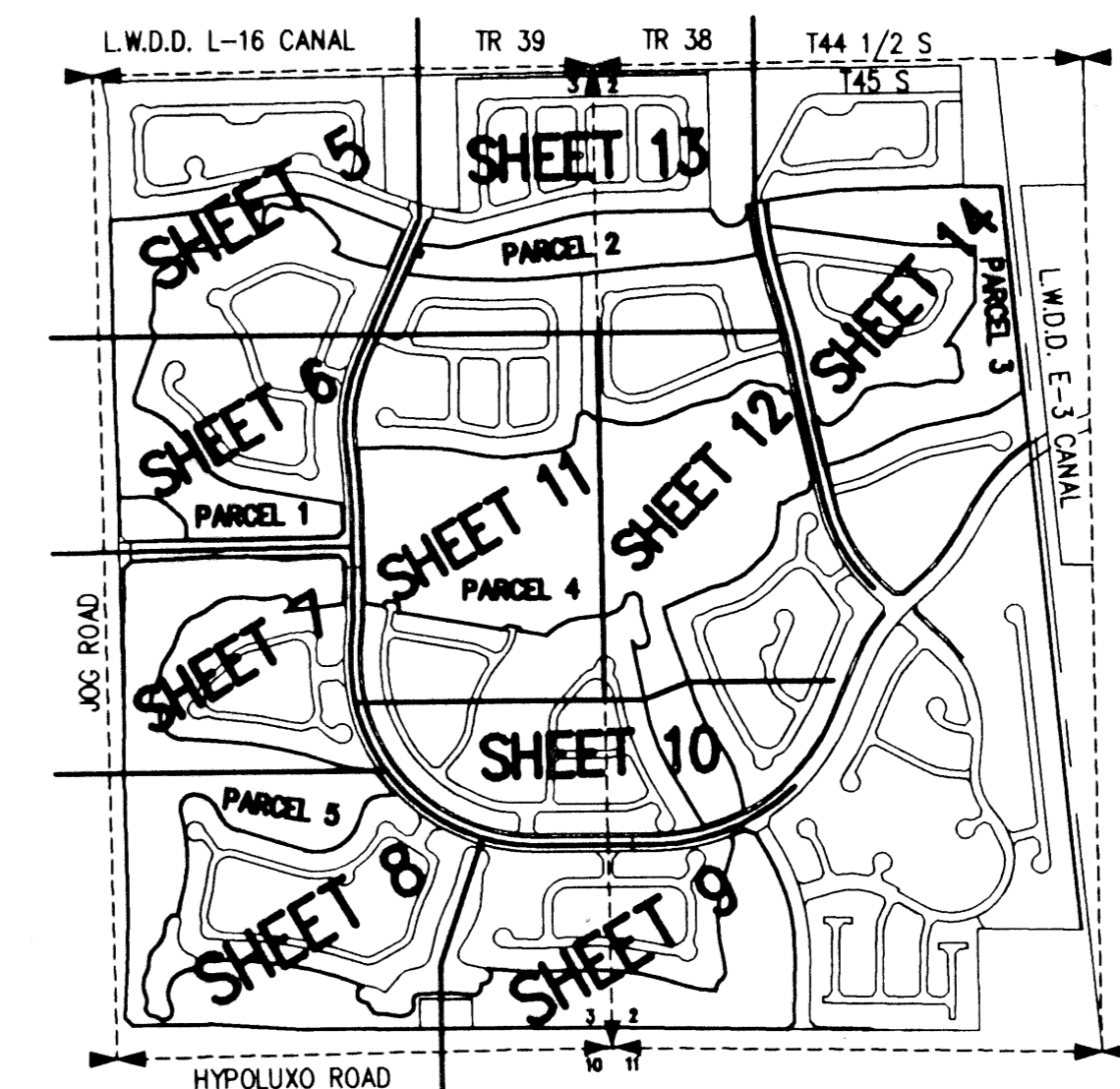
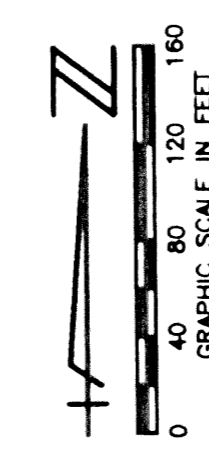


# WINSTON TRAILS GOLF COURSE

PART OF WINSTON TRAILS P.U.D.  
SITUATE IN SECTIONS 2 AND 3, TOWNSHIP 45 SOUTH, RANGE 42 EAST  
PALM BEACH COUNTY, FLORIDA  
TOGETHER WITH A REPLAT OF PARCEL G,  
WINSTON TRAILS PLAT ONE, PLAT BOOK 71, PAGES 28-32  
NOVEMBER, 2000 SHEET 5 OF 14



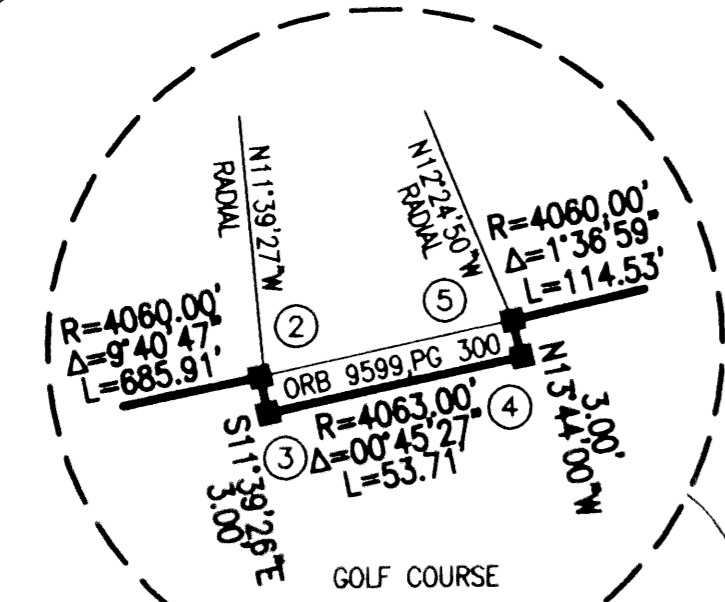
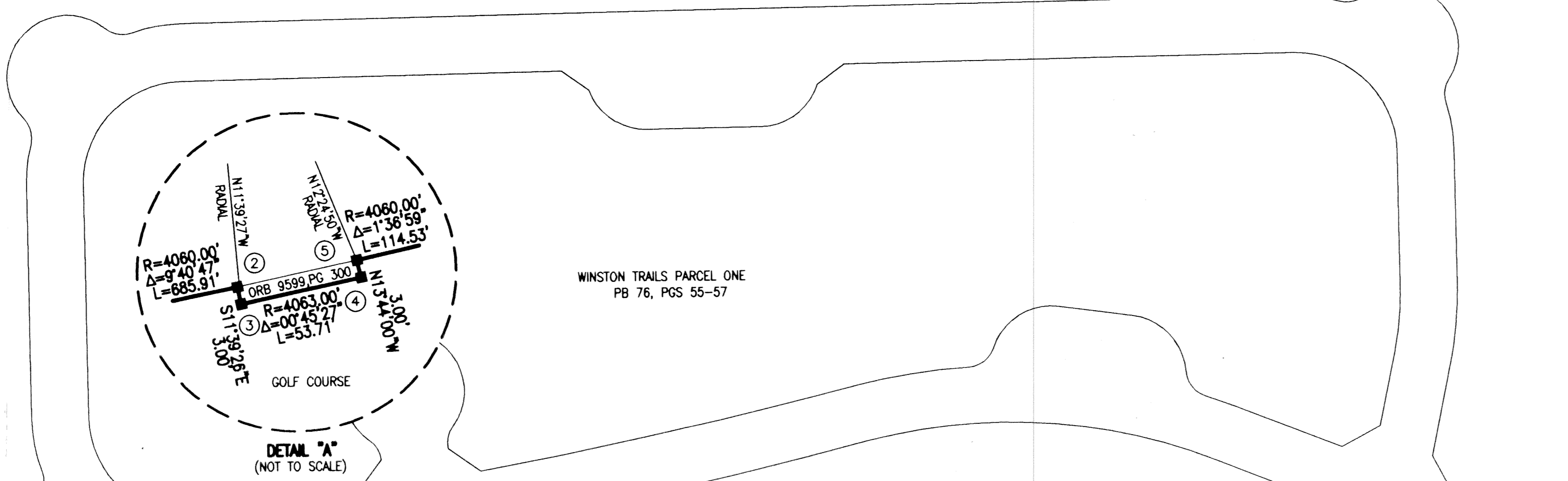
# 72

STATE OF FLORIDA  
COUNTY OF PALM BEACH  
THIS PLAT WAS FILED FOR  
RECORD \_\_\_\_\_ DAY OF \_\_\_\_\_  
AD. 2001 AND DULY RECORDED  
IN PLAT BOOK \_\_\_\_\_ ON PAGES  
\_\_\_\_\_ AND \_\_\_\_\_  
DOROTHY H. WILKEN, CLERK  
BY: \_\_\_\_\_, D.C.

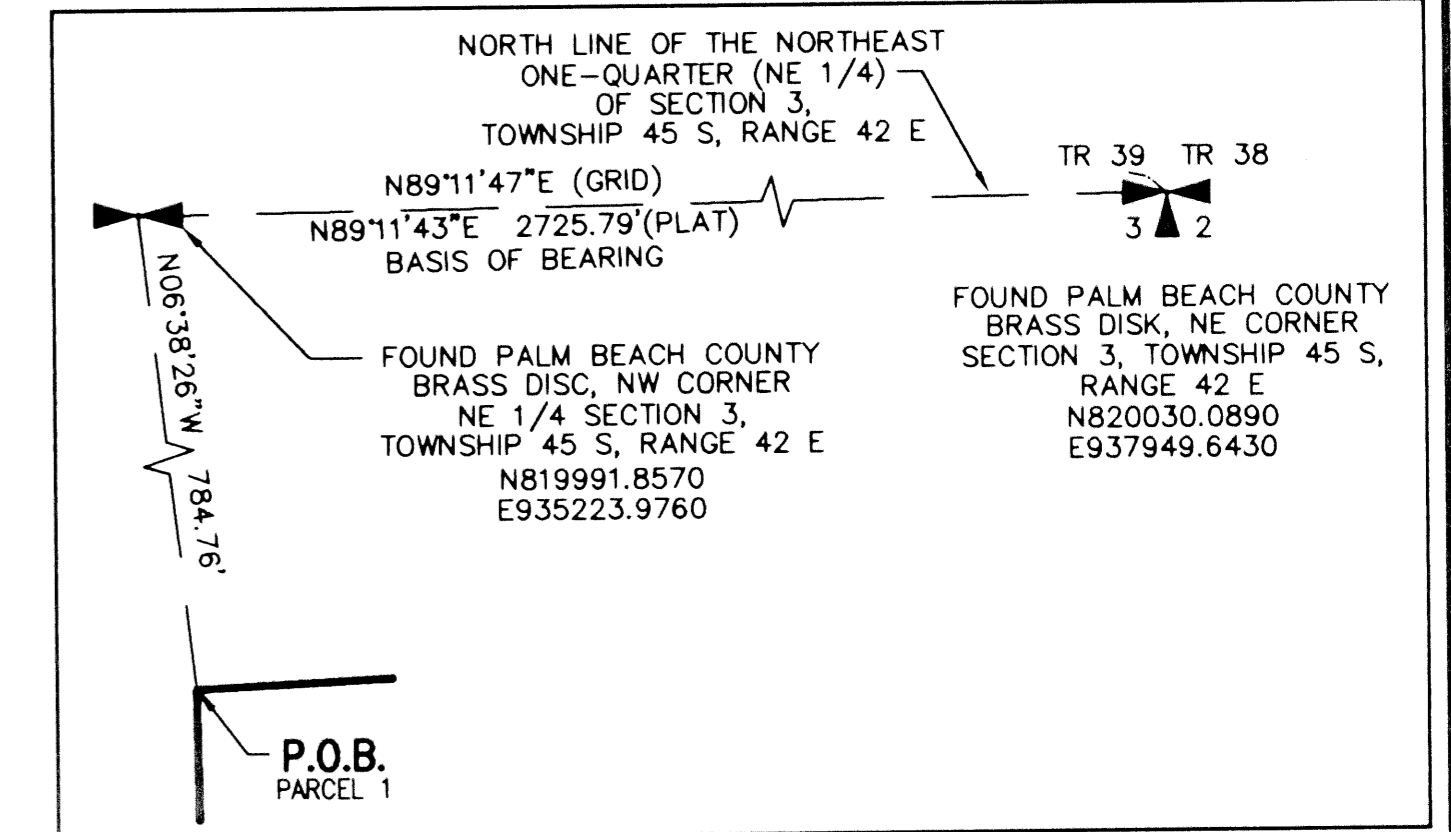
CIRCUIT COURT SEAL

TRACT 38 TRACT 39  
LWDD L-16 CANAL  
NORTH LINE SEC 3, TWP 45 S, RGE 42 E  
ORB 2393, PG 1133  
BASIS OF BEARINGS  
N89°11'43"E 2725.79' (PLAT)  
N89°11'47"E (GRID)

FND NW COR NE 1/4  
SEC 3, TWP 45 S, RGE 42 E  
PALM BEACH COUNTY BRASS DISK  
N 819991.8570  
E 935223.9760



SHEET INDEX MAP  
(NOT TO SCALE)

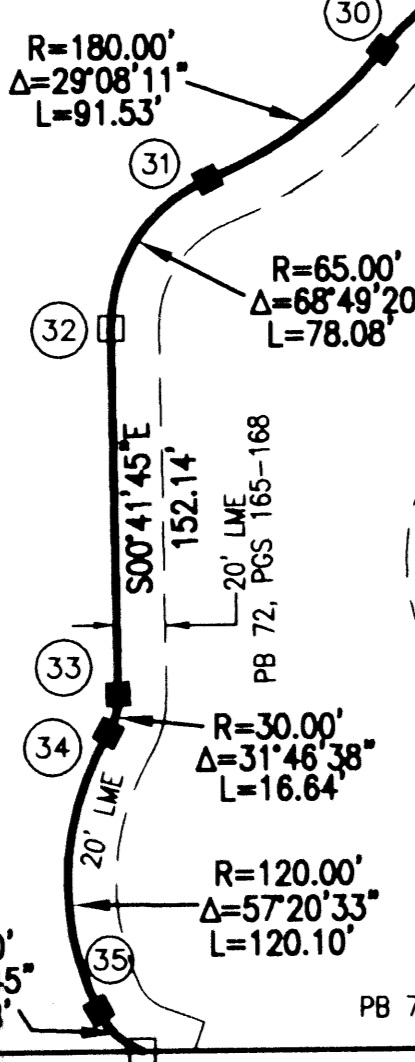
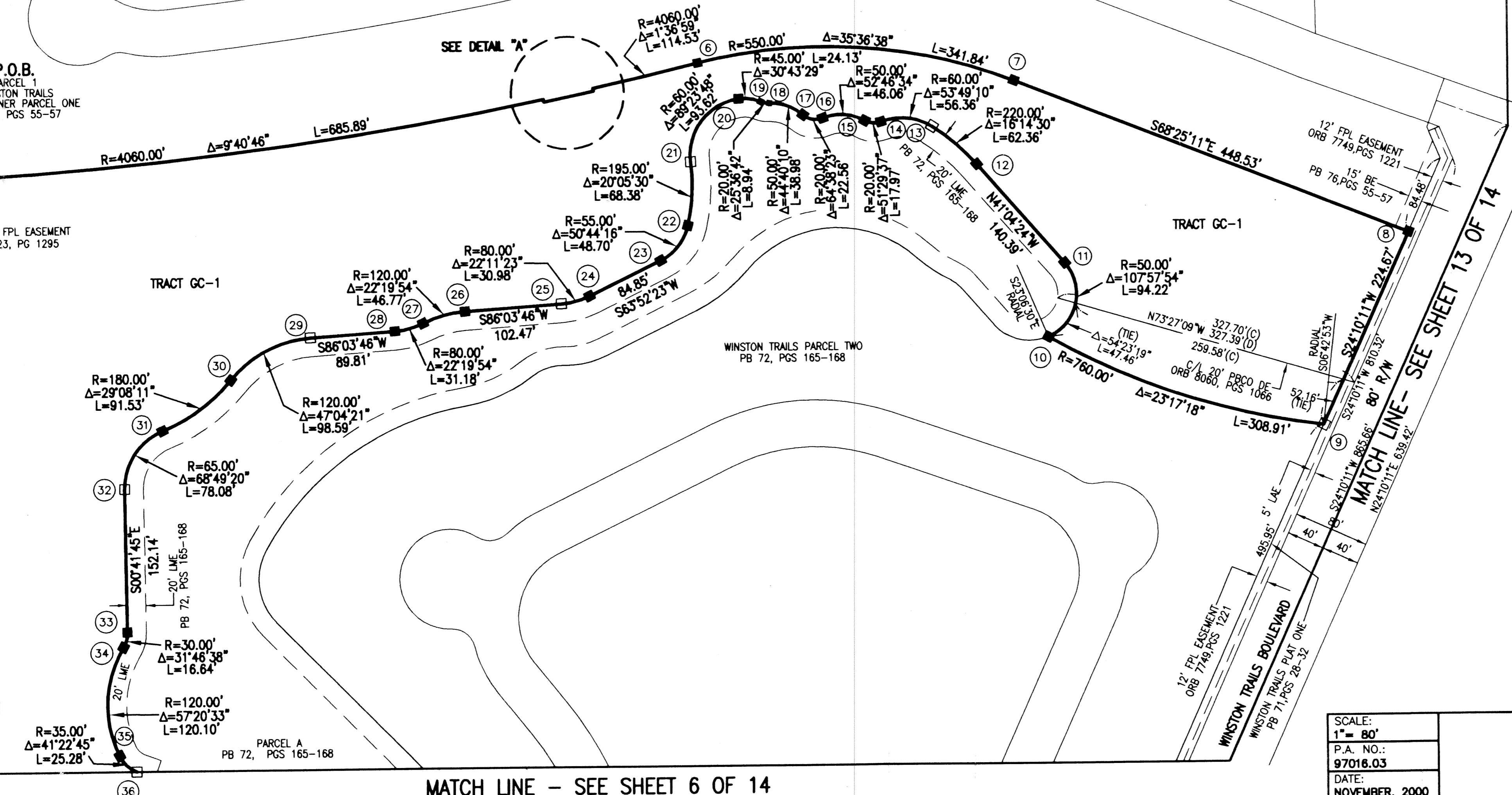


- NOTES:
- THE COORDINATES SHOWN HEREON ARE STATE PLANE GRID COORDINATES ACCORDING TO THE TRANSVERSE MERCATOR PROJECTION OF THE FLORIDA EAST ZONE, N.A.D. 83, PER THE 1990 ADJUSTMENT.
  - THE LINEAR DIMENSIONS SHOWN HEREON ARE GROUND DISTANCES IN U.S. FEET AND DECIMAL PARTS THEREOF.
  - THE GROUND DISTANCE TO GRID DISTANCE SCALE FACTOR IS 1.0000337 (GROUND DISTANCE x SCALE FACTOR = GRID DISTANCE).

WINSTON TRAILS GOLF COURSE  
 PLAT 72  
 RECORDED IN PLAT BOOK 71, PAGES 28-32  
 NOVEMBER 2000  
 BY: [Signature]  
 87-112  
 87-180

MONUMENT NUMBER	NORTHING	EASTING
1	819211.5759	935314.2742
2	819292.9975	935994.4878
3	819290.0585	935995.1044
4	819301.2675	936047.6343
5	819304.1824	936046.9215
6	819330.3940	936158.4114
7	819308.2954	936494.0460
8	819143.3825	936911.1586
9	818938.3981	936819.1996
10	819034.9852	936528.0744
11	819113.8272	936546.0731
12	819219.6500	936453.8189
13	819260.2615	936406.7663
14	819265.7190	936352.7309
15	819267.1138	936335.4112
16	819270.1856	936291.0726
17	819273.8606	936270.0049
18	819286.7831	936234.2679
19	819288.3761	936225.5463
20	819289.1078	936183.9850
21	819224.8572	936150.2681
22	819156.9256	936146.6112
23	819120.0401	936117.2752
24	819082.6648	936041.1004
25	819074.6751	936011.3657
26	819067.6249	935909.1385
27	819055.5090	935864.2697
28	819047.4318	935834.3571
29	819041.2526	935744.7600
30	818997.0261	935659.7356
31	818943.2277	935586.8980
32	818882.1121	935546.1278
33	818729.9836	935547.9967
34	818714.1310	935543.6942
35	818599.0842	935538.8680
36	818582.2045	935556.9432

- LEGEND:
- LWDD LAKE WORTH DRAINAGE DISTRICT
  - BE BUFFER EASEMENT
  - PBCO PALM BEACH COUNTY
  - R/W RIGHT-OF-WAY
  - PLB PLAT BOOK
  - PG(S) PAGE(S)
  - SEC SECTION
  - TWP TOWNSHIP
  - RGE RANGE
  - FND CENTERLINE
  - CL. & CENTERLINE
  - R RADIUS
  - Δ CENTRAL ANGLE
  - L ARC LENGTH
  - SB SOUTHERN BELL
  - FPL FLORIDA POWER & LIGHT
  - UE UTILITY EASEMENT
  - DE DRAINAGE EASEMENT
  - EASE EASEMENT
  - ORB OFFICIAL RECORD BOOK
  - LAE LIMITED ACCESS EASEMENT
  - LME LAKE MAINTENANCE EASEMENT
  - LMAE LAKE MAINTENANCE ACCESS EASEMENT
  - (D) DEED
  - (C) CALCULATED
  - PERMANENT REFERENCE MONUMENT (FND.)
  - 4" x 4" CONCRETE #4323
  - PERMANENT REFERENCE MONUMENT (FND.)
  - 4" x 4" CONCRETE #4763
  - PERMANENT REFERENCE MONUMENT (SET)
  - 4" x 4" CONCRETE LB 048
  - PERMANENT REFERENCE MONUMENT NUMBER (SEE COORDINATE TABLE FOR VALUE)



SCALE:  
1" = 80'  
P.A. NO.:  
97018.03  
DATE:  
NOVEMBER, 2000  
DRAWING NO.  
45-42-02-75

**MOCK • ROOS**  
ENGINEERS • SURVEYORS • PLANNERS  
5720 Corporate Way, West Palm Beach, Florida 33407  
(561) 683-3113, fax 478-7248

**WINSTON TRAILS GOLF COURSE**  
PART OF WINSTON TRAILS P.U.D.  
SITUATE IN SECTIONS 2 AND 3, TOWNSHIP 45 SOUTH  
RANGE 42 EAST  
PALM BEACH COUNTY, FLORIDA

REV: 02-14-01  
CAD FILE:  
MUSSWTGC\WTGCRP02

MATCH LINE - SEE SHEET 6 OF 14

SHEET 5 OF 14