

VALENCIA FALLS - PLAT FIVE

BEING A REPLAT OF A PORTION OF TRACTS 33, 34, 35, 62, 63, 64, 65, 66 AND 67
PALM BEACH FARMS COMPANY PLAT NO. 1 AS RECORDED IN PLAT BOOK 2, PAGES 26 THROUGH 28
OF THE PUBLIC RECORDS OF PALM BEACH COUNTY, FLORIDA. LYING IN
SECTION 9, TOWNSHIP 46 SOUTH, RANGE 42 EAST.

SHEET 1 OF 3 AUGUST, 2000

DEDICATION

KNOW ALL MEN BY THESE PRESENTS THAT G.L. HOMES OF BOYNTON BEACH ASSOCIATES V LTD., A FLORIDA LIMITED PARTNERSHIP, OWNER OF THE LAND SHOWN HEREON, AS VALENCIA FALLS - PLAT FIVE, BEING A PORTION OF TRACTS 33, 34, 35, 62, 63, 64, 65 AND 67, PALM BEACH FARMS COMPANY PLAT NO. 1 ACCORDING TO THE PLAT THEREOF RECORDED IN PLAT BOOK 2, PAGE 26 THROUGH 28 OF THE PUBLIC RECORDS OF PALM BEACH COUNTY, FLORIDA, LYING WITHIN SECTION 9, TOWNSHIP 46 SOUTH, RANGE 42 EAST, PALM BEACH COUNTY, FLORIDA, BEING MORE PARTICULARLY DESCRIBED AS FOLLOWS:

COMMENCE AT THE INTERSECTION OF THE EAST RIGHT-OF-WAY LINE OF HAGEN RANCH ROAD AS DESCRIBED IN OFFICIAL RECORDS BOOK 688, PAGE 283 OF THE PUBLIC RECORDS OF PALM BEACH COUNTY, FLORIDA AND THE SOUTH LINE OF TRACT 89 OF SAID PLAT; THENCE NORTH 89°15'14" EAST, ALONG THE SOUTH LINE OF TRACTS 89, 90, 91, 92, 93, 94, 95, AND 96 OF SAID PLAT, A DISTANCE OF 2,587.69 FEET TO A POINT ON THE EAST LINE OF SAID TRACTS 85 AND 96; THENCE NORTH 00°49'26" WEST, ALONG SAID EAST LINE, A DISTANCE OF 745.63 FEET TO THE POINT OF BEGINNING OF HEREIN DESCRIBED PARCEL OF LAND; THENCE SOUTH 89°10'34" WEST, A DISTANCE OF 67.10 FEET; THENCE NORTH 60°20'55" WEST, A DISTANCE OF 10.06 FEET; THENCE SOUTH 89°10'34" WEST, A DISTANCE OF 78.84 FEET, TO A POINT OF INTERSECTION WITH A NON-TANGENT CURVE, CONCAVE NORTHERLY, HAVING A RADIUS OF 350.00 FEET, THE RADIUS POINT OF SAID CURVE BEARS NORTH 33°46'46" WEST; THENCE WESTERLY, ALONG THE ARC OF SAID CURVE THROUGH A CENTRAL ANGLE OF 25°06'40", A DISTANCE OF 153.40 FEET, TO A POINT OF INTERSECTION WITH A NON-TANGENT LINE; THENCE SOUTH 89°14'29" WEST, A DISTANCE OF 340.94 FEET, TO A POINT OF INTERSECTION WITH A NON-TANGENT CURVE, CONCAVE NORTHERLY, HAVING A RADIUS OF 3,050.00 FEET, THE RADIUS POINT OF SAID CURVE BEARS NORTH 01°18'48", A DISTANCE OF 44.70 FEET, TO A POINT ON A LINE COINCIDENT WITH THE EAST LINE OF VALENCIA FALLS - PLAT ONE, ACCORDING TO THE PLAT THEREOF AS RECORDED IN PLAT BOOK 89, PAGES 28 THROUGH 31 OF THE PUBLIC RECORDS PALM BEACH COUNTY, FLORIDA AND A POINT OF INTERSECTION WITH A LINE RADIAL TO SAID CURVE; THENCE NORTH 02°02'49" EAST, ALONG SAID EAST LINE, A DISTANCE OF 109.29 FEET; THENCE SOUTH 88°12'14" EAST, A DISTANCE OF 112.02 FEET, TO A POINT OF INTERSECTION WITH A NON-TANGENT CURVE, CONCAVE WESTERLY, HAVING A RADIUS OF 1,975.00 FEET, THE RADIUS POINT OF SAID CURVE BEARS NORTH 88°01'35" WEST; THENCE SOUTHERLY, ALONG THE ARC OF SAID CURVE THROUGH A CENTRAL ANGLE OF 00°19'44", A DISTANCE OF 11.34 FEET, TO A POINT OF INTERSECTION WITH A NON-TANGENT LINE; THENCE SOUTH 85°36'56" EAST, A DISTANCE OF 50.03 FEET; THENCE SOUTH 87°19'16" EAST, A DISTANCE OF 53.92 FEET, TO A POINT OF CURVATURE OF A CURVE, CONCAVE NORTHERLY, HAVING A RADIUS OF 2,950.00 FEET; THENCE EASTERLY, ALONG THE ARC OF SAID CURVE THROUGH A CENTRAL ANGLE OF 03°26'15", A DISTANCE OF 176.98 FEET, TO A POINT OF TANGENCY; THENCE NORTH 89°14'29" EAST, A DISTANCE OF 150.29 FEET, TO THE POINT OF CURVATURE OF A CURVE, CONCAVE NORTHWESTERLY, HAVING A RADIUS OF 250.00 FEET; THENCE NORTHWESTERLY, ALONG THE ARC OF SAID CURVE THROUGH A CENTRAL ANGLE OF 09°03'55", A DISTANCE OF 392.98 FEET, TO A POINT OF TANGENCY; THENCE NORTH 00°49'26" WEST, A DISTANCE OF 114.18 FEET, TO THE POINT OF CURVATURE OF A CURVE, CONCAVE WESTERLY, HAVING A RADIUS OF 4,950.00 FEET; THENCE NORTHERLY, ALONG THE ARC OF SAID CURVE THROUGH A CENTRAL ANGLE OF 02°18'52", A DISTANCE OF 199.95 FEET, TO A POINT OF TANGENCY; THENCE NORTH 03°08'17" WEST, A DISTANCE OF 202.17 FEET TO A POINT ON A LINE COINCIDENT WITH SAID PLAT OF VALENCIA FALLS - PLAT ONE; THENCE NORTH 88°43'35" EAST, ALONG THE BOUNDARY OF SAID PLAT THROUGH THE FOLLOWING SEVEN (7) DESCRIBED COURSES, A DISTANCE OF 26.62 FEET, TO A POINT OF INTERSECTION WITH A NON-TANGENT CURVE, CONCAVE EASTERLY, HAVING A RADIUS OF 3,025.00 FEET, THE RADIUS POINT OF SAID CURVE BEARS NORTH 88°43'35" EAST; THENCE NORTHERLY, ALONG THE ARC OF SAID CURVE THROUGH A CENTRAL ANGLE OF 02°20'22", A DISTANCE OF 123.52 FEET, TO A POINT OF INTERSECTION WITH A LINE RADIAL TO SAID CURVE; THENCE NORTH 88°56'02" WEST, A DISTANCE OF 25.00 FEET; THENCE SOUTH 89°10'34" WEST, A DISTANCE OF 427.98 FEET, TO THE POINT OF CURVATURE OF A CURVE, CONCAVE EASTERLY, HAVING A RADIUS OF 241.00 FEET; THENCE NORTHERLY, ALONG THE ARC OF SAID CURVE THROUGH A CENTRAL ANGLE OF 18°00'00", A DISTANCE OF 757.12 FEET; THENCE NORTH 89°10'34" EAST, A DISTANCE OF 434.52 FEET; THENCE NORTH 87°21'42" EAST, A DISTANCE OF 25.00 FEET, TO A POINT OF INTERSECTION WITH A NON-TANGENT CURVE, CONCAVE WESTERLY, HAVING A RADIUS OF 4,975.00 FEET, THE RADIUS POINT OF SAID CURVE BEARS SOUTH 87°21'42" WEST; THENCE SOUTHERLY, ALONG THE ARC OF SAID CURVE THROUGH A CENTRAL ANGLE OF 03°02'45", A DISTANCE OF 264.47 FEET, TO A POINT OF INTERSECTION WITH A NON-TANGENT LINE; THENCE NORTH 89°10'34" EAST, A DISTANCE OF 71.19 FEET TO A POINT ON THE EAST LINE OF SAID TRACTS 64 AND 65; THENCE SOUTH 00°49'26" EAST, ALONG SAID EAST LINE, A DISTANCE OF 1,157.76 FEET TO THE POINT OF BEGINNING.

CONTAINING 504,636 SQUARE FEET, 11.586 ACRES, MORE OR LESS.

HAVE CAUSED THE SAME TO BE SURVEYED AND PLATTED AS SHOWN HEREON AND DO HEREBY DEDICATE AS FOLLOWS:

- TRACT "A", AS SHOWN HEREON, IS HEREBY RESERVED FOR THE VALENCIA FALLS HOMEOWNERS ASSOCIATION, INC., ITS SUCCESSORS AND ASSIGNS, FOR PRIVATE STREET PURPOSES AND OTHER PURPOSES NOT INCONSISTENT WITH THIS RESERVATION AND IS THE PERPETUAL MAINTENANCE OBLIGATION OF SAID ASSOCIATION, ITS SUCCESSORS AND ASSIGNS, WITHOUT RECOURSE TO PALM BEACH COUNTY.
- TRACT "R2", AS SHOWN HEREON, IS HEREBY RESERVED FOR THE VALENCIA FALLS HOMEOWNERS ASSOCIATION, INC., ITS SUCCESSORS AND ASSIGNS, FOR RECREATIONAL PURPOSES AND IS THE PERPETUAL MAINTENANCE OBLIGATION OF SAID ASSOCIATION, ITS SUCCESSORS AND ASSIGNS, WITHOUT RECOURSE TO PALM BEACH COUNTY.
- TRACTS "BT1 THROUGH BT3" AS SHOWN HEREON, ARE HEREBY RESERVED FOR THE VALENCIA FALLS HOMEOWNERS ASSOCIATION, INC., ITS SUCCESSORS AND ASSIGNS, FOR BUFFER AND LANDSCAPE PURPOSES AND ARE THE PERPETUAL MAINTENANCE OBLIGATION OF SAID ASSOCIATION, ITS SUCCESSORS AND ASSIGNS, WITHOUT RECOURSE TO PALM BEACH COUNTY.
- BUFFER EASEMENTS, AS SHOWN HEREON, ARE HEREBY DEDICATED FOR THE VALENCIA FALLS HOMEOWNERS ASSOCIATION, INC., ITS SUCCESSORS AND ASSIGNS, FOR BUFFER PURPOSES AND ARE THE PERPETUAL MAINTENANCE OBLIGATION OF SAID ASSOCIATION WITHOUT RECOURSE TO PALM BEACH COUNTY. THERE SHALL BE NO LANDSCAPING IN THE PORTION OF A BUFFER EASEMENT THAT OVERLAPS ANOTHER EASEMENT EXCEPT IN ACCORDANCE WITH SURVEYOR'S NOTE 2.
- THE DRAINAGE EASEMENTS, AS SHOWN HEREON, ARE HEREBY DEDICATED IN PERPETUITY FOR DRAINAGE PURPOSES. THE MAINTENANCE OF ALL DRAINAGE FACILITIES LOCATED THEREIN SHALL BE THE PERPETUAL MAINTENANCE OBLIGATION OF THE VALENCIA FALLS HOMEOWNERS ASSOCIATION, INC., ITS SUCCESSORS AND ASSIGNS, WITHOUT RECOURSE TO PALM BEACH COUNTY. PALM BEACH COUNTY SHALL HAVE THE RIGHT, BUT NOT THE OBLIGATION, TO MAINTAIN ANY PORTION OF THE DRAINAGE SYSTEM ENCOMPASSED BY THIS PLAT WHICH IS ASSOCIATED WITH THE DRAINAGE OF PUBLIC STREETS, INCLUDING THE RIGHT TO UTILIZE FOR PROPER PURPOSES ANY AND ALL DRAINAGE LAKE MAINTENANCE, AND LAKE MAINTENANCE ACCESS EASEMENTS AND PRIVATE ROADS ASSOCIATED WITH SAID DRAINAGE SYSTEM.
- THE UTILITY EASEMENTS, AS SHOWN HEREON, ARE HEREBY DEDICATED IN PERPETUITY FOR THE CONSTRUCTION AND MAINTENANCE OF UTILITY FACILITIES, INCLUDING CABLE TELEVISION SYSTEMS. THE INSTALLATION OF CABLE TELEVISION SYSTEMS SHALL NOT INTERFERE WITH THE CONSTRUCTION AND MAINTENANCE OF OTHER UTILITIES.

- THE LIMITED ACCESS EASEMENTS, AS SHOWN HEREON, ARE HEREBY DEDICATED TO THE BOARD OF COUNTY COMMISSIONERS OF PALM BEACH COUNTY, FLORIDA, FOR THE PURPOSE OF CONTROL AND JURISDICTION OVER ACCESS RIGHTS.
- OVERHANG EASEMENTS, AS SHOWN HEREON, ARE HEREBY DEDICATED TO THE LOT OWNER WHOSE DWELLING UNIT ABUTS SAID EASEMENT, ITS SUCCESSOR AND ASSIGNS, FOR ROOF OVERHANG, UTILITY SERVICES, BUILDING MAINTENANCE AND DRAINAGE PURPOSES WITHOUT RECOURSE TO PALM BEACH COUNTY.

IN WITNESS WHEREOF, G.L. HOMES OF BOYNTON BEACH ASSOCIATES V, LTD., BY: G.L. HOMES OF BOYNTON BEACH V CORPORATION, ITS GENERAL PARTNER, HAS CAUSED THESE PRESENTS TO BE SIGNED BY ITS VICE PRESIDENT AND ITS CORPORATE SEAL TO BE AFFIXED HERETO BY AND WITH THE AUTHORITY OF ITS BOARD OF DIRECTORS THIS 5TH DAY OF January, 2000.

G.L. HOMES OF BOYNTON BEACH ASSOCIATES V, LTD.
A FLORIDA LIMITED PARTNERSHIP

BY: G.L. HOMES OF BOYNTON BEACH V CORPORATION
ITS GENERAL PARTNER

BY: Richard A. Costello, VP
RICHARD A. COSTELLO, VICE PRESIDENT

WITNESS: [Signature]

PRINT NAME: Richard A. Costello

WITNESS: Kathleen M. Coffman

PRINT NAME: Kathleen M. Coffman

ACKNOWLEDGMENT

STATE OF FLORIDA
COUNTY OF BROWARD

BEFORE ME PERSONALLY APPEARED RICHARD A. COSTELLO, WHO IS PERSONALLY KNOWN TO ME OR HAS PRODUCED AS IDENTIFICATION, AND WHO EXECUTED THE FOREGOING INSTRUMENT AS VICE PRESIDENT OF G.L. HOMES OF BOYNTON BEACH V CORPORATION, THE GENERAL PARTNER OF G.L. HOMES OF BOYNTON BEACH ASSOCIATES V, LTD., AND SEVERALLY ACKNOWLEDGED TO AND BEFORE ME THAT HE EXECUTED SUCH INSTRUMENT AS SUCH OFFICER OF SAID CORPORATION, AND THAT THE SEAL AFFIXED TO THE FOREGOING INSTRUMENT IS THE CORPORATE SEAL OF SAID CORPORATION AND THAT IT WAS AFFIXED TO SAID INSTRUMENT BY DUE AND REGULAR CORPORATE AUTHORITY, AND THAT SAID INSTRUMENT IS THE FREE ACT AND DEED OF SAID CORPORATION.

WITNESS MY HAND AND OFFICIAL SEAL THIS 5TH DAY OF January, 2000.

NOTARY PUBLIC: Kathleen M. Coffman

PRINT NAME: Kathleen M. Coffman

MY COMMISSION EXPIRES: March 18, 2005

ACCEPTANCE OF RESERVATIONS

STATE OF FLORIDA
COUNTY OF BROWARD

VALENCIA FALLS HOMEOWNERS ASSOCIATION, INC., HEREBY ACCEPTS THE DEDICATIONS OR RESERVATIONS TO SAID ASSOCIATION AS STATED AND SHOWN HEREON, AND HEREBY ACCEPTS ITS MAINTENANCE OBLIGATIONS FOR SAME AS STATED HEREON, DATED THIS 5TH DAY OF January, 2000.

VALENCIA FALLS HOMEOWNERS ASSOCIATION, INC.
A FLORIDA CORPORATION NOT FOR PROFIT

BY: Richard A. Costello, VP
RICHARD A. COSTELLO, VICE PRESIDENT

WITNESS: [Signature]

PRINT NAME: Richard A. Costello

WITNESS: Kathleen M. Coffman

PRINT NAME: Kathleen M. Coffman

SITE PLAN DATA VALENCIA FALLS - PLAT FIVE

ZONING PETITION NO. _____ P0089-019
(AKA POLO TRACE PRD, VALENCIA GRAND ISLES)
TOTAL AREA _____ 11,586 AC.
TOTAL DWELLING UNITS _____ 0.00
DENSITY _____ 0.00 UNITS PER AC.

ACKNOWLEDGMENT

STATE OF FLORIDA
COUNTY OF BROWARD

BEFORE ME PERSONALLY APPEARED RICHARD A. COSTELLO, WHO IS PERSONALLY KNOWN TO ME OR HAS PRODUCED AS IDENTIFICATION, AND WHO EXECUTED THE FOREGOING INSTRUMENT AS VICE PRESIDENT OF VALENCIA FALLS HOMEOWNERS ASSOCIATION, INC., AND SEVERALLY ACKNOWLEDGED TO AND BEFORE ME THAT HE EXECUTED SUCH INSTRUMENT AS SUCH OFFICER OF SAID CORPORATION, AND THAT THE SEAL AFFIXED TO THE FOREGOING INSTRUMENT IS THE CORPORATE SEAL OF SAID CORPORATION AND THAT IT WAS AFFIXED TO SAID INSTRUMENT BY DUE AND REGULAR CORPORATE AUTHORITY, AND THAT SAID INSTRUMENT IS THE FREE ACT AND DEED OF SAID CORPORATION.

WITNESS MY HAND AND OFFICIAL SEAL THIS 5TH DAY OF January, 2000.

NOTARY PUBLIC: Kathleen M. Coffman

PRINT NAME: Kathleen M. Coffman

MY COMMISSION EXPIRES: March 18, 2005

MORTGAGEE'S CONSENT

STATE OF FLORIDA
COUNTY OF PALM BEACH

THE UNDERSIGNED HEREBY CERTIFIES THAT IT IS THE HOLDER OF A MORTGAGE UPON THE PROPERTY DESCRIBED HEREON AND DOES HEREBY JOIN IN AND CONSENT TO THE DEDICATION OF THE LAND DESCRIBED IN SAID DEDICATION BY THE OWNER THEREOF AND AGREES THAT ITS MORTGAGE, WHICH IS RECORDED IN OFFICIAL RECORD BOOK 1884, AT PAGE 1784 OF THE PUBLIC RECORDS OF PALM BEACH COUNTY, FLORIDA, SHALL BE SUBORDINATED TO THE DEDICATION SHOWN HEREON.

IN WITNESS WHEREOF, SAID CORPORATION HAS CAUSED THESE PRESENTS TO BE SIGNED BY ITS VICE PRESIDENT AND ITS CORPORATE SEAL TO BE AFFIXED HERETO BY AND WITH THE AUTHORITY OF ITS BOARD OF DIRECTORS THIS 12TH DAY OF January, 2000.

BANK OF AMERICA, N.A.,
A NATIONAL BANKING ASSOCIATION

BY: Richard J. Sage, VP
RICHARD J. SAGE, VICE PRESIDENT

WITNESS: [Signature]

PRINT NAME: Richard J. Sage

WITNESS: Cathy C. Passerico

PRINT NAME: Cathy C. Passerico

ACKNOWLEDGMENT

STATE OF FLORIDA
COUNTY OF PALM BEACH

BEFORE ME PERSONALLY APPEARED RICHARD J. SAGE, WHO IS PERSONALLY KNOWN TO ME OR HAS PRODUCED AS IDENTIFICATION, AND WHO EXECUTED THE FOREGOING INSTRUMENT AS VICE PRESIDENT OF BANK OF AMERICA, N.A., AND SEVERALLY ACKNOWLEDGED TO AND BEFORE ME THAT HE EXECUTED SUCH INSTRUMENT AS SUCH OFFICER OF SAID CORPORATION, AND THAT THE SEAL AFFIXED TO THE FOREGOING INSTRUMENT IS THE CORPORATE SEAL OF SAID CORPORATION AND THAT IT WAS AFFIXED TO SAID INSTRUMENT BY DUE AND REGULAR CORPORATE AUTHORITY, AND THAT SAID INSTRUMENT IS THE FREE ACT AND DEED OF SAID CORPORATION.

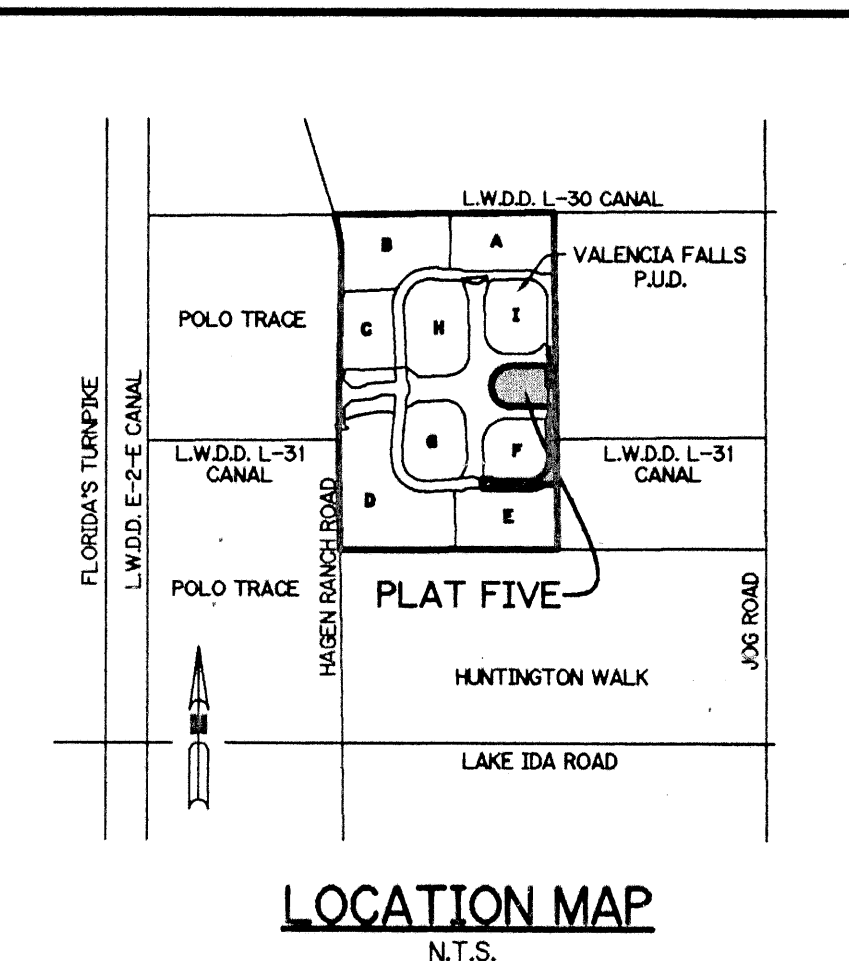
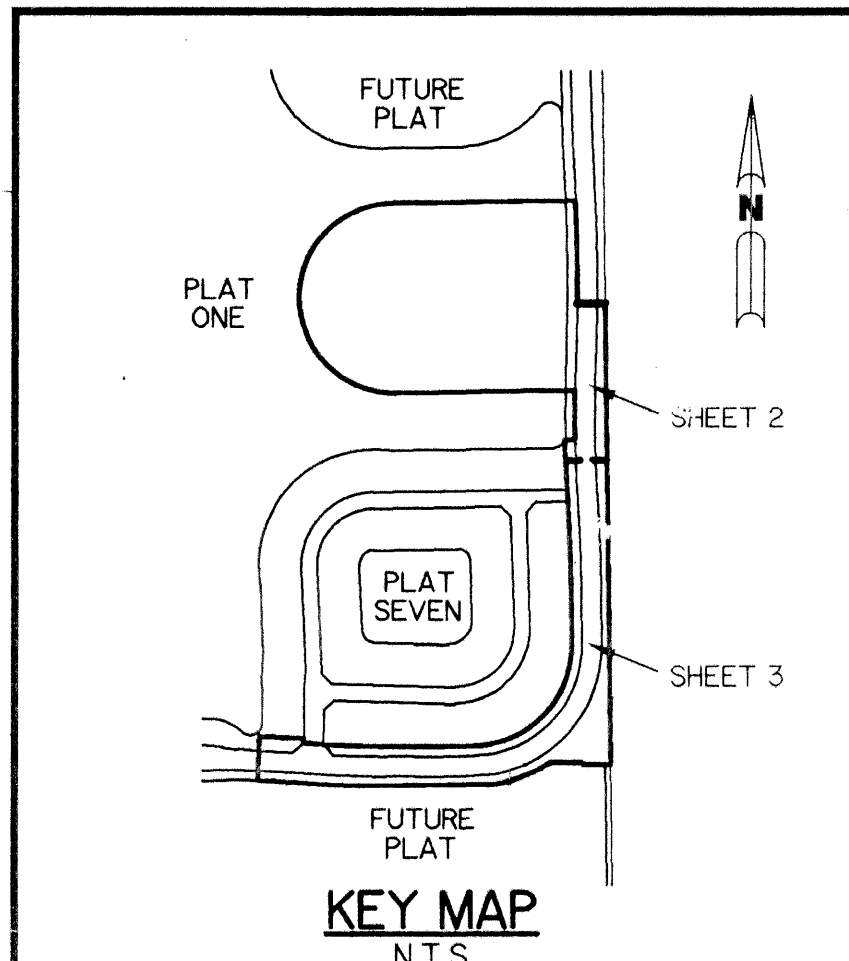
WITNESS MY HAND AND OFFICIAL SEAL THIS 12TH DAY OF January, 2000.

NOTARY PUBLIC: [Signature]

PRINT NAME: Pilma Crusio

MY COMMISSION EXPIRES: June 22, 2001

CC# 771914



THIS INSTRUMENT PREPARED BY
PERRY C. WHITE, P.S.M. 4213, STATE OF FLORIDA
LAWSON, NOBLE AND WEBB, INC.
ENGINEERS PLANNERS SURVEYORS
420 COLUMBIA DRIVE
WEST PALM BEACH, FLORIDA 33409
LB-6674



30

COUNTY OF PALM BEACH)
STATE OF FLORIDA)
This Plat was filed for record at)
This 21 day of March, 2001)
and duly recorded in Plat Book No.)
on page 90-32)
DOROTHY H. WILKEN, Clerk of Court)
by [Signature]) D.C.

TITLE CERTIFICATION

STATE OF FLORIDA
COUNTY OF PALM BEACH

COMMONWEALTH LAND TITLE INSURANCE COMPANY, A TITLE INSURANCE COMPANY AS DULY LICENSED IN THE STATE OF FLORIDA, DO HEREBY CERTIFY THAT WE HAVE EXAMINED THE TITLE TO THE HEREON DESCRIBED PROPERTY; THAT WE FIND THE TITLE TO THE PROPERTY IS VESTED IN G.L. HOMES OF BOYNTON BEACH ASSOCIATES V, LTD., A FLORIDA LIMITED PARTNERSHIP; THAT THE CURRENT TAXES HAVE BEEN PAID; THAT ALL MORTGAGES NOT SATISFIED OR RELEASED OF RECORD NOR OTHERWISE TERMINATED BY LAW ARE SHOWN HEREON; AND THAT THERE ARE ENCUMBRANCES OF RECORD BUT THOSE ENCUMBRANCES DO NOT PROHIBIT THE CREATION OF THE SUBDIVISION DEPICTED BY THIS PLAT.

COMMONWEALTH LAND TITLE INSURANCE COMPANY

BY: Kathleen M. Coffman
KATHLEEN M. JANNEN, ASSISTANT VICE PRESIDENT

DATE: 10/31/00 12/14/2000 Kathleen M. Coffman 1/31/01 Kathleen M. Coffman

SURVEYOR'S CERTIFICATE

THIS IS TO CERTIFY THAT THE PLAT SHOWN HEREON IS A TRUE AND CORRECT REPRESENTATION OF A SURVEY MADE UNDER MY RESPONSIBLE DIRECTION AND SUPERVISION; THAT SAID SURVEY IS ACCURATE TO THE BEST OF MY KNOWLEDGE AND BELIEF; THAT PERMANENT REFERENCE MONUMENTS ("P.R.M.'S") HAVE BEEN PLACED AS REQUIRED BY LAW AND THAT PERMANENT CONTROL POINTS ("C.P.'S") AND MONUMENTS ACCORDING TO SEC. 177.091 (9) F.S., WILL BE SET UNDER THE GUARANTEES POSTED WITH THE PALM BEACH COUNTY BOARD OF COUNTY COMMISSIONERS FOR THE REQUIRED IMPROVEMENTS; AND, FURTHER, THAT THE SURVEY DATA COMPLIES WITH ALL THE REQUIREMENTS OF CHAPTER 177, FLORIDA STATUTES, AS AMENDED, AND THE ORDINANCES OF PALM BEACH COUNTY, FLORIDA.

BY: Perry C. White
PERRY C. WHITE, PROFESSIONAL SURVEYOR AND MAPPER
LICENSE NO. 4213, STATE OF FLORIDA

DATE: 1-19-01

COUNTY ENGINEER

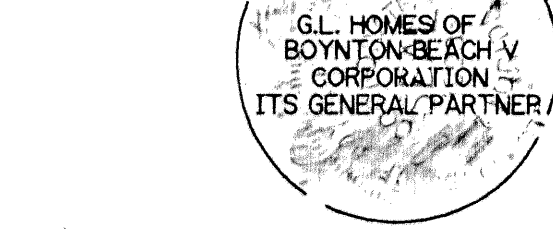
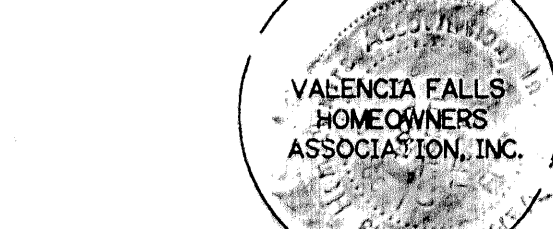
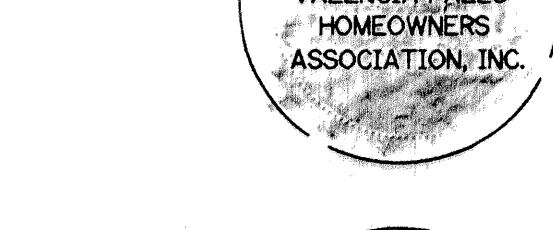
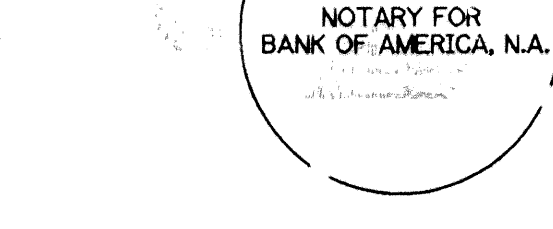
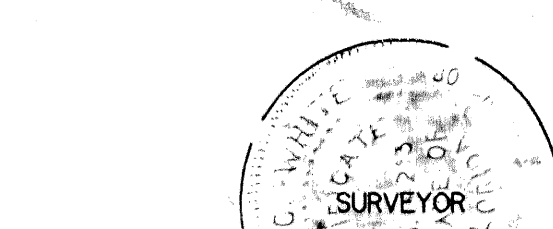
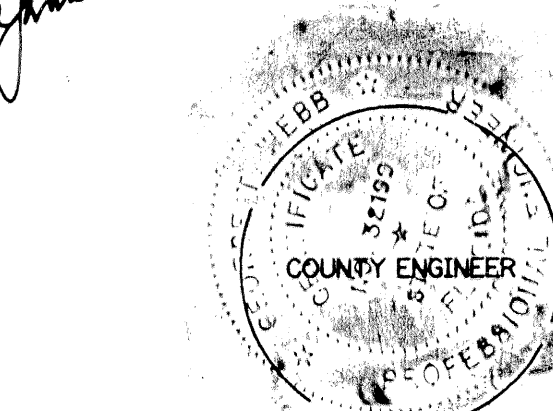
THIS PLAT IS HEREBY APPROVED FOR RECORD PURSUANT TO PALM BEACH COUNTY ORDINANCE 95-33, AND IN ACCORDANCE WITH SECTION 177.071(2), FLORIDA STATUTES, THIS 21ST DAY OF March, 2001, AND HAS BEEN REVIEWED BY A PROFESSIONAL SURVEYOR & MAPPER EMPLOYED BY PALM BEACH COUNTY IN ACCORDANCE WITH SECTION 177.081 (1) FLORIDA STATUTES.

BY: George Webb, P.E.
GEORGE WEBB, P.E.
COUNTY ENGINEER

DATE: 3-21-01

SURVEYOR'S NOTES

- BEARINGS SHOWN HEREON ARE BASED ON THE STATE PLANE COORDINATE SYSTEM OF NAD83 (1990 ADJUSTMENT). THE EAST RIGHT-OF-WAY OF HAGEN RANCH ROAD, HAVING A BEARING OF NORTH 00°54'39" EAST.
- NO BUILDING OR ANY KIND OF CONSTRUCTION OR TREES OR SHRUBS SHALL BE PLACED ON ANY EASEMENT WITHOUT PRIOR WRITTEN CONSENT OF ALL EASEMENT BENEFICIARIES AND ALL APPLICABLE COUNTY APPROVALS OR PERMITS AS REQUIRED FOR SUCH ENCROACHMENTS.
- ALL LINES INTERSECTING CIRCULAR CURVES ARE RADIAL UNLESS OTHERWISE NOTED AS FOLLOWS:
(N.R.) = NON-RADIAL
(R.F.) = RADIAL TO FRONT LOT LINE
(R.R.) = RADIAL TO REAR LOT LINE
- NOTICE: THIS PLAT, AS RECORDED IN ITS GRAPHIC FORM, IS THE OFFICIAL DEPICTION OF THE SUBDIVIDED LANDS DESCRIBED HEREIN AND WILL IN NO CIRCUMSTANCES BE SUPPLANTED IN AUTHORITY BY ANY OTHER GRAPHIC OR DIGITAL FORM OF THE PLAT. THERE MAY BE ADDITIONAL RESTRICTIONS THAT ARE NOT RECORDED ON THIS PLAT THAT MAY BE FOUND IN THE PUBLIC RECORDS OF PALM BEACH COUNTY.
- IN THOSE CASES WHERE EASEMENTS OF DIFFERENT TYPES CROSS OR OTHERWISE COINCIDE, DRAINAGE EASEMENTS SHALL HAVE FIRST PRIORITY, UTILITY EASEMENTS SHALL HAVE SECOND PRIORITY, ACCESS EASEMENTS SHALL HAVE THIRD PRIORITY, AND ALL OTHER EASEMENTS SHALL BE SUBORDINATE TO THESE WITH THEIR PRIORITIES BEING DETERMINED BY USE RIGHTS GRANTED. THERE WILL BE NO ABOVE GROUND ENCROACHMENTS WHERE LAKE MAINTENANCE EASEMENTS AND UTILITY EASEMENTS OVERLAP.
- COORDINATES SHOWN ARE GRID COORDINATES
DATUM = NAD 83 (1990 ADJUSTMENT)
ZONE = FLORIDA EAST ZONE
LINEAR UNIT = U.S. SURVEY FEET
COORDINATE SYSTEM = 1983 STATE PLANE TRANSVERSE MERCATOR PROJECTION
ALL DISTANCES ARE GROUND
SCALE FACTOR = 1.0000278
PLAT BEARING = GRID BEARING
NO ROTATION



RECORDATION Valencia Falls - Plat 5
BOOK 90 PAGE 30
FILED ZONE B FLOOD MAP # 200A
ZONING PUD
QUAD # 51
SE
TAZ 015
PUD NAME POLO TRACE
ZIP CODE 33446