

# POLO TRACE II GOLF COURSE

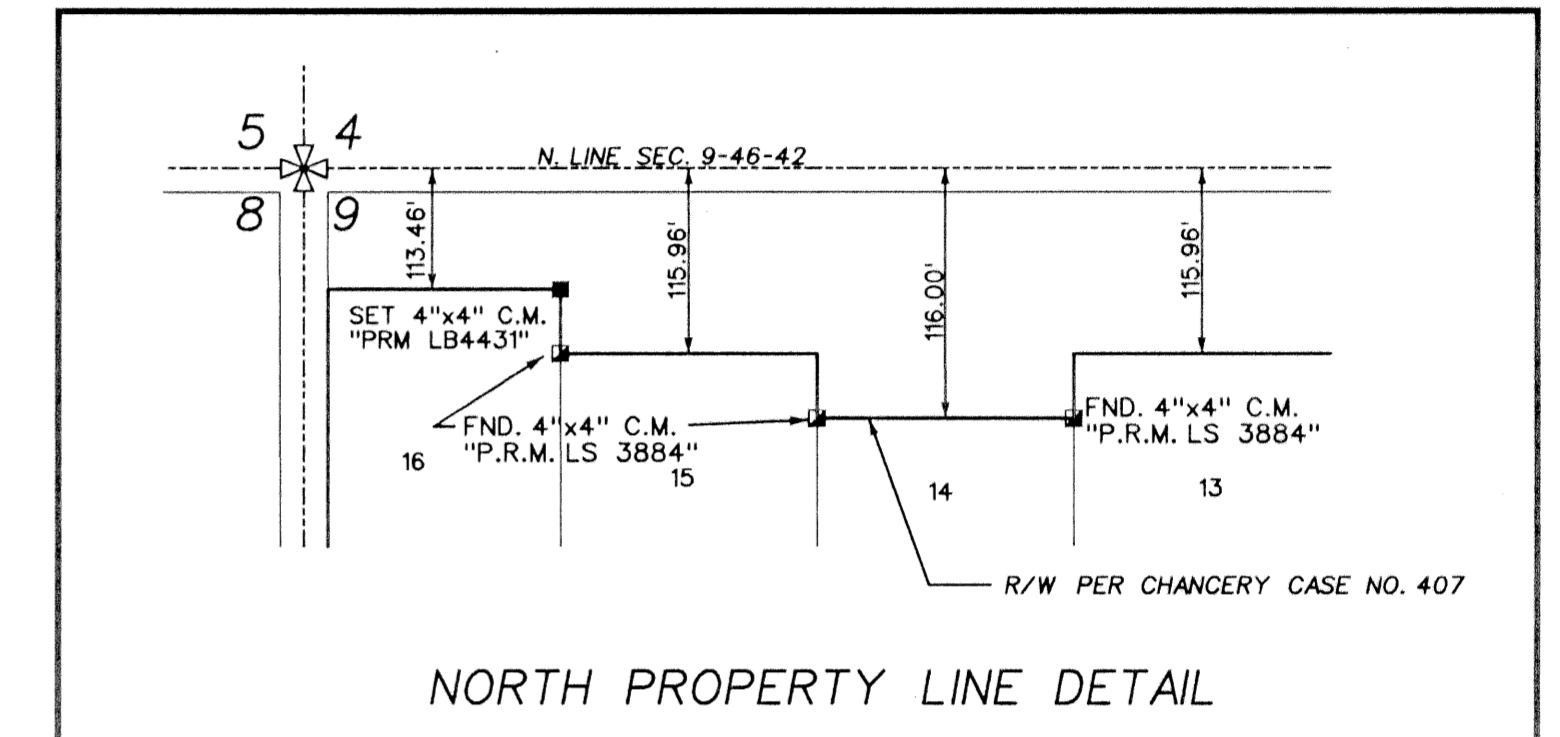
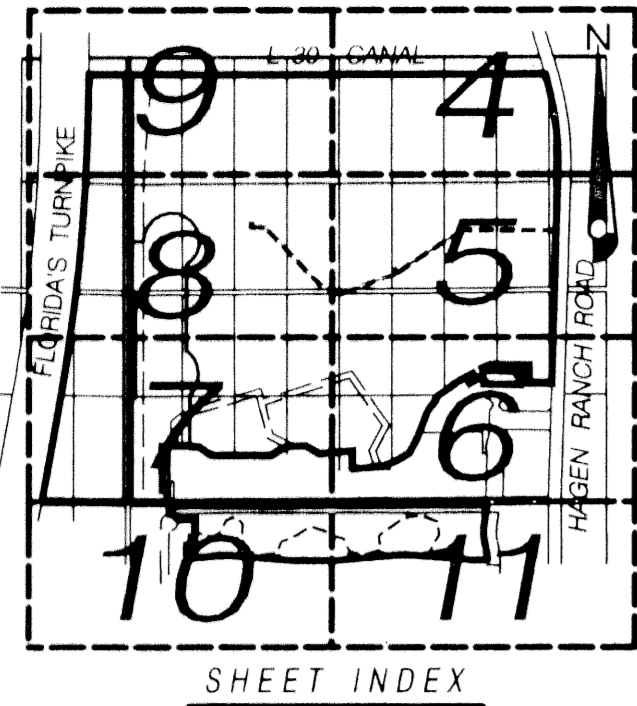
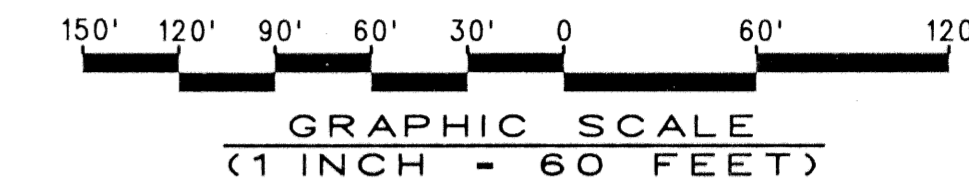
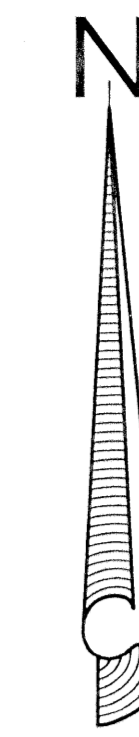
0633-0014

# 168

(A PART OF POLO TRACE II P.U.D.)

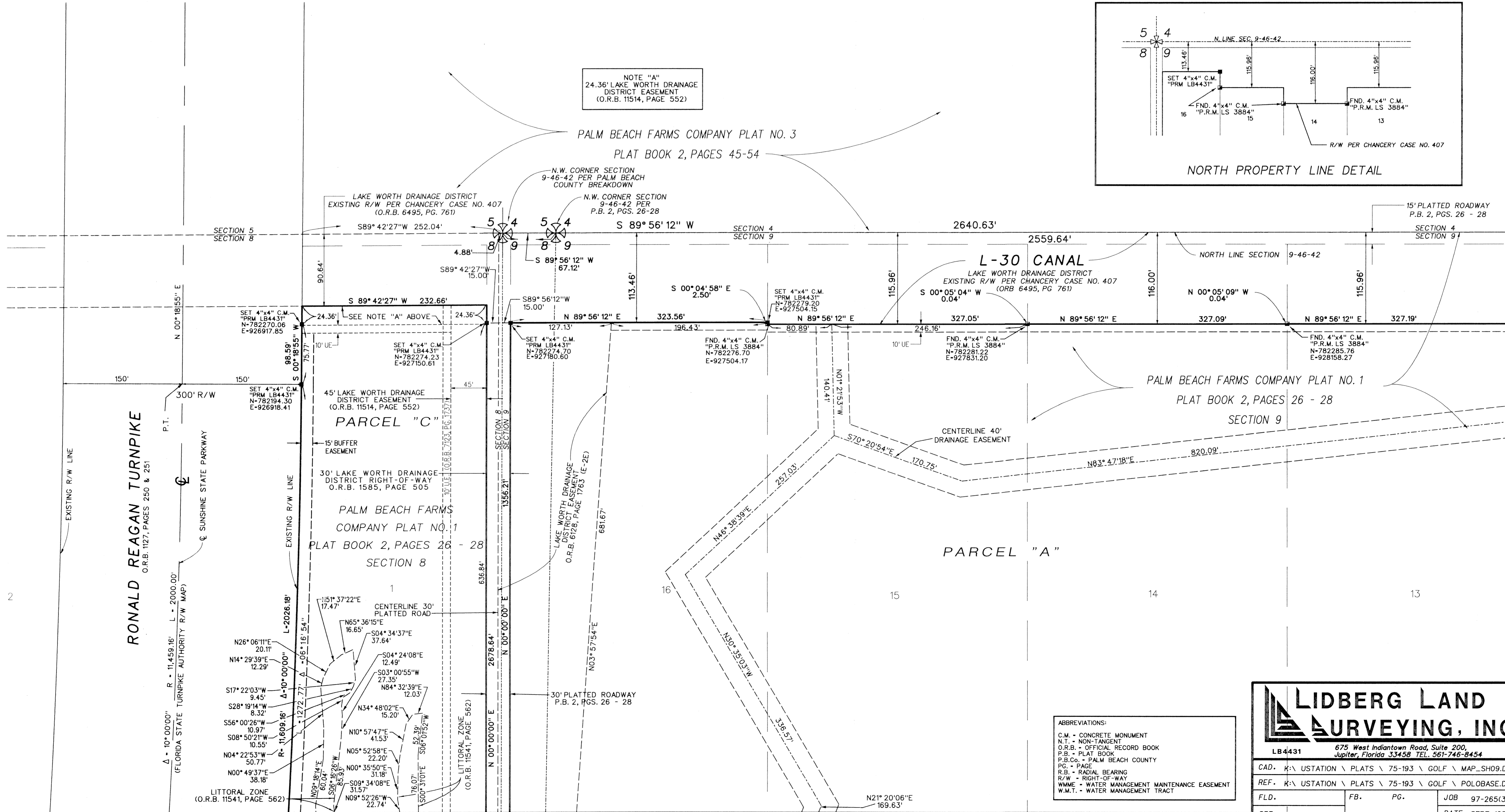
BEING A REPLAT OF A PORTION OF PALM BEACH FARMS COMPANY PLAT NO. 1,  
ACCORDING TO THE PLAT THEREOF, AS RECORDED IN PLAT BOOK 2, PAGES 26 - 28,  
ALSO BEING A REPLAT OF A PORTION OF POLO TRACE II, PLAT NO. 1  
ACCORDING TO THE PLAT THEREOF, AS RECORDED IN PLAT BOOK 75, PAGES 193 - 204,  
PUBLIC RECORDS OF PALM BEACH COUNTY, FLORIDA.

LYING IN SECTIONS 8 AND 9, TOWNSHIP 46 SOUTH, RANGE 42 EAST  
PALM BEACH COUNTY, FLORIDA  
JUNE, 2000 SHEET 9 OF 11



NOTE "A"  
24.36' LAKE WORTH DRAINAGE  
DISTRICT EASEMENT  
(O.R.B. 11514, PAGE 552)

PALM BEACH FARMS COMPANY PLAT NO. 3  
PLAT BOOK 2, PAGES 45-54



MATCH LINE - SEE SHEET 4 OF 11

MATCH LINE - SEE SHEET 8 OF 11

REVISION  
PAGE 168  
FLOODING PHD  
ZONING PHD  
ZIP CODE 33446  
TAL 459  
TUD NAME Polo Trace II

ABBREVIATIONS:  
C.M. - CONCRETE MONUMENT  
N.T. - NON-TANGENT  
O.R.B. - OFFICIAL RECORD BOOK  
P.B. - PLAT BOOK  
P.B.Co. - PALM BEACH COUNTY  
PG. - PAGE  
R.B. - RADIAL BEARING  
R/W - RIGHT-OF-WAY  
W.M.E. - WATER MANAGEMENT MAINTENANCE EASEMENT  
W.M.T. - WATER MANAGEMENT TRACT

**LIDBERG LAND SURVEYING, INC.**  
675 West Indiantown Road, Suite 200,  
Jupiter, Florida 33458 TEL. 561-746-8454  
LB4431  
CAD. K:\USTATION\PLATS\75-193\GOLF\MAP\_SH09.DGN  
REF. K:\USTATION\PLATS\75-193\GOLF\POLOBASE.DGN  
FLD. FB. PG. JOB 97-265(306)  
OFF. CASASUS DATE SEPT. 1998  
CKD. D.C.L. SHEET 9 OF 11 DWG. D97-265P