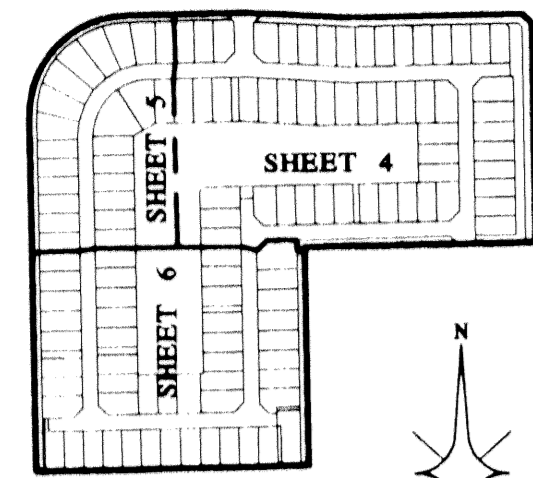
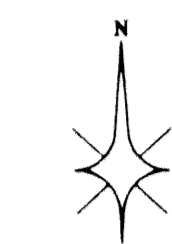


LESTER P.U.D. - PLAT FOUR

BEING A REPLAT OF PARCEL "C" & TRACT "D", LESTER P.U.D. - PLAT FIVE AS RECORDED IN PLAT BOOK 88, PAGES 78 THROUGH 83 OF THE PUBLIC RECORDS OF PALM BEACH COUNTY, FLORIDA. SITUATE IN THE SOUTHEAST ONE-QUARTER OF SECTION 35, TOWNSHIP 45 SOUTH, RANGE 42 EAST, PALM BEACH COUNTY, FLORIDA.
MAY, 2000



KEY MAP
1" = 500'



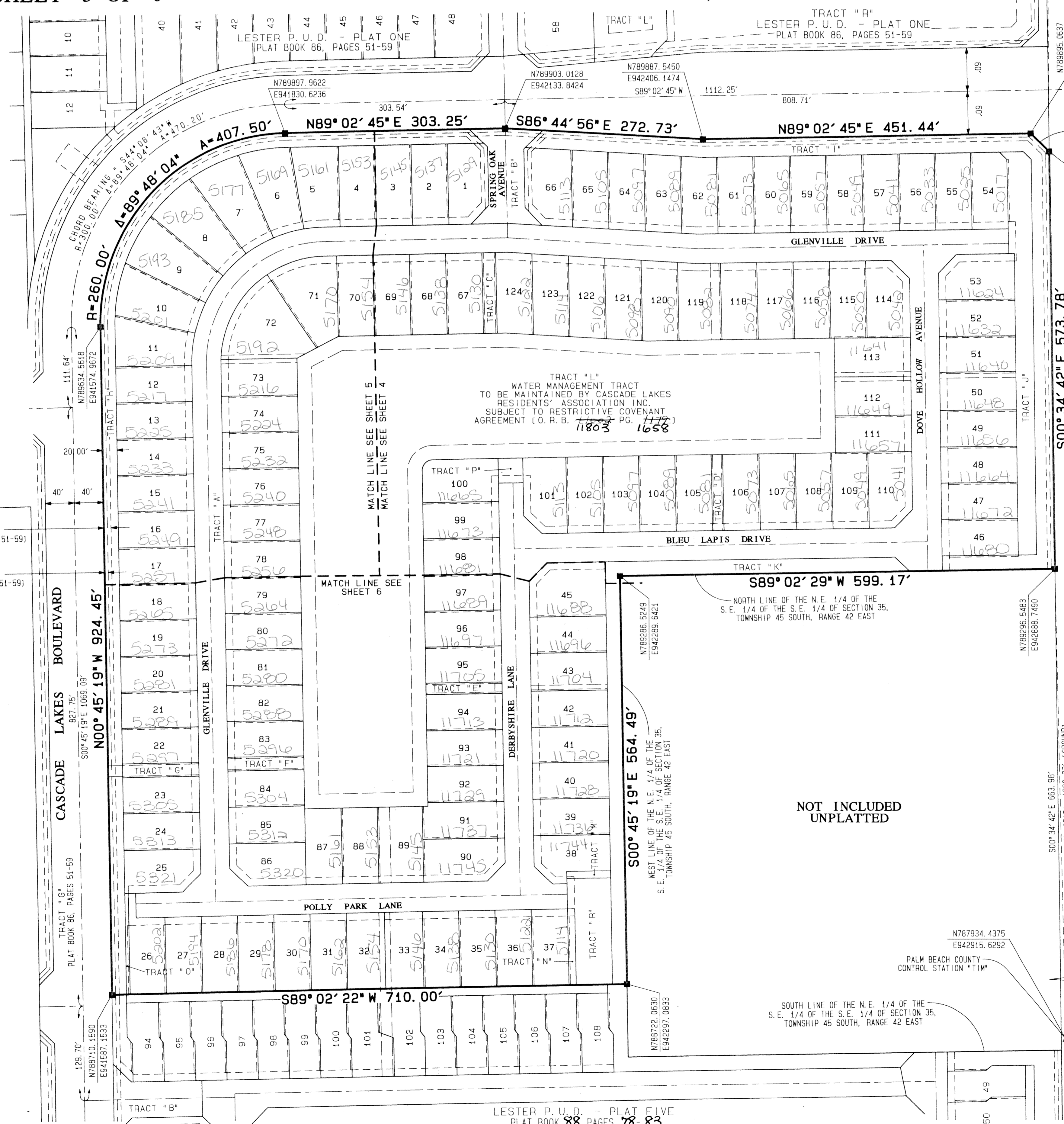
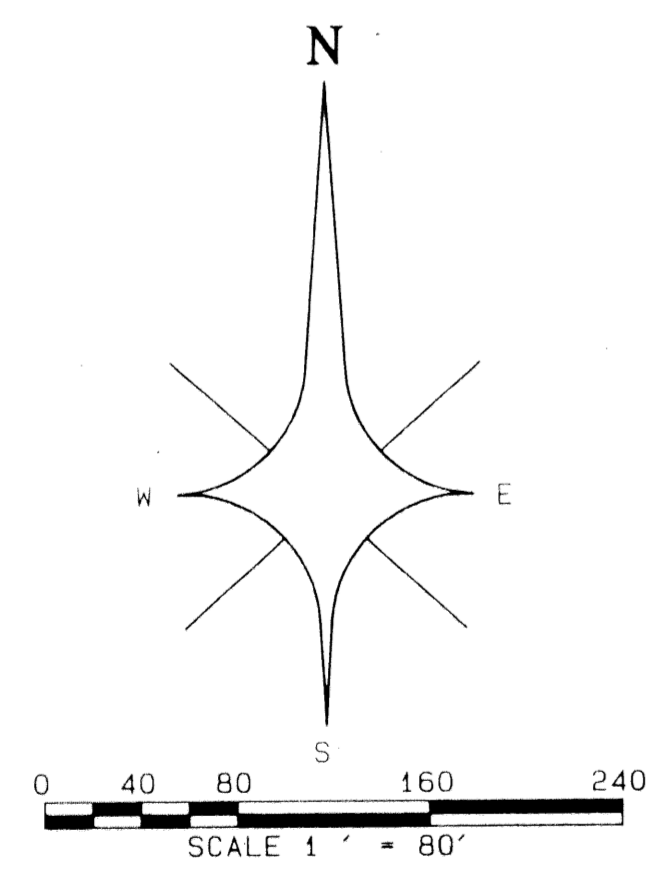
128

STATE OF FLORIDA } SS
COUNTY OF PALM BEACH }
THIS PLAT WAS FILED FOR
RECORD AT _____ DAY OF
THIS _____ AD, 20____ AND
DULY RECORDED IN PLAT BOOK
_____ ON PAGES _____ AND

DOROTHY H. WILKEN, CLERK
CIRCUIT COURT
BY: _____ DC

LESTER P. U. D. - PLAT TWO
PLAT BOOK 86, PAGES 132-136

LESTER P. U. D. - PLAT THREE
PLAT BOOK 86, PAGES 186-191



- LEGEND:**
- A = CENTRAL ANGLE/DELTA
 - C.L. = CENTERLINE
 - CH = CHORD
 - D.B. = DEED BOOK
 - D.E. = DRAINAGE EASEMENT
 - F.P. & L. = FLORIDA POWER AND LIGHT COMPANY
 - A.L. = ARC LENGTH
 - L.A.E. = LIMITED ACCESS EASEMENT
 - L.M.A.E. = LAKE MAINTENANCE ACCESS EASEMENT
 - L.M.E. = LAKE MAINTENANCE EASEMENT
 - L.O.D. = LAKE NORTH DRAINAGE DISTRICT
 - N.R. = NON-RADIAL
 - N.S. = NOT TO SCALE
 - O.R.B. = OFFICIAL RECORDS BOOK
 - P.B. = PLAT BOOK
 - P.P. = PAGE
 - P.O.B. = POINT OF BEGINNING
 - P.O.C. = POINT OF COMMENCEMENT
 - R. = RADIAL TO FRONT LOT LINE
 - R.R. = RADIAL TO REAR LOT LINE
 - R/W = RIGHT OF WAY
 - U.E. = UTILITY EASEMENT
 - W.C. = WITNESS CORNER
 - Z.L.M.E. = ZERO LOT LINE MAINTENANCE EASEMENT
 - PCP = PERMANENT CONTROL POINT (PCP)
 - PCP LB4820
 - = PERMANENT REFERENCE MONUMENT (PRM)
 - SET PRM LB4820

NOT INCLUDED
UNPLATTED

LESTER P.U.D. - PLAT FOUR
PLAT BOOK 88, PAGES 83-88
DATE: 5/10/00
DRAWN BY: AH
CHECKED BY: 35
DATE: 5/10/00
PUD NAME:

PROFESSIONAL
SURVEYORS
AND MAPPERS
LB4820

ATLANTIC - CARIBBEAN MAPPING, INC.
3070 JOG ROAD GREENACRES, FLORIDA 33457
(561) 964-7884; FAX (561) 964-1969