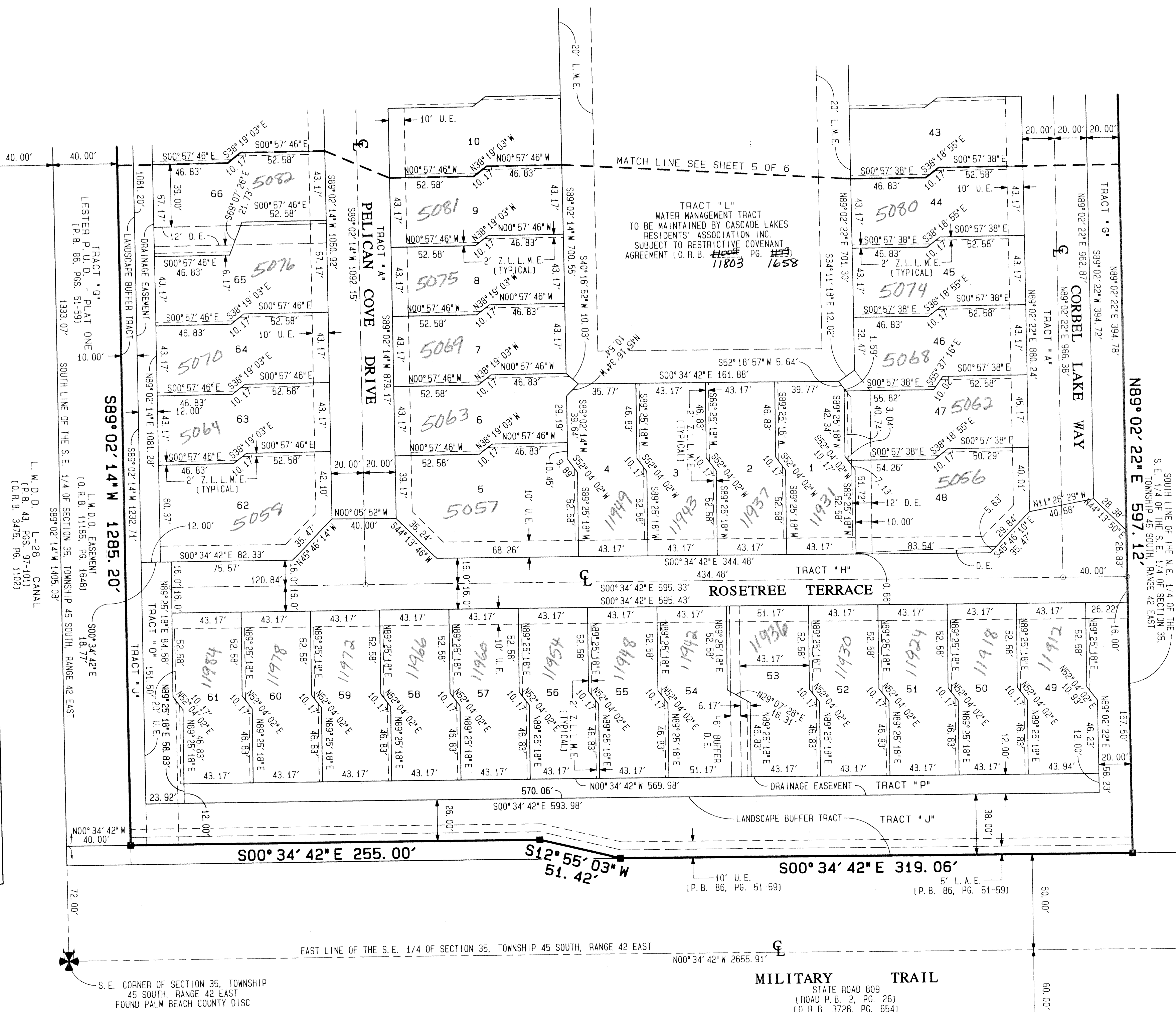
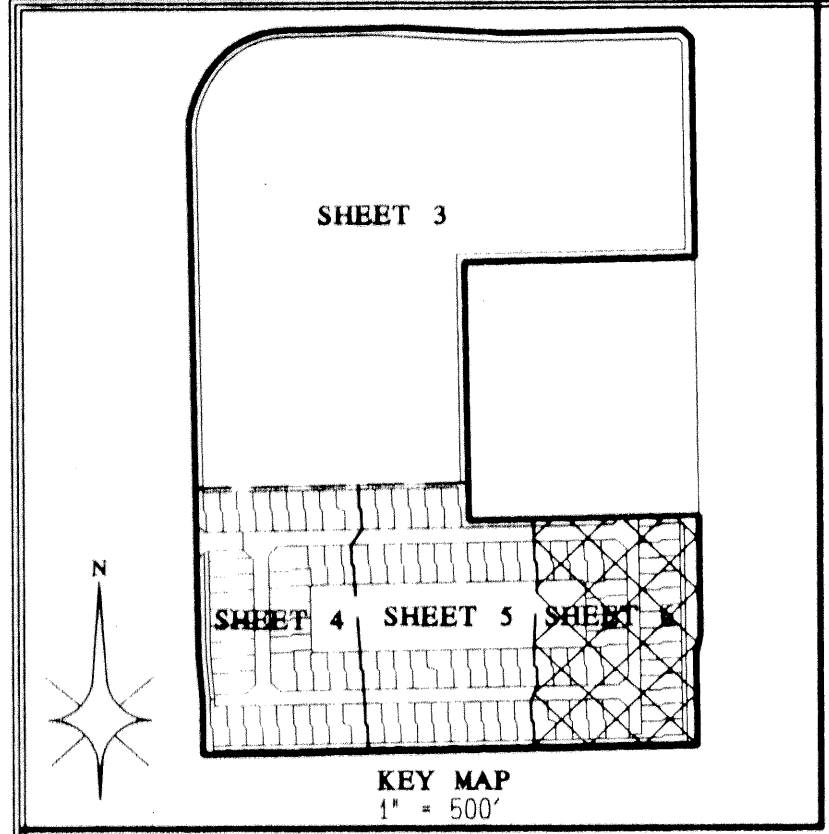


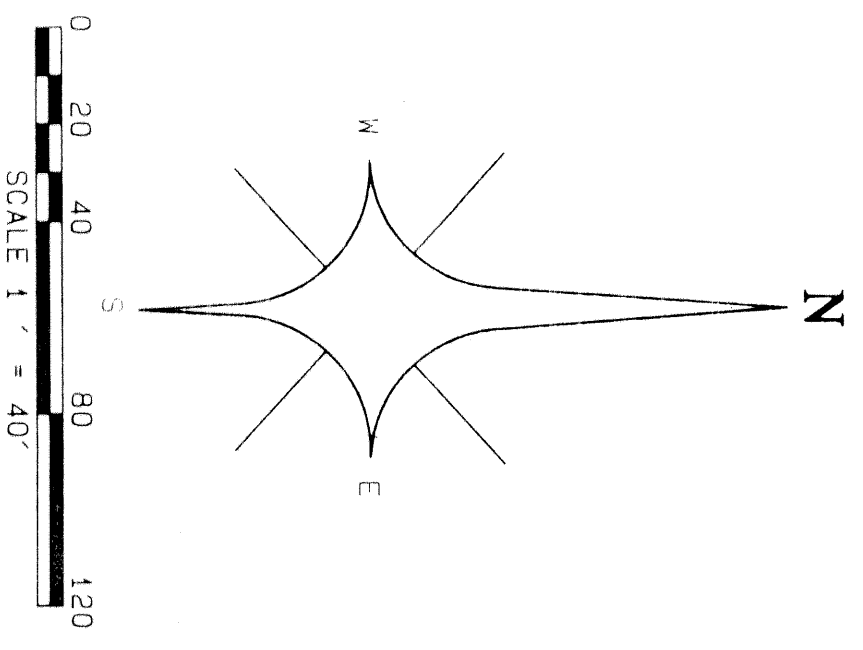
LESTER P.U.D. - PLAT FIVE

BEING A REPLAT OF PARCEL "C" & TRACT "H", LESTER P.U.D. - PLAT ONE AS RECORDED IN PLAT BOOK 86, PAGES 51 THROUGH 59 OF THE PUBLIC RECORDS OF PALM BEACH COUNTY, FLORIDA. SITUATE IN THE SOUTHEAST ONE-QUARTER OF SECTION 35, TOWNSHIP 45 SOUTH, RANGE 42 EAST, PALM BEACH COUNTY, FLORIDA.
SHEET 6 OF 6
MARCH, 2000

STATE OF FLORIDA } SS
COUNTY OF PALM BEACH }
THIS PLAT WAS FILED FOR RECORD AT _____ DAY OF THIS _____ AD, 20____ AND DULY RECORDED IN PLAT BOOK _____ ON PAGES _____ AND _____
DOROTHY H. WILKEN, CLERK
CIRCUIT COURT
BY: _____ DC



- LEGEND:**
- ▲ = CENTRAL ANGLE/Delta
 - = CENTERLINE
 - = CHORD
 - = DEED BOOK
 - = DRAINAGE EASEMENT
 - = FLORIDA POWER AND LIGHT COMPANY
 - = ARC LENGTH
 - = LIMITED ACCESS EASEMENT
 - = LAKE MAINTENANCE ACCESS EASEMENT
 - = LAKE MAINTENANCE EASEMENT
 - = LAKE WORTH DRAINAGE DISTRICT
 - = NON-RADIAL
 - = NOT TO SCALE
 - = OFFICIAL RECORDS BOOK
 - = PLAT BOOK
 - = PAGE
 - = POINT OF BEGINNING
 - = POINT OF COMMENCEMENT
 - = RADIUS (RADI)
 - = RADIAL TO FRONT LOT LINE
 - = RADIAL TO REAR LOT LINE
 - = RIGHT OF WAY
 - = UTILITY EASEMENT
 - = WITNESS CORNER
 - = ZERO LOT LINE MAINTENANCE EASEMENT
 - = PERMANENT CONTROL POINT (PCP)
PCP LB4820
 - = PERMANENT REFERENCE MONUMENT (PRM)
SET PRM LB4820



83
2056
PLISE
33437
88
35
957
PHOTO DATE