

# LESTER P.U.D. - PLAT FIVE

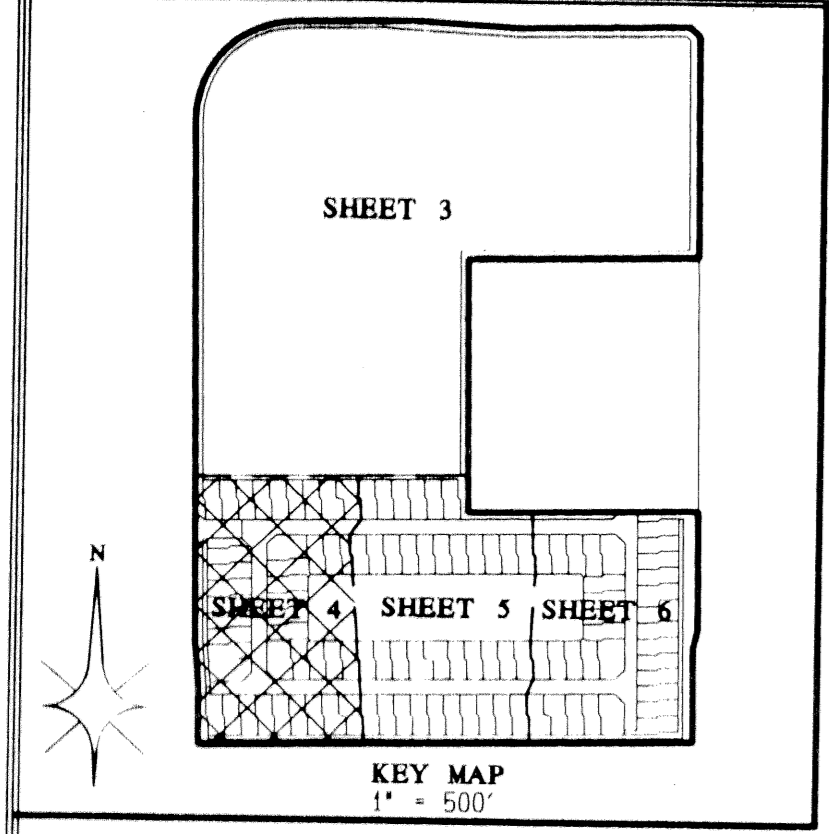
BEING A REPLAT OF PARCEL "C" & TRACT "H", LESTER P.U.D. - PLAT ONE AS RECORDED IN PLAT BOOK 86, PAGES 51 THROUGH 59 OF THE PUBLIC RECORDS OF PALM BEACH COUNTY, FLORIDA. SITUATE IN THE SOUTHEAST ONE-QUARTER OF SECTION 35, TOWNSHIP 45 SOUTH, RANGE 42 EAST, PALM BEACH COUNTY, FLORIDA.

MARCH, 2000

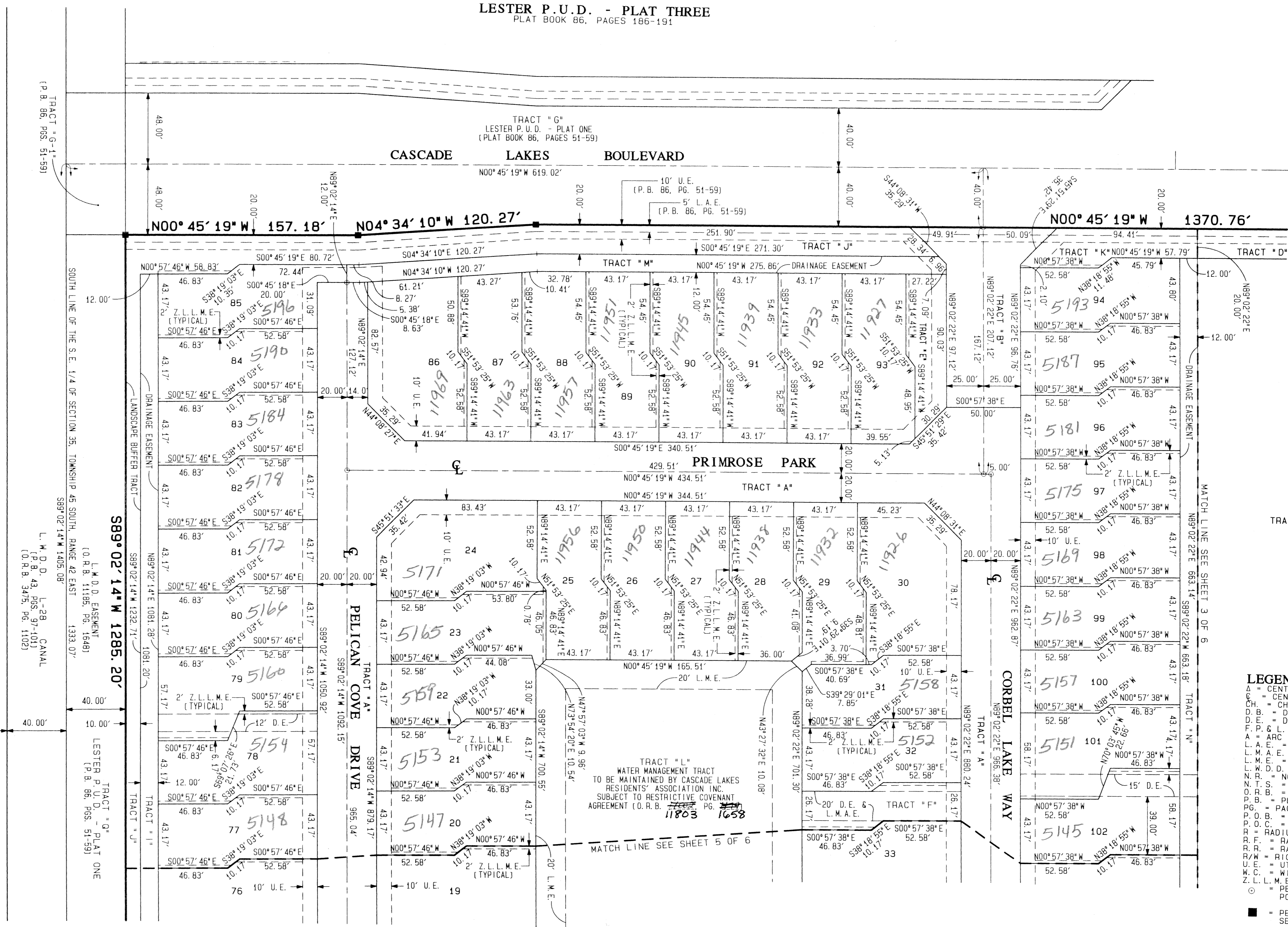
0742-008

81

STATE OF FLORIDA }  
COUNTY OF PALM BEACH } SS  
THIS PLAT WAS FILED FOR  
RECORD AT \_\_\_\_\_ DAY OF  
THIS \_\_\_\_\_ AD. 20\_\_\_\_ AND  
DULY RECORDED IN PLAT BOOK  
\_\_\_\_\_ ON PAGES \_\_\_\_\_ AND  
DOROTHY H. WILKEN, CLERK  
CIRCUIT COURT  
BY: \_\_\_\_\_ DC

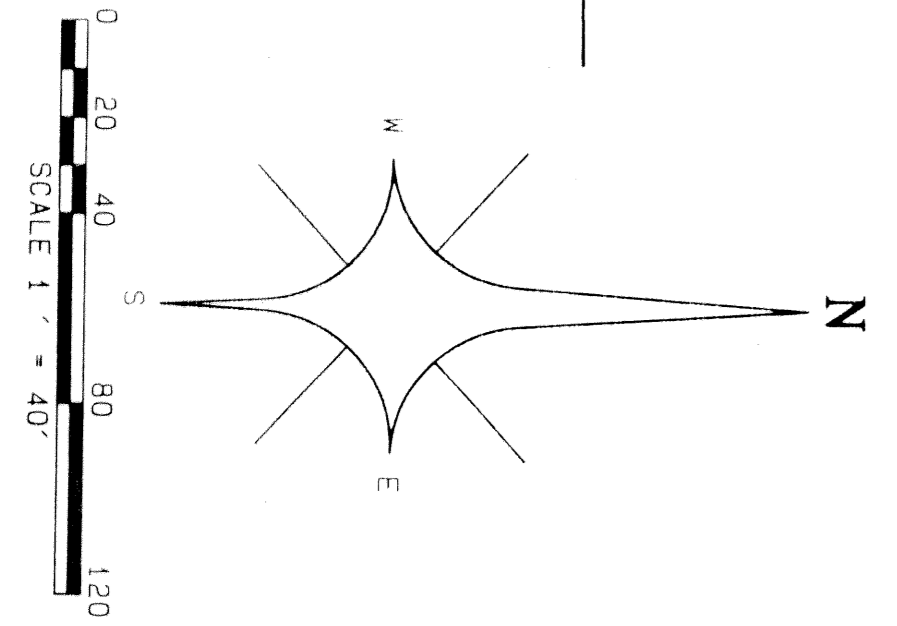


LESTER P.U.D. - PLAT THREE  
PLAT BOOK 86, PAGES 186-191



- LEGEND:**
- A = CENTRAL ANGLE/DELTA
  - C.L. = CENTERLINE
  - CH. = CHORD
  - DB. = DEED BOOK
  - D.E. = DRAINAGE EASEMENT
  - F.P. & L. = FLORIDA POWER AND LIGHT COMPANY
  - A = ARC LENGTH
  - L.A.E. = LIMITED ACCESS EASEMENT
  - L.M.A.E. = LAKE MAINTENANCE ACCESS EASEMENT
  - L.M.E. = LAKE MAINTENANCE EASEMENT
  - L.W.D. = LAKE WORTH DRAINAGE DISTRICT
  - N.B. = NON-RADIAL
  - T.S. = NOT TO SCALE
  - OR.B. = OFFICIAL RECORDS BOOK
  - P. = PLAT BOOK
  - P. = PAGE
  - P.O.B. = POINT OF BEGINNING
  - P.O.C. = POINT OF COMMENCEMENT
  - R. = RADIUS (RADIUS)
  - R.F. = RADIAL TO FRONT LOT LINE
  - R.R. = RADIAL TO REAR LOT LINE
  - R.W. = RIGHT OF WAY
  - U.E. = UTILITY EASEMENT
  - W.C. = WITNESS CORNER
  - Z.L.L.M.E. = ZERO LOT LINE MAINTENANCE EASEMENT
  - PCP = PERMANENT CONTROL POINT (PCP)  
PCP LB4820
  - = PERMANENT REFERENCE MONUMENT (PRM)  
SET PRM LB4820

PIPER'S GLEN BOULEVARD  
120' RIGHT OF WAY  
(P.B. 43, PGS. 97-101)



18  
2056  
20102  
33437  
88  
AAH  
35  
959  
PUD NAME