

LESTER P.U.D. - PLAT FIVE

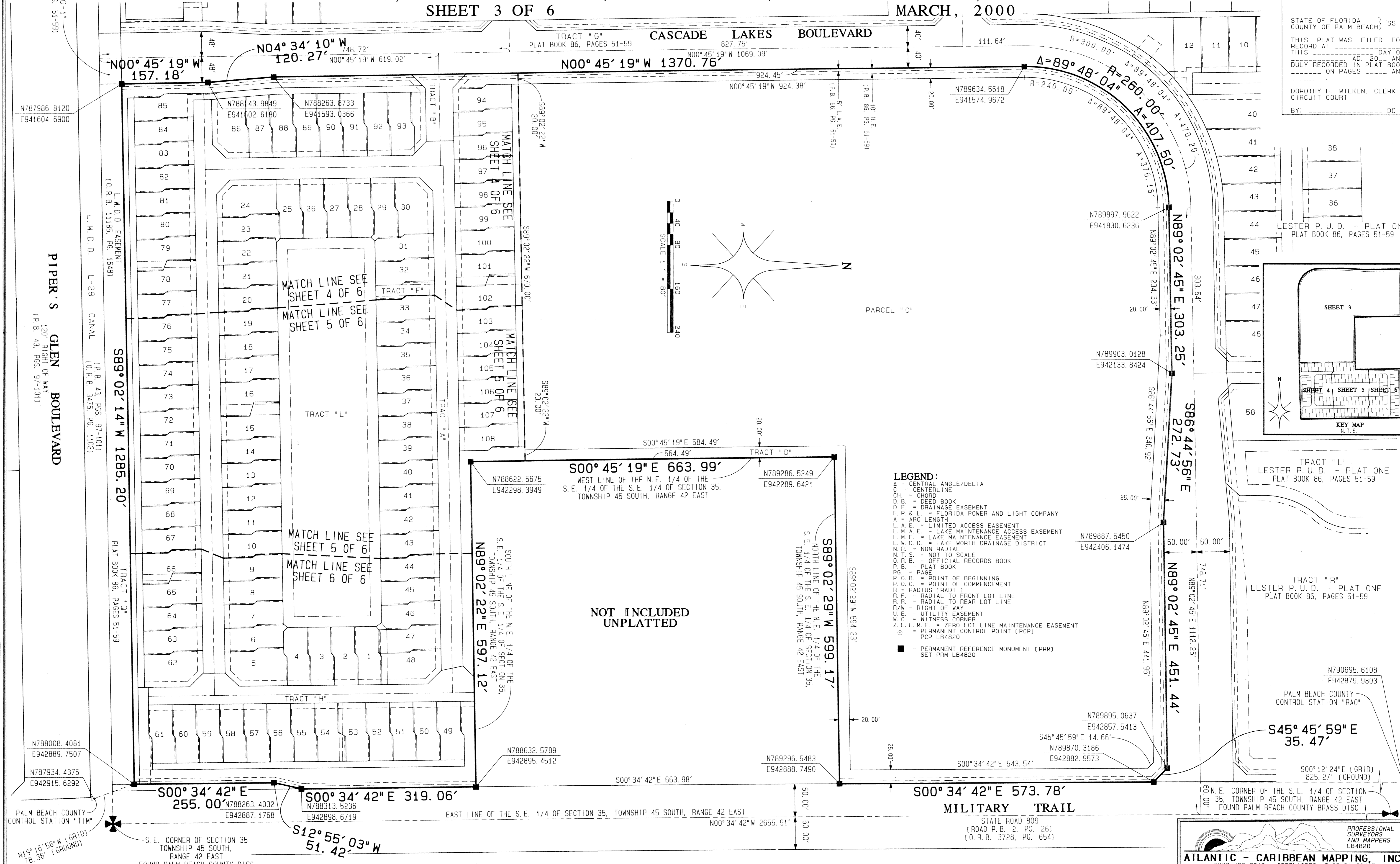
0742-008

80

BEING A REPLAT OF PARCEL "C" & TRACT "H", LESTER P.U.D. - PLAT ONE AS RECORDED IN PLAT BOOK 86, PAGES 51 THROUGH 59 OF THE PUBLIC RECORDS OF PALM BEACH COUNTY, FLORIDA. SITUATE IN THE SOUTHEAST ONE-QUARTER OF SECTION 35, TOWNSHIP 45 SOUTH, RANGE 42 EAST, PALM BEACH COUNTY, FLORIDA.
SHEET 3 OF 6 MARCH, 2000

LESTER P.U.D. - PLAT THREE
PLAT BOOK 86, PAGES 186-191

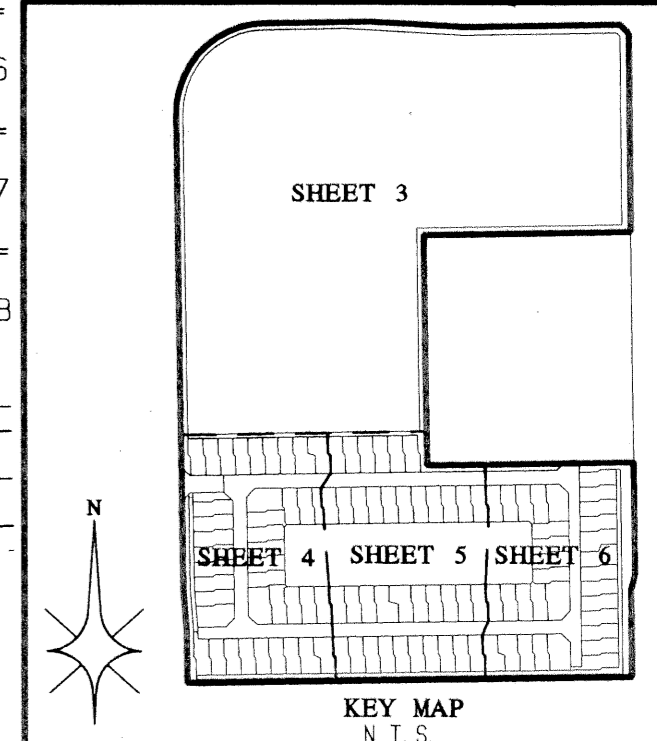
LESTER P.U.D. - PLAT TWO
PLAT BOOK 86, PAGES 132-136



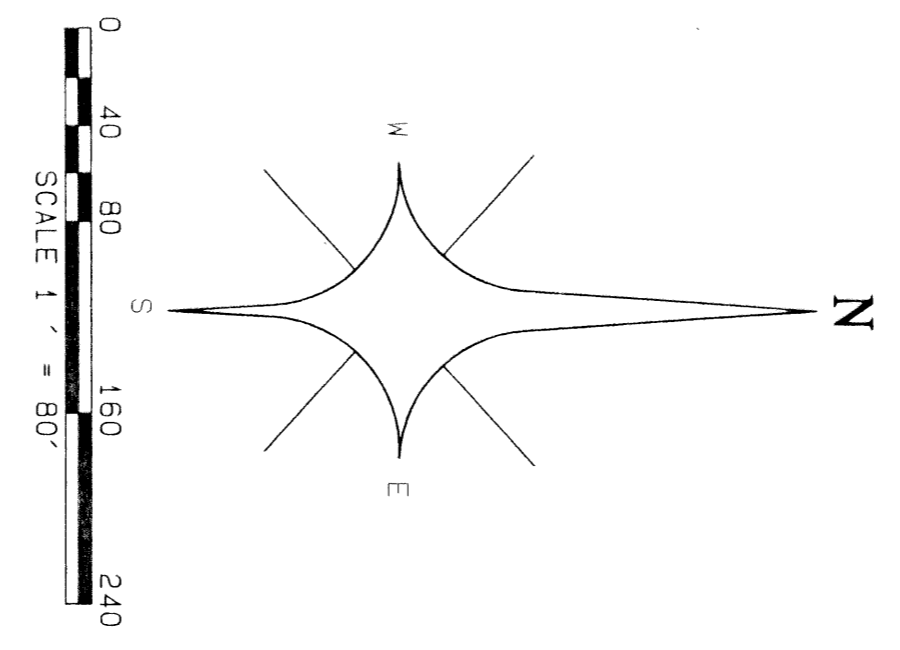
STATE OF FLORIDA }
COUNTY OF PALM BEACH } 55
THIS PLAT WAS FILED FOR
RECORD AT _____ DAY OF
THIS _____ MO. 2000 AND
DULY RECORDED IN PLAT BOOK
ON PAGES _____ AND

DOROTHY H. WILKEN, CLERK
CIRCUIT COURT
BY: _____ DC

LESTER P.U.D. - PLAT ONE
PLAT BOOK 86, PAGES 51-59



- LEGEND:**
- Δ = CENTRAL ANGLE/Delta
 - C = CENTERLINE
 - CH = CHORD
 - D.B. = DEED BOOK
 - D.E. = DRAINAGE EASEMENT
 - F.P. & L. = FLORIDA POWER AND LIGHT COMPANY
 - A = ARC LENGTH
 - L.A.E. = LIMITED ACCESS EASEMENT
 - L.M.A.E. = LAKE MAINTENANCE ACCESS EASEMENT
 - L.M.E. = LAKE MAINTENANCE EASEMENT
 - L.W.D.D. = LAKE WORTH DRAINAGE DISTRICT
 - N.R. = NON-RADIAL
 - N.T.S. = NOT TO SCALE
 - O.R.B. = OFFICIAL RECORDS BOOK
 - P.C. = PLAT BOOK
 - P.G. = PAGE
 - P.O.B. = POINT OF BEGINNING
 - P.O.C. = POINT OF COMMENCEMENT
 - R = RADIUS (RADIUS)
 - R.F. = RADIAL TO FRONT LOT LINE
 - R.R. = RADIAL TO REAR LOT LINE
 - R/W = RIGHT OF WAY
 - U.E. = UTILITY EASEMENT
 - W.C. = WITNESS CORNER
 - Z.L.M.E. = ZERO LOT LINE MAINTENANCE EASEMENT
 - PCP = PERMANENT CONTROL POINT (PCP)
PCP LB4820
 - = PERMANENT REFERENCE MONUMENT (PRM)
SET PRM LB4820



88
86
35
33437
20516
RSISE
759
PUB NAME

PROFESSIONAL
SURVEYORS
AND MAPPERS
LB4820
ATLANTIC - CARIBBEAN MAPPING, INC.
3070 JOG ROAD - GREENACRES, FLORIDA 33467
(561) 964-7884; FAX (561) 964-1969