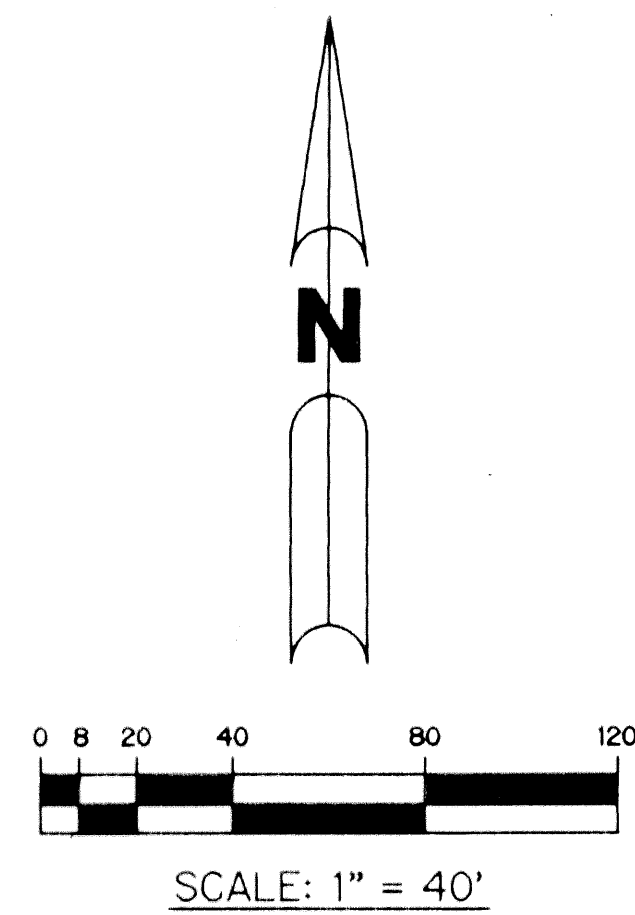


RIVERMILL

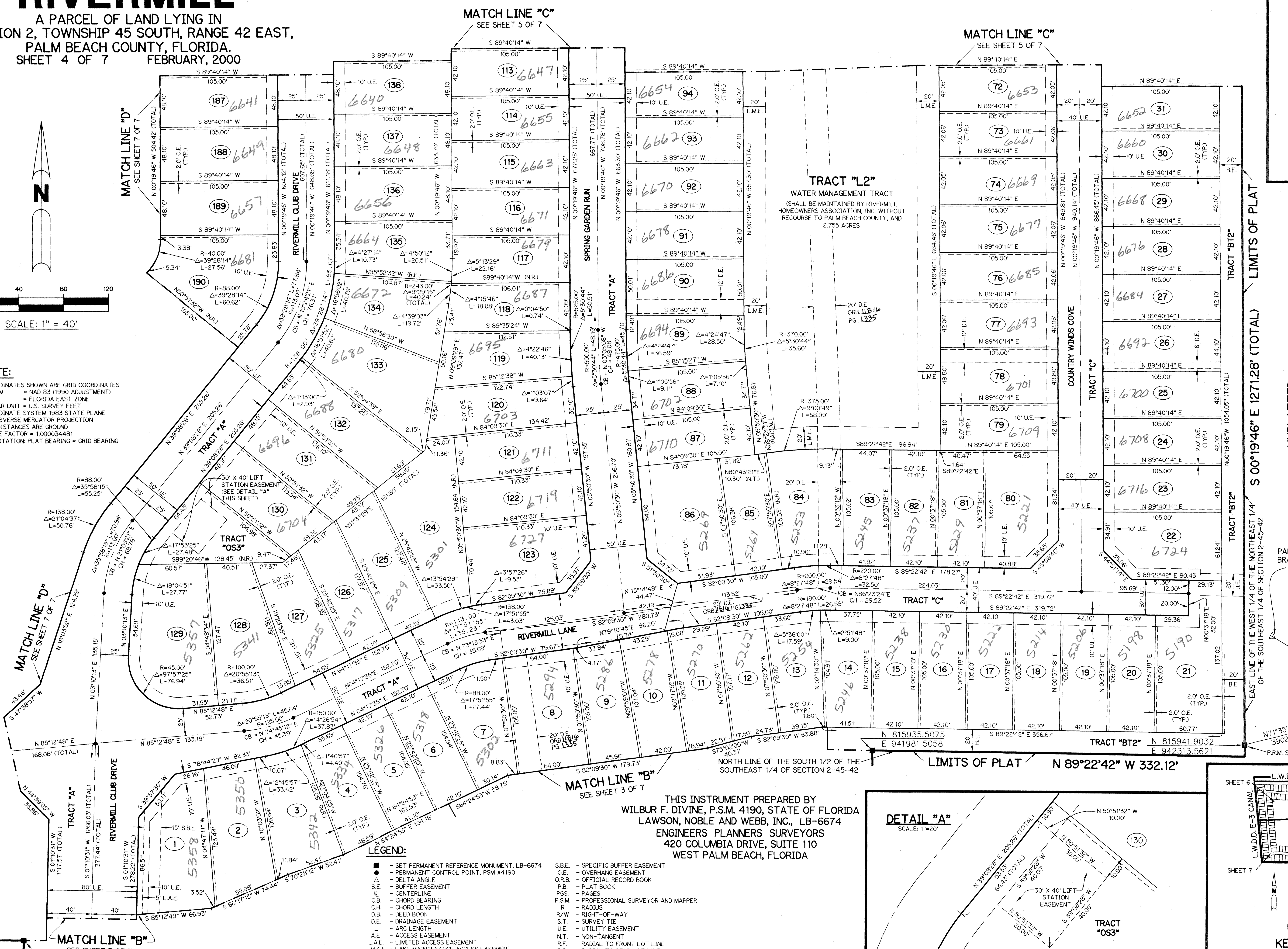
A PARCEL OF LAND LYING IN SECTION 2, TOWNSHIP 45 SOUTH, RANGE 42 EAST, PALM BEACH COUNTY, FLORIDA. SHEET 4 OF 7 FEBRUARY, 2000

0751-001

74

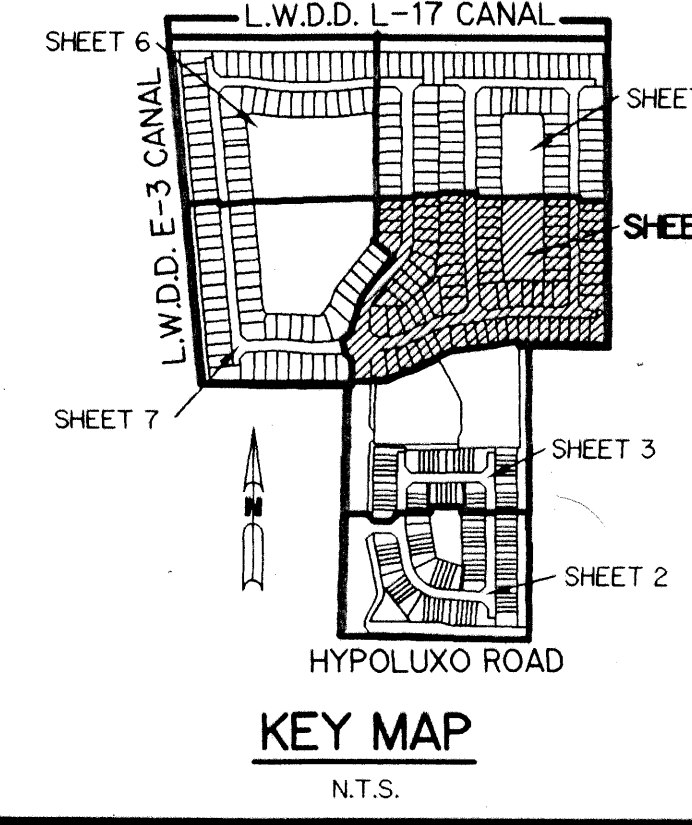
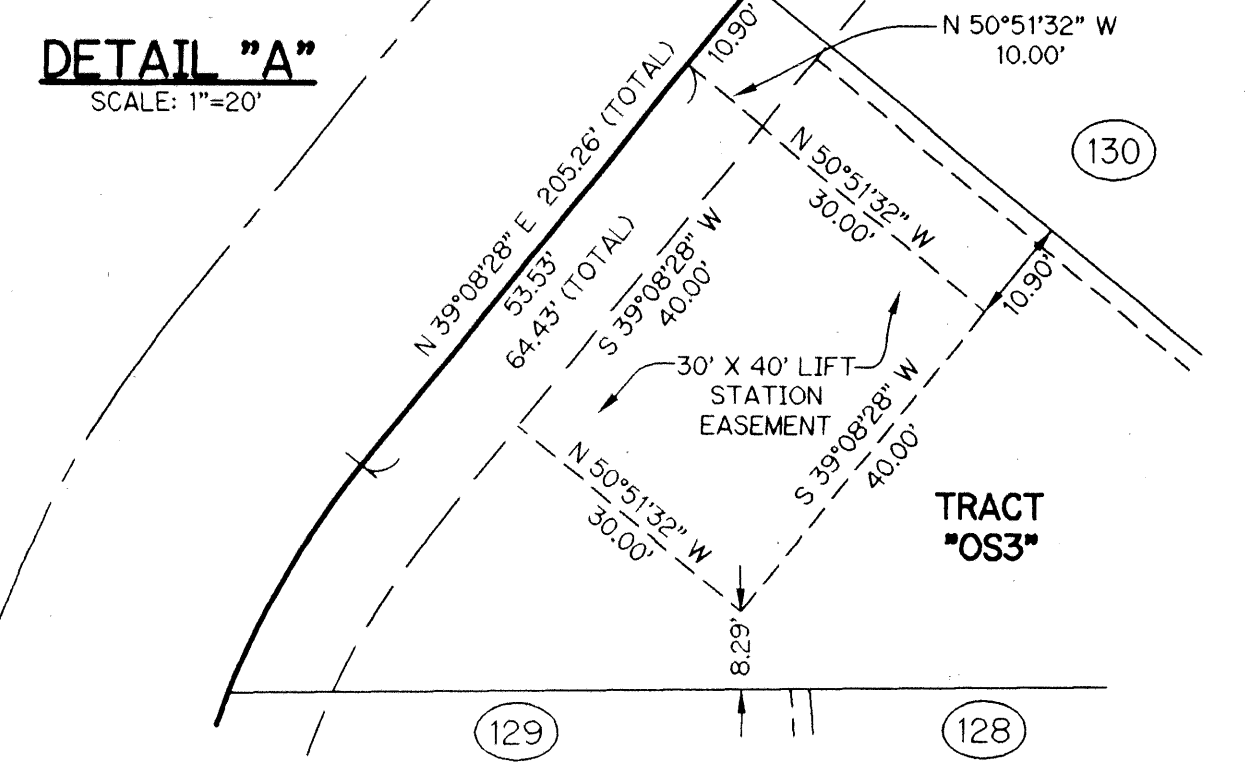


NOTE:
 COORDINATES SHOWN ARE GRID COORDINATES DATUM = NAD 83 (1990 ADJUSTMENT)
 ZONE = FLORIDA EAST ZONE
 LINEAR UNIT = U.S. SURVEY FEET
 COORDINATE SYSTEM 1983 STATE PLANE TRANSVERSE MERCATOR PROJECTION
 ALL DISTANCES ARE GROUND
 SCALE FACTOR = 1.000034481
 NO ROTATION: PLAT BEARING = GRID BEARING



THIS INSTRUMENT PREPARED BY
 WILBUR F. DIVINE, P.S.M. 4190, STATE OF FLORIDA
 LAWSON, NOBLE AND WEBB, INC., LB-6674
 ENGINEERS PLANNERS SURVEYORS
 420 COLUMBIA DRIVE, SUITE 110
 WEST PALM BEACH, FLORIDA

- LEGEND:**
- - SET PERMANENT REFERENCE MONUMENT, LB-6674
 - - PERMANENT CONTROL POINT, PSM #4190
 - △ - DELTA ANGLE
 - B.E. - BUFFER EASEMENT
 - C.E. - CENTERLINE
 - C.B. - CHORD BEARING
 - C.L. - CHORD LENGTH
 - D.B. - DEED BOOK
 - D.E. - DRAINAGE EASEMENT
 - L. - ARC LENGTH
 - A.E. - ACCESS EASEMENT
 - L.M.A.E. - LIMITED ACCESS EASEMENT
 - L.M.A.E. - LAKE MAINTENANCE ACCESS EASEMENT
 - L.M.E. - LAKE MAINTENANCE EASEMENT
 - L.W.D.D. - LAKE WORTH DRAINAGE DISTRICT
 - N.R. - NOT RADIAL
 - N.T.S. - NOT TO SCALE
 - S.B.E. - SPECIFIC BUFFER EASEMENT
 - O.E. - OVERHANG EASEMENT
 - O.R.B. - OFFICIAL RECORD BOOK
 - P.B. - PLAT BOOK
 - P.S. - PAGES
 - P.S.M. - PROFESSIONAL SURVEYOR AND MAPPER
 - R. - RADIUS
 - R/W. - RIGHT-OF-WAY
 - S.T. - SURVEY TIE
 - U.E. - UTILITY EASEMENT
 - N.T. - NON-TANGENT
 - R.F. - RADIAL TO FRONT LOT LINE
 - R.R. - RADIAL TO REAR LOT LINE
 - P.A.E. - PEDESTRIAN ACCESS EASEMENT
 - N 814602.8657
 - E 785753.1680 - DENOTES STATE PLANE COORDINATES



UNPLATTED

PALM BEACH COUNTY
 BRASS DISK "CADI"
 N 820796.7480
 E 940130.0560

PALM BEACH COUNTY
 BRASS DISK "SYLVIA"
 N 817174.0930
 E 946016.4520

NYE
 175B
 PUB/TDR
 34
 434
 NYE