

MIZNER'S PRESERVE P.U.D. - PARC CHANDON

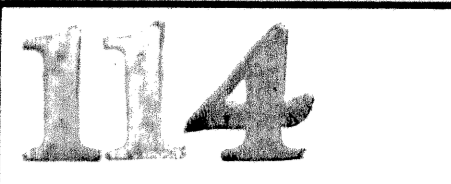
0704-007

A PLANNED UNIT DEVELOPMENT
BEING A REPLAT OF A PORTION OF TRACT L-1, MIZNER'S PRESERVE, AS RECORDED IN
PLAT BOOK 82, PAGES 167 THRU 170 PUBLIC RECORDS OF, PALM BEACH COUNTY, FLORIDA.
TOGETHER WITH A PORTION OF THE NORTHEAST QUARTER OF SECTION 27,
TOWNSHIP 46 SOUTH, RANGE 42 EAST, PALM BEACH COUNTY, FLORIDA.
SHEET 2 OF 2

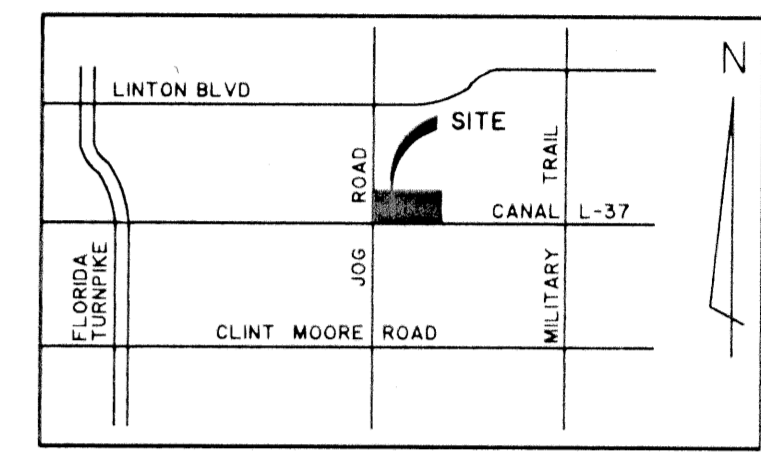
MIZNER'S PRESERVE (PLAT BOOK 82, PAGES 167 - 170)

P.O.C.
NORTH 1/4 CORNER
OF SECTION 27/46/42
FND. MOCK ROOS P.C.P.
S00°34'55"E
156.36'

S89°24'05"W (GRID)
2619.91' (GROUND)
N 766311.95
E 935369.58
FND. PALM BEACH
CO. BRASS DISK
"KING"



STATE OF FLORIDA
COUNTY OF PALM BEACH
THIS PLAT WAS FILED FOR RECORD AT
M. THIS DAY OF 19
AND DULY RECORDED IN PLAT BOOK NO.
ON PAGE
DOROTHY H. WILKEN, CLERK OF THE CIRCUIT COURT
BY: _____ D.C.



LOCATION MAP
SEC. 27 TWP. 46 RNG. 42

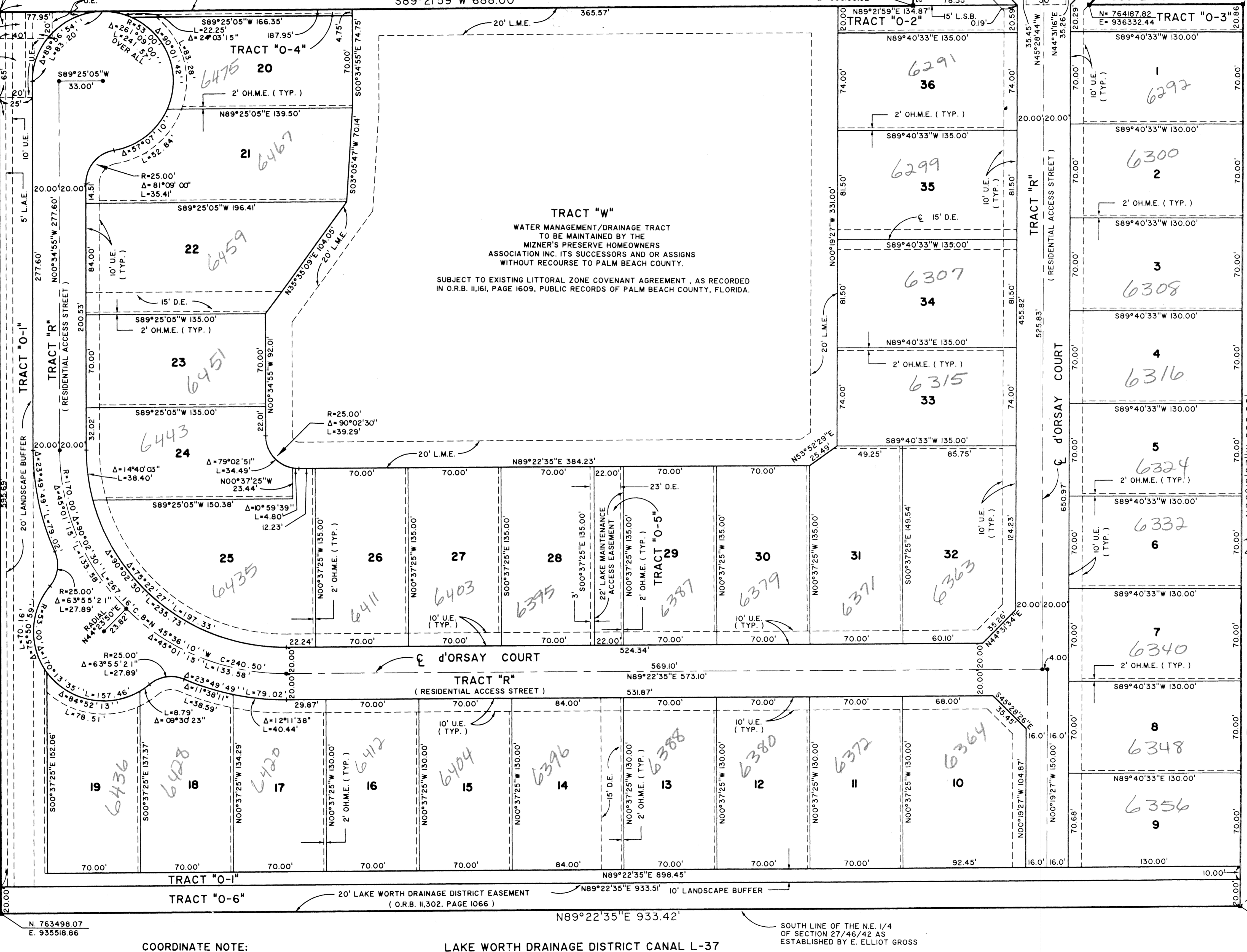
MIZNER'S PRESERVE PLAT TWO (PLAT BOOK 83, PAGES 32 - 33)

Scale 1" = 40'

NORTH EAST CORNER
OF SECTION 27/46/42
FND. PK NAIL
SET IN CONCRETE
IN ASPHALT CUTOUT
N 766252.74
E 938113.02

N 763508.23
E 936452.25

WEST LINE OF NORTHEAST 1/4
OF SECTION 27/46/42 BY E. ELLIOT GROSS
S00°17'30"E 2722.85'
S00°34'55"W 1355.74'
WEST LINE OF NORTHEAST 1/4
OF SECTION 27/46/42
(BASED ON PALM BEACH COUNTY
SECTIONAL BREAK DOWN)
JOG ROAD
(120' RIGHT-OF-WAY)
(O.R.B. 5833, PAGE 999)
S00°34'55"E 680.69'
CENTER OF SECTION 27/46/42
AS ESTABLISHED BY PALM BEACH
COUNTY SECTIONAL DATA.
N 66°53'57"E
14.87'
S89°25'05"W
60.00'
S89°22'35"W
73.74'
N 763498.07
E 935518.86

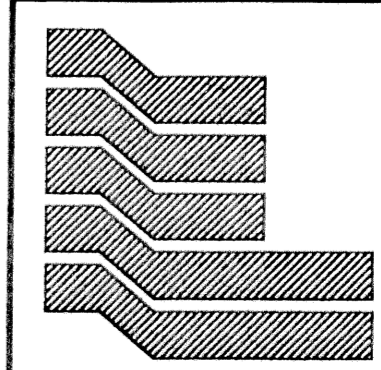


COORDINATE NOTE:
STATE PLANE COORDINATES SHOWN ARE GRID DATUM, NAD 83 1990
ADJUSTMENT, FLORIDA EAST ZONE, COORDINATE SYSTEM 1983 STATE
PLANE TRANSVERSE MERCATOR PROJECTION
LINEAR UNIT - US SURVEY FEET
ALL DISTANCES ARE GROUND
SCALE FACTOR = 1.000030889
GROUND DISTANCE X SCALE FACTOR = GRID DISTANCE
BEARINGS AS SHOWN HEREON ARE GRID DATUM, NAD 83 1990
ADJUSTMENT, FLORIDA EAST ZONE.

LAKE WORTH DRAINAGE DISTRICT CANAL L-37
(70' RIGHT-OF-WAY)
(O.R.B. 5516, PAGE 229)
(O.R.B. 5607, PAGE 622)

SOUTH LINE OF THE NE 1/4
OF SECTION 27/46/42 AS
ESTABLISHED BY E. ELLIOT GROSS

MIZNER'S PRESERVE
PAGE 114
FLOOD HAZARD ZONE # 2154
ZONING PUD
CREATED # 37
REV # 3
TAZ # 974
PUD NAME



Landmark Surveying & Mapping Inc.
1850 Forest Hill Boulevard
Ph. (561) 433-5405 Suite 100 W.P.B. Florida
LB NO. 4396

MIZNER'S PRESERVE P.U.D. PARC CHANDON