

# MELROSE P.U.D. (VERONA LAKES)

0255-011

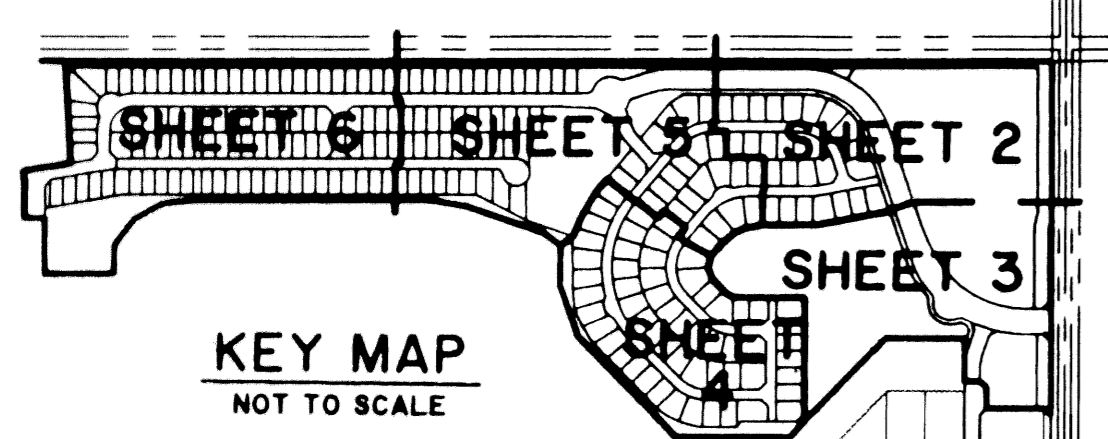
112

A PORTION OF A PLANNED UNIT DEVELOPMENT  
 LYING IN SECTION 18, TOWNSHIP 45 SOUTH, RANGE 42 EAST,  
 BEING THE REPLAT OF A PORTION OF TRACT "B", MELROSE PARK SECTION I, AS  
 RECORDED IN PLAT BOOK 41, PAGES 22 THRU 26, PUBLIC RECORDS OF PALM BEACH COUNTY, FLORIDA.

SHEET 6 OF 6

PALM BEACH FARMS COMPANY PLAT NO. 3

(PLAT BOOK 2, PAGES 45-54)



STATE OF FLORIDA SS  
 COUNTY OF PALM BEACH  
 THIS PLAT WAS FILED FOR RECORD AT \_\_\_\_\_  
 M, THIS DAY OF \_\_\_\_\_  
 AND DULY RECORDED IN PLAT BOOK NO. \_\_\_\_\_  
 ON PAGE \_\_\_\_\_  
 DOROTHY H. WILKEN,  
 CLERK OF THE CIRCUIT COURT  
 BY: \_\_\_\_\_ D.C.

