

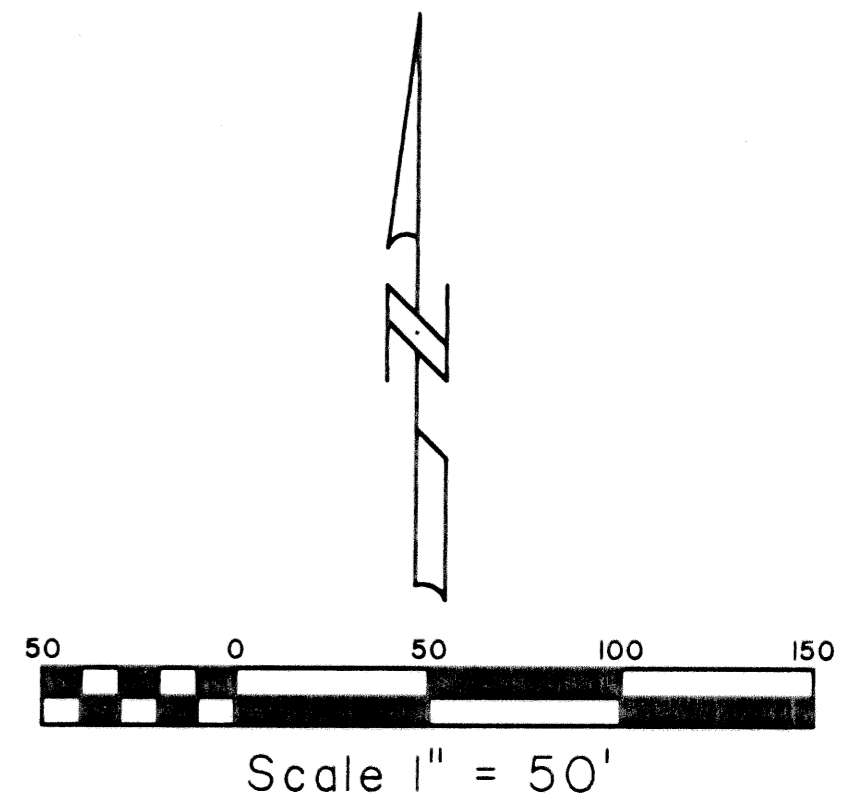
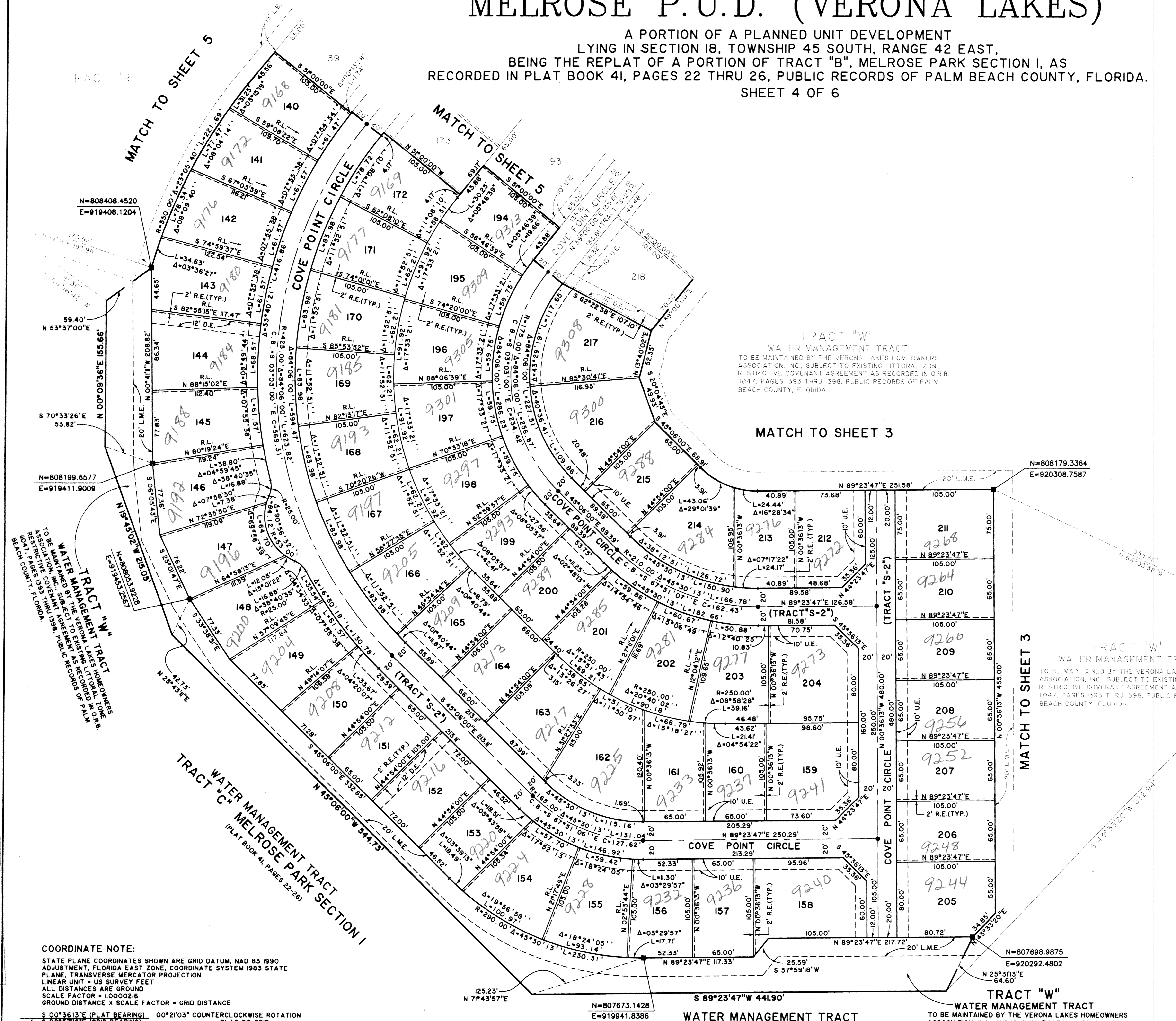
MELROSE P.U.D. (VERONA LAKES)

0255-11

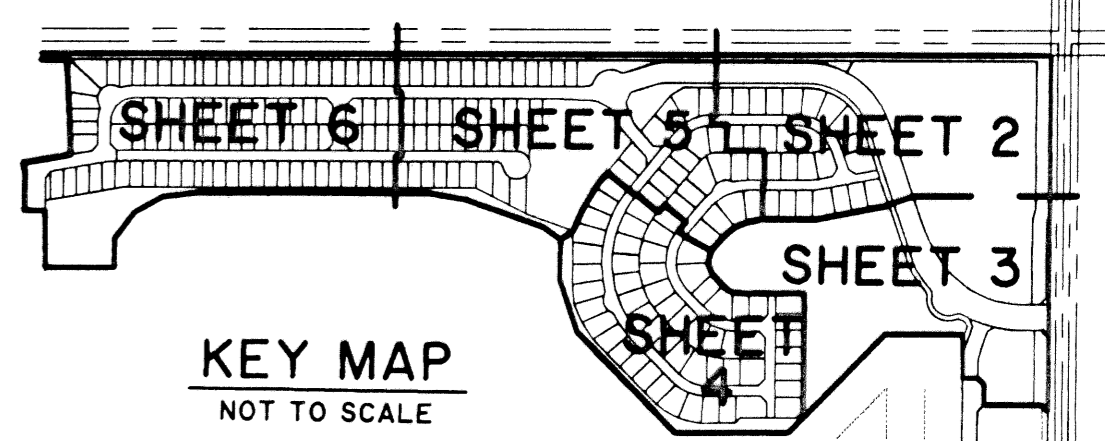
110

A PORTION OF A PLANNED UNIT DEVELOPMENT
 LYING IN SECTION 18, TOWNSHIP 45 SOUTH, RANGE 42 EAST,
 BEING THE REPLAT OF A PORTION OF TRACT "B", MELROSE PARK SECTION I, AS
 RECORDED IN PLAT BOOK 41, PAGES 22 THRU 26, PUBLIC RECORDS OF PALM BEACH COUNTY, FLORIDA.
 SHEET 4 OF 6

STATE OF FLORIDA SS
 COUNTY OF PALM BEACH
 THIS PLAT WAS FILED FOR RECORD AT _____
 _____ M. THIS _____ DAY OF _____
 AND DULY RECORDED IN PLAT BOOK NO. _____
 ON PAGE _____
 DOROTHY H. WILKEN,
 CLERK OF THE CIRCUIT COURT
 BY _____ D.C.



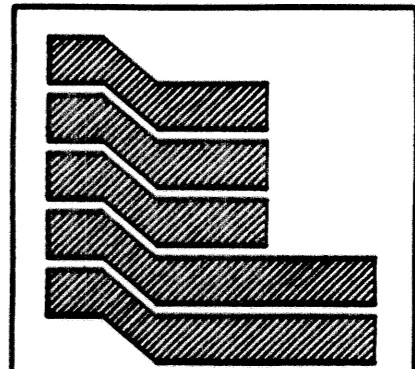
WATER MANAGEMENT TRACT
 TRACT "C" MELROSE PARK SECTION I
 (PLAT BOOK 41, PAGES 22-26)



COORDINATE NOTE:
 STATE PLANE COORDINATES SHOWN ARE GRID DATUM, NAD 83 1990
 ADJUSTMENT, FLORIDA EAST ZONE, COORDINATE SYSTEM 1983 STATE
 PLANE, TRANSVERSE MERCATOR PROJECTION
 LINEAR UNIT = US SURVEY FEET
 ALL DISTANCES ARE GROUND
 SCALE FACTOR = 1.0000216
 GROUND DISTANCE X SCALE FACTOR = GRID DISTANCE
 S 00°36'13"E (PLAT BEARING) 00°21'03" COUNTERCLOCKWISE ROTATION
 S 00°37'16"E (GRID BEARING) PLAT TO GRID

WATER MANAGEMENT TRACT
TRACT "C" MELROSE PARK SECTION I
 (PLAT BOOK 41, PAGES 22-26)

TRACT "W"
 WATER MANAGEMENT TRACT
 TO BE MAINTAINED BY THE VERONA LAKES HOMEOWNERS
 ASSOCIATION, INC., SUBJECT TO EXISTING LITTORAL ZONE
 RESTRICTIVE COVENANT AGREEMENT AS RECORDED IN O.R.B.
 11047, PAGES 1393 THRU 1398, PUBLIC RECORDS OF PALM
 BEACH COUNTY, FLORIDA.



Landmark Surveying & Mapping Inc.
 1850 Forest Hill Boulevard
 Ph. (561) 433-5405 Suite 100 W.P.B. Florida
 LB # 4396

MELROSE P.U.D. (VERONA LAKES)

SUPERVISION
 PAGES 110
 FLOOD HAZARD # 105A
 FLOOD ZONE
 ZONING V 1/3
 PLAT # 41
 ZIP CODE 33424
 SHEET 1027
 PUD NAME