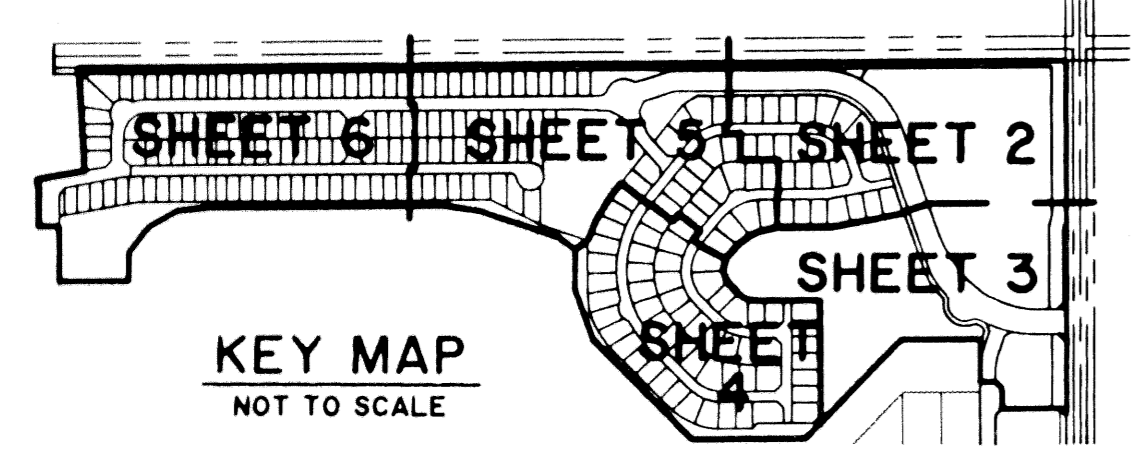


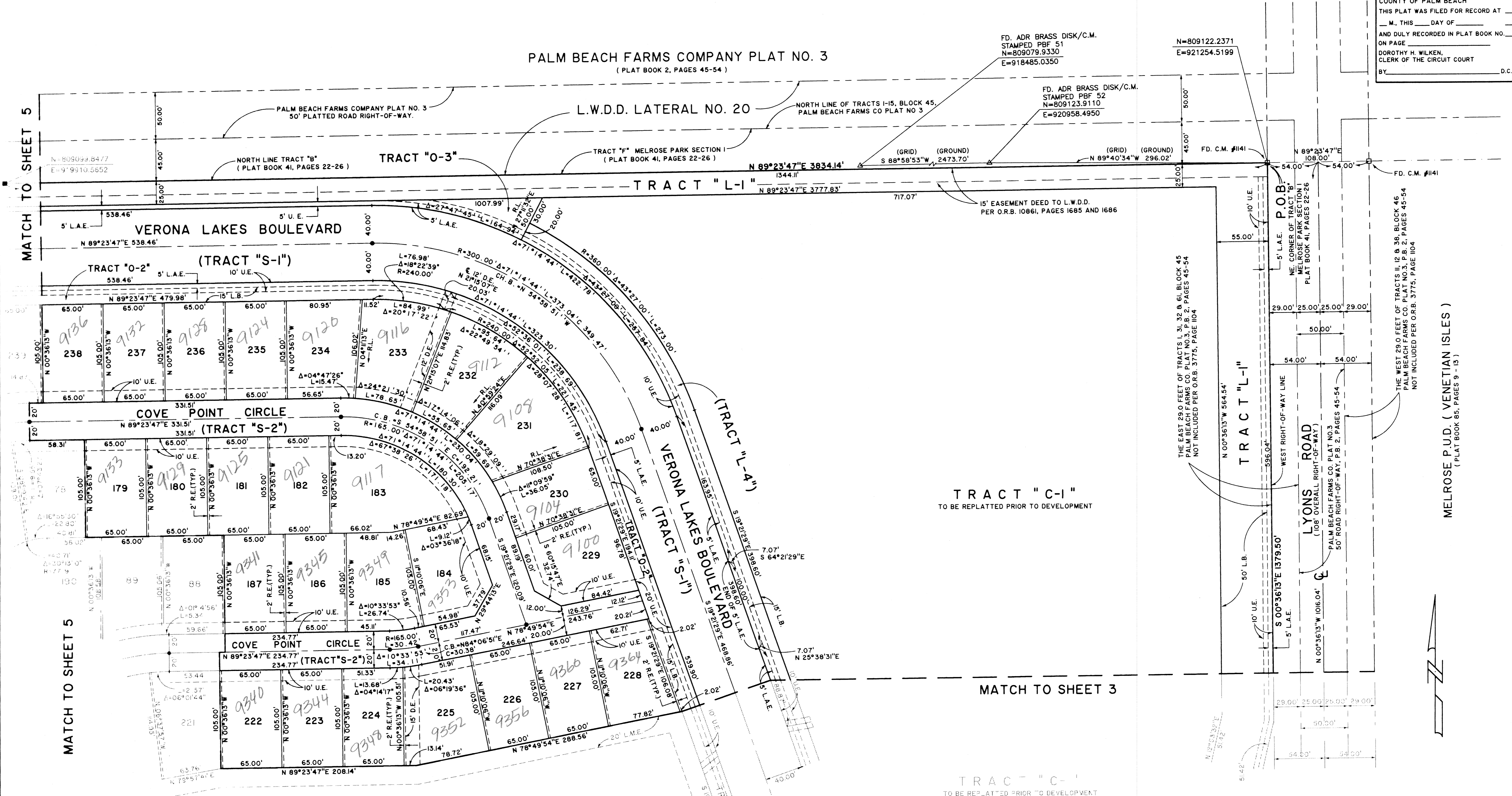
MELROSE P.U.D. (VERONA LAKES)

A PORTION OF A PLANNED UNIT DEVELOPMENT
LYING IN SECTION 18, TOWNSHIP 45 SOUTH, RANGE 42 EAST,
BEING THE REPLAT OF A PORTION OF TRACT "B", MELROSE PARK SECTION I, AS
RECORDED IN PLAT BOOK 41, PAGES 22 THRU 26, PUBLIC RECORDS OF PALM BEACH COUNTY, FLORIDA.
SHEET 2 OF 6



STATE OF FLORIDA 55
COUNTY OF PALM BEACH
THIS PLAT WAS FILED FOR RECORD AT _____
M. THIS DAY OF _____
AND DULY RECORDED IN PLAT BOOK NO. _____
ON PAGE _____
DOROTHY H. WILKEN,
CLERK OF THE CIRCUIT COURT
BY _____ D.C.

PALM BEACH FARMS COMPANY PLAT NO. 3
(PLAT BOOK 2, PAGES 45-54)



MATCH TO SHEET 5

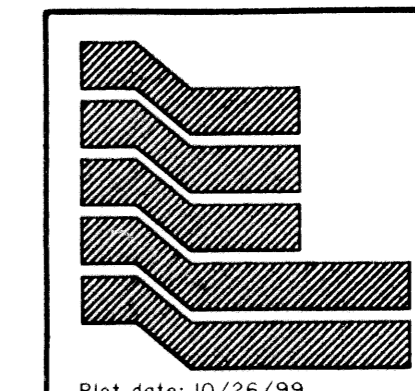
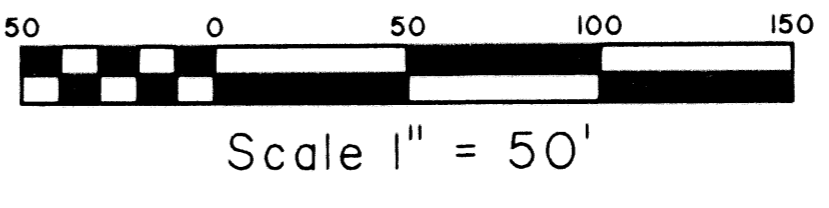
MATCH TO SHEET 5

MATCH TO SHEET 3

MATCH TO SHEET 3

COORDINATE NOTE:
STATE PLANE COORDINATES SHOWN ARE GRID DATUM, NAD 83 1990
ADJUSTMENT, FLORIDA EAST ZONE, COORDINATE SYSTEM 1983 STATE
PLANE, TRANSVERSE MERCATOR PROJECTION
LINEAR UNIT = US SURVEY FEET
ALL DISTANCES ARE GROUND
SCALE FACTOR = 1.0000216
GROUND DISTANCE X SCALE FACTOR = GRID DISTANCE
S 00°36'13"E (PLAT BEARING) 00°21'03" COUNTERCLOCKWISE ROTATION
S 00°57'16"E (GRID BEARING) PLAT TO GRID
THE WEST RIGHT-OF-WAY LINE OF LYONS ROAD

TRACT "W"
WATER MANAGEMENT TRACT
TO BE MAINTAINED BY THE VERONA LAKES HOMEOWNERS
ASSOCIATION, INC., SUBJECT TO EXISTING LITTORAL ZONE
RESTRICTIVE COVENANT AGREEMENT AS RECORDED IN O.R.B.
104-7, PAGES 393 THRU 398, PUBLIC RECORDS OF PALM
BEACH COUNTY, FLORIDA.



Landmark Surveying & Mapping Inc.
1850 Forest Hill Boulevard
Ph. (561) 433-5405 Suite 100 W.P.B. Florida
LB # 4396

MELROSE P.U.D. (VERONA LAKES)

MELROSE P.U.D. (VENETIAN ISLES)
(PLAT BOOK 85, PAGES 9-13)

SUBDIVISION: MELROSE
PAGE: 108
BLOCK: 87
PLANNED ZONE: 8
ZONING: RT15E
SE:
TAZ: /007
PUD NAME: