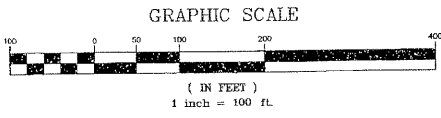
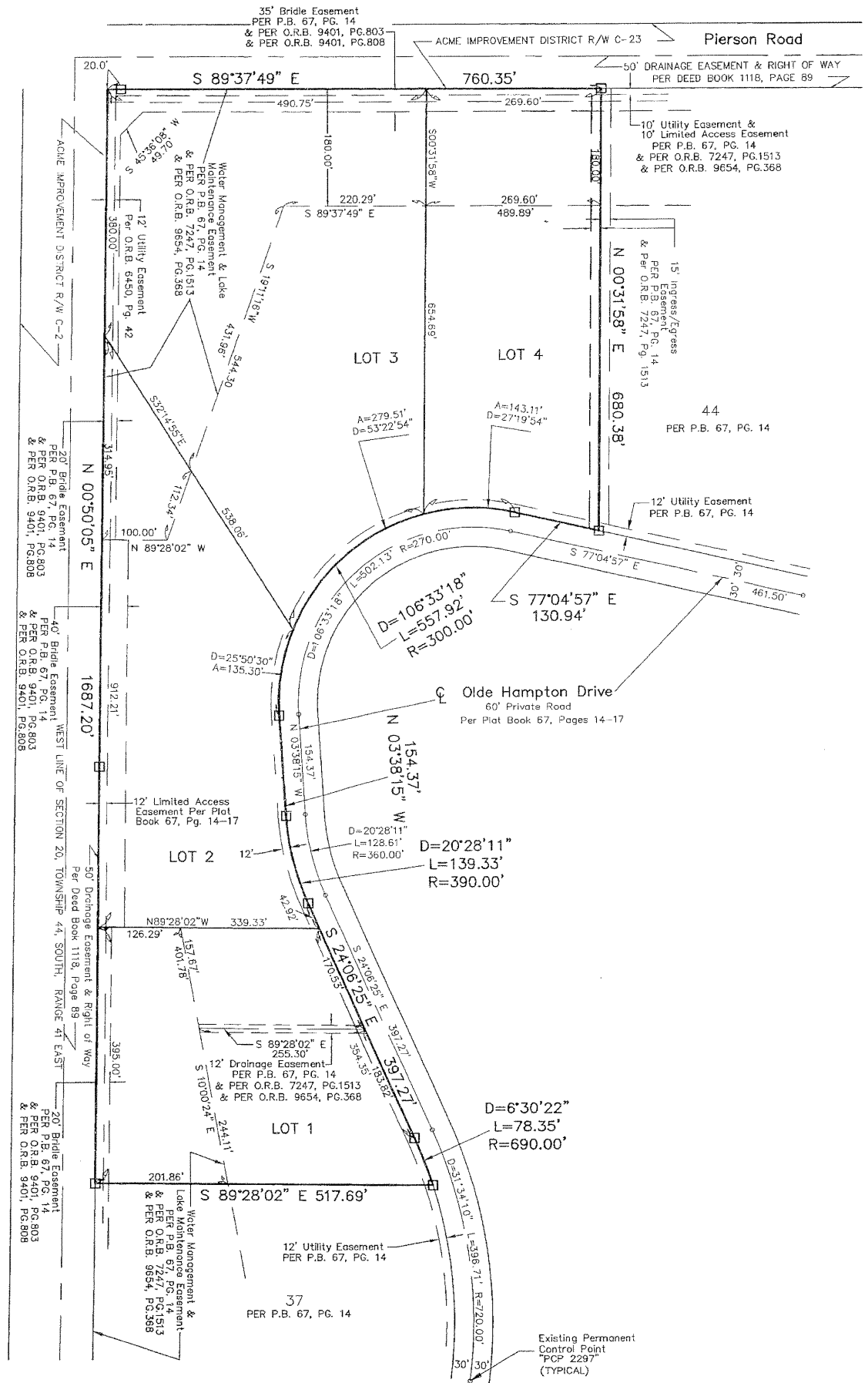


GRAND PRIX FARMS, PLAT No. 1, P.R.D., REPLAT No. 5
BEING A REPLAT OF LOTS 38 THROUGH 43, GRAND PRIX FARMS, PLAT No. 1, P.R.D.
AS RECORDED IN PLAT BOOK 67, PAGES 14 THROUGH 17 OF
THE PUBLIC RECORDS OF PALM BEACH COUNTY, FLORIDA
LYING IN THE WEST ONE HALF OF SECTION 20, TOWNSHIP 44 SOUTH, RANGE 41 EAST,
VILLAGE OF WELLINGTON, PALM BEACH COUNTY, FLORIDA
SHEET 2 OF 2 SHEETS
OCTOBER 1999

76

STATE OF FLORIDA
 COUNTY OF PALM BEACH
 THIS PLAT WAS FILED FOR
 RECORD AT _____ M.
 THIS _____ DAY OF _____
 A.D. _____ AND DULY
 RECORDED IN PLAT BOOK
 _____ ON PAGES _____
 AND _____
 DOROTHY H. WILKEN
 CLERK CIRCUIT COURT
 BY: _____
 DEPUTY CLERK



- Legend**
- = Permanent Reference Monument "PRM 4318"
 - o = Existing Permanent Control Point "PCP 2297"
 - L = Arc Length
 - D = Delta (Central Angle)
 - R = Radius
 - R/W = Right of Way
 - P.B. = Plat Book
 - O.R.B. = Official Record Book
 - Pg = Page
 - ℄ = Centerline

GRAND PRIX FARMS PLAT No. 1, P.R.D., REPLAT No. 5	
	NICK MILLER, INC. Surveying & Mapping Consultants
SHEET NO. 2 OF 2	SCALE: 1" = 100' DATE: OCTOBER 1999 JOB NO. 97062A FILE: 97062A-1.2
SUITE 105 2550 RCA BLVD. PALM BEACH GARDENS, FLORIDA 33410 TEL 561 627-5200 FAX 561 627-0983 D.B.P.R. LICENSED BUSINESS No. 4318	