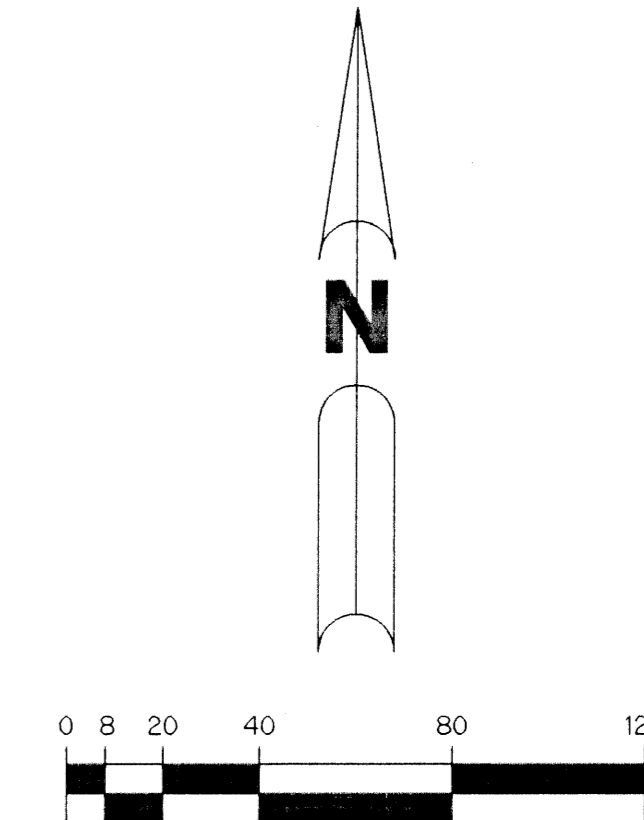


VALENCIA ISLES - PLAT THREE

BEING A REPLAT OF A PORTION OF TRACT "Q" ACCORDING TO THE PLAT OF VALENCIA ISLES - PLAT ONE, AS RECORDED IN PLAT BOOK 84, PAGES 3 THROUGH 17, INCLUSIVE, AND ALL OF TRACT "BT10" ACCORDING TO THE PLAT OF VALENCIA ISLES - PLAT TWO, AS RECORDED IN PLAT BOOK 84, PAGES 99 THROUGH 106, INCLUSIVE, ALL OF THE PUBLIC RECORDS OF PALM BEACH COUNTY, FLORIDA. LYING IN SECTION 33, TOWNSHIP 45 SOUTH, RANGE 42 EAST.

SHEET 3 OF 12 AUGUST, 1999

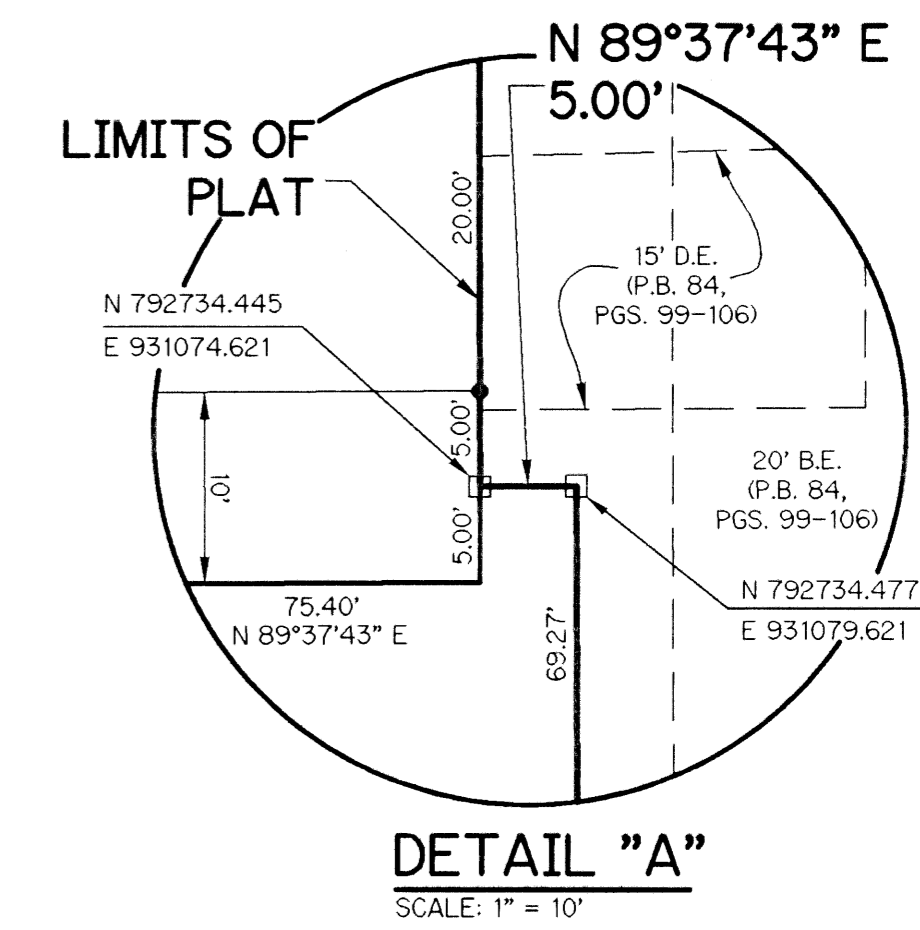
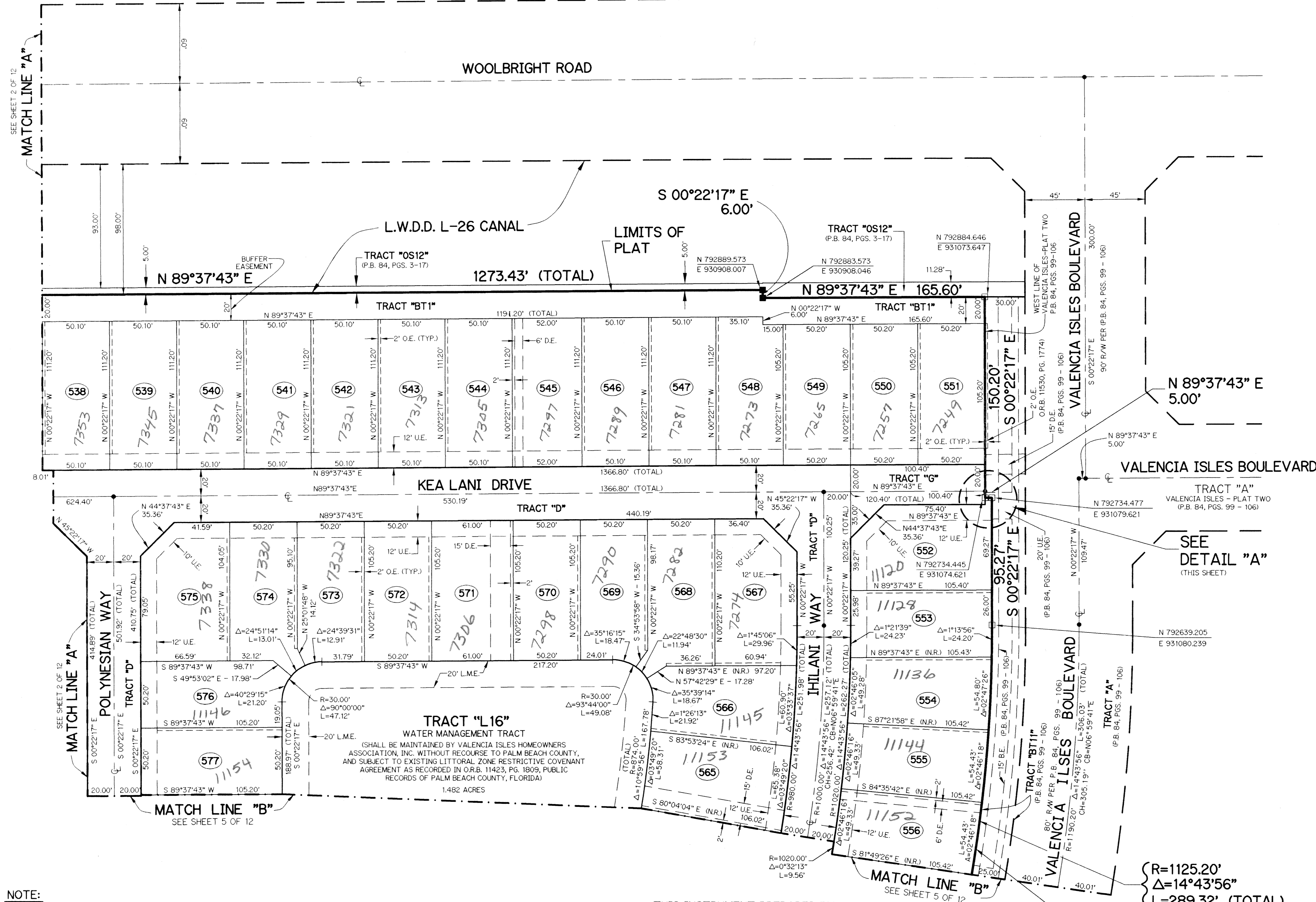


SCALE: 1" = 40'

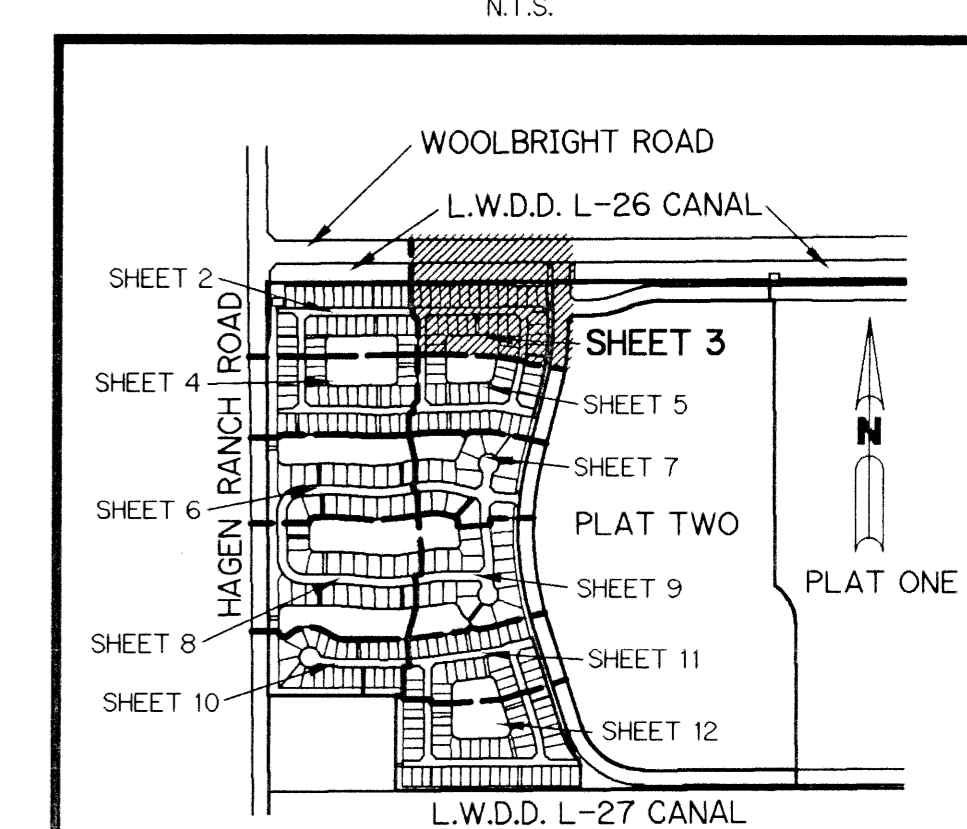
LEGEND:

- - SET PERMANENT REFERENCE MONUMENT, PSM #4213
- - FOUND PERMANENT REFERENCE MONUMENT, PSM #4213
- - PERMANENT CONTROL POINT, PSM #4213
- Δ - DELTA ANGLE
- B.E. - BUFFER EASEMENT
- CB - CHORD BEARING
- CH - CHORD DISTANCE
- C.L. - CENTER LINE
- D.B. - DEED BOOK
- D.E. - DRAINAGE EASEMENT
- L - ARC LENGTH
- L.A.E. - LIMITED ACCESS EASEMENT
- L.M.A.E. - LAKE MAINTENANCE ACCESS EASEMENT
- L.M.E. - LAKE MAINTENANCE EASEMENT
- L.W.D.D. - LAKE WORTH DRAINAGE DISTRICT
- N.R. - NOT RADIAL
- N.T.S. - NOT TO SCALE
- O.E. - OVERHANG EASEMENT
- O.R.B. - OFFICIAL RECORD BOOK
- P.B. - PLAT BOOK
- P.G.S. - PAGES
- P.S.M. - PROFESSIONAL SURVEYOR AND MAPPER
- R - RADIUS
- RAD. - RADIAL
- R/W - RIGHT-OF-WAY
- S.D.E. - SWALE DRAINAGE EASEMENT
- S.T. - SURVEY TIE
- U.E. - UTILITY EASEMENT
- V.I.-1 - VALENCIA ISLES - PLAT ONE PER P.B. 84, PGS. 3-17

N 737648.0171 - DENOTES STATE PLANE COORDINATES
E 905258.2326



KEY MAP



Subdivision: Valencia Isles
Book: 87
Page: 65
Flood Zone: A#
Zoning: FUD
Quad: #50
SE: 9-7-74
TAZ: 452
PUD Name: Milin Farms

THIS INSTRUMENT PREPARED BY
PERRY C. WHITE, P.S.M. 4213, STATE OF FLORIDA
LAWSON, NOBLE AND WEBB, INC.
ENGINEERS PLANNERS SURVEYORS
420 COLUMBIA DRIVE
WEST PALM BEACH, FLORIDA 33407
LB-6674