

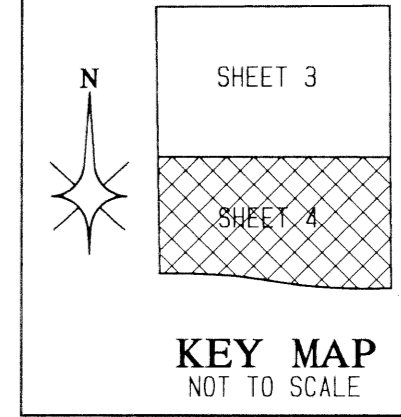
LOWES SHOPPING CENTER - M.U.P.D.

SITUATE IN THE SOUTHWEST ONE-QUARTER OF SECTION 19, TOWNSHIP 47 SOUTH, RANGE 42 EAST, PALM BEACH COUNTY, FLORIDA. BEING A REPLAT OF TRACT 98 AND A PORTION OF TRACT 99, BLOCK 78, PALM BEACH FARMS COMPANY PLAT NO. 3, AS RECORDED IN PLAT BOOK 2, PAGES 45 THROUGH 54 OF THE PUBLIC RECORDS OF PALM BEACH COUNTY, FLORIDA.

SHEET 4 OF 4

DECEMBER, 1999

MATCH LINE SEE SHEET 3 OF 4



55

STATE OF FLORIDA } SS
COUNTY OF PALM BEACH }
THIS PLAT WAS FILED FOR
RECORD AT _____ DAY OF
THIS _____ AD _____ AND
DULY RECORDED IN PLAT BOOK
_____ ON PAGES _____ AND
DOROTHY H. WILKEN, CLERK
CIRCUIT COURT
BY: _____ DC

STATE ROAD No. 7 (U.S. 441)

L.W.D.D. CANAL "E-1"

N00°53'46"W 1111.29'

25' ROAD & CANAL RESERVATION
(P.B. 2, PGS 45-54)
(O.R.B. 1585, PG. 505)

LAKE MOUTH DAMAGE DISTRICT
(O.R.B. 1556 PG. 7367)

N733663.059
E917224.915

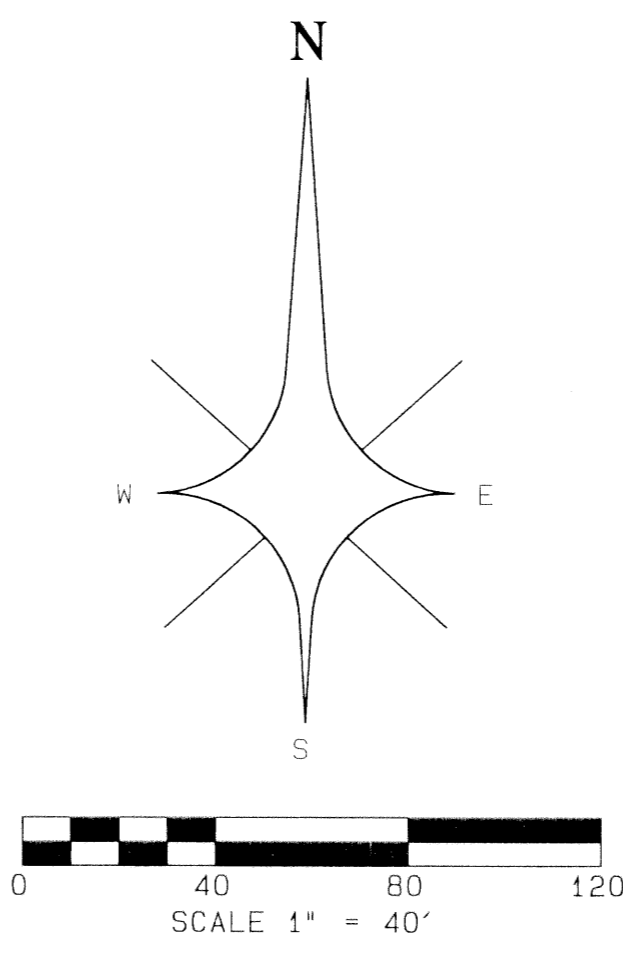
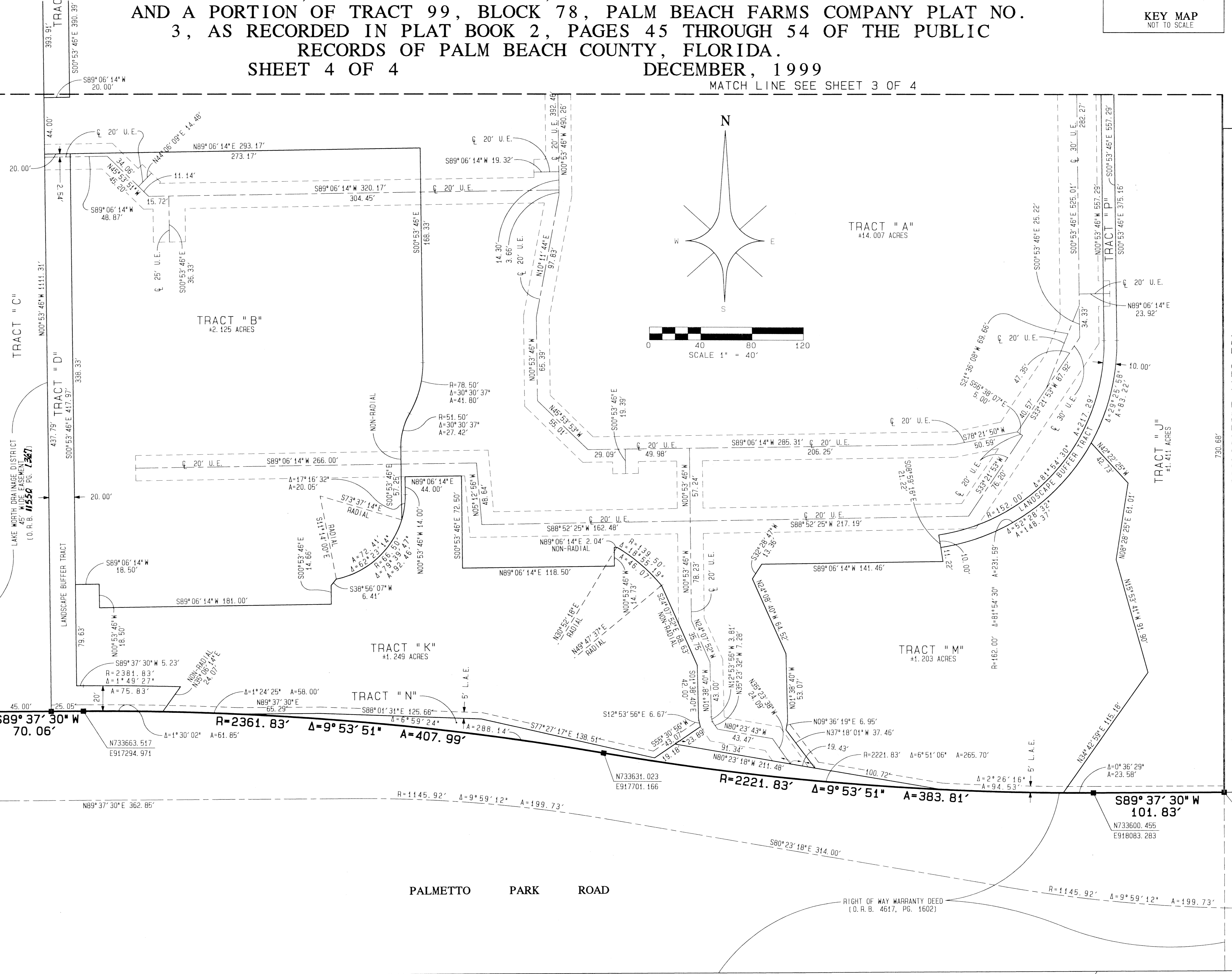
N733663.517
E917294.971

N733601.121
E918185.115

S.W. CORNER OF TRACT 99, BLOCK 78
PALM BEACH FARMS CO. PLAT NO. 3
(PLAT BOOK 2, PAGES 45-54)

Lowes Shopping Center
PAGE 55
FLOOD MAP # 3308
ZONING 14A/PO
ZIP CODE 33433
TAX 883
FUD NAME Lowes Shopping Center

POINT OF COMMENCEMENT
S.W. CORNER OF SECTION 19,
TOWNSHIP 47 SOUTH, RANGE 42 EAST



50' RESERVATION
(P.B. 2, PGS. 45-54)

ATLANTIC - CARIBBEAN MAPPING, INC.
3062 JOG ROAD - GREENACRES, FLORIDA 33467
(561) 964-7884; FAX (561) 964-1969

PROFESSIONAL
SURVEYORS
AND MAPPERS
1B4820

PALMETTO PARK WOODS
(PLAT BOOK 62, PAGES 96-97)