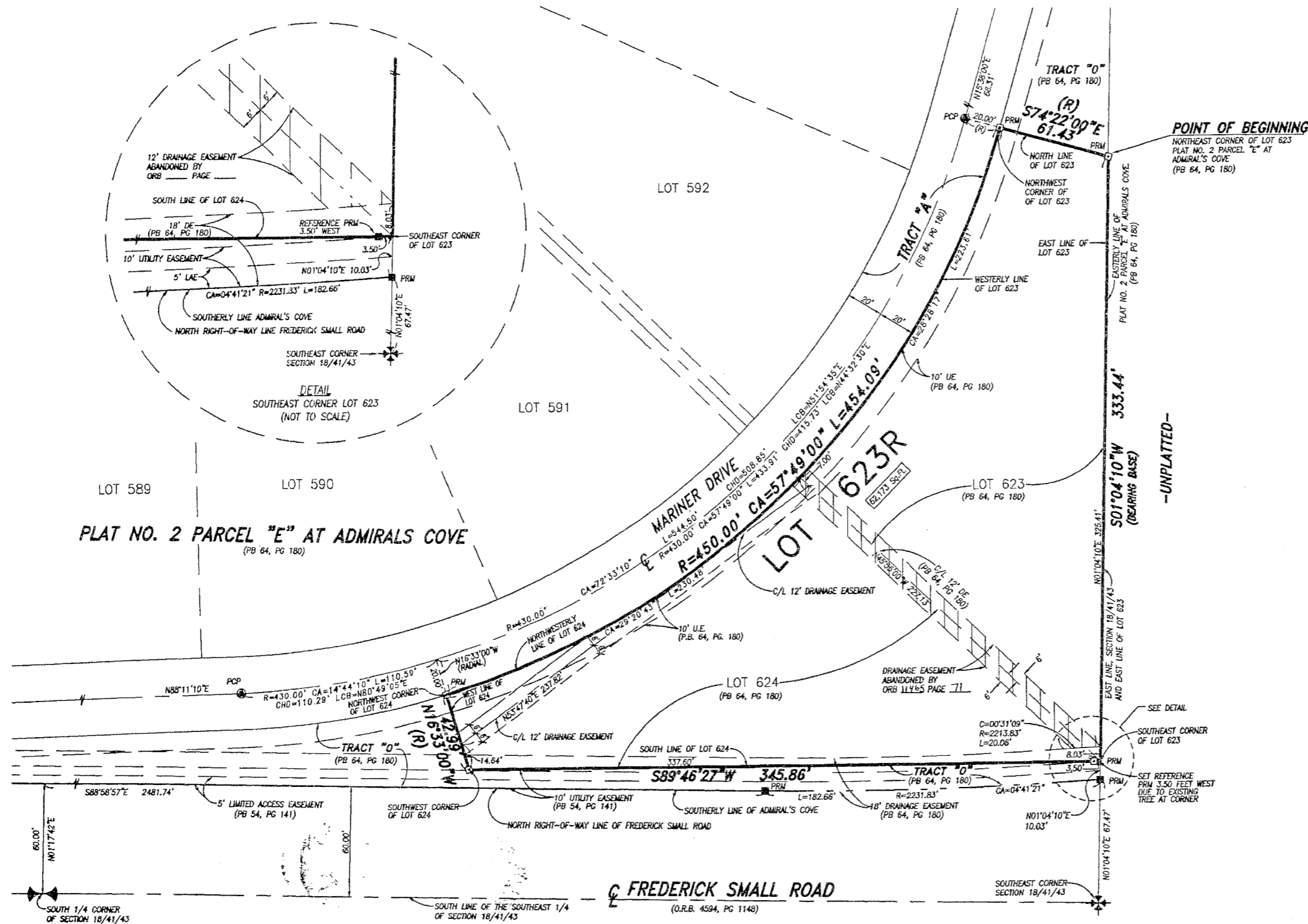


ADMIRAL'S COVE REPLAT OF LOTS 623 AND 624

BEING A REPLAT OF LOTS 623 AND 624, PLAT NO. 2 PARCEL "E" AT ADMIRALS COVE, RECORDED IN PLAT BOOK 64, PAGE 180, PUBLIC RECORDS, PALM BEACH COUNTY, AND LYING IN SECTION 18, TOWNSHIP 41 SOUTH, RANGE 43 EAST, TOWN OF JUPITER, PALM BEACH COUNTY, FLORIDA



BENCH MARK LAND SURVEYING & MAPPING, INC.
 4152 W. BLUE HERON BOULEVARD • SUITE 121
 RIVIERA BEACH • FLORIDA 33404
 PHONE: (561) 848-2102 • L.B. 2171 • FAX: (561) 844-9859
 EMAIL: bmsm@aol.com WEB: http://members.aol.com/bmsm

RECORD PLAT
ADMIRAL'S COVE
REPLAT OF LOTS 623 AND 624

DWN: MKH FB: DATE: 10/01/99 WOF: PB7.623.1
 CKD: FILE: PB7-623R.DWG SCALE: 1" = 30' SHEET 2 OF 2