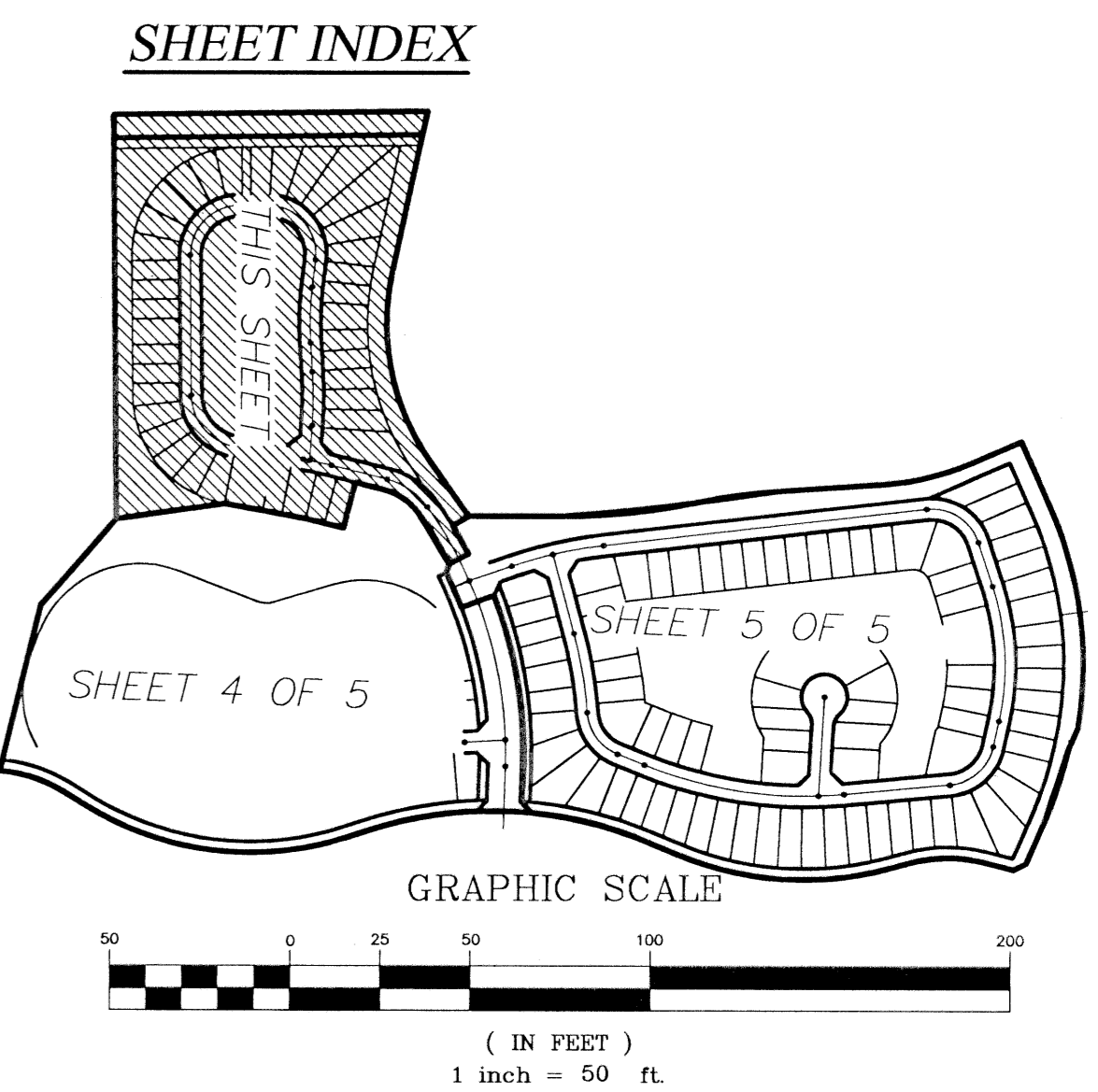
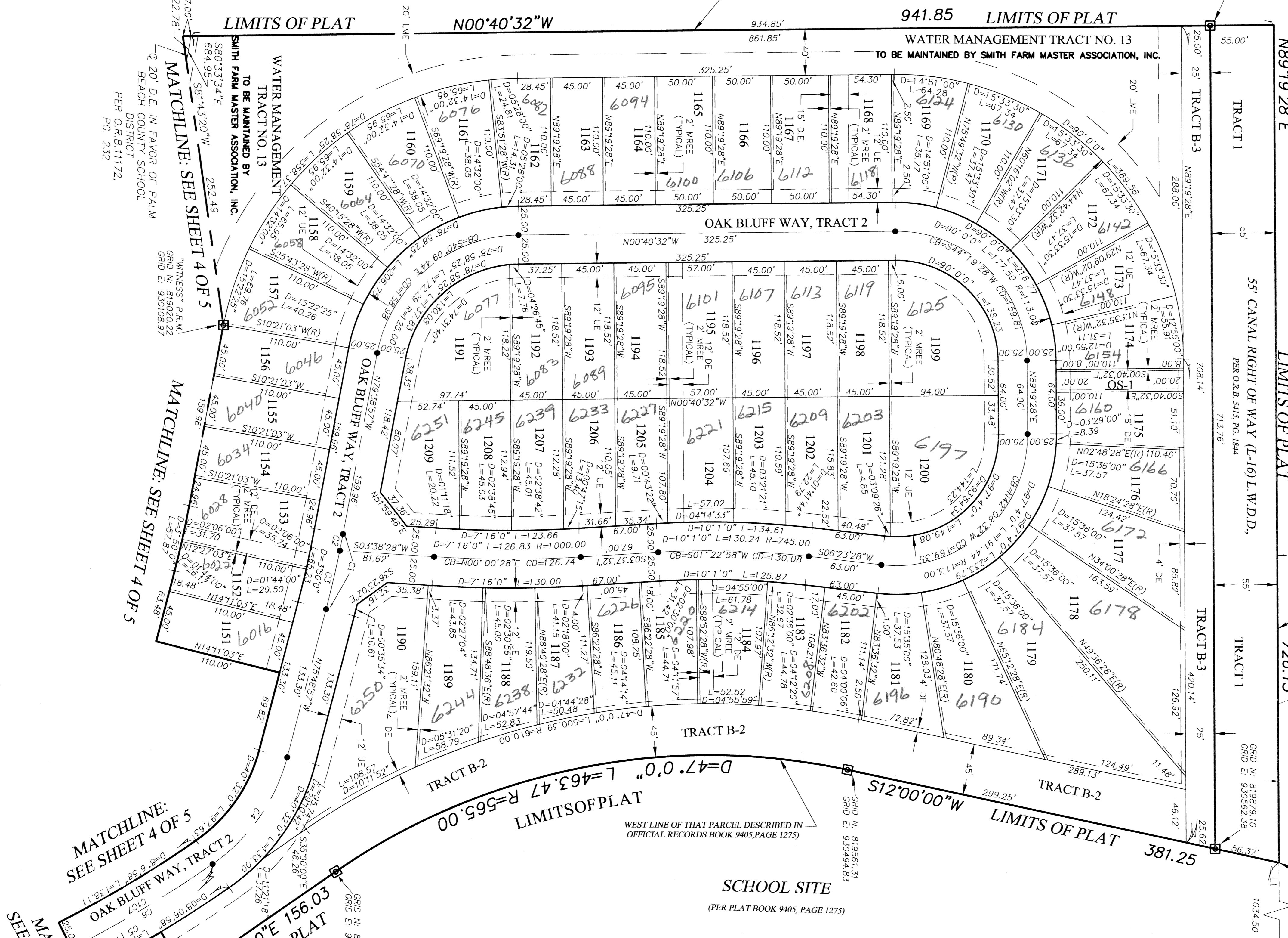
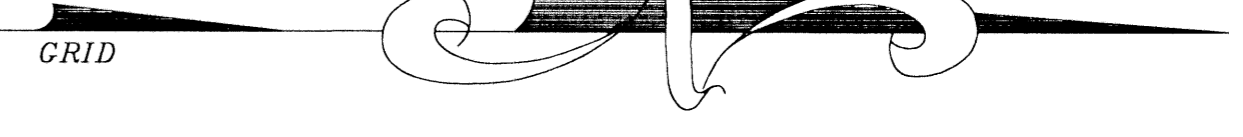


SMITH DAIRY WEST P.U.D.-PLAT No. 10  
BEING A REPLAT OF PART OF BLOCKS 38 AND 39 OF PALM BEACH FARMS  
COMPANY PLAT No. 3, AS RECORDED IN PLAT BOOK 2, PAGES  
45 THROUGH 54 OF THE PUBLIC RECORDS OF PALM BEACH COUNTY, FLORIDA  
IN PART OF SECTION 4, TOWNSHIP 45 SOUTH, RANGE 42 EAST,  
PALM BEACH COUNTY, FLORIDA  
SHEET 3 OF 5  
OCTOBER 1998

SMITH DAIRY WEST P.U.D. - PLAT No. 8  
(PER PLT BOOK 83, PAGES 171-177)

0653-016



**CURVE TABLE**

CURVE	CENTRAL ANGLE	LENGTH	RADIUS	CHORD BEARING	CHORD DISTANCE
C1	03°50'00"	66.90	1000.00	N77°43'57"W	66.89
C5	36°51'37"	643.33	1000.00	N16°51'08"W	632.30
C2	00°50'33"	14.71	1000.00	N79°13'40"W	14.71
C3	02°59'27"	52.20	1000.00	N77°18'40"W	52.19
C4	40°32'00"	115.31	163.00	N55°32'57"W	112.92
C6	11°20'15"	197.88	1000.00	N29°36'29"E	197.56
C7	33°22'26"	582.48	1000.00	N12°55'36"W	382.24

- LEGEND:**
- PERMANENT REFERENCE MONUMENT "P.R.S. 4828"
  - PERMANENT CONTROL POINT "P.C.P. 4828"
  - RADIUS
  - ARC LENGTH
  - DELTA (CENTRAL ANGLE)
  - POINT OF CURVATURE
  - CHORD BEARING
  - CHORD DISTANCE
  - ANNEXED UNIT DEVELOPMENT
  - PROFESSIONAL SURVEYOR & MAPPER
  - PROFESSIONAL LAND SURVEYOR
  - UTILITY EASEMENT
  - DRAINAGE EASEMENT
  - LAKE MAINTENANCE EASEMENT
  - NORTHING (GRID)
  - EASTING (GRID)
  - CALCULATED
  - RADIAL
  - LIMITED ACCESS EASEMENT
  - LAE
  - MREE
  - MAINTENANCE ROOF EAVE EASEMENT
  - POINT OF BEGINNING
  - P.O.B.
  - OFFICIAL RECORDS BOOK
  - PAGE

Smith Dairy West Plat #10  
 806  
 179  
 B  
 49  
 Smith Dairy West

SCALE: 1"=50'  
 DATE: OCT. 1998  
**NICK MILLER, INC.**  
 Surveying & Mapping Consultants  
 SMITH DAIRY WEST P.U.D. - PLAT No 10  
 2560 RCA Blvd. Suite 105  
 Palm Beach Gardens, Florida 33410  
 (561) 627-5200  
 D.B.P.R. Business License No. 4318  
 DRAWING NUMBER  
 94014FT

MATCHLINE: SEE SHEET 4 OF 5  
 MATCHLINE: SEE SHEET 5 OF 5  
 MATCHLINE: SEE SHEET 4 OF 5  
 MATCHLINE: SEE SHEET 5 OF 5

P.O.B.  
 NORTHWEST CORNER OF THAT PARCEL DESCRIBED IN OFFICIAL RECORDS BOOK 9450, PAGE 1275

P.O.C.  
 NORTHEAST CORNER OF SECTION 4, TOWNSHIP 45 SOUTH, RANGE 42 EAST, PALM BEACH COUNTY, FLORIDA POSITION (BY CALCULATION)