

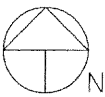
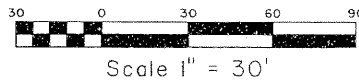
FORTE ESTATES

BEING A REPLAT OF A PORTION OF LOTS 8 AND 9,
BLOCK 7, OF THE AMENDED PLAT OF FLA-MANGO GROVELETS,
AS RECORDED IN PLAT BOOK 21, PAGE 88,
PUBLIC RECORDS OF PALM BEACH COUNTY, FLORIDA
LYING IN SECTION 8, TOWNSHIP 44 SOUTH, RANGE 43 EAST,
PALM BEACH COUNTY, FLORIDA.

160

STATE OF FLORIDA
COUNTY OF PALM BEACH
THIS PLAT WAS FILED FOR RECORD AT _____
M. THIS _____ DAY OF _____ 19____
AND DULY RECORDED IN PLAT BOOK NO. _____
ON PAGE _____
DOROTHY H. WILKEN, CLERK OF THE CIRCUIT COURT
BY _____ D.C.

SHEET 2 OF 2
OCTOBER, 1999



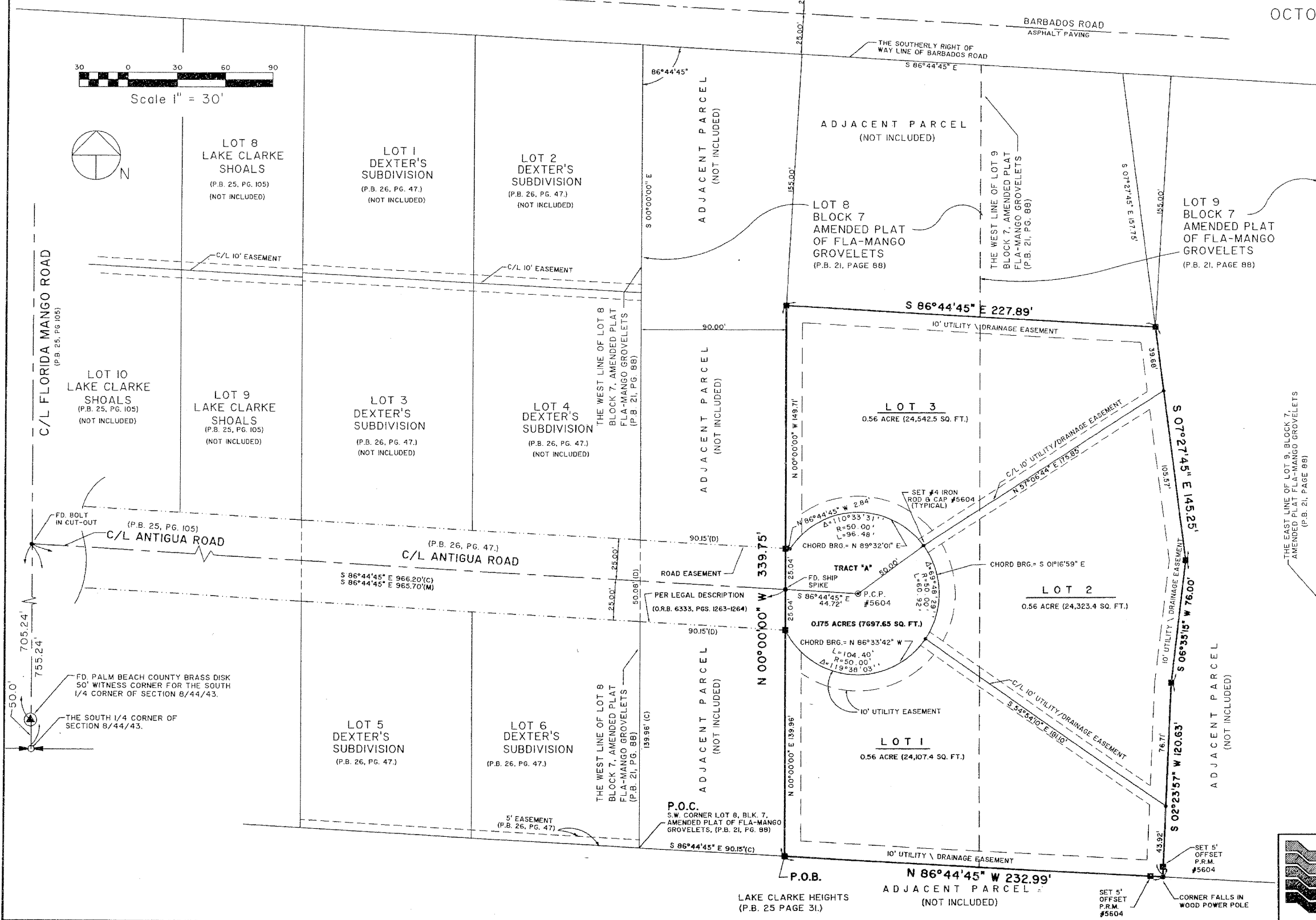
LEGEND

- P.C.P. = PERMANENT CONTROL POINT
- P.R.M. = PERMANENT REFERENCE MONUMENT
- I.R. & C. = IRON ROD & CAP
- I.P. = IRON PIPE (NO NUMBER)
- C.M. = CONCRETE MONUMENT
- P.K. = SURVEY NAIL
- N. & T.T. = NAIL & TIN TAB
- P.C. = POINT OF CURVATURE
- P.T. = POINT OF TANGENCY
- P.C.C. = POINT OF COMPOUND CURVATURE
- P.R.C. = POINT OF REVERSED CURVATURE
- P.I. = POINT OF INTERSECTION
- C. = CALCULATED
- M. = MEASURED
- P. = PLAT
- FND. = FOUND
- CONC. = CONCRETE
- R/W = RIGHT OF WAY
- C.L. = CENTERLINE
- PL. = PROPERTY LINE
- PROP. = PROPOSED
- U.E. = UTILITY EASEMENT
- D.E. = DRAINAGE EASEMENT
- L.A.E. = LIMITED ACCESS EASEMENT
- R. = RADIUS
- L. = ARC LENGTH
- Δ = CURVE DELTA
- F.H. = FIRE HYDRANT
- M.E. = MAINTENANCE EASEMENT
- S/W = SIDEWALK
- ASPH. = ASPHALT
- P.O.B. = POINT OF BEGINNING
- P.O.C. = POINT OF COMMENCEMENT
- D. = DESCRIPTION
- BRG. = BEARING
- P.B. = PLAT BOOK

ACREAGE TABULATION

LOT 1	0.553 ACRE (24,107.4 SQ. FT.)
LOT 2	0.556 ACRE (24,323.4 SQ. FT.)
LOT 3	0.563 ACRE (24,542.5 SQ. FT.)
TRACT "A"	0.176 ACRE (7,697.65 SQ. FT.)
TOTAL	1.85 AC.

SHEET 2 OF 2



P.O.B. N 86°44'45" W 232.99'
LAKE CLARKE HEIGHTS (P.B. 25 PAGE 31.) ADJACENT PARCEL (NOT INCLUDED)

Landmark Surveying & Mapping Inc.
1850 Forest Hill Boulevard
Ph. (561) 433-5405 Suite 100 W.P.B. Florida
L.B. #4396

FORTE ESTATES