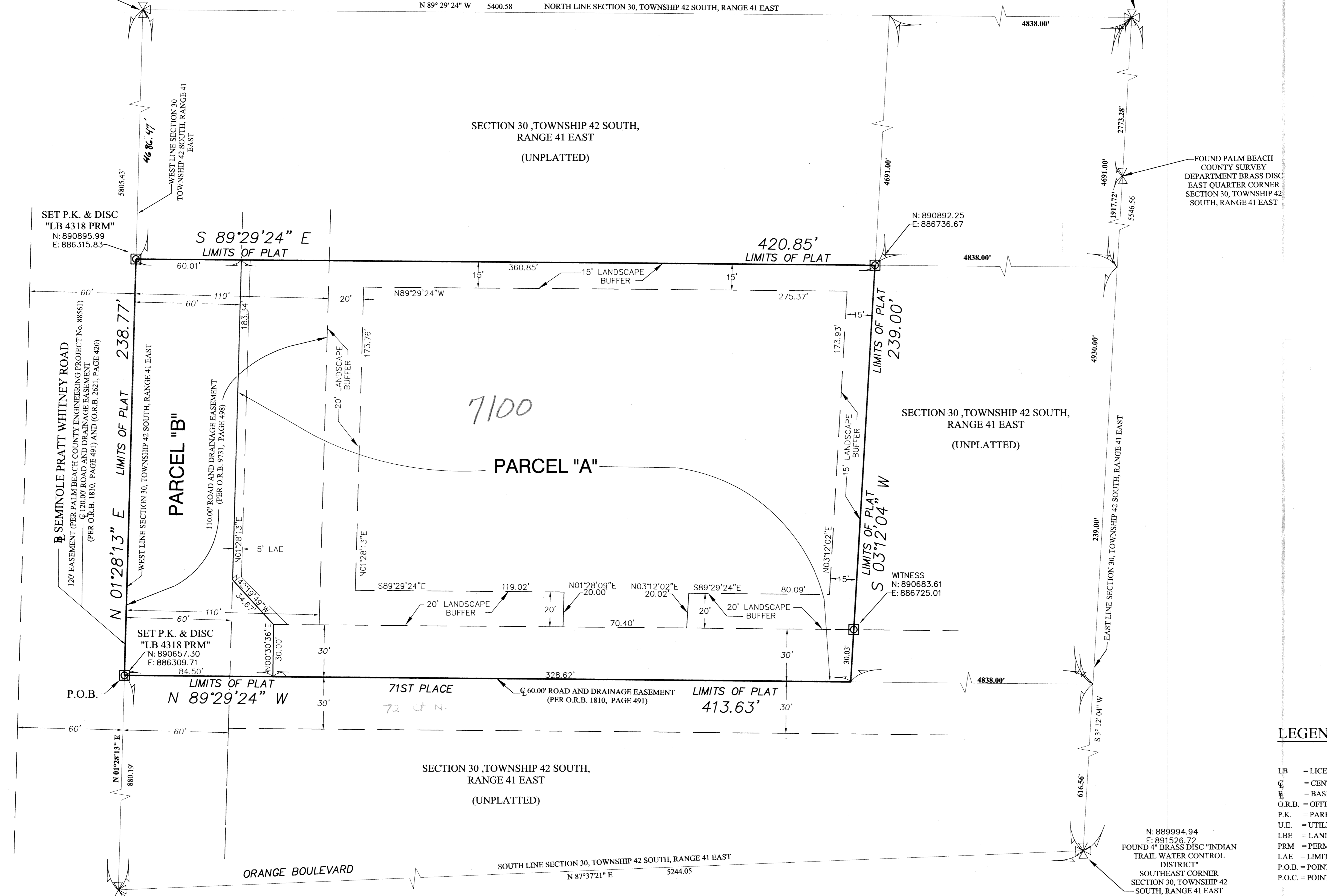


SEMINOLE PRATT /71ST PLACE FIRE RESCUE STATION
BEING A PARCEL OF LAND LYING IN SECTION 30,
TOWNSHIP 42 SOUTH, RANGE 41 EAST,
PALM BEACH COUNTY, FLORIDA
APRIL 1999
SHEET 2 OF 2

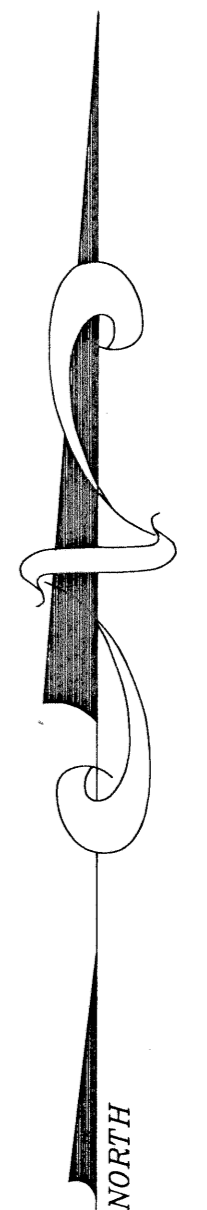
54-87-000

FOUND P.K. WITH DISC
"LB 5032"
NORTHWEST CORNER
SECTION 30, TOWNSHIP 42
SOUTH, RANGE 41 EAST

FOUND NAIL AND TIN TAG
NORTHEAST CORNER
SECTION 30, TOWNSHIP 42 SOUTH, RANGE 41 EAST



FOUND PALM BEACH
COUNTY SURVEY
DEPARTMENT BRASS DISC
EAST QUARTER CORNER
SECTION 30, TOWNSHIP 42
SOUTH, RANGE 41 EAST

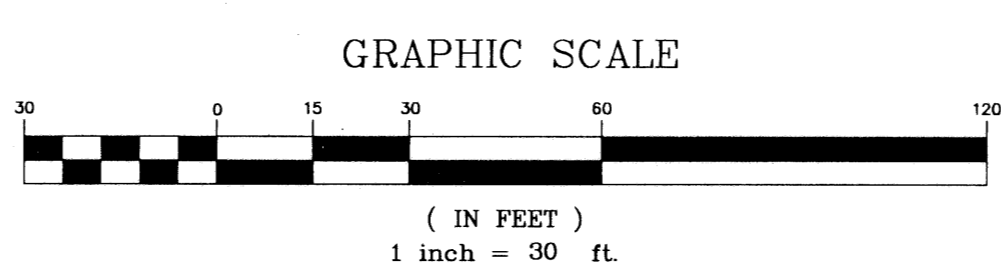


LEGEND:

- LB = LICENSED BUSINESS
- C = CENTERLINE
- B = BASELINE
- O.R.B. = OFFICIAL RECORDS BOOK
- P.K. = PARKER AND KALON NAIL
- U.E. = UTILITY EASEMENT
- LBE = LANDSCAPE BUFFER EASEMENT
- PRM = PERMANENT REFERENCE MONUMENT
- LAE = LIMITED ACCESS EASEMENT
- P.O.B. = POINT OF BEGINNING
- P.O.C. = POINT OF COMMENCEMENT

N: 889994.94
E: 891526.72
FOUND 4" BRASS DISC "INDIAN
TRAIL WATER CONTROL
DISTRICT"
SOUTHEAST CORNER
SECTION 30, TOWNSHIP 42
SOUTH, RANGE 41 EAST

N: 889777.40
E: 886287.13
P.O.C.
FOUND P.K. AND DISC
"LB 4318"
SOUTH WEST CORNER
SECTION 30, TOWNSHIP 42
SOUTH, RANGE 41 EAST



71st Pl Fire Rescue
Station
PAGE 714
FLOOD MAP # 50B
ZONING PO100Z
SUA# 74
SE 98-44
LAE 847
SUBDIVISION
PROJECT NO
SHEET NO
DATE
JOB NAME

SEMINOLE PRATT / 71ST PLACE FIRE RESCUE STATION		
	NICK MILLER, INC. <i>Surveying & Mapping Consultants</i>	
	SUITE 105 2560 RCA BLVD. PALM BEACH GARDENS, FLORIDA 33410 TEL 561 627-5200 FAX 561 627-0983 D.B.P.R. LICENSED BUSINESS No. 4318	
SHEET NO. 2 OF 2	SCALE: 1"=30' DATE: APRIL 1999 JOB NO. 98036C FILE: 98036C-2.DWG	