

THE LOXAHATCHEE CLUB AT MAPLEWOOD PLAT No.1A OF PHASE II

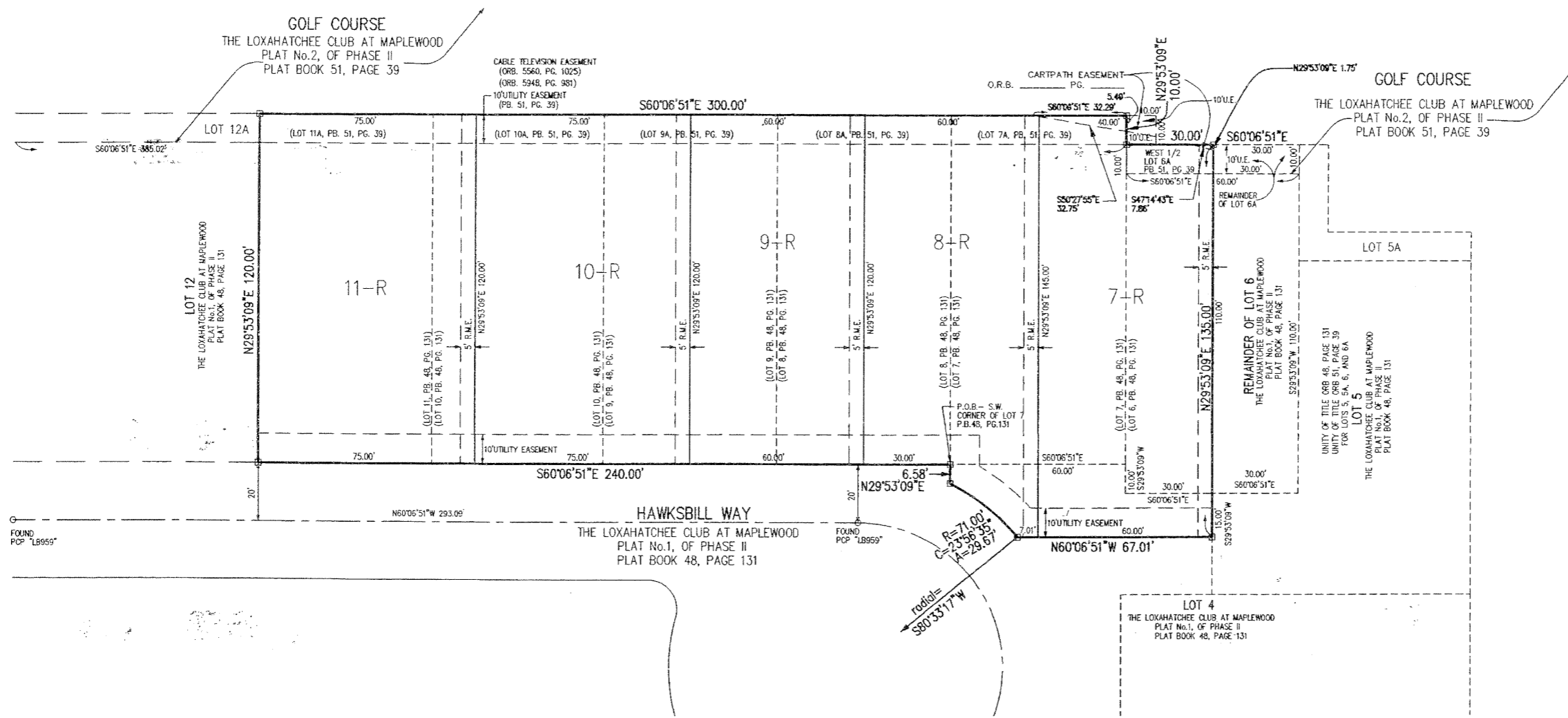
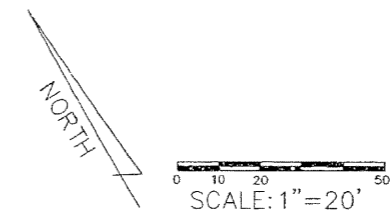
LYING IN SECTION 11, TOWNSHIP 41 SOUTH, RANGE 42 EAST,
TOWN OF JUPITER, PALM BEACH COUNTY, FLORIDA, BEING

A REPLAT OF LOTS 7 THROUGH 11, THE WEST ONE-HALF OF LOT 6, AND A PORTION
OF HAWKSBILL WAY THE LOXAHATCHEE CLUB AT MAPLEWOOD, PLAT No. 1, OF PHASE II,
RECORDED IN PLAT BOOK 48, PAGES 131 THROUGH 134, AND A REPLAT OF LOTS 7A
THROUGH 11A, AND THE WEST ONE-HALF OF LOT 6A, OF THE LOXAHATCHEE CLUB
AT MAPLEWOOD, PLAT No.2, OF PHASE II, RECORDED IN PLAT BOOK 51, PAGE 39
OF THE PUBLIC RECORDS OF PALM BEACH COUNTY, FLORIDA.

JULY 1999

SHEET 2 OF 2

110



THIS INSTRUMENT WAS PREPARED BY
ROBERT P. BLASZYK IN THE OFFICES OF
MESSLER & ASSOCIATES
11211 PROSPERITY FARMS ROAD
SUITE C301
PALM BEACH GARDENS, FLORIDA

Messler & Associates
CONSULTING ENGINEERS - LB3618
11211 Prosperity Farms Road, Suite C-301, Palm Beach Gardens, Florida 33410
Phone (561) 627-2226 Fax (561) 624-1569