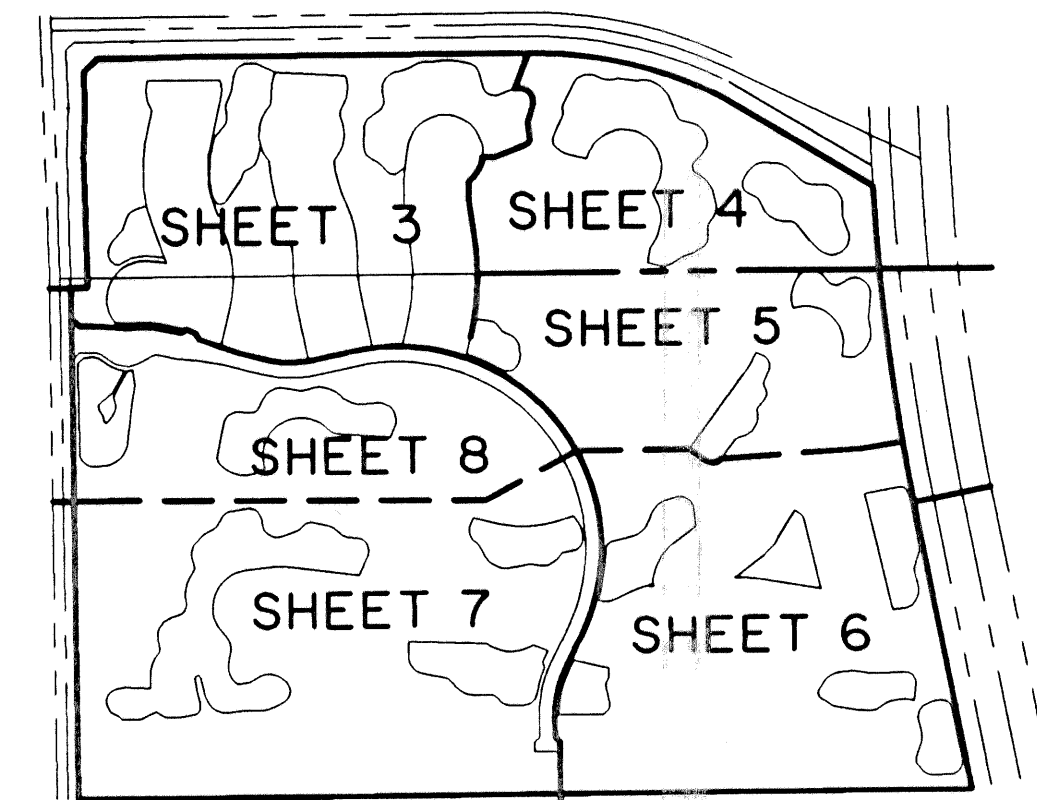


DELRAY TRAINING CENTER-PLAT ONE

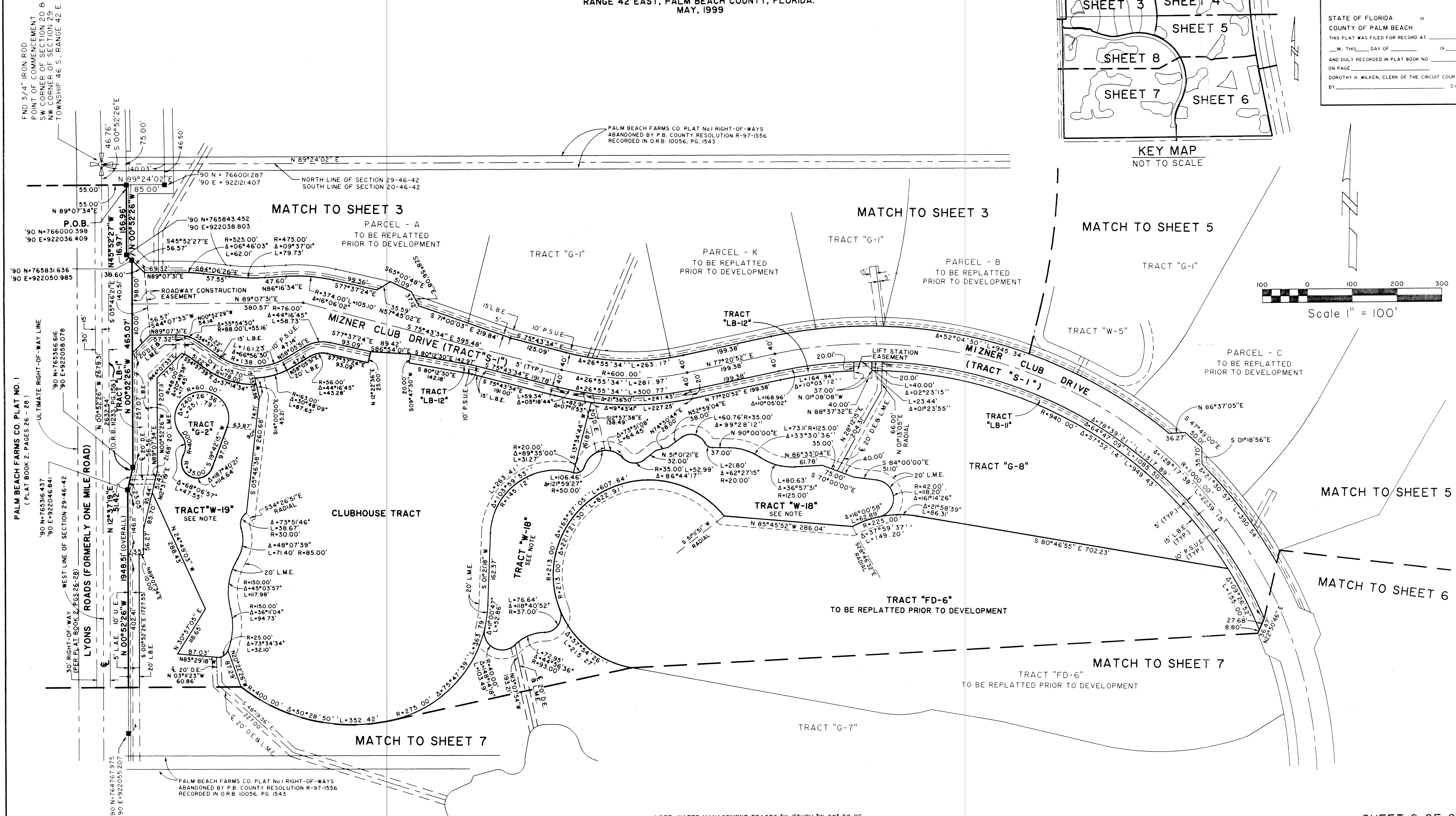
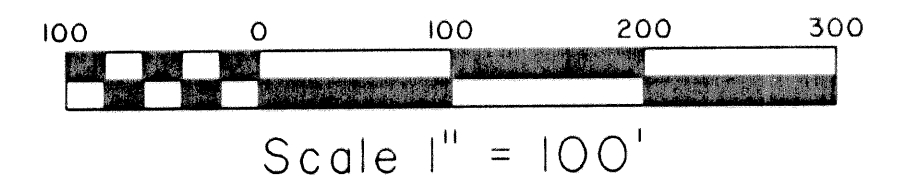
0664001

87

A PLANNED UNIT DEVELOPMENT
 BEING A REPLAT OF TRACTS 114 THROUGH 123, AND PORTIONS OF TRACTS 101-113, 124 & 125 OF SECTION 20, AND TRACTS 5 - 15, 18 - 28, 37 - 47, 50 - 61, & PORTIONS OF TRACTS 4, 16, 17, 29, 35, 36, 48, 49, & 62, OF SECTION 29, ACCORDING TO PALM BEACH FARMS CO. PLAT No. 1, AS RECORDED IN PLAT BOOK 2, PAGES 26 THROUGH 28, INCLUSIVE, PUBLIC RECORDS OF PALM BEACH COUNTY, FLORIDA; LYING IN SECTIONS 20 AND 29, TOWNSHIP 46 SOUTH, RANGE 42 EAST, PALM BEACH COUNTY, FLORIDA.
 MAY, 1999



STATE OF FLORIDA
 COUNTY OF PALM BEACH
 THIS PLAT WAS FILED FOR RECORD AT _____
 M. THIS DAY OF _____ 19____
 AND DULY RECORDED IN PLAT BOOK NO. _____
 ON PAGE _____
 DOROTHY H. WILKEN, CLERK OF THE CIRCUIT COURT
 BY _____ D.C.



FND 3/4" IRON ROD
 POINT OF COMMENCEMENT
 SW CORNER OF SECTION 20 &
 NW CORNER OF SECTION 29
 TOWNSHIP 46 S., RANGE 42 E.

PALM BEACH FARMS CO. PLAT NO. 1
 (PLAT BOOK 2, PAGES 26 - 28)
 ULTIMATE RIGHT-OF-WAY LINE
 90 N-76536.437
 90 E-922046.841

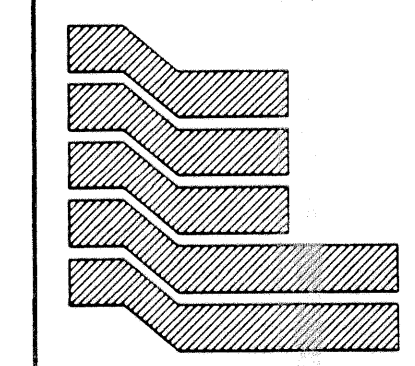
LYONS ROADS (FORMERLY ONE MILE ROAD)
 WEST LINE OF SECTION 29-46-42
 90 N-76536.437
 90 E-922046.841

PALM BEACH FARMS CO. PLAT No. 1 RIGHT-OF-WAYS
 ABANDONED BY P.B. COUNTY RESOLUTION R-97-1556
 RECORDED IN O.R.B. 10056, PG. 1543

NOTE: WATER MANAGEMENT TRACTS "W-1" THRU "W-20" TO BE MAINTAINED BY THE MIZNER COUNTRY CLUB MASTER ASSOCIATION, INC., SUBJECT TO EXISTING LITTORAL ZONE RESTRICTIVE COVENANT AGREEMENT AS RECORDED IN O.R.B. 10619, PG. 1666, PUBLIC RECORDS OF PALM BEACH COUNTY, FLORIDA.

COORDINATE NOTE:
 STATE PLANE COORDINATES SHOWN ARE GRID DATUM, NAD 83 1990 ADJUSTMENT, FLORIDA EAST ZONE, COORDINATE SYSTEM 1983 STATE PLANE, TRANSVERSE MERCATOR PROJECTION
 LINEAR UNIT = US SURVEY FEET
 ALL DISTANCES ARE GROUND
 SCALE FACTOR = 1.000020427035
 GROUND DISTANCE X SCALE FACTOR = GRID DISTANCE
 BEARINGS AS SHOWN HERON ARE GRID DATUM, NAD 83 1990 ADJUSTMENT, FLORIDA EAST ZONE.

Subdivision: Delray Training Center
 Book: 840
 Page: 67
 Flood Zone: FLOODPLAIN # 015A
 Chain: 50
 Zoning: PUD
 SR: 87-1
 Tax: 7601769
 PUD Name: Delray Training Center



Landmark Surveying & Mapping Inc.
 1850 Forest Hill Boulevard
 Ph. (561) 433-5405 Suite 100 W.P.B. Florida

DELRAY TRAINING CENTER-PLAT ONE

SHEET 8 OF 8

2395PLB