

0587-027

# WINSTON TRAILS PARCEL EIGHTEEN

PART OF WINSTON TRAILS P.U.D.  
BEING A REPLAT OF TRACT F,  
"WINSTON TRAILS EAST"  
(PB 85, PGS 74-78)  
SITUATE IN SECTION 2, TOWNSHIP 45 SOUTH, RANGE 42 EAST  
PALM BEACH COUNTY, FLORIDA  
DECEMBER, 1998 SHEET 6 OF 6

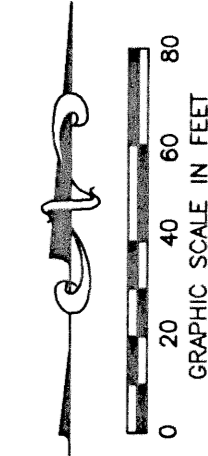
**47**

STATE OF FLORIDA  
COUNTY OF PALM BEACH

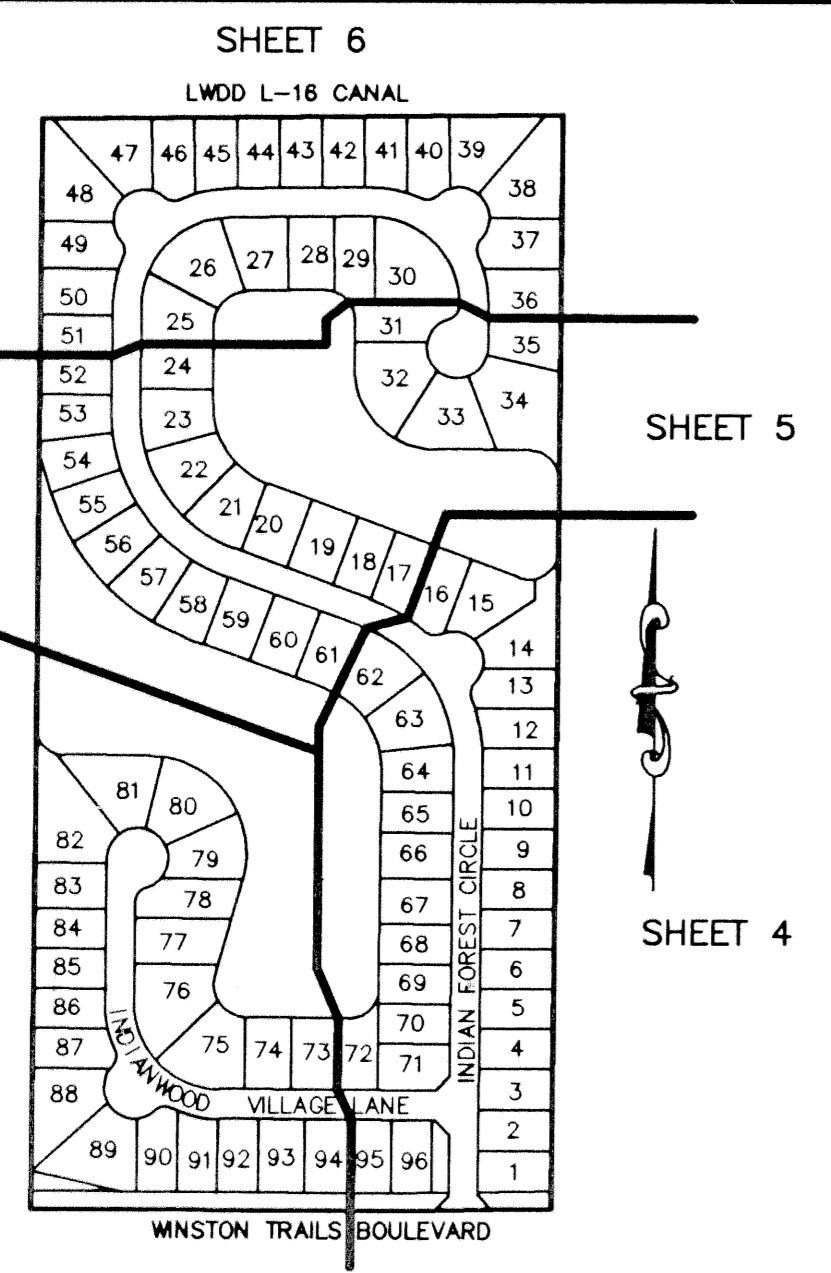
THIS PLAT WAS FILED FOR  
RECORD \_\_\_\_\_ DAY OF \_\_\_\_\_  
AD, 1999 AND DULY RECORDED  
IN PLAT BOOK \_\_\_\_\_ ON PAGES  
\_\_\_\_\_ AND \_\_\_\_\_

DOROTHY H. WILKEN, CLERK  
BY: \_\_\_\_\_, D.C.

CIRCUIT COURT SEAL



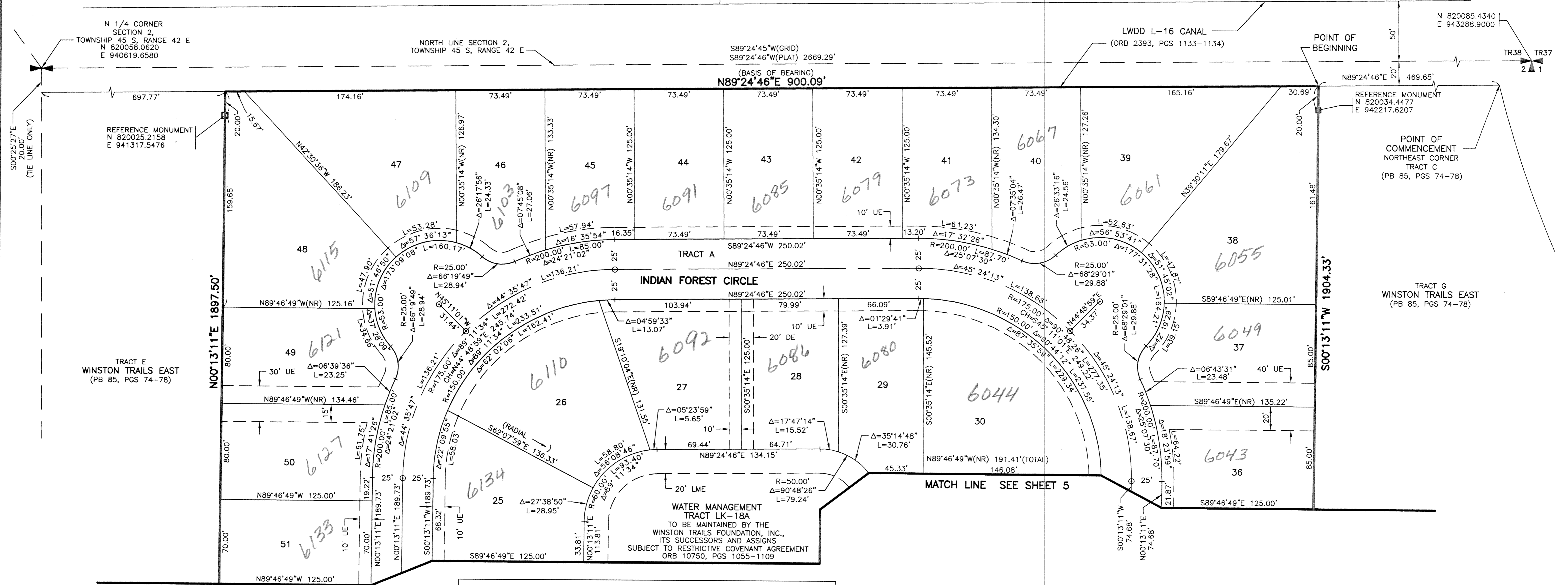
- LEGEND**
- L ARC LENGTH
  - AE ACCESS EASEMENT
  - BE BUFFER EASEMENT
  - Δ CENTRAL (DELTA) ANGLE
  - CH CHORD
  - DE DRAINAGE EASEMENT
  - FPL FLORIDA POWER & LIGHT
  - LAE LIMITED ACCESS EASEMENT
  - LME LAKE MAINTENANCE EASEMENT
  - LMAE LAKE MAINTENANCE ACCESS EASEMENT
  - LWDD LAKE WORTH DRAINAGE DISTRICT
  - PUD PLANNED UNIT OF DEVELOPMENT
  - (NR) NON-RADIAL
  - ORB OFFICIAL RECORD BOOK
  - ORB PLAT BOOK
  - PG(S) PAGE(S)
  - R RADIUS
  - (TYP) TYPICAL
  - UE UTILITY EASEMENT
  - PERMANENT REFERENCE MONUMENT FOUND LB #048
  - PERMANENT REFERENCE MONUMENT SET LB #048
  - PERMANENT CONTROL POINT SET LB #048
  - ⊖ CENTERLINE



SHEET LOCATION MAP  
(NOT TO SCALE)

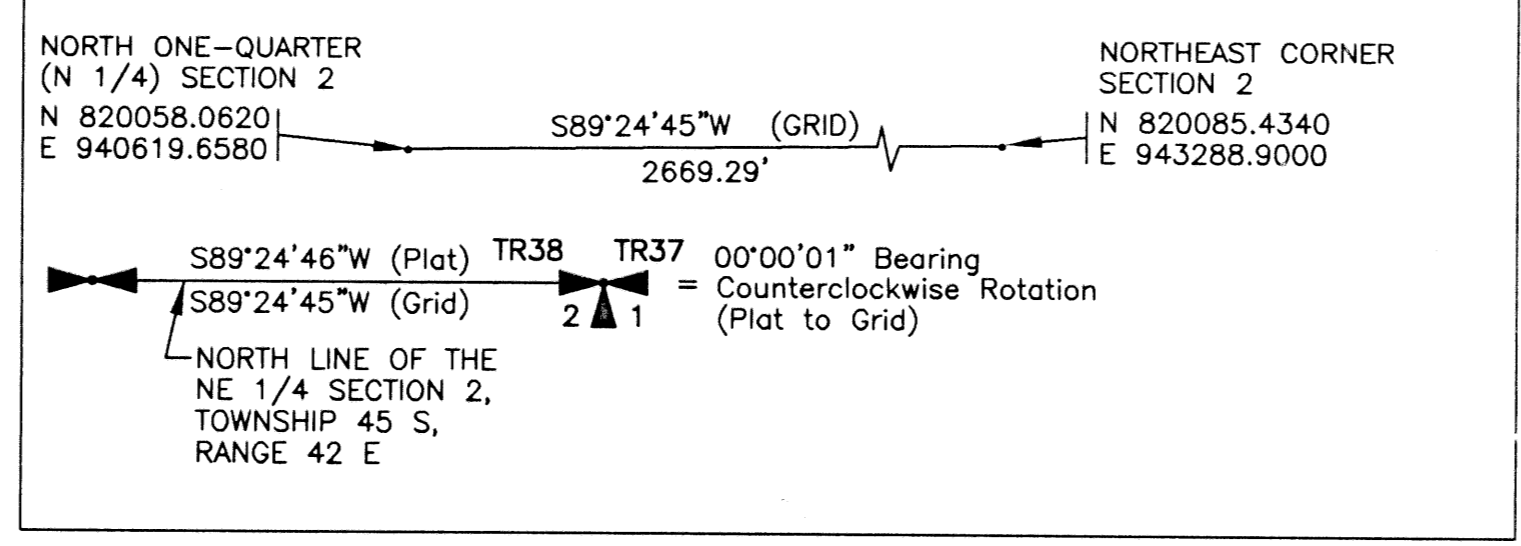
WINSTON TRAILS PARK  
(PB 71, PGS 183-184)

LOT 1  
TRACT 38  
NOT PLATTED



MATCH LINE SEE SHEET 5

- NOTES:**
- THE COORDINATES SHOWN HEREON ARE STATE PLANE GRID COORDINATES ACCORDING TO THE TRANSVERSE MERCATOR PROJECTION OF THE FLORIDA EAST ZONE, N.A.D. 83, PER THE 1990 ADJUSTMENT.
  - THE LINEAR DIMENSIONS SHOWN HEREON ARE GROUND DISTANCES IN U.S. FEET AND DECIMAL PARTS THEREOF.
  - THE GROUND DISTANCE TO GRID DISTANCE SCALE FACTOR IS 1.0000337 (GROUND DISTANCE X SCALE FACTOR = GRID DISTANCE).
  - THE FILING OF THIS PLAT EXTINGUISHES THAT PORTION OF THE EASEMENT RECORDED IN OFFICIAL RECORD BOOK 10627, PAGE 700 OF THE PUBLIC RECORDS OF PALM BEACH COUNTY, FLORIDA, WHICH IS LOCATED ON THE PROPERTY SUBJECT TO THIS PLAT.



THIS INSTRUMENT WAS PREPARED BY MARY HANNA CLODFELTER, P.S.M. IN THE OFFICES OF MOCK, ROOS & ASSOCIATES, INC., 5720 CORPORATE WAY, WEST PALM BEACH, FLORIDA 33407.

SCALE:	1" = 40'
P.A. NO.:	98008.80
DATE:	DECEMBER 1998
DRAWING NO.:	45-42-02-122

**MOCK • ROOS**  
ENGINEERS • SURVEYORS • PLANNERS

5720 Corporate Way, West Palm Beach, Florida 33407  
(561) 683-3113, fax 478-7248

**WINSTON TRAILS  
PARCEL EIGHTEEN**

PART OF WINSTON TRAILS P.U.D.  
BEING A REPLAT OF TRACT F,  
"WINSTON TRAILS EAST"  
(PB 85, PGS 74-78)

SECTION 2, TOWNSHIP 45 SOUTH, RANGE 42 EAST  
PALM BEACH COUNTY, FLORIDA

Winston Trails Parcel 18

PAGE: 47

BLANK PAGE # 175B

ZONING: RS15F

REV: 87-112

ZIP CODE: 33436

FILE NAME: Winston Trails

REV.: 09-02-99  
CAD FILE: MUSSWTEP/WTEPR09