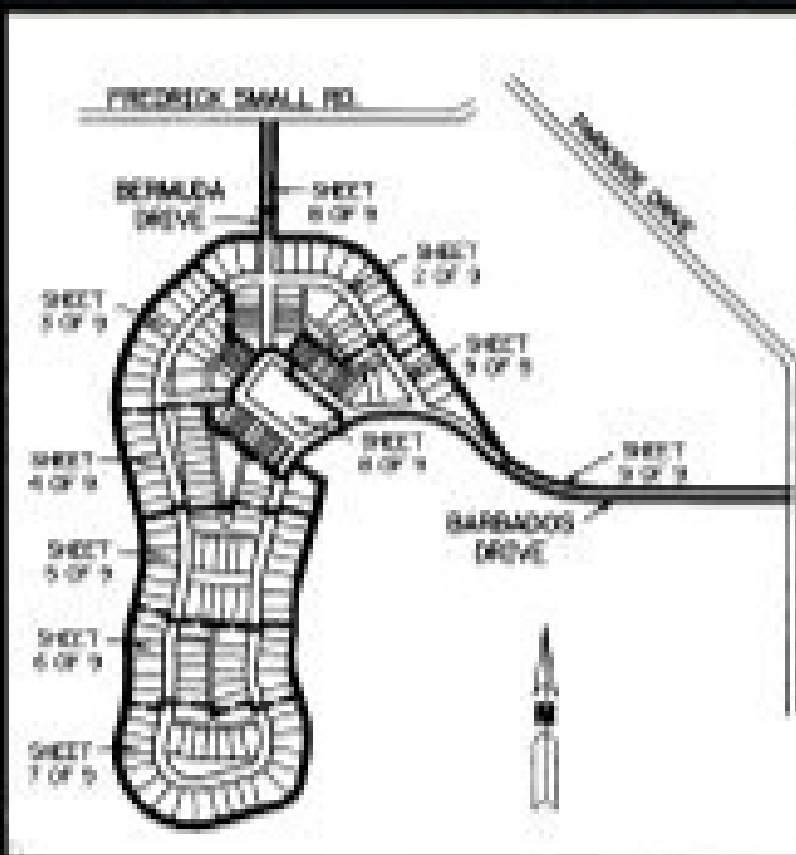


THE ISLAND AT ABACOA

BEING A REPLAT OF ALL OF TRACTS RN1A AND RN1B ACCORDING TO THE PLAT OF ABACOA PLAT NO. 1, AS RECORDED IN PLAT BOOK 78, PAGES 145 THROUGH 163, INCLUSIVE, OF THE PUBLIC RECORDS OF PALM BEACH COUNTY, FLORIDA, LYING IN SECTION 23, TOWNSHIP 41 SOUTH, RANGE 42 EAST.

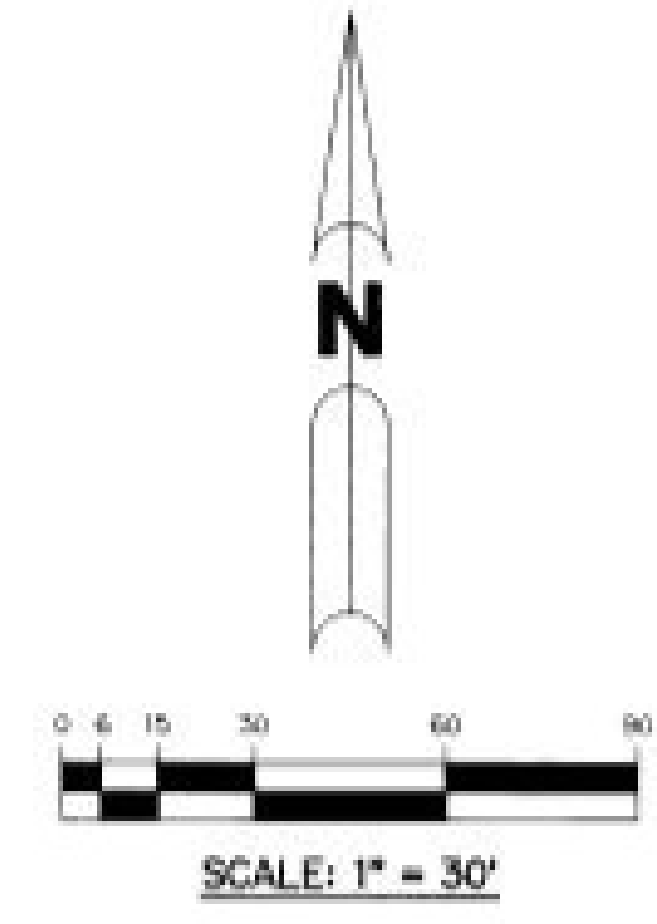
SHEET 4 OF 9 MAY, 1999



KEY MAP
N.T.S.

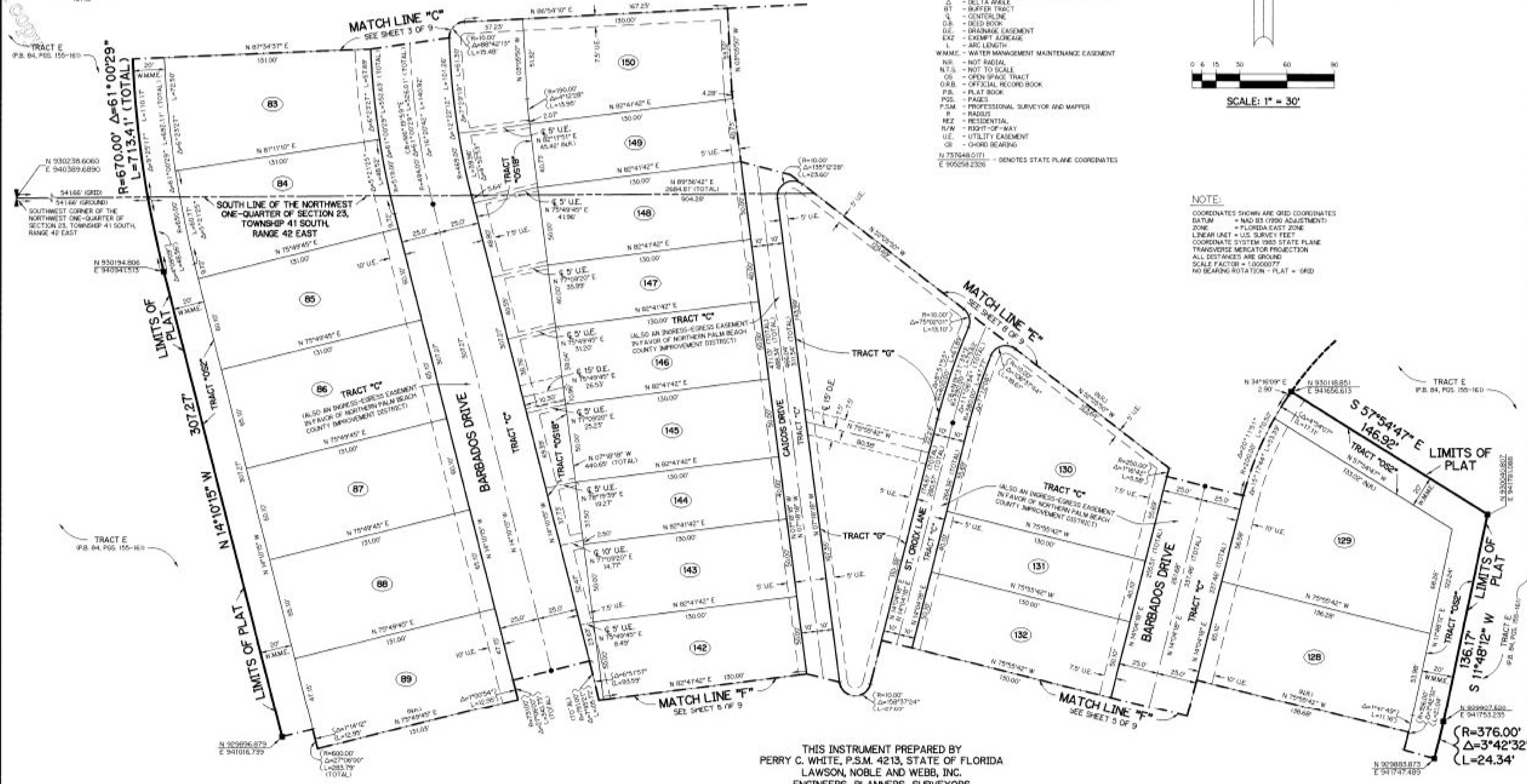
LEGEND:

- - FOUND PERMANENT REFERENCE MONUMENT, PSM #3915
 - - SET PERMANENT CONTROL POINT, PSM #4213
 - △ - DELTA MARK
 - BT - BUFFER TRACT
 - CL - CENTERLINE
 - D.B. - DEED BOOK
 - D.E. - DRAINAGE EASEMENT
 - EX2 - EXEMPT AGREEMENT
 - L - ARC LENGTH
 - WM.M.C. - WATER MANAGEMENT MAINTENANCE EASEMENT
 - NS - NOT RADIAL
 - N.T.S. - NOT TO SCALE
 - OS - OPEN SPACE TRACT
 - O.R.B. - OFFICIAL RECORD BOOK
 - P.B. - PLAT BOOK
 - P.S. - PAGES
 - P.S.M. - PROFESSIONAL SURVEYOR AND MAPPER
 - R - RADIUS
 - RES - RESIDENTIAL
 - R/W - RIGHT-OF-WAY
 - U.E. - UTILITY EASEMENT
 - GR - CHORD BEARING
- N 757248.0171
E 300258.2326 - DENOTES STATE PLANE COORDINATES



NOTE:

COORDINATES SHOWN ARE GRID COORDINATES
 DATUM = NAD 83 (1980 ADJUSTMENT)
 ZONE = FLORIDA EAST ZONE
 LINEAR UNIT = U.S. SURVEY FEET
 COORDINATE SYSTEM 1983 STATE PLANE
 TRANSVERSE MERCATOR PROJECTION
 ALL DISTANCES ARE GROUND
 SCALE FACTOR = 1.0000077
 NO BEARING ROTATION - PLAT = GRID



THIS INSTRUMENT PREPARED BY
 PERRY C. WHITE, P.S.M. 4213, STATE OF FLORIDA
 LAWSON, NOBLE AND WEBB, INC.
 ENGINEERS PLANNERS SURVEYORS
 WEST PALM BEACH, FLORIDA
 LB 6674