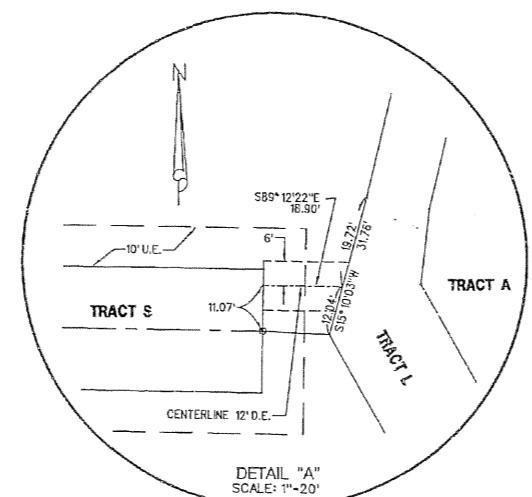


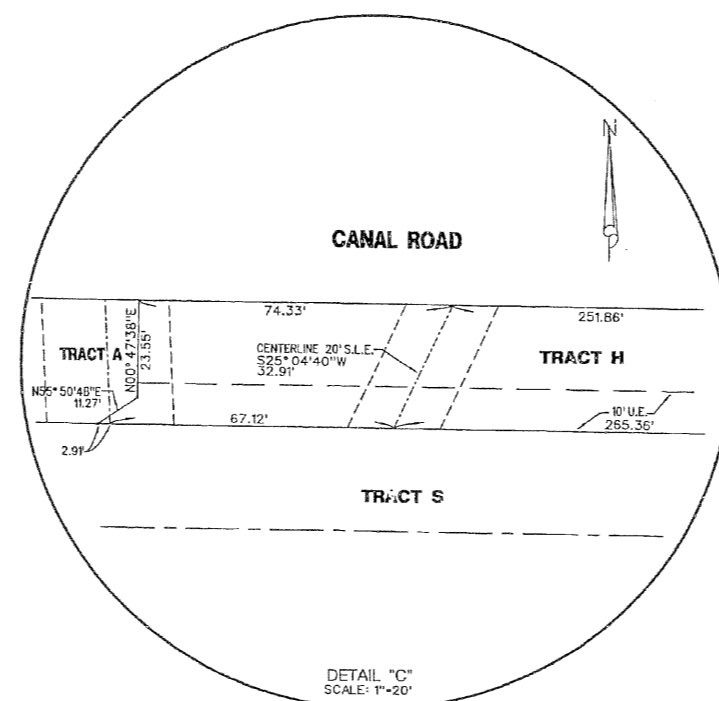
PROSPERITY HARBOR NORTH P.U.D.

Being a portion of Section 5, Township 42 South, Range 43 East,
Village of North Palm Beach, Palm Beach County, Florida.
Sheet 7 of 7 June 1999

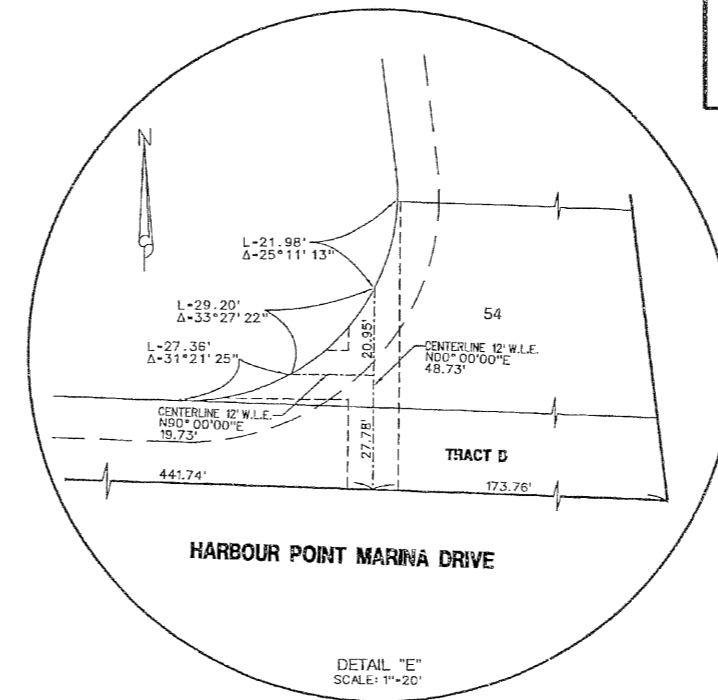
109



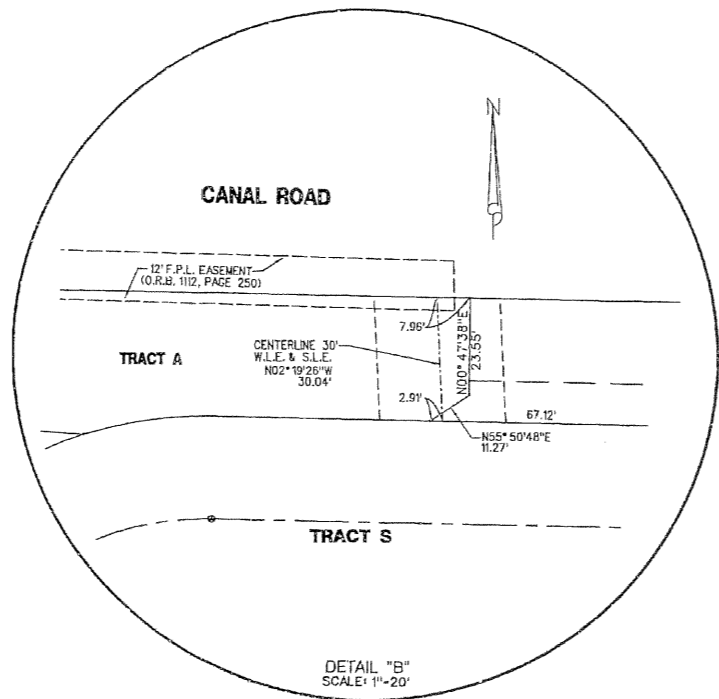
DETAIL "A"
SCALE: 1"=20'



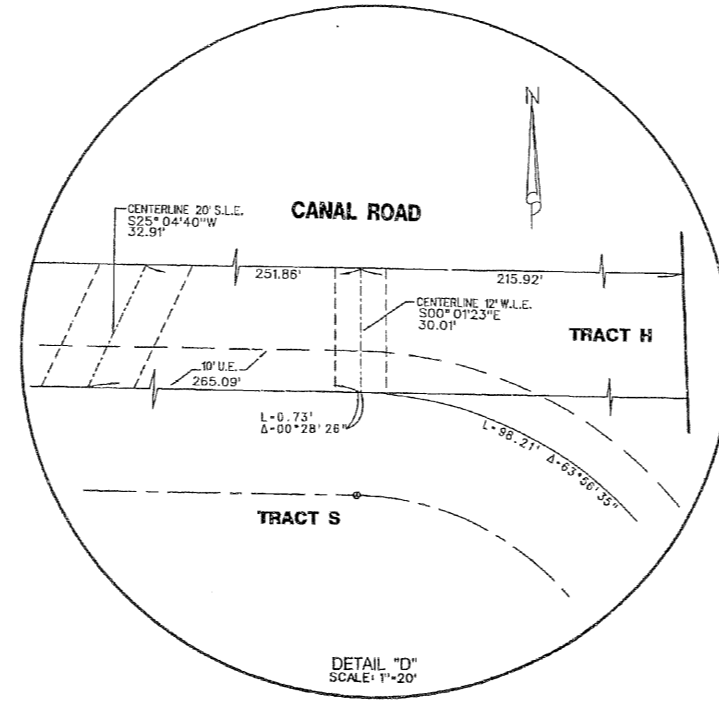
DETAIL "C"
SCALE: 1"=20'



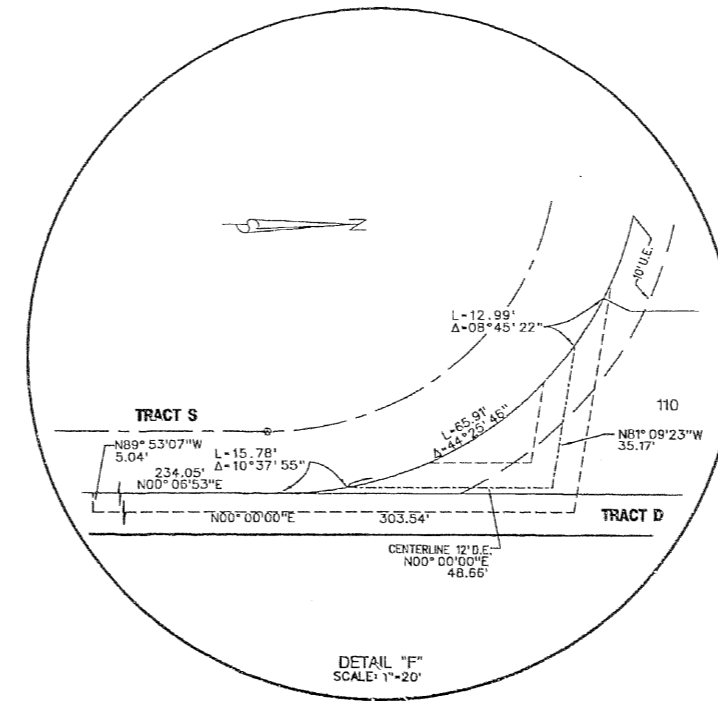
DETAIL "E"
SCALE: 1"=20'



DETAIL "B"
SCALE: 1"=20'



DETAIL "D"
SCALE: 1"=20'



DETAIL "F"
SCALE: 1"=20'

LIBBERG LAND SURVEYING, INC.		CAD: K:\STATION\SECTION \ 05-42-43 \ 1389308\ SHEET7.DGN	
REF.		JOB 98-125(308)	
FLD.	FB.	PG.	DATE 10/05/98
OFF. R.W. A.P.	SHEET 7 OF 7		DWG. 08-1389
CKD. D.C.L.			