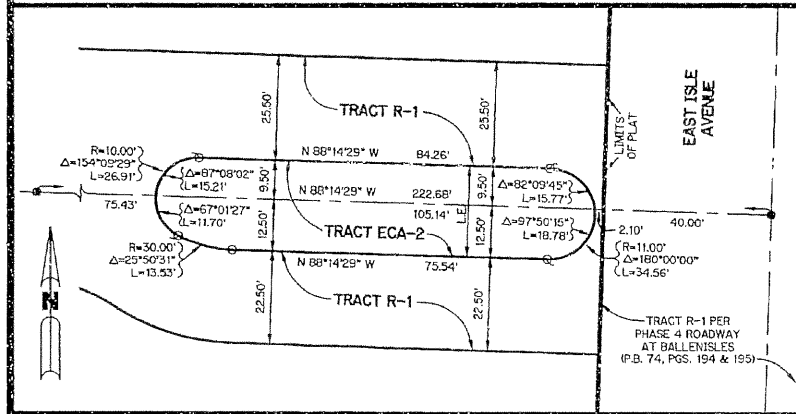


BALLENISLES POD 24

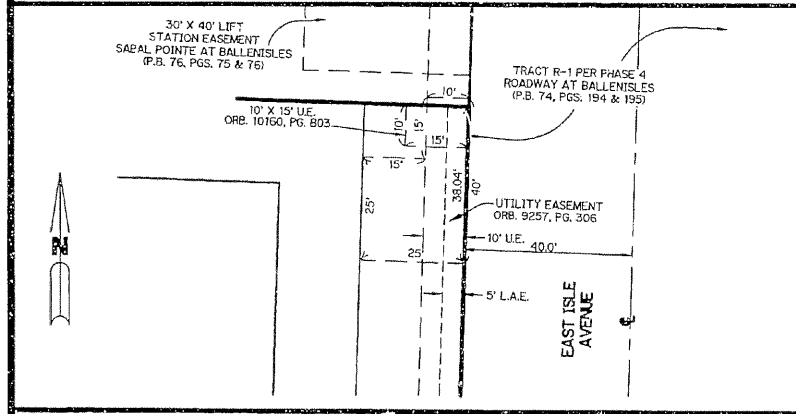
BEING A PORTION OF SECTION 13, TOWNSHIP 42 SOUTH, RANGE 42 EAST,
CITY OF PALM BEACH GARDENS, PALM BEACH COUNTY, FLORIDA.

SHEET 2 OF 3 FEBRUARY, 1999

98



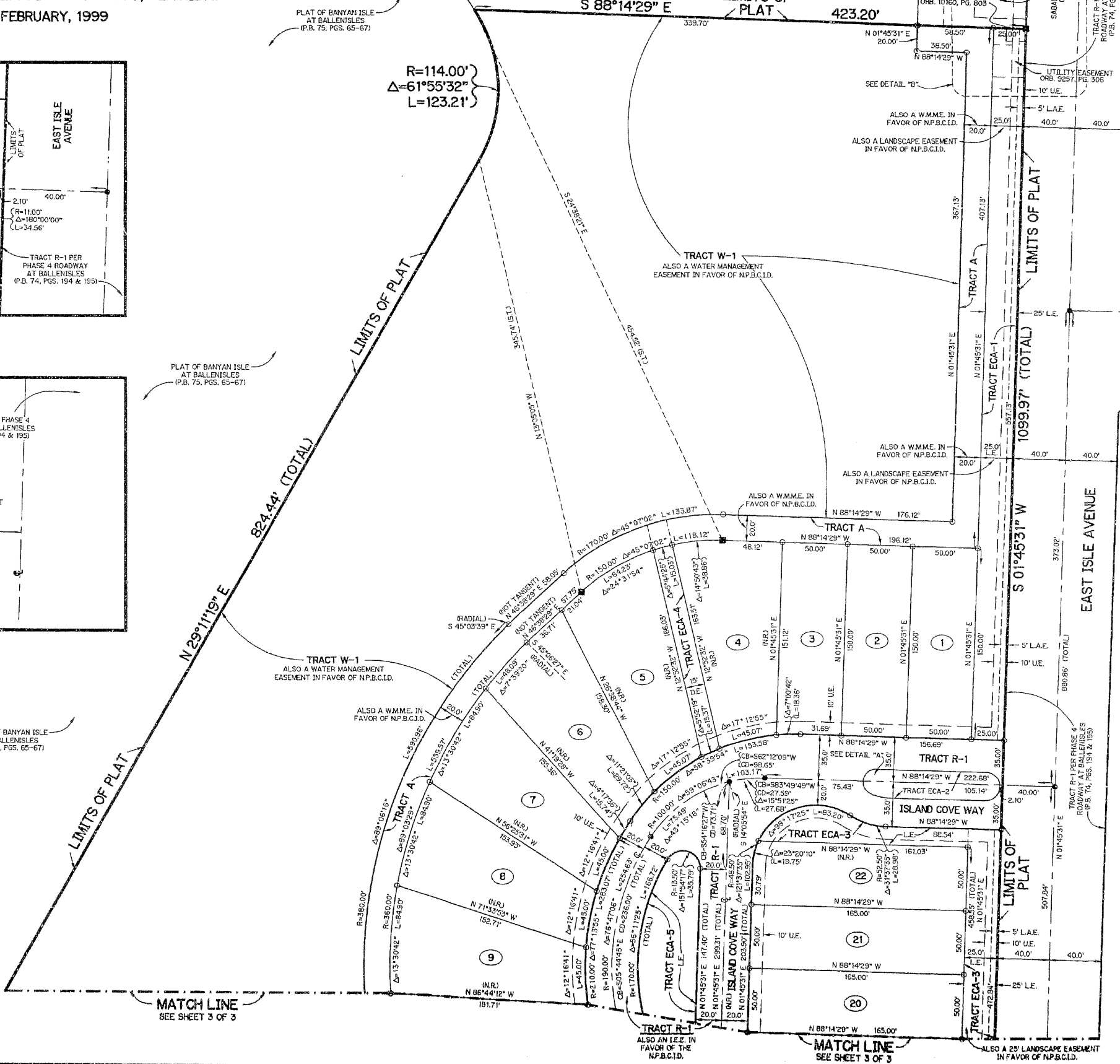
DETAIL "A"
SCALE: 1" = 20'



DETAIL "B"
SCALE: 1" = 20'

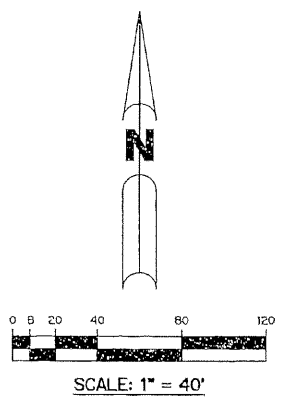
- LEGEND:**
- - SET PERMANENT REFERENCE MONUMENT, LB - 6674
 - - FOUND PERMANENT REFERENCE MONUMENT
 - - SET PERMANENT CONTROL POINT, LB - 6674
 - Δ - DELTA ANGLE
 - CB - CHORD BEARING
 - CD - CHORD DISTANCE
 - C - CENTERLINE
 - D.E. - DRAINAGE EASEMENT
 - ECA - EXCLUSIVE COMMON AREA TRACT WITH NUMBER
 - GC - GOLF COURSE TRACT WITH NUMBER
 - I.E. - INGRESS - EGRESS EASEMENT
 - L - ARC LENGTH
 - L.A.E. - LIMITED ACCESS EASEMENT
 - N.P.B.C.I.D. - NORTHERN PALM BEACH COUNTY IMPROVEMENT DISTRICT
 - N.R. - NOT RADIAL
 - N.T.S. - NOT TO SCALE
 - ORB. - OFFICIAL RECORD BOOK
 - P.B. - PLAT BOOK
 - P.G.S. - PAGES
 - PLS - PROFESSIONAL LAND SURVEYOR
 - P.S.M. - PROFESSIONAL SURVEYOR AND MAPPER
 - R - RADIUS
 - R/W - RIGHT-OF-WAY
 - S.T. - SURVEY TIE
 - U.E. - UTILITY EASEMENT
 - W.M.A.E. - WATER MANAGEMENT ACCESS EASEMENT
 - W.M.M.E. - WATER MANAGEMENT MAINTENANCE EASEMENT
 - L.E. - LANDSCAPE EASEMENT
 - W.S.E. - WATER & SEWER EASEMENT
 - - SET 5/8 IRON ROD WITH CAP LB-6674

THIS INSTRUMENT PREPARED BY
WILBUR F. DIVINE, P.S.M. 4190, STATE OF FLORIDA
LAWSON, NOBLE AND WEBB, INC.
ENGINEERS PLANNERS SURVEYORS
420 COLUMBIA DRIVE
WEST PALM BEACH, FLORIDA
CERTIFICATE OF AUTHORIZATION NUMBER LB6674

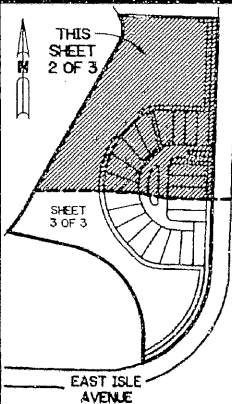


MATCH LINE
SEE SHEET 3 OF 3

MATCH LINE
SEE SHEET 3 OF 3



KEY MAP
N.T.S.



A370 SHEET 2 OF 3