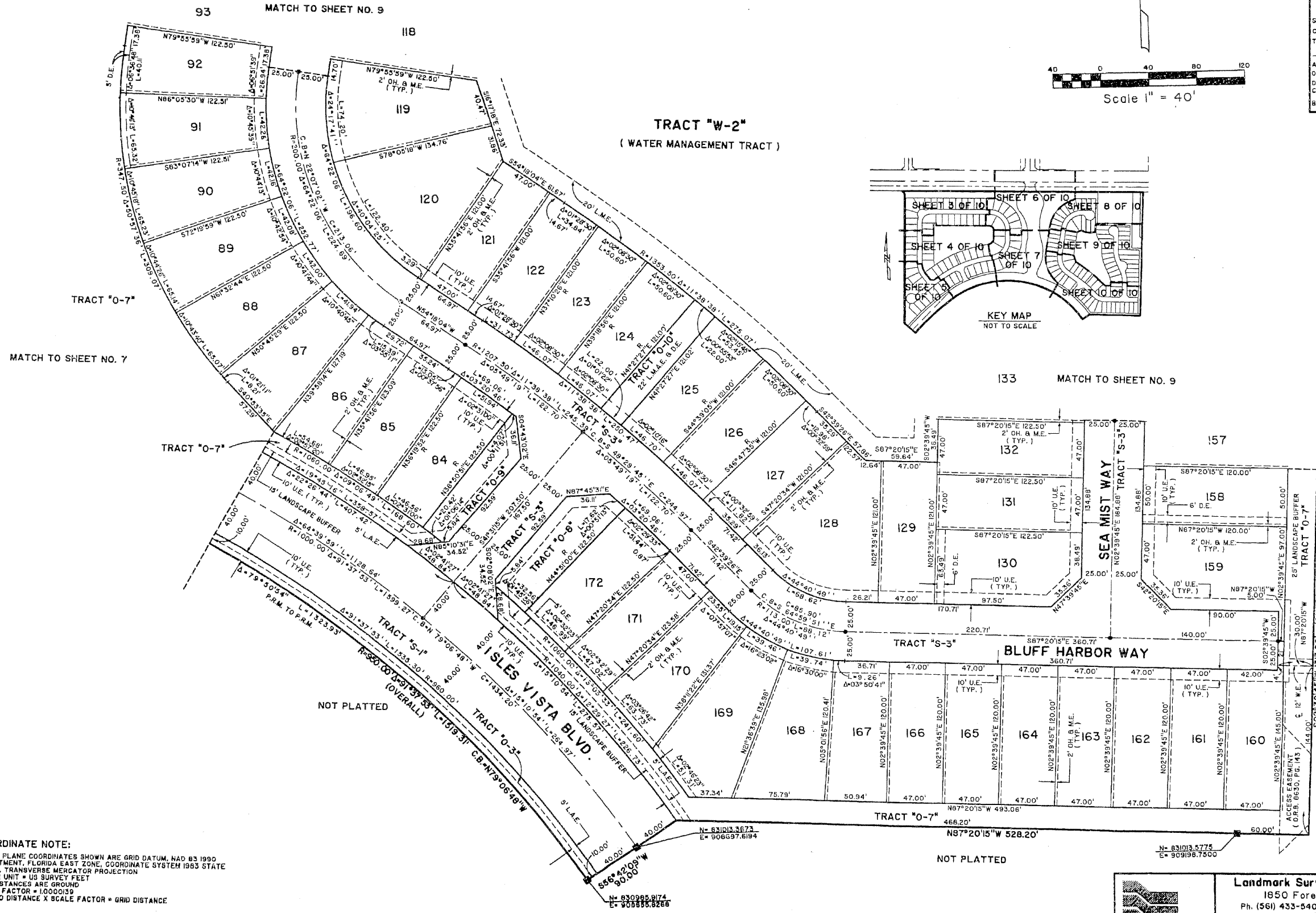
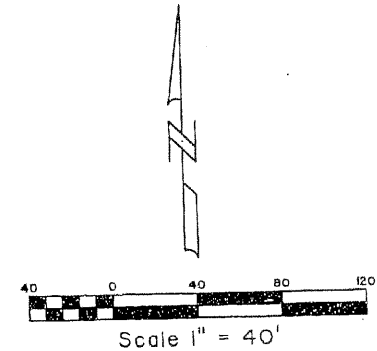


THE ISLES AT WELLINGTON PLAT 1

A PORTION OF THE ORANGE POINT P.U.D.
 LYING IN SECTION 26, TOWNSHIP 44 SOUTH, RANGE 41 EAST,
 VILLAGE OF WELLINGTON, PALM BEACH COUNTY, FLORIDA.
 SHEET 10 OF 10

96

STATE OF FLORIDA 55
 COUNTY OF PALM BEACH
 THIS PLAT WAS FILED FOR RECORD AT _____
 M. THIS DAY OF _____ 19____
 AND DULY RECORDED IN PLAT BOOK NO. _____
 ON PAGE _____
 DOROTHY H. WILKEN,
 CLERK OF THE CIRCUIT COURT
 BY _____ D.C.



COORDINATE NOTE:
 STATE PLANE COORDINATES SHOWN ARE GRID DATUM, NAD 83 1990
 ADJUSTMENT, FLORIDA EAST ZONE, COORDINATE SYSTEM 1983 STATE
 PLANE, TRANSVERSE MERCATOR PROJECTION
 LINEAR UNIT = US SURVEY FEET
 ALL DISTANCES ARE GROUND
 SCALE FACTOR = 1.0000139
 GROUND DISTANCE X SCALE FACTOR = GRID DISTANCE



Landmark Surveying & Mapping Inc.
 1850 Forest Hill Boulevard
 Ph. (561) 433-5405 Suite 100 W.P.B. Florida
 LB # 4396

THE ISLES AT WELLINGTON PLAT 1