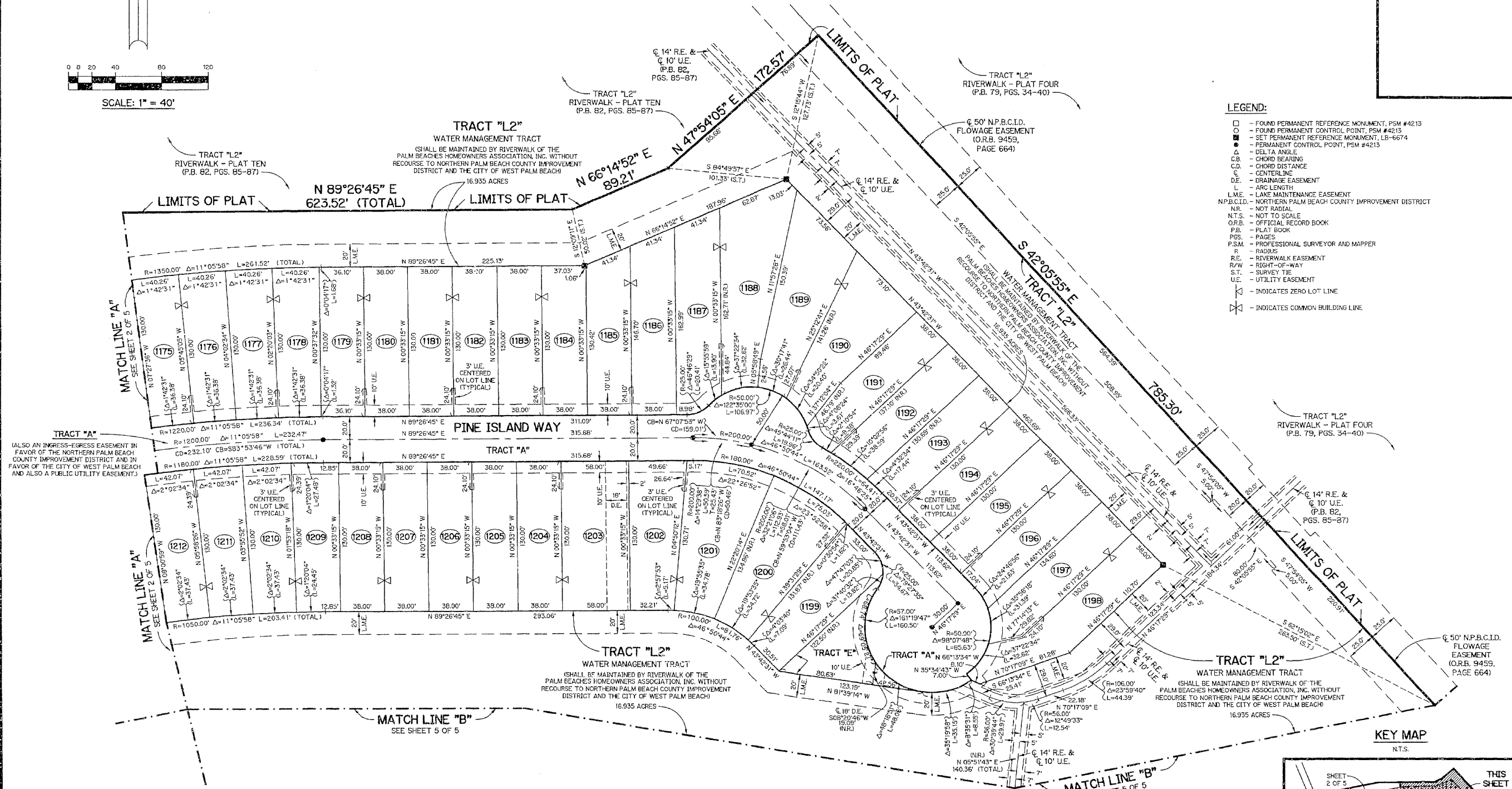
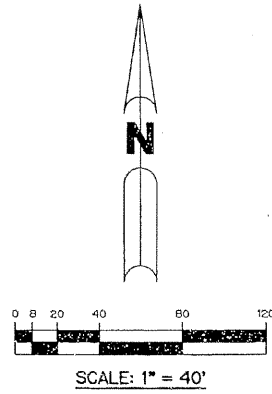


# RIVERWALK - PLAT TWELVE

A PARCEL OF LAND LYING IN SECTION 21, TOWNSHIP 43 SOUTH,  
RANGE 42 EAST, CITY OF WEST PALM BEACH,  
PALM BEACH COUNTY, FLORIDA.

SHEET 3 OF 5 JANUARY, 1999



- LEGEND:**
- - FOUND PERMANENT REFERENCE MONUMENT, PSM #4213
  - - FOUND PERMANENT CONTROL POINT, PSM #4213
  - - SET PERMANENT REFERENCE MONUMENT, LB-6674
  - - PERMANENT CONTROL POINT, PSM #4213
  - Δ - DELTA ANGLE
  - C.B. - CHORD BEARING
  - C.D. - CHORD DISTANCE
  - C. - CENTERLINE
  - D.E. - DRAINAGE EASEMENT
  - L. - ARC LENGTH
  - L.M.E. - LAKE MAINTENANCE EASEMENT
  - N.P.B.C.I.D. - NORTHERN PALM BEACH COUNTY IMPROVEMENT DISTRICT
  - N.R. - NOT RADIAL
  - N.T.S. - NOT TO SCALE
  - O.R.B. - OFFICIAL RECORD BOOK
  - P.B. - PLAT BOOK
  - P.G.S. - PAGES
  - P.S.M. - PROFESSIONAL SURVEYOR AND MAPPER
  - R. - RADIUS
  - R/E. - RIVERWALK EASEMENT
  - R/W. - RIGHT-OF-WAY
  - S.T. - SURVEY TIE
  - U.E. - UTILITY EASEMENT
  - - INDICATES ZERO LOT LINE
  - ⊗ - INDICATES COMMON BUILDING LINE

TRACT "A"  
ALSO AN INGRESS-EGRESS EASEMENT IN FAVOR OF THE NORTHERN PALM BEACH COUNTY IMPROVEMENT DISTRICT AND IN FAVOR OF THE CITY OF WEST PALM BEACH AND ALSO A PUBLIC UTILITY EASEMENT.)

TRACT "L2"  
WATER MANAGEMENT TRACT  
(SHALL BE MAINTAINED BY RIVERWALK OF THE PALM BEACHES HOMEOWNERS ASSOCIATION, INC. WITHOUT RECOURSE TO NORTHERN PALM BEACH COUNTY IMPROVEMENT DISTRICT AND THE CITY OF WEST PALM BEACH)  
16.935 ACRES

TRACT "L2"  
WATER MANAGEMENT TRACT  
(SHALL BE MAINTAINED BY RIVERWALK OF THE PALM BEACHES HOMEOWNERS ASSOCIATION, INC. WITHOUT RECOURSE TO NORTHERN PALM BEACH COUNTY IMPROVEMENT DISTRICT AND THE CITY OF WEST PALM BEACH)  
16.935 ACRES

THIS INSTRUMENT PREPARED BY  
PERRY C. WHITE, P.S.M. 4213, STATE OF FLORIDA  
LAWSON, NOBLE AND WEBB, INC., LB-6674  
ENGINEERS PLANNERS SURVEYORS  
420 COLUMBIA DRIVE, SUITE 110  
WEST PALM BEACH, FLORIDA

