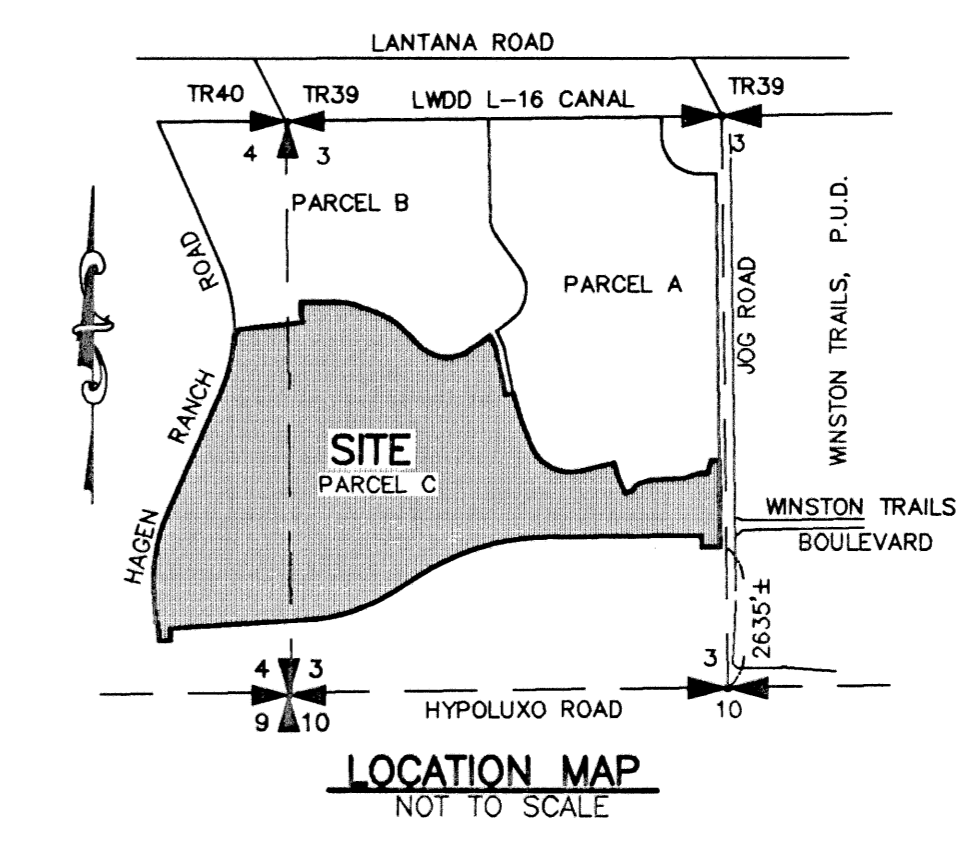
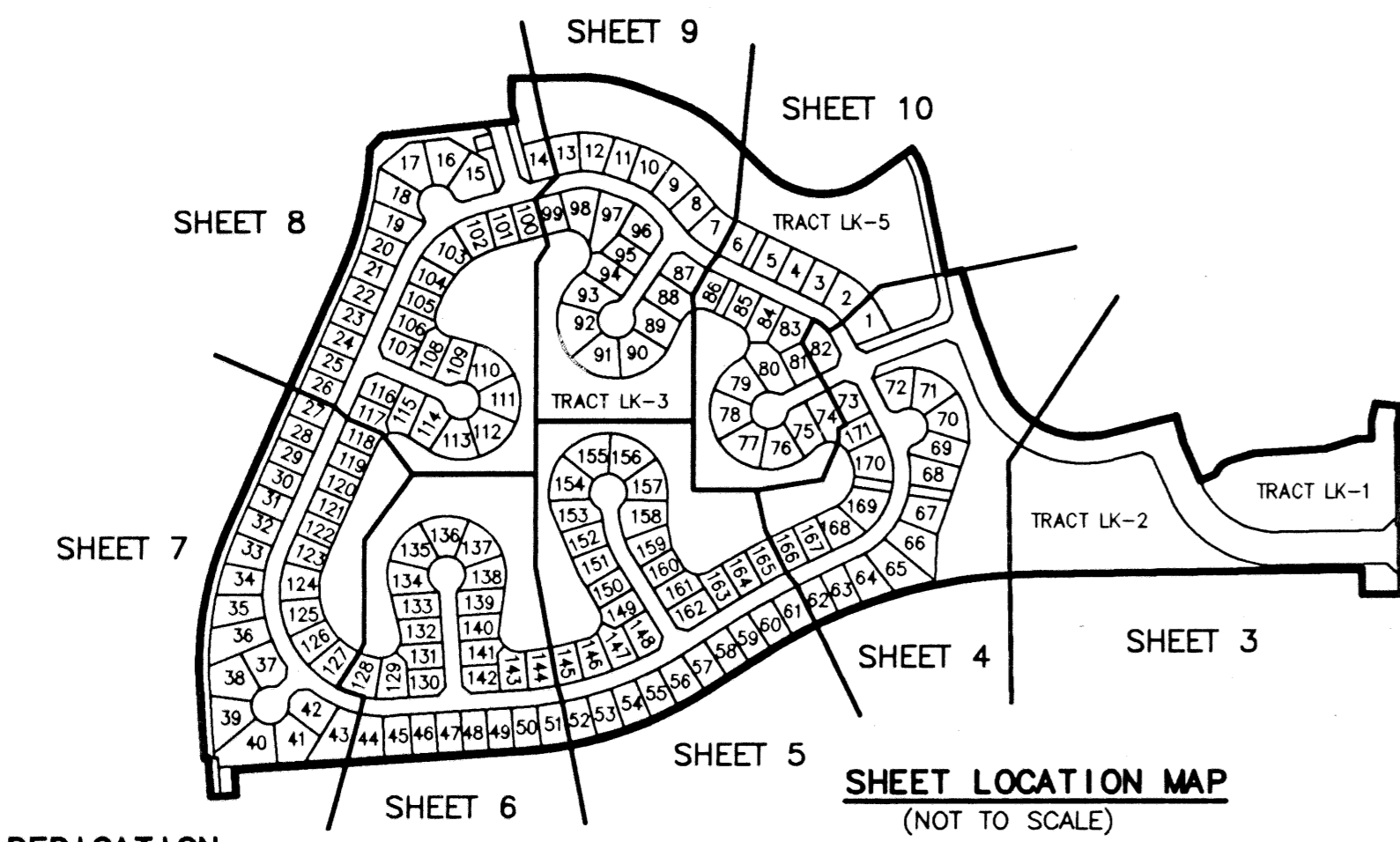


JOURNEY'S END PLAT ONE

PART OF SMITH DAIRY EAST P.U.D.
 BEING A PORTION OF SECTION 3, TOWNSHIP 45 SOUTH, RANGE 42 EAST
 TOGETHER WITH A REPLAT OF A PORTION OF BLOCKS 38 AND 39,
 PALM BEACH FARMS COMPANY, PLAT NO. 3,
 PLAT BOOK 2, PAGES 45 THROUGH 54
 SITUATE IN SECTIONS 3 & 4, TOWNSHIP 45 SOUTH, RANGE 42 EAST
 PALM BEACH COUNTY, FLORIDA
 JANUARY, 1999 SHEET 1 OF 10



32

STATE OF FLORIDA
 COUNTY OF PALM BEACH

THIS PLAT WAS FILED FOR
 RECORD 1:31 AM
 THIS 4th DAY OF June
 AD, 1999 AND DULY RECORDED
 IN PLAT BOOK 85 ON PAGES
32 AND 41

DOROTHY H. WALKER, CLERK
 By: Debra L. Hardy, D.C.

CIRCUIT COURT SEAL

DEDICATION

KNOW ALL MEN BY THESE PRESENTS THAT THE WESTBROOKE COMPANIES, INC., OWNER OF THE LAND SHOWN HEREON AS "JOURNEY'S END PLAT ONE", PART OF SMITH DAIRY EAST P.U.D., BEING A PORTION OF SECTION 3, TOWNSHIP 45 SOUTH, RANGE 42 EAST TOGETHER WITH A REPLAT OF A PORTION OF BLOCKS 38 AND 39, PALM BEACH FARMS COMPANY, PLAT NO. 3, AS RECORDED IN PLAT BOOK 2, PAGES 45 THROUGH 54, INCLUSIVE, OF THE PUBLIC RECORDS OF PALM BEACH COUNTY, FLORIDA, BEING MORE PARTICULARLY DESCRIBED AS FOLLOWS:

A PORTION OF SECTIONS 3 AND 4, TOWNSHIP 45 SOUTH, RANGE 42 EAST, PALM BEACH COUNTY, FLORIDA, ALSO BEING A PORTION OF BLOCKS 38 AND 39, AS SHOWN ON PLAT OF PALM BEACH FARMS COMPANY, PLAT NO. 3, AS RECORDED IN PLAT BOOK 2 AT PAGES 45 THROUGH 54, INCLUSIVE, OF THE PUBLIC RECORDS OF SAID PALM BEACH COUNTY, FLORIDA, BEING MORE PARTICULARLY DESCRIBED AS FOLLOWS:

COMMENCING AT THE NORTHEAST CORNER OF THE NORTHWEST ONE-QUARTER OF SAID SECTION 3, THENCE SOUTH 00°47'13" EAST, ALONG THE EAST LINE OF SAID NORTHWEST ONE-QUARTER OF SECTION 3, A DISTANCE OF 2713.99 FEET; THENCE SOUTH 89°12'47" WEST, A DISTANCE OF 40.00 FEET TO A POINT ON THE WEST RIGHT-OF-WAY LINE OF JOG ROAD, AS RECORDED IN OFFICIAL RECORD BOOK 177 THROUGH 179, INCLUSIVE, OF THE SAID PUBLIC RECORDS; THENCE WESTERLY ALONG THE NORTHERLY LINE OF SAID FALLS COUNTRY CLUB THE FOLLOWING NINE COURSES; THENCE SOUTH 89°12'47" WEST, A DISTANCE OF 75.00 FEET; THENCE NORTH 00°47'13" WEST, A DISTANCE OF 75.00 FEET; THENCE SOUTH 89°12'47" WEST, A DISTANCE OF 97.79 FEET TO THE BEGINNING OF A CURVE CONCAVE TO THE SOUTHWEST HAVING A RADIUS OF 1493.63 FEET; THENCE SOUTHWESTERLY ALONG THE ARC OF SAID CURVE, SUBTENDING A CENTRAL ANGLE OF 31°59'34", A DISTANCE OF 834.01 FEET TO A POINT OF TANGENCY; THENCE ALONG A LINE TANGENT TO THE LAST DESCRIBED CURVE, SOUTH 57°13'13" WEST, A DISTANCE OF 200.00 FEET TO THE BEGINNING OF A CURVE CONCAVE TO THE NORTHWEST HAVING A RADIUS OF 1142.91 FEET; THENCE SOUTHWESTERLY ALONG THE ARC OF SAID CURVE, SUBTENDING A CENTRAL ANGLE OF 29°05'50", A DISTANCE OF 580.42 FEET TO A POINT OF TANGENCY; THENCE ALONG A LINE TANGENT TO LAST DESCRIBED CURVE, SOUTH 86°19'03" WEST, A DISTANCE OF 850.43 FEET; THENCE SOUTH 03°40'57" EAST, A DISTANCE OF 75.00 FEET; THENCE SOUTH 86°19'03" WEST, A DISTANCE OF 75.00 FEET TO A POINT OF INTERSECTION WITH THE EAST RIGHT-OF-WAY LINE OF HAGEN RANCH ROAD AS RECORDED IN OFFICIAL RECORD BOOK 6342, PAGE 457 OF THE SAID PUBLIC RECORDS; THENCE, DEPARTING SAID NORTH LINE OF FALLS COUNTRY CLUB AND ALONG THE SAID EAST RIGHT-OF-WAY LINE OF HAGEN RANCH ROAD, NORTH 03°40'57" WEST, A DISTANCE OF 115.00 FEET; THENCE SOUTH 86°19'03" WEST, A DISTANCE OF 12.00 FEET; THENCE NORTH 03°40'57" WEST, A DISTANCE OF 212.64 FEET TO THE BEGINNING OF A CURVE CONCAVE TO THE SOUTHWEST HAVING A RADIUS OF 1050.00 FEET; THENCE NORTHEASTERLY ALONG THE ARC OF SAID CURVE, SUBTENDING A CENTRAL ANGLE OF 27°14'26", A DISTANCE OF 499.21 FEET TO A POINT OF TANGENCY; THENCE, ALONG A LINE TANGENT TO THE LAST DESCRIBED CURVE, NORTH 23°33'29" EAST, A DISTANCE OF 825.77 FEET TO THE BEGINNING OF A CURVE CONCAVE TO THE WEST HAVING A RADIUS OF 994.93 FEET; THENCE NORTHEASTERLY ALONG THE ARC OF SAID CURVE, SUBTENDING A CENTRAL ANGLE OF 21°19'22", A DISTANCE OF 370.27 FEET TO A POINT ON A NON-TANGENT LINE; THENCE, DEPARTING SAID EAST RIGHT-OF-WAY LINE, ALONG SAID NON-TANGENT LINE, NORTH 42°53'05" EAST, A DISTANCE OF 52.11 FEET; THENCE NORTH 83°32'03" EAST, A DISTANCE OF 396.11 FEET; THENCE NORTH 15°13'48" WEST, A DISTANCE OF 42.00 FEET; THENCE NORTH 00°49'36" WEST, A DISTANCE OF 85.51 FEET; THENCE NORTH 89°10'24" EAST, A DISTANCE OF 207.07 FEET TO THE BEGINNING OF A TANGENT CURVE CONCAVE TO THE SOUTHWEST, HAVING A RADIUS OF 450.00 FEET; THENCE SOUTHEASTERLY ALONG THE ARC OF SAID CURVE SUBTENDING A CENTRAL ANGLE OF 21°10'30", A DISTANCE OF 186.31 FEET TO A POINT OF TANGENCY; THENCE ALONG A LINE TANGENT TO THE LAST DESCRIBED CURVE, SOUTH 69°39'07" EAST, A DISTANCE OF 114.88 FEET TO THE BEGINNING OF A CURVE CONCAVE TO THE SOUTHWEST, HAVING A RADIUS OF 450.00 FEET; THENCE, ALONG THE ARC OF SAID CURVE, SUBTENDING A CENTRAL ANGLE OF 24°13'17", A DISTANCE OF 190.23 FEET TO A POINT OF TANGENCY; THENCE ALONG A LINE TANGENT TO THE LAST DESCRIBED CURVE, SOUTH 45°25'50" EAST, A DISTANCE OF 157.04 FEET TO THE BEGINNING OF A CURVE CONCAVE TO THE NORTH, HAVING A RADIUS OF 240.00 FEET; THENCE ALONG THE ARC OF SAID CURVE SUBTENDING A CENTRAL ANGLE OF 80°46'01", A DISTANCE OF 338.32 FEET TO A POINT OF TANGENCY; THENCE ALONG A LINE TANGENT TO THE LAST DESCRIBED CURVE, NORTH 53°48'08" EAST, A DISTANCE OF 152.04 FEET TO A POINT ON A NON-TANGENT CURVE CONCAVE TO THE SOUTHWEST, HAVING A RADIUS OF 275.00 FEET FROM WHICH A RADIAL LINE BEARS SOUTH 55°20'12" WEST; THENCE ALONG THE ARC OF SAID NON-TANGENT CURVE, SUBTENDING A CENTRAL ANGLE OF 23°17'33", A DISTANCE OF 111.80 FEET TO A POINT OF TANGENCY; THENCE ALONG A LINE TANGENT TO THE LAST DESCRIBED CURVE, SOUTH 11°22'15" EAST, A DISTANCE OF 275.18 FEET; THENCE NORTH 78°37'45" EAST, A DISTANCE OF 50.00 FEET; THENCE SOUTH 16°44'39" EAST, A DISTANCE OF 154.02 FEET; THENCE SOUTH 20°50'20" EAST, A DISTANCE OF 187.15 FEET TO THE BEGINNING OF A CURVE CONCAVE TO THE NORTHEAST, HAVING A RADIUS OF 270.00 FEET; THENCE ALONG THE ARC OF SAID CURVE, SUBTENDING A CENTRAL ANGLE OF 83°21'07", A DISTANCE OF 392.79 FEET TO A POINT OF TANGENCY; THENCE ALONG A LINE

TANGENT TO THE LAST DESCRIBED CURVE, NORTH 75°48'33" EAST, A DISTANCE OF 211.22 FEET; THENCE SOUTH 14°11'27" EAST, A DISTANCE OF 79.34 FEET; THENCE SOUTH 24°11'27" EAST, A DISTANCE OF 125.49 FEET; THENCE NORTH 65°48'33" EAST, A DISTANCE OF 50.00 FEET TO A POINT ON A NON-TANGENT CURVE, CONCAVE TO THE SOUTHWEST, HAVING A RADIUS OF 60.00 FEET, FROM WHICH A RADIAL LINE BEARS SOUTH 70°58'37" EAST; THENCE ALONG THE ARC OF SAID NON-TANGENT CURVE, SUBTENDING A CENTRAL ANGLE OF 53°18'38", A DISTANCE OF 55.83 FEET TO A POINT OF TANGENCY; THENCE ALONG A LINE TANGENT TO THE LAST DESCRIBED CURVE, NORTH 72°20'01" EAST, A DISTANCE OF 77.23 FEET; THENCE NORTH 86°31'53" EAST, A DISTANCE OF 210.94 FEET; THENCE NORTH 72°20'01" EAST, A DISTANCE OF 95.66 FEET; THENCE NORTH 89°12'47" EAST, A DISTANCE OF 45.42 FEET; THENCE NORTH 00°47'13" WEST, A DISTANCE OF 54.38 FEET; THENCE NORTH 12°42'31" EAST, A DISTANCE OF 51.42 FEET; THENCE SOUTH 84°02'21" EAST, A DISTANCE OF 70.49 FEET TO A POINT ON THE AFOREMENTIONED WEST RIGHT-OF-WAY LINE OF JOG ROAD; THENCE, ALONG SAID WEST RIGHT-OF-WAY LINE, SOUTH 00°47'13" EAST, A DISTANCE OF 560.00 FEET TO THE POINT OF BEGINNING.

THE ABOVE DESCRIBED PARCEL CONTAINS 91.736 ACRES MORE OR LESS.

HAVE CAUSED THE SAME TO BE SURVEYED AND PLATTED AS SHOWN HEREON AND DO HEREBY DEDICATE AS FOLLOWS:

- TRACT A, AS SHOWN HEREON, IS HEREBY RESERVED FOR THE SMITH DAIRY MASTER MAINTENANCE ASSOCIATION, INC., ITS SUCCESSORS AND ASSIGNS, FOR PRIVATE STREET PURPOSES AND OTHER PURPOSES NOT INCONSISTENT WITH THIS RESERVATION AND IS THE PERPETUAL MAINTENANCE OBLIGATION OF SAID ASSOCIATION, ITS SUCCESSORS AND ASSIGNS, WITHOUT RECOURSE TO PALM BEACH COUNTY.
- TRACT B, AS SHOWN HEREON, IS HEREBY DEDICATED TO THE BOARD OF COUNTY COMMISSIONERS OF PALM BEACH COUNTY, FLORIDA, FOR THE PERPETUAL USE OF THE PUBLIC FOR PUBLIC STREET PURPOSES.
- TRACTS C, E, F, G, H, I, J, K AND L, AS SHOWN HEREON, ARE HEREBY RESERVED FOR SMITH DAIRY MASTER MAINTENANCE ASSOCIATION, INC., ITS SUCCESSORS AND ASSIGNS, FOR OPEN SPACE PURPOSES, AND ARE THE PERPETUAL MAINTENANCE OBLIGATION OF SAID ASSOCIATION, ITS SUCCESSORS AND ASSIGNS, WITHOUT RECOURSE TO PALM BEACH COUNTY.
- TRACT D, THE BUFFER TRACT, AS SHOWN HEREON, IS HEREBY RESERVED FOR THE SMITH DAIRY MASTER MAINTENANCE ASSOCIATION, INC., ITS SUCCESSORS AND ASSIGNS, FOR BUFFER AND OTHER PURPOSES AND IS THE PERPETUAL MAINTENANCE OBLIGATION OF SAID ASSOCIATION, ITS SUCCESSORS AND ASSIGNS, WITHOUT RECOURSE TO PALM BEACH COUNTY.
- TRACTS LK-1, LK-2, LK-3 AND LK-5, THE WATER MANAGEMENT TRACTS, AS SHOWN HEREON, ARE HEREBY RESERVED FOR THE SMITH DAIRY MASTER MAINTENANCE ASSOCIATION, INC., ITS SUCCESSORS AND ASSIGNS, FOR STORMWATER MANAGEMENT AND DRAINAGE PURPOSES AND ARE THE PERPETUAL MAINTENANCE OBLIGATION OF SAID ASSOCIATION, ITS SUCCESSORS AND ASSIGNS, WITHOUT RECOURSE TO PALM BEACH COUNTY, SUBJECT TO EXISTING LITTORAL ZONE RESTRICTIVE COVENANT AGREEMENT RECORDED IN OFFICIAL RECORD BOOK 10261, PAGE 1284 OF THE PUBLIC RECORDS OF PALM BEACH COUNTY, FLORIDA.
- PALM BEACH COUNTY SHALL HAVE THE RIGHT, BUT NOT THE OBLIGATION, TO MAINTAIN ANY PORTION OF THE DRAINAGE SYSTEM ENCOMPASSED BY THIS PLAT WHICH IS ASSOCIATED WITH THE DRAINAGE OF PUBLIC STREETS, INCLUDING THE RIGHT TO UTILIZE FOR PROPER PURPOSES ANY AND ALL DRAINAGE, LAKE MAINTENANCE, AND LAKE MAINTENANCE ACCESS EASEMENTS AND PRIVATE ROADS ASSOCIATED WITH SAID DRAINAGE SYSTEM.
- THE UTILITY EASEMENTS, AS SHOWN HEREON, ARE HEREBY DEDICATED IN PERPETUITY FOR THE CONSTRUCTION AND MAINTENANCE OF UTILITY FACILITIES, INCLUDING CABLE TELEVISION SYSTEMS. THE INSTALLATION OF CABLE TELEVISION SYSTEMS SHALL NOT INTERFERE WITH THE CONSTRUCTION AND MAINTENANCE OF OTHER UTILITIES.
- THE LIMITED ACCESS EASEMENTS (LAE), AS SHOWN HEREON, ARE HEREBY DEDICATED TO THE BOARD OF COUNTY COMMISSIONERS OF PALM BEACH COUNTY, FLORIDA, FOR THE PURPOSE OF CONTROL AND JURISDICTION OVER ACCESS RIGHTS.
- THE BUFFER EASEMENTS, AS SHOWN HEREON, ARE HEREBY RESERVED FOR SMITH DAIRY MASTER MAINTENANCE ASSOCIATION, INC., ITS SUCCESSORS AND ASSIGNS, FOR BUFFER AND OTHER PURPOSES AND ARE THE PERPETUAL MAINTENANCE OBLIGATION OF SAID ASSOCIATION, ITS SUCCESSORS AND ASSIGNS, WITHOUT RECOURSE TO PALM BEACH COUNTY.

- THE LAKE MAINTENANCE AND LAKE MAINTENANCE ACCESS EASEMENTS, AS SHOWN HEREON, ARE HEREBY RESERVED FOR THE SMITH DAIRY MASTER MAINTENANCE ASSOCIATION, INC., ITS SUCCESSORS AND ASSIGNS, FOR ACCESS TO STORMWATER MANAGEMENT AND DRAINAGE FACILITIES LOCATED WITHIN THE ASSOCIATED WATER MANAGEMENT TRACTS FOR PURPOSES OF PERFORMING ANY AND ALL MAINTENANCE ACTIVITIES PURSUANT TO THE MAINTENANCE OBLIGATION OF SAID ASSOCIATION, ITS SUCCESSORS AND ASSIGNS, WITHOUT RECOURSE TO PALM BEACH COUNTY.
- THE LIFT STATION EASEMENT, AS SHOWN HEREON, IS HEREBY DEDICATED IN PERPETUITY TO PALM BEACH COUNTY, ITS SUCCESSORS AND ASSIGNS, FOR LIFT STATION AND RELATED PURPOSES.
- THE FILING OF THIS PLAT EXTINGUISHES THAT PORTION OF THE EASEMENT RECORDED IN OFFICIAL RECORD BOOK 6620, PAGE 1347 OF THE PUBLIC RECORDS OF PALM BEACH COUNTY, FLORIDA, WHICH IS LOCATED ON THE PROPERTY SUBJECT TO THIS PLAT.
- THE DRAINAGE EASEMENTS AS SHOWN HEREON ARE HEREBY DEDICATED IN PERPETUITY FOR DRAINAGE PURPOSES. THE MAINTENANCE OF ALL DRAINAGE FACILITIES LOCATED THEREIN SHALL BE THE PERPETUAL MAINTENANCE OBLIGATION OF THE SMITH DAIRY MASTER MAINTENANCE ASSOCIATION, INC., ITS SUCCESSORS AND ASSIGNS, WITHOUT RECOURSE TO PALM BEACH COUNTY.

IN WITNESS WHEREOF, THE ABOVE NAMED CORPORATION HAS CAUSED THESE PRESENTS TO BE SIGNED BY ITS PRESIDENT AND ITS CORPORATE SEAL AFFIXED HERETO BY AND WITH THE AUTHORITY OF ITS BOARD OF DIRECTORS THIS 16th DAY OF FEBRUARY, 1999.

THE WESTBROOKE COMPANIES, INC.,
 A FLORIDA CORPORATION

WITNESS: Harold L. Eisenacher
 HAROLD L. EISENACHER

BY: James Carr
 JAMES CARR
 PRESIDENT

WITNESS: David F. Webber
 DAVID F. WEBBER

ACKNOWLEDGEMENT

STATE OF FLORIDA)
 COUNTY OF PALM BEACH)

BEFORE ME PERSONALLY APPEARED JAMES CARR, WHO IS PERSONALLY KNOWN TO ME, OR HAS PRODUCED AS IDENTIFICATION, AND WHO EXECUTED THE FOREGOING INSTRUMENT, AND ACKNOWLEDGED TO AND BEFORE ME THAT HE EXECUTED SAID INSTRUMENT FOR THE PURPOSES EXPRESSED THEREIN.

WITNESS MY HAND AND OFFICIAL SEAL THIS 16 DAY OF February, 1999.

MY COMMISSION EXPIRES: 8/25/02 DATE

Elizabeth R. Burdette
 ELIZABETH R. BURDETTE
 NOTARY PUBLIC

SEAL NOTARY PUBLIC

OFFICIAL NOTARY SEAL
 ELIZABETH R. BURDETTE
 NOTARY PUBLIC STATE OF FLORIDA
 COMMISSION NO. CC70946
 MY COMMISSION EXP. AUG. 25, 2002

ACCEPTANCE OF RESERVATIONS

STATE OF FLORIDA)
 COUNTY OF PALM BEACH)

THE SMITH DAIRY MASTER MAINTENANCE ASSOCIATION, INC., HEREBY ACCEPTS THE DEDICATIONS OR RESERVATIONS TO SAID ASSOCIATION AS STATED AND SHOWN HEREON, AND HEREBY ACCEPTS ITS MAINTENANCE OBLIGATIONS FOR SAME AS STATED HEREON, DATED THIS 16th DAY OF FEBRUARY, 1999.

SMITH DAIRY MASTER MAINTENANCE ASSOCIATION, INC.
 A FLORIDA CORPORATION NOT FOR PROFIT

WITNESS: Harold L. Eisenacher
 HAROLD L. EISENACHER

BY: James Carr
 JAMES CARR
 PRESIDENT

WITNESS: David F. Webber
 DAVID F. WEBBER

ACKNOWLEDGEMENT

STATE OF FLORIDA)
 COUNTY OF PALM BEACH)

BEFORE ME PERSONALLY APPEARED JAMES CARR WHO IS PERSONALLY KNOWN TO ME, OR HAS PRODUCED AS IDENTIFICATION, AND WHO EXECUTED THE FOREGOING INSTRUMENT AS PRESIDENT OF SMITH DAIRY MASTER MAINTENANCE ASSOCIATION, INC., A FLORIDA CORPORATION, NOT FOR PROFIT, AND SEVERALLY ACKNOWLEDGED TO AND BEFORE ME THAT HE EXECUTED SUCH INSTRUMENT AS SUCH OFFICER OF SAID CORPORATION, AND THAT THE SEAL AFFIXED TO THE FOREGOING INSTRUMENT IS THE CORPORATE SEAL OF SAID CORPORATION AND THAT IT WAS AFFIXED TO SAID INSTRUMENT BY DUE AND REGULAR CORPORATE AUTHORITY, AND THAT SAID INSTRUMENT IS THE FREE ACT AND DEED OF SAID CORPORATION.

WITNESS MY HAND AND OFFICIAL SEAL THIS 16 DAY OF February, 1999.

MY COMMISSION EXPIRES: 8/25/02 DATE

Elizabeth R. Burdette
 ELIZABETH R. BURDETTE
 NOTARY PUBLIC

SEAL NOTARY PUBLIC

OFFICIAL NOTARY SEAL
 ELIZABETH R. BURDETTE
 NOTARY PUBLIC STATE OF FLORIDA
 COMMISSION NO. CC70946
 MY COMMISSION EXP. AUG. 25, 2002

APPROVALS

COUNTY ENGINEER:

THIS PLAT IS HEREBY APPROVED FOR RECORD PURSUANT TO PALM BEACH COUNTY ORDINANCE 95-33, AND IN ACCORDANCE WITH SECTION 177.071(2), F.S., THIS 9 DAY OF June, 1999, AND HAS BEEN REVIEWED BY A PROFESSIONAL SURVEYOR AND MAPPER EMPLOYED BY PALM BEACH COUNTY IN ACCORDANCE WITH SECTION 177.081(1), F.S.

BY: George T. Webb
 GEORGE T. WEBB, P.E., COUNTY ENGINEER

P.U.D. TABULAR DATA

SMITH DAIRY EAST P.U.D. PHASE ONE (PARCEL C) PETITION NO. 95-87 PDD

TOTAL AREA	91.736 ACRES
ROADS	13.937 ACRES
OPEN SPACE	7.240 ACRES
WATER MANAGEMENT TRACTS	29.375 ACRES
DENSITY	1.86 ACRES
NUMBER OF UNITS	171

THIS INSTRUMENT WAS PREPARED BY DAVID L. SMITH, P.S.M. IN THE OFFICES OF MOCK, ROOS & ASSOCIATES, INC., 5720 CORPORATE WAY, WEST PALM BEACH, FLORIDA 33407.

SCALE: N/A	 5720 Corporate Way, West Palm Beach, Florida 33407 (561) 683-3173, fax 478-7248
P.A. NO.: 98082.32	
DATE: NOVEMBER 1998	
DRAWING NO.: 45-42-03-63	
SHEET 1 OF 10	

JOURNEY'S END PLAT ONE
 PART OF SMITH DAIRY EAST P.U.D. BEING A PORTION OF SECTION 3, TOWNSHIP 45 SOUTH, RANGE 42 EAST, TOGETHER WITH A REPLAT OF A PORTION OF BLOCKS 38 & 39, PALM BEACH FARMS COMPANY, PLAT NO. 3, PLAT BOOK 2, PAGES 45 THROUGH 54 SECTIONS 3 & 4, TOWNSHIP 45 SOUTH, RANGE 42 EAST PALM BEACH COUNTY, FLORIDA

SUBDIVISION: Journey's End
 PAGE: 33
 FLOOD MAP # 1704
 ZONING: PUD/JE
 QUAD # 34+44
 SE 20-106I
 TAZ 915
 PUD NAME: Smith Dairy East
 REV: 1-18-99
 CAD FILE: WESTSM_C/SW_CRP01