

ABACOA TOWN CENTER PLAT NO. 1

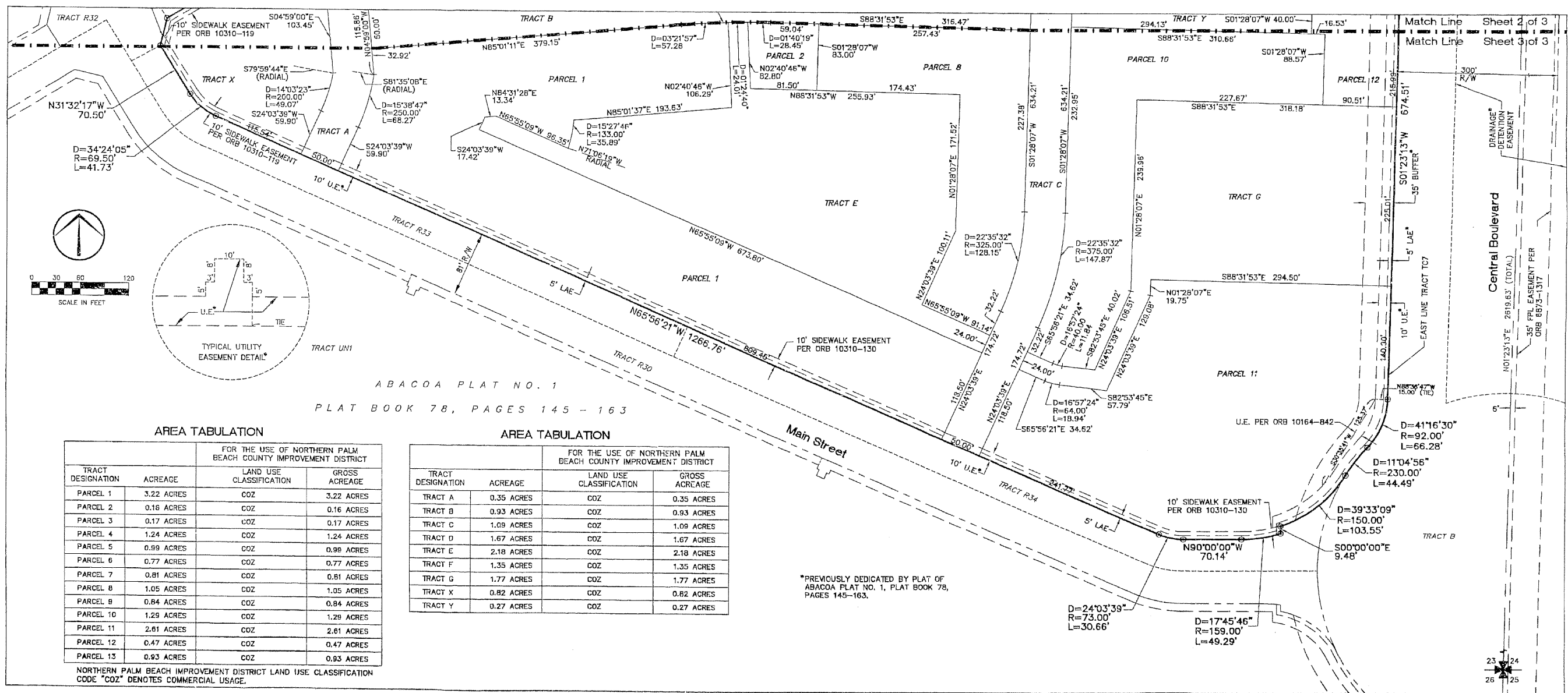
A Replat of Tracts TC7 and TC8 of Abacoa Plat No. 1, as recorded in Plat Book 78, Pages 145 through 163, inclusive of the Public Records of Palm Beach County, Florida, lying in Section 23, Township 41 South, Range 42 East Town of Jupiter, Palm Beach County, Florida

April, 1999

This Instrument prepared by James E. Park, P.M.S.
Williams, Hatfield & Stoner, Inc. - Engineers Surveyors Planners Environmental Scientists
1901 South Congress Avenue, Suite 150, Boynton Beach, Florida 33426

Sheet 3 of 3

27



ABACOA PLAT NO. 1
PLAT BOOK 78, PAGES 145 - 163

AREA TABULATION

TRACT DESIGNATION	ACREAGE	LAND USE CLASSIFICATION	GROSS ACREAGE
PARCEL 1	3.22 ACRES	COZ	3.22 ACRES
PARCEL 2	0.16 ACRES	COZ	0.16 ACRES
PARCEL 3	0.17 ACRES	COZ	0.17 ACRES
PARCEL 4	1.24 ACRES	COZ	1.24 ACRES
PARCEL 5	0.99 ACRES	COZ	0.99 ACRES
PARCEL 6	0.77 ACRES	COZ	0.77 ACRES
PARCEL 7	0.81 ACRES	COZ	0.81 ACRES
PARCEL 8	1.05 ACRES	COZ	1.05 ACRES
PARCEL 9	0.84 ACRES	COZ	0.84 ACRES
PARCEL 10	1.29 ACRES	COZ	1.29 ACRES
PARCEL 11	2.81 ACRES	COZ	2.81 ACRES
PARCEL 12	0.47 ACRES	COZ	0.47 ACRES
PARCEL 13	0.93 ACRES	COZ	0.93 ACRES

AREA TABULATION

TRACT DESIGNATION	ACREAGE	LAND USE CLASSIFICATION	GROSS ACREAGE
TRACT A	0.35 ACRES	COZ	0.35 ACRES
TRACT B	0.93 ACRES	COZ	0.93 ACRES
TRACT C	1.09 ACRES	COZ	1.09 ACRES
TRACT D	1.67 ACRES	COZ	1.67 ACRES
TRACT E	2.18 ACRES	COZ	2.18 ACRES
TRACT F	1.35 ACRES	COZ	1.35 ACRES
TRACT G	1.77 ACRES	COZ	1.77 ACRES
TRACT X	0.82 ACRES	COZ	0.82 ACRES
TRACT Y	0.27 ACRES	COZ	0.27 ACRES

NORTHERN PALM BEACH IMPROVEMENT DISTRICT LAND USE CLASSIFICATION CODE "COZ" DENOTES COMMERCIAL USAGE.

*PREVIOUSLY DEDICATED BY PLAT OF ABACOA PLAT NO. 1, PLAT BOOK 78, PAGES 145-163.