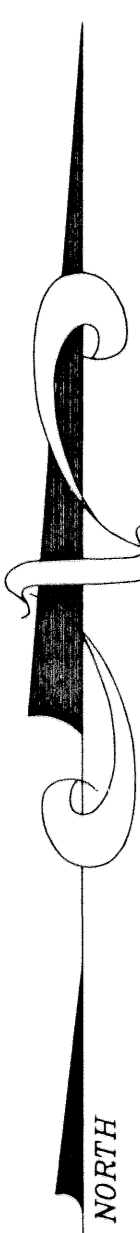
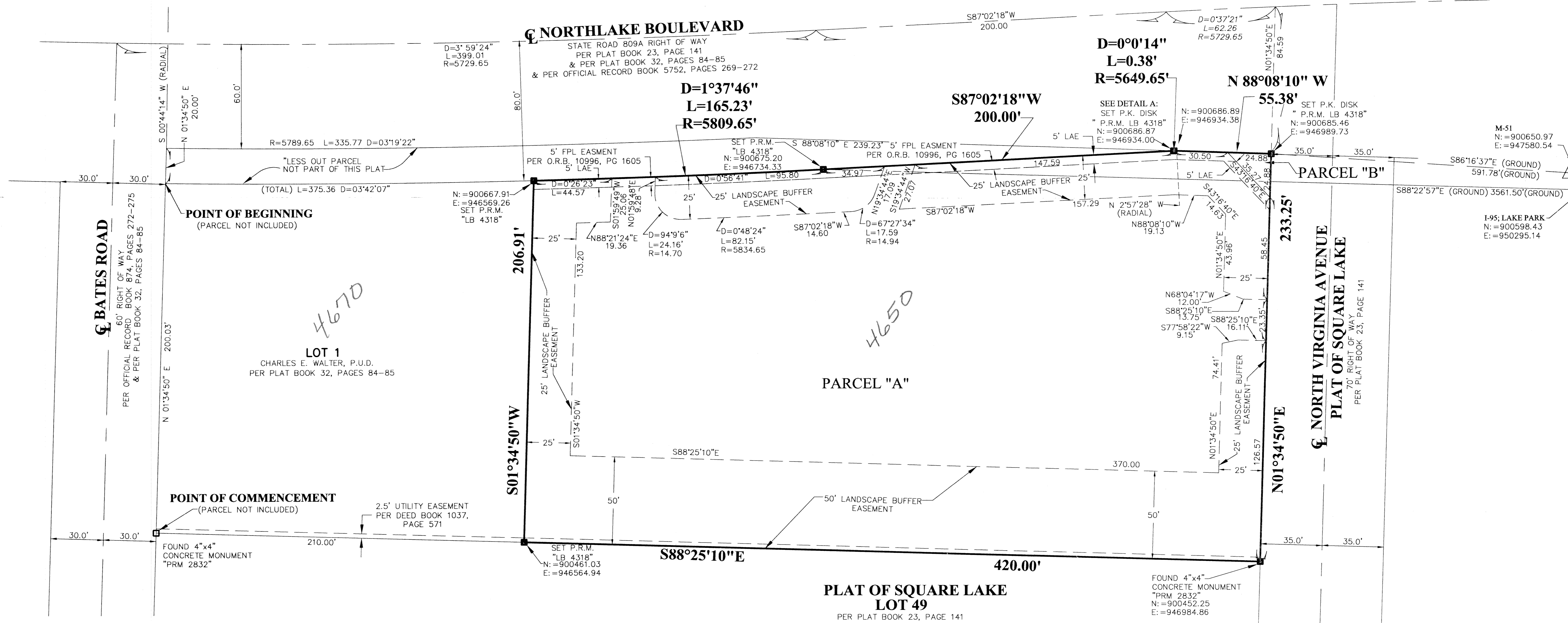
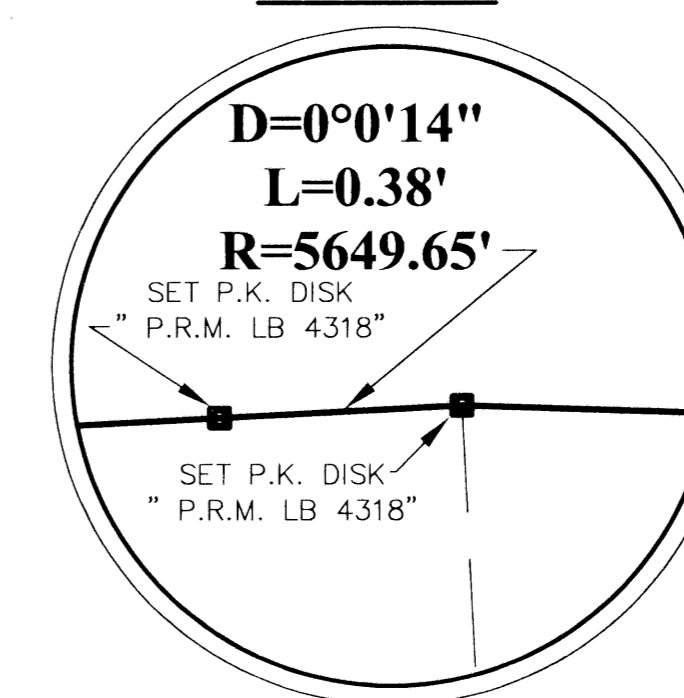


CHARLES E. WALTER, P.U.D., REPLAT No.1  
BEING A REPLAT OF ALL OF LOTS 2 AND 3, CHARLES E. WALTER  
, P.U.D., AS RECORDED IN PLAT BOOK 32, PAGES 84  
THROUGH 85, OF THE PUBLIC RECORDS OF PALM BEACH COUNTY,  
FLORIDA, LYING IN SECTION 24, TOWNSHIP 42 SOUTH, RANGE 42  
EAST, PALM BEACH COUNTY, FLORIDA.

SHEET 2 OF 2  
DECEMBER 1998

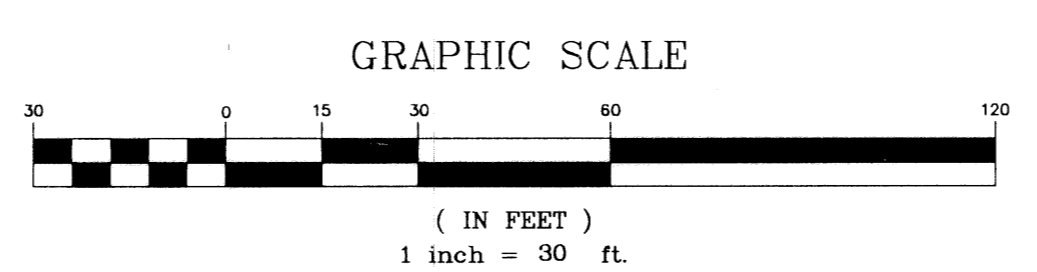
DETAIL A



LOT 1  
CHARLES E. WALTER, P.U.D.  
PER PLAT BOOK 32, PAGES 84-85

PLAT OF SQUARE LAKE  
LOT 49  
PER PLAT BOOK 23, PAGE 141

- LEGEND**
- C = CENTERLINE
  - D = DELTA (CENTRAL ANGLE)
  - R = RADIUS
  - L = ARC LENGTH
  - LB = LICENSED BUSINESS
  - LS = LICENSED SURVEYOR
  - PRM = PERMANENT REFERENCE MONUMENT
  - P.K. = PARKER & KALON NAIL
  - N = NORTHING (GRID)
  - E = EASTING (GRID)
  - LAE = LIMITED ACCESS EASEMENT
  - = PRM "LB 4318"
  - O.R.B. = OFFICIAL RECORDS BOOK
  - PG. = PAGE
  - FPL = FLORIDA POWER AND LIGHT



Subdivision Charles E. Walter, P.U.D.  
Book BS  
Page 1  
Flood Zone B  
Quadrant 28  
SHER. CO. B. 2  
TAX. 109  
P.U.D. NAME Charles E. Walter

**CHARLES E. WALTER, P.U.D., REPLAT No.1**

**NICK MILLER, INC.**  
Surveying & Mapping Consultants

SUITE 105  
2560 RCA BLVD.  
PALM BEACH GARDENS, FLORIDA 33410  
TEL 561 627-5200 FAX 561 627-0983  
D.B.P.R. LICENSED BUSINESS No. 4318

SHEET NO. **2 OF 2**

SCALE: 1"=30'  
DATE: DEC 1998  
JOB NO. 98018A  
FILE: 98018A